

# Anti-Alpha Skeletal Muscle Actin Recombinant Rabbit Monoclonal Antibody



**Catalog #: 1571**

## Aliases

Actin Alpha 1, Skeletal Muscle; NEM3; ACTA; Actin, Alpha Skeletal Muscle; Nemaline Myopathy Type 3; Alpha-Actin-1; EC 3.6.4.-; CMYP2A; CMYP2B; CMYP2C; CFTD1; CFTDM; ASMA; CFTD; MPFD; NEM1; NEM2; SHPM

## Background

Gene Name: ACTA1  
NCBI Gene Entry: [58](#)  
UniProt Entry: [P68133](#)

## Application Information

Molecular Weight: Predicted, 42 kDa; observed, 42 kDa  
Clonality: Rabbit monoclonal antibody  
Clone ID: 23GB1355  
Species Reactivity: Mouse, rat  
Applications Tested: Western blotting (WB), flow cytometry (FCM), immunocytochemistry (IC)

## Immunogen

A synthesized peptide derived from human Actin (Alpha-Actin)

## Isotype

Rabbit IgG

## Storage Buffer

Supplied in PBS (pH 7.4) containing 50% glycerol, and 0.02% sodium azide.

## Storage

Store at -20 °C for one year.

## Recommended Dilutions

Western Blotting (WB): 1:1,000-1:5,000  
Flow Cytometry (FCM): 1:2,000  
Immunocytochemistry (IC): 1:100-1:1,000

**Note:** This product is for research use only.

---

### SUPPORT

SUPPORT@GENUINBIOTECH.COM  
TEL: +1-540-855-7041

### ORDERS

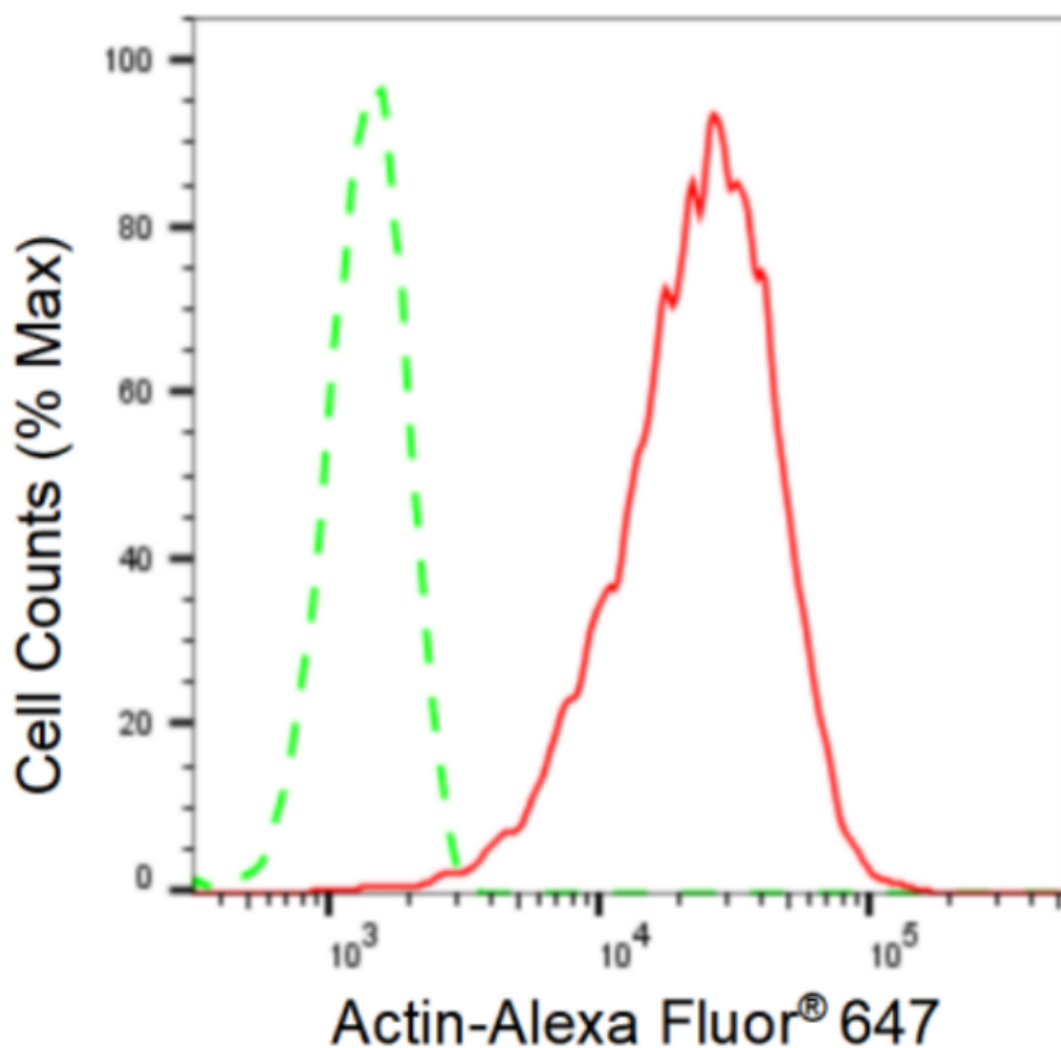
SALES@GENUINBIOTECH.COM  
FAX: +1-540-855-7041

[WWW.GENUINBIOTECH.COM](http://WWW.GENUINBIOTECH.COM)

# Anti-Alpha Skeletal Muscle Actin Recombinant Rabbit Monoclonal Antibody

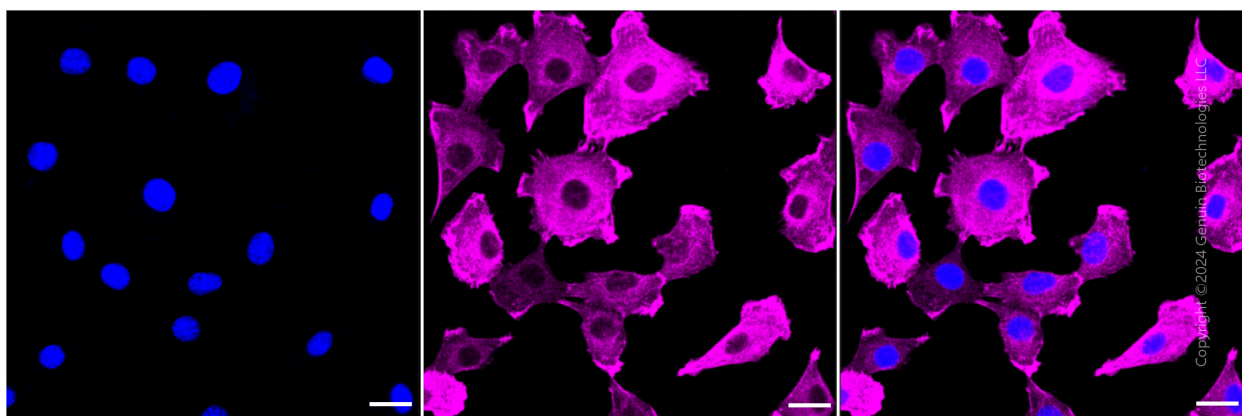
PAGE 2

## Validation Data



Copyright ©2024 Genuin Biotechnologies LLC

Flow cytometric analysis of Actin expression in C2C12 cells using Actin antibody (Cat#1571, 1:2,000). Green, isotype control; red, Actin.



Copyright ©2024 Genuin Biotechnologies LLC

### SUPPORT

SUPPORT@GENUINBIOTECH.COM  
TEL: +1-540-855-7041

### ORDERS

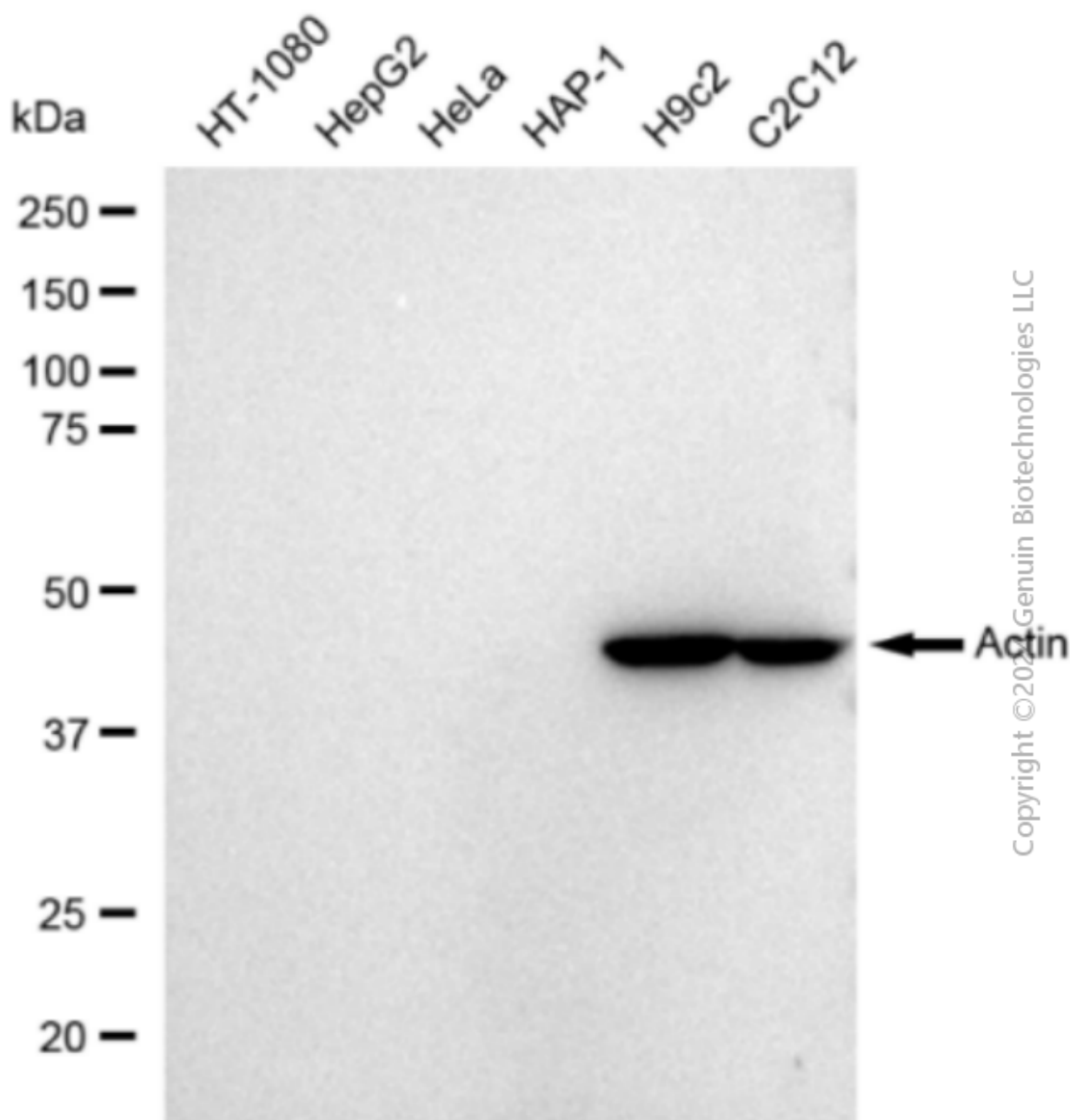
SALES@GENUINBIOTECH.COM  
FAX: +1-540-855-7041

WWW.GENUINBIOTECH.COM

## Anti-Alpha Skeletal Muscle Actin Recombinant Rabbit Monoclonal Antibody

PAGE 3

Immunocytochemical staining of C2C12 cells with Actin antibody (Cat#1571, 1:1,000). Nuclei were stained blue with DAPI; Actin was stained magenta with Alexa Fluor® 647. Images were taken using Leica stellaris 5. Protein abundance based on laser Intensity and smart gain: High. Scale bar: 20  $\mu$ m.



Western blotting analysis using anti-Actin antibody (Cat#1571). Total cell lysates (30  $\mu$ g) from various cell lines were loaded and separated by SDS-PAGE. The blot was incubated with anti-Actin antibody (Cat#1571, 1:5,000) and HRP-conjugated goat anti-rabbit secondary antibody (Cat#201, 1:20,000) respectively. Image was developed using FeQ™ ECL Substrate Kit

### SUPPORT

SUPPORT@GENUINBIOTECH.COM  
TEL: +1-540-855-7041

### ORDERS

SALES@GENUINBIOTECH.COM  
FAX: +1-540-855-7041

WWW.GENUINBIOTECH.COM

# **Anti-Alpha Skeletal Muscle Actin Recombinant Rabbit Monoclonal Antibody**

PAGE 4

(Cat#226).

---

## **SUPPORT**

SUPPORT@GENUINBIOTECH.COM  
TEL: +1-540-855-7041

## **ORDERS**

SALES@GENUINBIOTECH.COM  
FAX:+1-540-855-7041

**[WWW.GENUINBIOTECH.COM](http://WWW.GENUINBIOTECH.COM)**