

# Anti-Activating transcription factor 5 Recombinant Rabbit Monoclonal Antibody



**Catalog #: 1572**

## Aliases

ATF5; Activating Transcription Factor 5; Cyclic AMP-Dependent Transcription Factor ATF-5; CAMP-Dependent Transcription Factor ATF-5; Transcription Factor ATFx; ATFX; HMFN0395

## Background

Gene Name: ATF5

NCBI Gene Entry: [22809](#)

UniProt Entry: [Q9Y2D1](#)

## Application Information

Molecular Weight: Predicted, 31 kDa; observed, 31 kDa

Clonality: Rabbit monoclonal antibody

Clone ID: 23GB3145

Species Reactivity: Human, mouse, rat

Applications Tested: Western blotting (WB), flow cytometry (FCM), immunocytochemistry (IC)

## Immunogen

A synthesized peptide derived from human ATF5

## Isotype

Rabbit IgG

## Storage Buffer

Supplied in PBS (pH 7.4) containing 50% glycerol, and 0.02% sodium azide.

## Storage

Store at -20 °C for one year.

## Recommended Dilutions

Western Blotting (WB): 1:1,000-1:5,000

Flow Cytometry (FCM): 1:2,000

Immunocytochemistry (IC): 1:100-1:1,000

**Note:** This product is for research use only.

## Validation Data

---

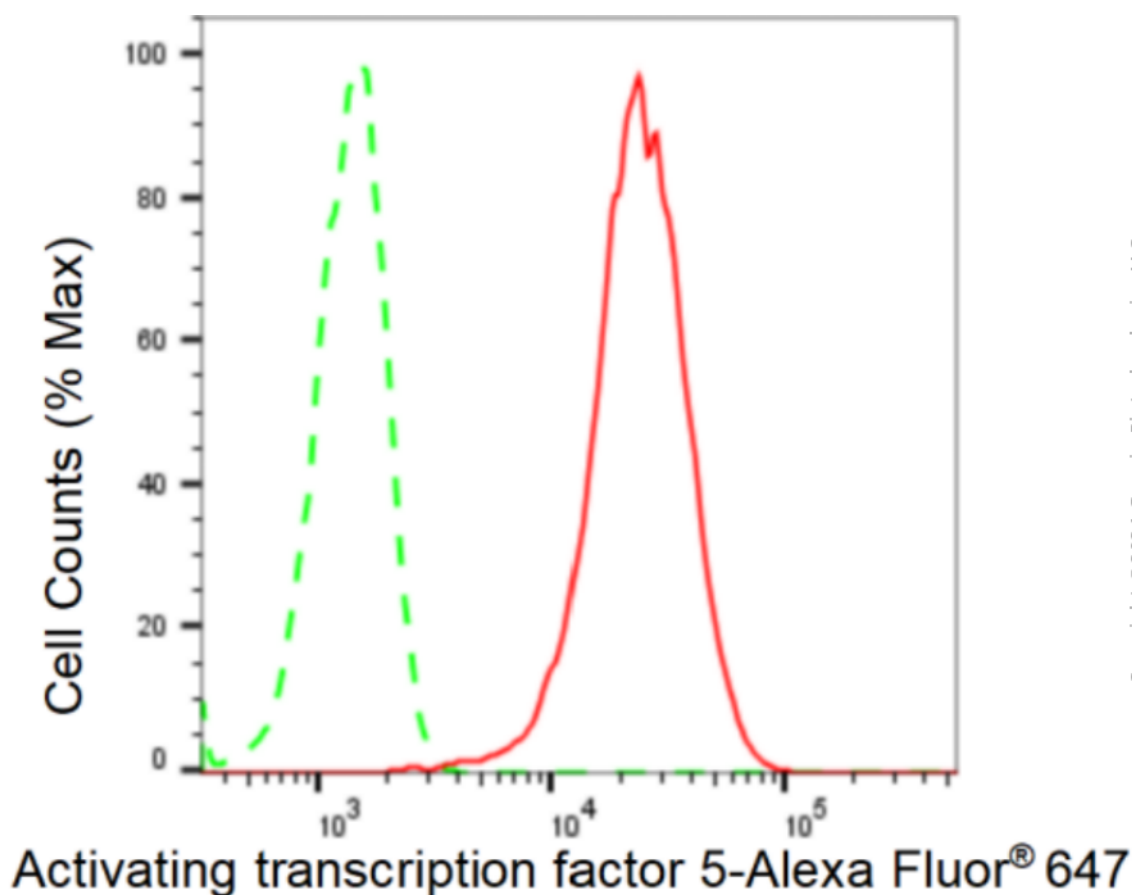
### SUPPORT

SUPPORT@GENUINBIOTECH.COM  
TEL: +1-540-855-7041

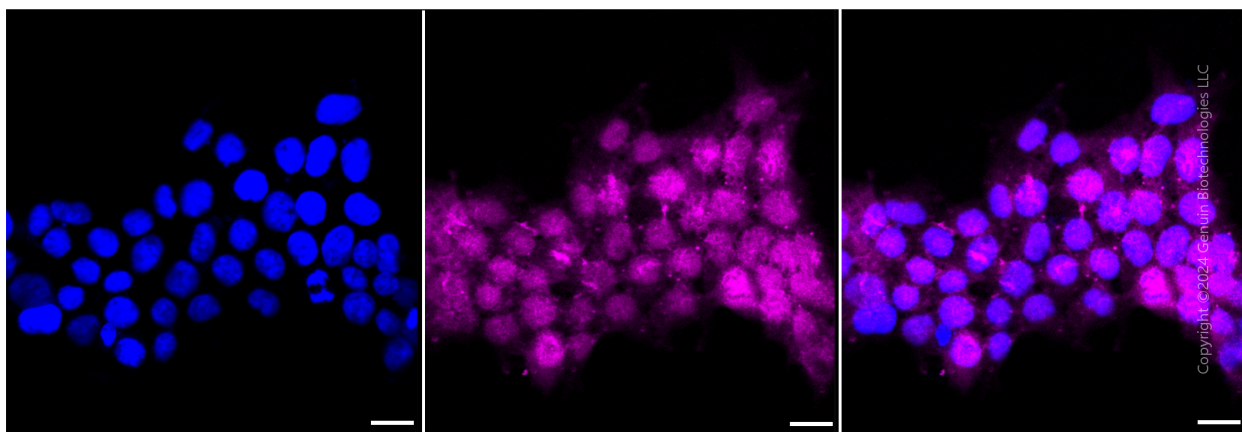
### ORDERS

SALES@GENUINBIOTECH.COM  
FAX: +1-540-855-7041

[WWW.GENUINBIOTECH.COM](http://WWW.GENUINBIOTECH.COM)



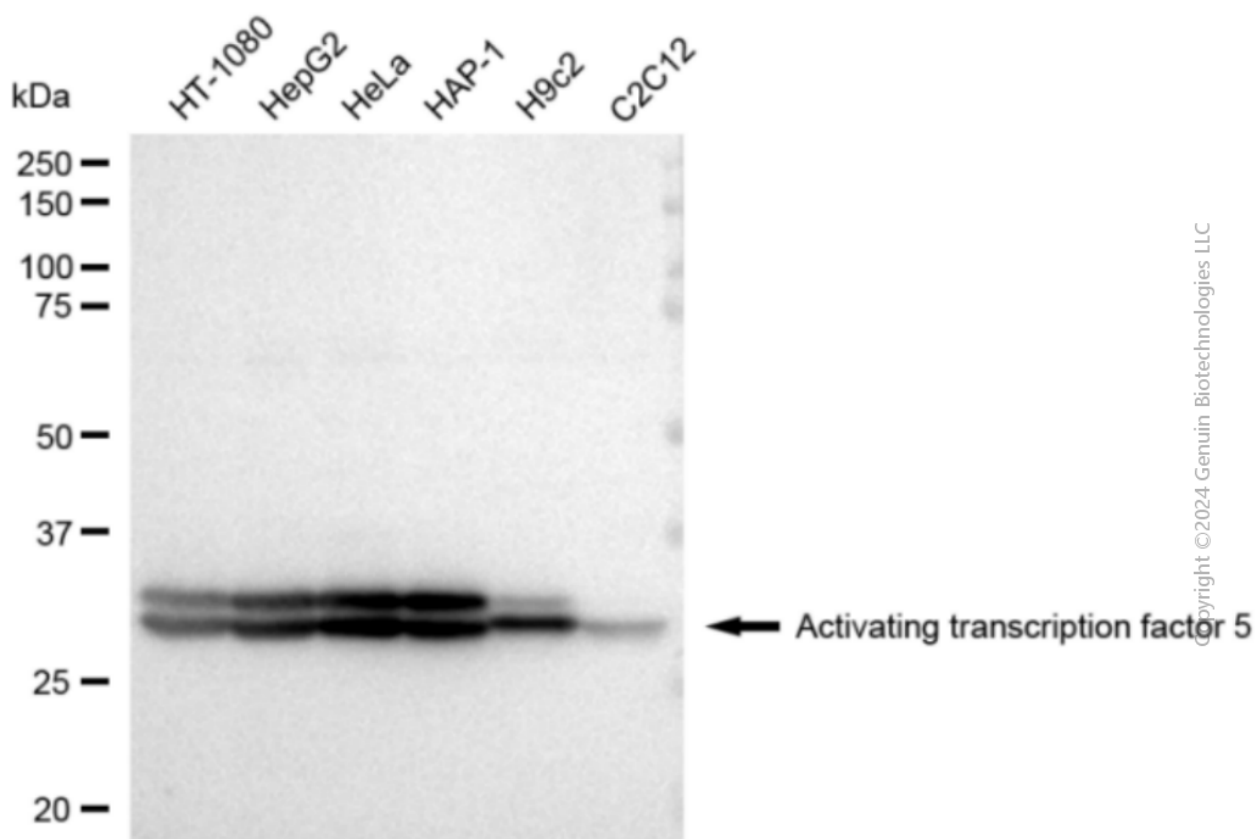
Flow cytometric analysis of Activating transcription factor 5 expression in HeLa cells using Activating transcription factor 5 antibody (Cat#1572, 1:2,000). Green, isotype control; red, Activating transcription factor 5.



Immunocytochemical staining of HeLa cells with Activating transcription factor 5 antibody (Cat#1572, 1:1000). Nuclei were stained blue with DAPI; Activating transcription factor 5 was stained magenta with Alexa Fluor® 647. Images were taken using Leica stellaris 5. Protein abundance based on laser Intensity and smart gain: Medium. Scale bar: 20  $\mu$ m.

## Anti-Activating transcription factor 5 Recombinant Rabbit Monoclonal Antibody

PAGE 3



Western blotting analysis using anti-Activating transcription factor 5 antibody (Cat#1572). Total cell lysates (30  $\mu$ g) from various cell lines were loaded and separated by SDS-PAGE. The blot was incubated with anti-Activating transcription factor 5 antibody (Cat#1572, 1:5,000) and HRP-conjugated goat anti-rabbit secondary antibody (Cat#201, 1:20,000) respectively. Image was developed using FeQ™ ECL Substrate Kit (Cat#226).

### SUPPORT

SUPPORT@GENUINBIOTECH.COM  
TEL: +1-540-855-7041

### ORDERS

SALES@GENUINBIOTECH.COM  
FAX: +1-540-855-7041

[WWW.GENUINBIOTECH.COM](http://WWW.GENUINBIOTECH.COM)