

Anti-AHSA1 Recombinant Rabbit Monoclonal Antibody



Catalog #: 1574

Aliases

AHSA1 □ Activator Of HSP90 ATPase Activity 1; P38; AHA1; Activator Of 90 KDa Heat Shock Protein ATPase Homolog 1; C14orf3; HAha1; AHA1, Activator Of Heat Shock 90kDa Protein ATPase Homolog 1 (Yeast); AHA1, Activator Of Heat Shock 90kDa Protein ATPase Homolog 1; Chromosome 14 Open Reading Frame 3; C14ORF3; HAHA1; Aha1

Background

Gene Name: AHSA1

NCBI Gene Entry: [10598](#)

UniProt Entry: [O95433](#)

Application Information

Molecular Weight: Predicted, 38 kDa; observed, 43 kDa

Clonality: Rabbit monoclonal antibody

Clone ID: 23GB3170

Species Reactivity: Human, mouse, rat

Applications Tested: Western blotting (WB), flow cytometry (FCM), immunocytochemistry (IC)

Immunogen

A synthesized peptide derived from human AHA1

Isotype

Rabbit IgG

Storage Buffer

Supplied in PBS (pH 7.4) containing 50% glycerol, and 0.02% sodium azide.

Storage

Store at -20 °C for one year.

Recommended Dilutions

Western Blotting (WB): 1:1,000-1:5,000

Flow Cytometry (FCM): 1:2,000

Immunocytochemistry (IC): 1:100-1:1,000

SUPPORT

SUPPORT@GENUINBIOTECH.COM
TEL: +1-540-855-7041

ORDERS

SALES@GENUINBIOTECH.COM
FAX: +1-540-855-7041

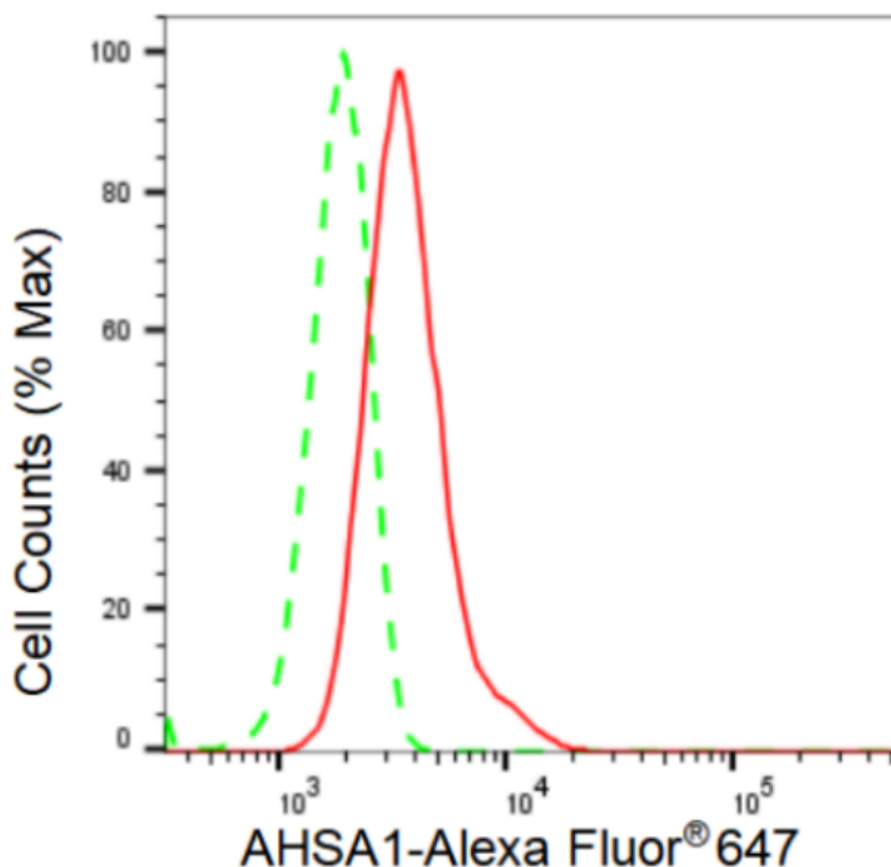
WWW.GENUINBIOTECH.COM

Anti-AHSA1 Recombinant Rabbit Monoclonal Antibody

PAGE 2

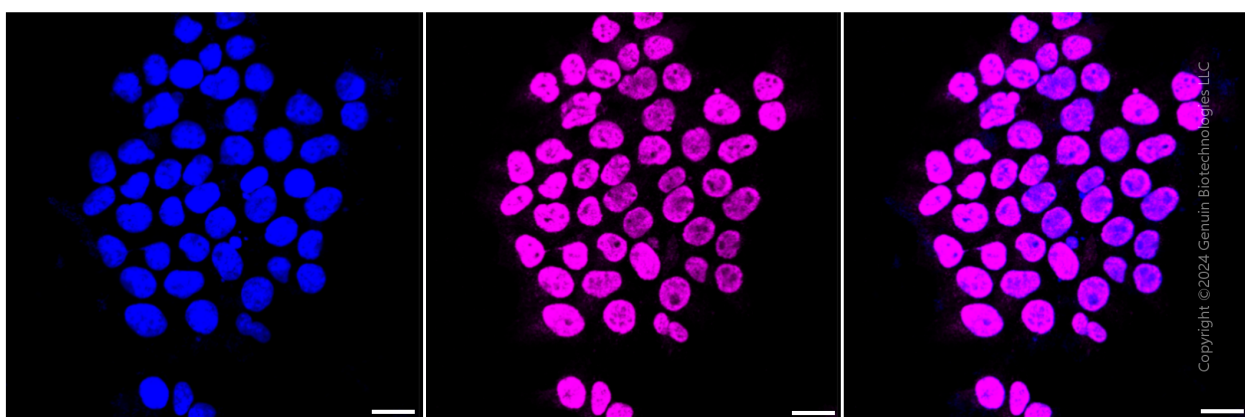
Note: This product is for research use only.

Validation Data



Copyright ©2024 Genuin Biotechnologies LLC

Flow cytometric analysis of AHSA1 expression in HeLa cells using AHSA1 antibody (Cat#1574, 1:2,000). Green, isotype control; red, AHSA1.



Copyright ©2024 Genuin Biotechnologies LLC

Immunocytochemical staining of HeLa cells with AHSA1 antibody (Cat#1574, 1:1,000). Nuclei were stained blue with DAPI; AHSA1 was stained magenta with Alexa Fluor® 647. Images were taken using Leica stellaris 5. Protein abundance based on laser Intensity and smart gain: High.

SUPPORT

SUPPORT@GENUINBIOTECH.COM
TEL: +1-540-855-7041

ORDERS

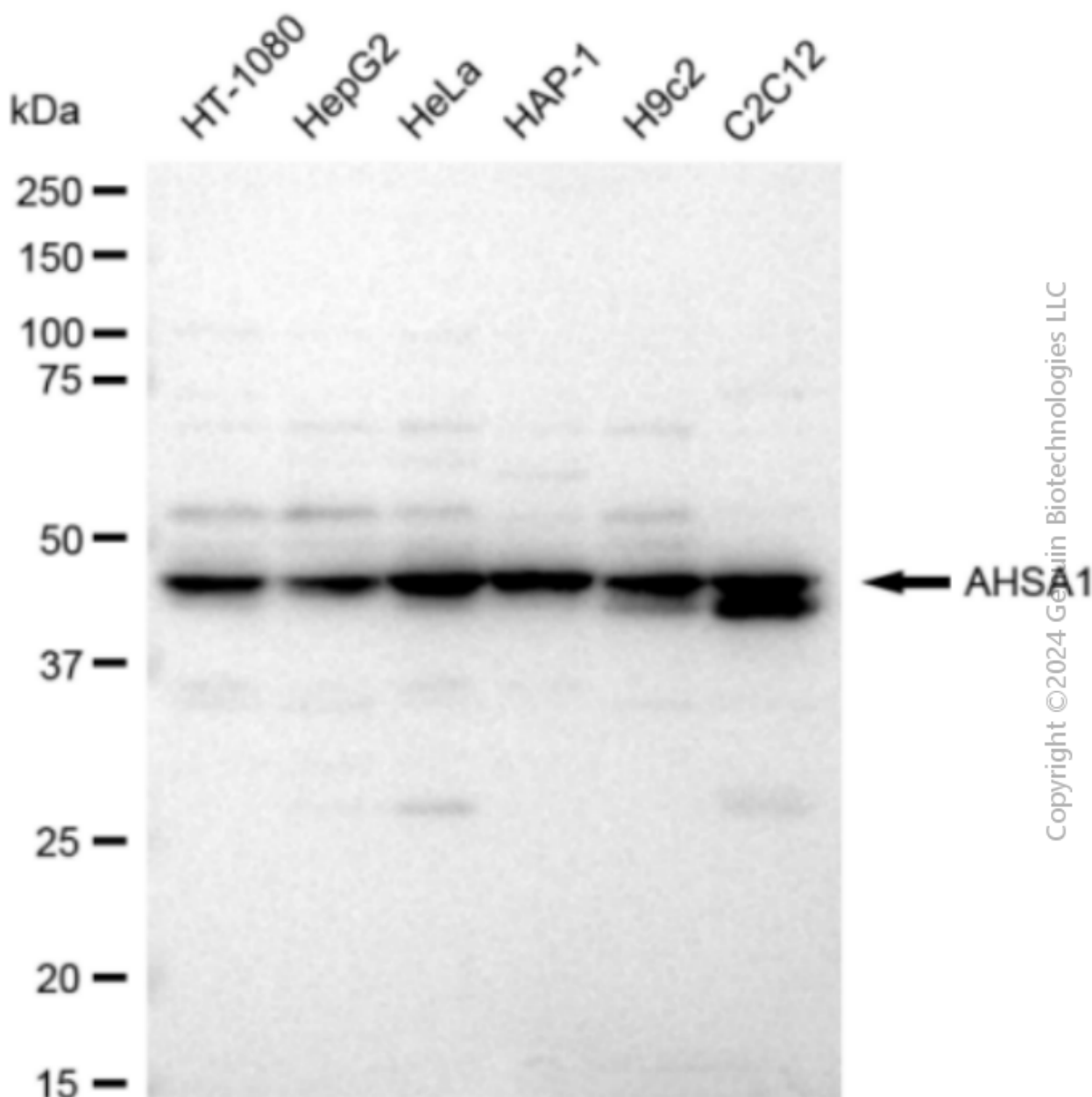
SALES@GENUINBIOTECH.COM
FAX: +1-540-855-7041

WWW.GENUINBIOTECH.COM

Anti-AHSA1 Recombinant Rabbit Monoclonal Antibody

PAGE 3

Scale bar: 20 μ m.



Western blotting analysis using anti-AHSA1 antibody (Cat#1574). Total cell lysates (30 μ g) from various cell lines were loaded and separated by SDS-PAGE. The blot was incubated with anti-AHSA1 antibody (Cat#1574, 1:5,000) and HRP-conjugated goat anti-rabbit secondary antibody (Cat#201, 1:20,000) respectively. Image was developed using FeQ™ ECL Substrate Kit (Cat#226).

SUPPORT

SUPPORT@GENUINBIOTECH.COM
TEL: +1-540-855-7041

ORDERS

SALES@GENUINBIOTECH.COM
FAX: +1-540-855-7041

WWW.GENUINBIOTECH.COM