

Anti-CAD Recombinant Rabbit Monoclonal Antibody



Catalog #: 1588

Aliases

CAD; Carbamoyl-Phosphate Synthetase 2, Aspartate Transcarbamylase, And Dihydroorotase; GATD4; CAD Protein; Multifunctional Protein CAD; CAD Trifunctional Protein; EC 6.3.5.5; EC 2.1.3.2; EC 3.5.2.3; EC 6.3.5; EIEE50; CDG1Z; DEE50

Background

Gene Name: CAD

NCBI Gene Entry: [790](#)

UniProt Entry: [P27708](#)

Application Information

Molecular Weight: Predicted, 243 kDa; observed, 250 kDa

Clonality: Rabbit monoclonal antibody

Clone ID: 23GB3075

Species Reactivity: Human

Applications Tested: Western blotting (WB), flow cytometry (FCM), immunocytochemistry (IC)

Immunogen

A synthesized peptide derived from human CAD

Isotype

Rabbit IgG

Storage Buffer

Supplied in PBS (pH 7.4) containing 50% glycerol, and 0.02% sodium azide.

Storage

Store at -20 °C for one year.

Recommended Dilutions

Western Blotting (WB): 1:1,000-1:5,000

Flow Cytometry (FCM): 1:2,000

Immunocytochemistry (IC): 1:100-1:1,000

Note: This product is for research use only.

SUPPORT

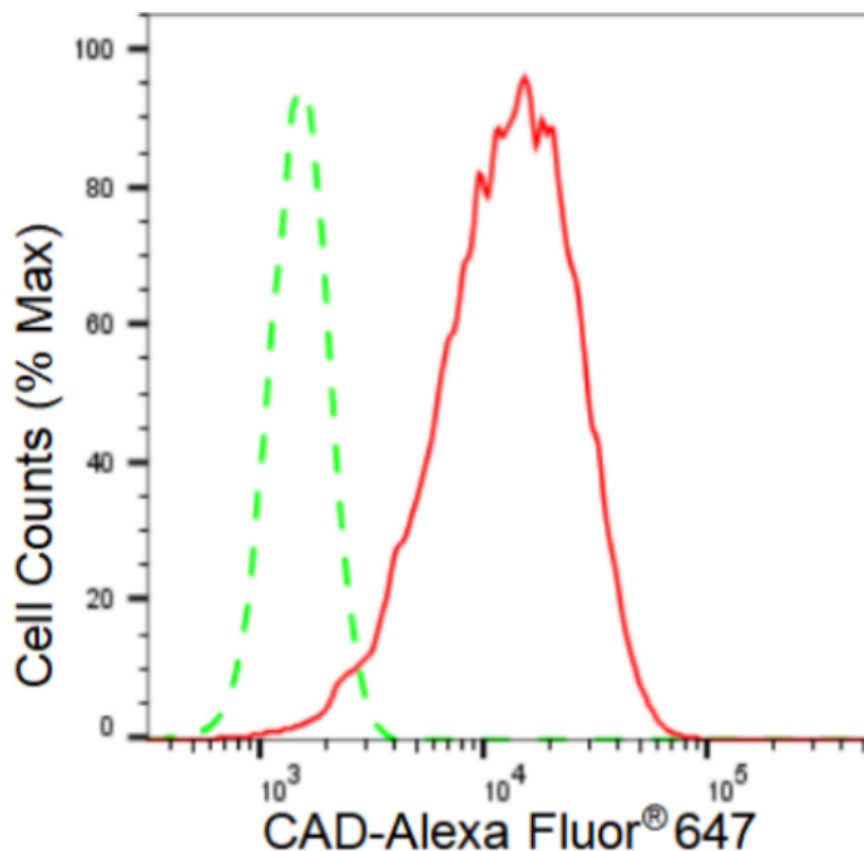
SUPPORT@GENUINBIOTECH.COM
TEL: +1-540-855-7041

ORDERS

SALES@GENUINBIOTECH.COM
FAX: +1-540-855-7041

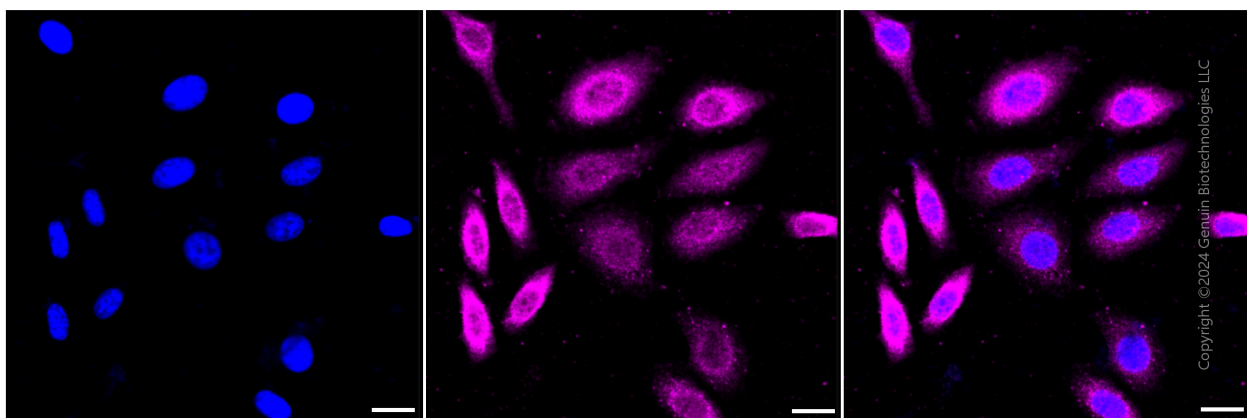
WWW.GENUINBIOTECH.COM

Validation Data



Copyright ©2024 Genuin Biotechnologies LLC

Flow cytometric analysis of CAD expression in HepG2 cells using CAD antibody (Cat#1588, 1:2,000). Green, isotype control; red, CAD.



Copyright ©2024 Genuin Biotechnologies LLC

Immunocytochemical staining of HepG2 cells with CAD antibody (Cat#1588, 1:1,000). Nuclei were stained blue with DAPI; CAD was stained magenta with Alexa Fluor® 647. Images were taken using Leica stellaris 5. Protein abundance based on laser Intensity and smart gain: Medium. Scale bar: 20 μm.

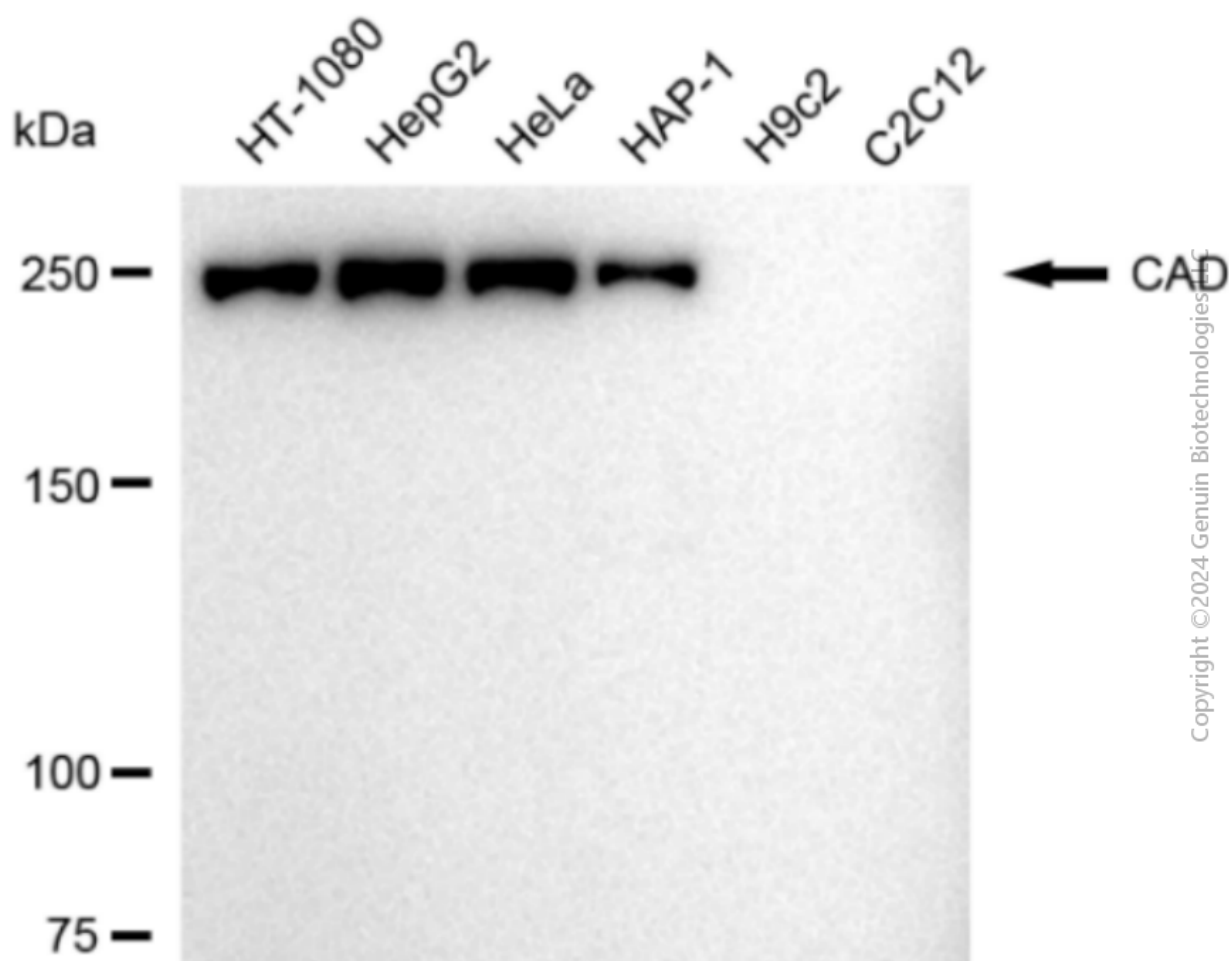
SUPPORT

SUPPORT@GENUINBIOTECH.COM
TEL: +1-540-855-7041

ORDERS

SALES@GENUINBIOTECH.COM
FAX: +1-540-855-7041

WWW.GENUINBIOTECH.COM



Western blotting analysis using anti-CAD antibody (Cat#1588). Total cell lysates (30 μ g) from various cell lines were loaded and separated by SDS-PAGE. The blot was incubated with anti-CAD antibody (Cat#1588, 1:5,000) and HRP-conjugated goat anti-rabbit secondary antibody (Cat#201, 1:20,000) respectively. Image was developed using FeQ™ ECL Substrate Kit (Cat#226).