

Anti-Caspase 5 Recombinant Rabbit Monoclonal Antibody



Catalog #: 1590

Aliases

CASP5; Caspase 5; Caspase 5, Apoptosis-Related Cysteine Peptidase; Caspase 5, Apoptosis-Related Cysteine Protease; Protease ICH-3; ICE(Rel)III; Protease TY; Caspase-5; ICE(Rel)-III; EC 3.4.22.58; TY Protease; ICE(REL)III; ICEREL-III; EC 3.4.22; CASP-5; ICH-3; ICH3

Background

Gene Name: CASP5

NCBI Gene Entry: [838](#)

UniProt Entry: [P51878](#)

Application Information

Molecular Weight: Predicted, 50 kDa; observed, 47 kDa

Clonality: Rabbit monoclonal antibody

Clone ID: 23GB3315

Species Reactivity: Human, mouse, rat

Applications Tested: Western blotting (WB), flow cytometry (FCM), immunocytochemistry (IC)

Immunogen

A synthesized peptide derived from human Caspase 5

Isotype

Rabbit IgG

Storage Buffer

Supplied in PBS (pH 7.4) containing 50% glycerol, and 0.02% sodium azide.

Storage

Store at -20 °C for one year.

Recommended Dilutions

Western Blotting (WB): 1:1,000-1:5,000

Flow Cytometry (FCM): 1:2,000

Immunocytochemistry (IC): 1:100-1:1,000

Note: This product is for research use only.

SUPPORT

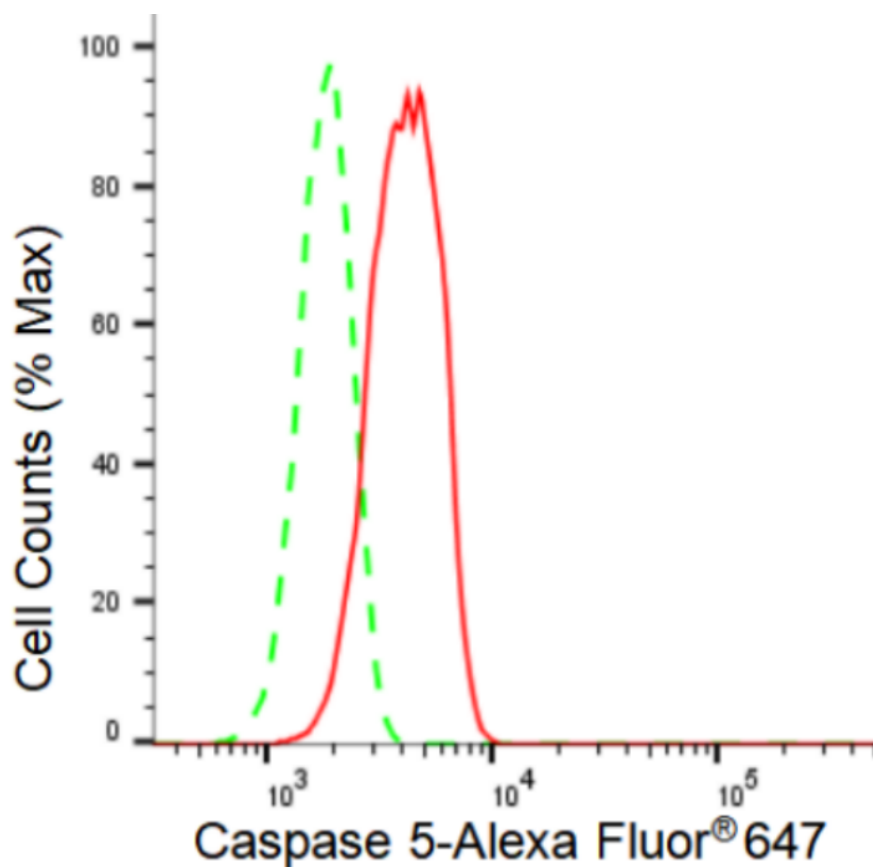
SUPPORT@GENUINBIOTECH.COM
TEL: +1-540-855-7041

ORDERS

SALES@GENUINBIOTECH.COM
FAX: +1-540-855-7041

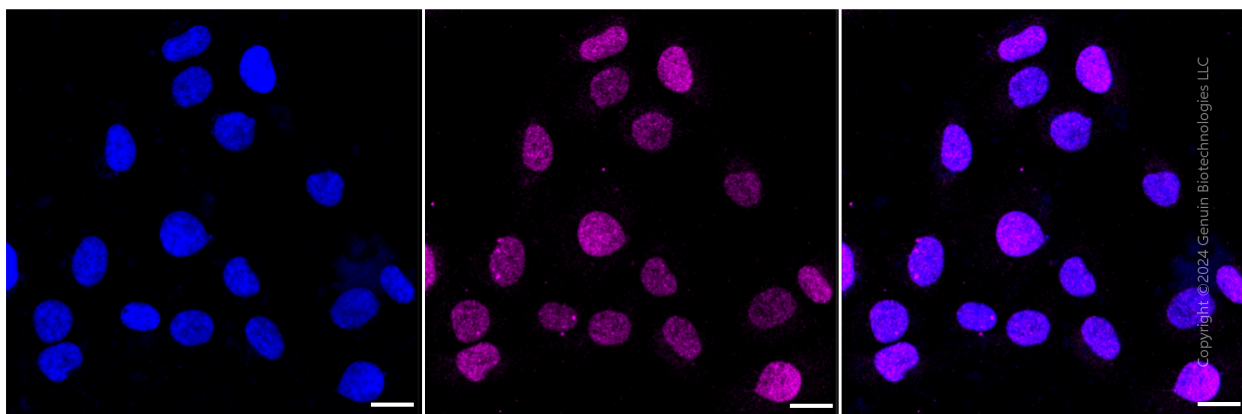
WWW.GENUINBIOTECH.COM

Validation Data

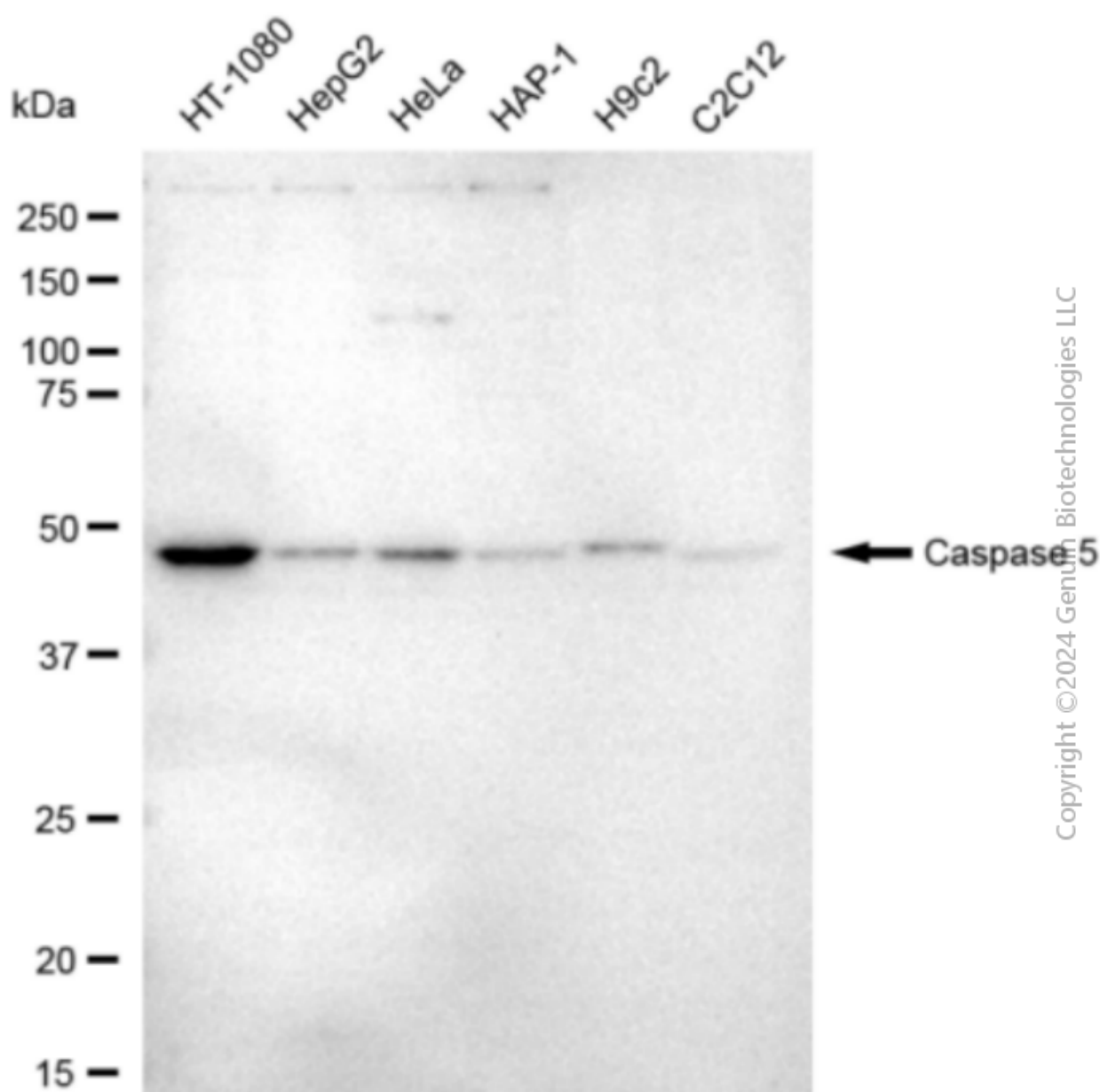


Copyright ©2024 Genuin Biotechnologies LLC

Flow cytometric analysis of Caspase 5 expression in HT-1080 cells using Caspase 5 antibody (Cat#1590, 1:2,000). Green, isotype control; red, Caspase 5.



Copyright ©2024 Genuin Biotechnologies LLC



Western blotting analysis using anti-Caspase 5 antibody (Cat#1590). Total cell lysates (30 μ g) from various cell lines were loaded and separated by SDS-PAGE. The blot was incubated with anti-Caspase 5 antibody (Cat#1590, 1:5,000) and HRP-conjugated goat anti-rabbit secondary antibody (Cat#201, 1:20,000) respectively. Image was developed using FeQ™ ECL Substrate Kit (Cat#226).