

Anti-CCR8 Recombinant Rabbit Monoclonal Antibody



Catalog #: 1591

Aliases

CCR8; C-C Motif Chemokine Receptor 8; TER1; GPR-CY6; CMKBRL2; CKR-L1; CMKBR8; CY6; Chemokine (C-C Motif) Receptor 8; C-C Chemokine Receptor Type 8; CC Chemokine Receptor CHEMR1; Chemokine Receptor-Like 1; CC-CKR-8; CDw198; GPRCY6; CCR-8; CKRL1; Chemokine (C-C) Receptor-Like; CC-Chemokine Receptor Chemr1; Chemokine (C-C) Receptor 8; CC Chemokine Receptor 8; CDw198 Antigen; C-C CKR-8; CDW198

Background

Gene Name: CCR8

NCBI Gene Entry: [1237](#)

UniProt Entry: [P51685](#)

Application Information

Molecular Weight: Predicted, 41 kDa; observed, 41 kDa

Clonality: Rabbit monoclonal antibody

Clone ID: 23GB3350

Species Reactivity: Human, mouse, rat

Applications Tested: Western blotting (WB), flow cytometry (FCM), immunocytochemistry (IC)

Immunogen

A synthesized peptide derived from human CCR8

Isotype

Rabbit IgG

Storage Buffer

Supplied in PBS (pH 7.4) containing 50% glycerol, and 0.02% sodium azide.

Storage

Store at -20 °C for one year.

Recommended Dilutions

Western Blotting (WB): 1:1,000-1:5,000

Flow Cytometry (FCM): 1:2,000

Immunocytochemistry (IC): 1:100-1:1,000

SUPPORT

SUPPORT@GENUINBIOTECH.COM
TEL: +1-540-855-7041

ORDERS

SALES@GENUINBIOTECH.COM
FAX: +1-540-855-7041

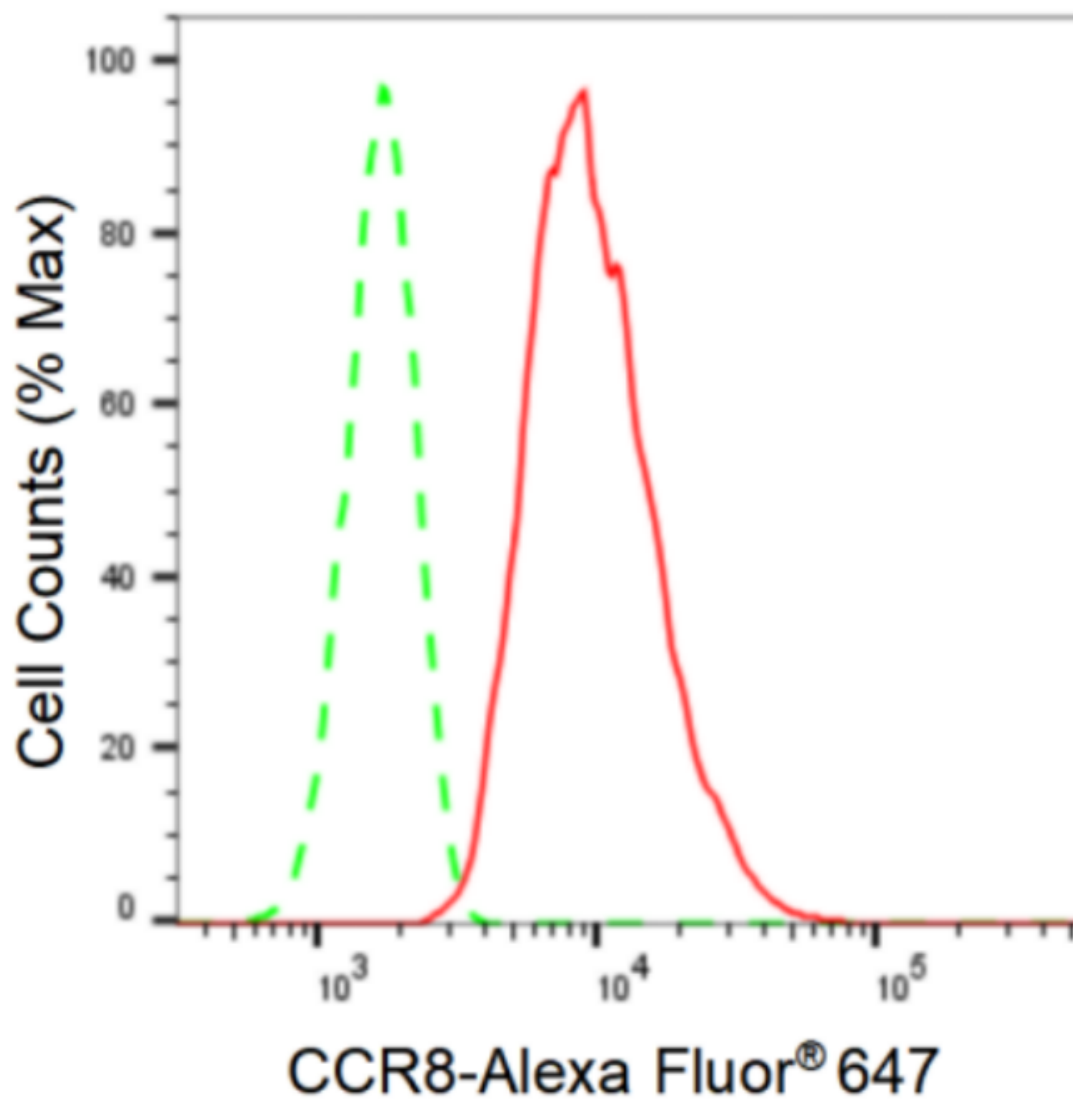
WWW.GENUINBIOTECH.COM

Anti-CCR8 Recombinant Rabbit Monoclonal Antibody

PAGE 2

Note: This product is for research use only.

Validation Data



Copyright ©2024 Genuin Biotechnologies LLC

Flow cytometric analysis of CCR8 expression in H9c2 cells using CCR8 antibody (Cat#1591, 1:2,000). Green, isotype control; red, CCR8.

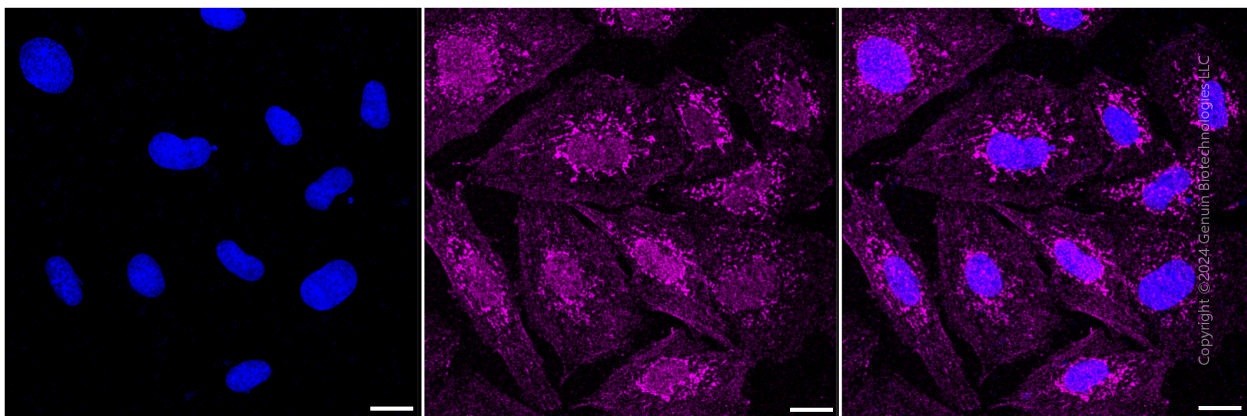
SUPPORT

SUPPORT@GENUINBIOTECH.COM
TEL: +1-540-855-7041

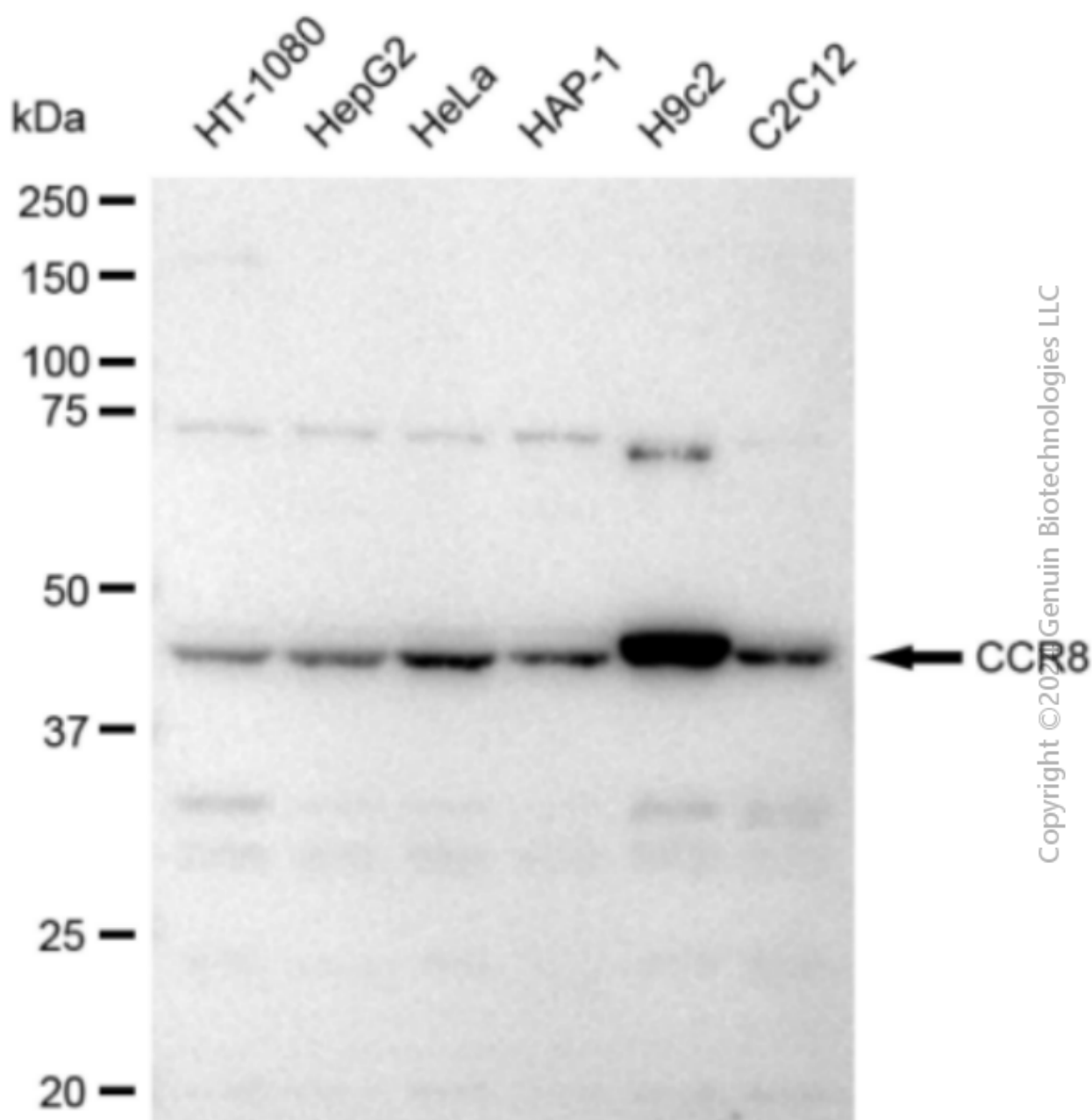
ORDERS

SALES@GENUINBIOTECH.COM
FAX: +1-540-855-7041

WWW.GENUINBIOTECH.COM



Immunocytochemical staining of HT-1080 cells with CCR8 antibody (Cat#1591, 1:1,000). Nuclei were stained blue with DAPI; CCR8 was stained magenta with Alexa Fluor® 647. Images were taken using Leica stellaris 5. Protein abundance based on laser Intensity and smart gain: Medium. Scale bar: 20 μ m.



Western blotting analysis using anti-CCR8 antibody (Cat#1591). Total cell lysates (30 µg) from various cell lines were loaded and separated by SDS-PAGE. The blot was incubated with anti-CCR8 antibody (Cat#1591, 1:5,000) and HRP-conjugated goat anti-rabbit secondary antibody (Cat#201, 1:20,000) respectively. Image was developed using FeQ™ ECL Substrate Kit (Cat#226).