

Anti-CD38 Recombinant Rabbit Monoclonal Antibody



Catalog #: 1593

Aliases

CD38; CD38 Molecule; ADP-Ribosyl Cyclase 1; CADPR1; ADP-Ribosyl Cyclase/Cyclic ADP-Ribose Hydrolase 1; 2'-Phospho-Cyclic-ADP-Ribose Transferase; 2'-Phospho-ADP-Ribosyl Cyclase; Cyclic ADP-Ribose Hydrolase 1; NAD(+) Nucleosidase; CD38 Antigen (P45); ADPRC1; 2'-Phospho-ADP-Ribosyl Cyclase/2'-Phospho-Cyclic-ADP-Ribose Transferase; Ecto-Nicotinamide Adenine Dinucleotide Glycohydrolase; Cluster Of Differentiation 38; CADPR Hydrolase 1; CD38 Antigen; EC 2.4.99.20; EC 3.2.2.-; EC 3.2.2.6; ADPRC1; T10

Background

Gene Name: CD38

NCBI Gene Entry: [952](#)

UniProt Entry: [P28907](#)

Application Information

Molecular Weight: Predicted, 34 kDa; observed, 45 kDa

Clonality: Rabbit monoclonal antibody

Clone ID: 23GB3375

Species Reactivity: Human, mouse, rat

Applications Tested: Western blotting (WB), immunocytochemistry (IC), flow cytometry (FCM)

Immunogen

A synthesized peptide derived from human CD38

Isotype

Rabbit IgG

Storage Buffer

Supplied in PBS (pH 7.4) containing 50% glycerol, and 0.02% sodium azide.

Storage

Store at -20 °C for one year.

Recommended Dilutions

Western Blotting (WB): 1:1,000-1:5,000

Immunocytochemistry (IC): 1:100-1:1,000

Flow Cytometry (FCM): 1:2,000

SUPPORT

SUPPORT@GENUINBIOTECH.COM
TEL: +1-540-855-7041

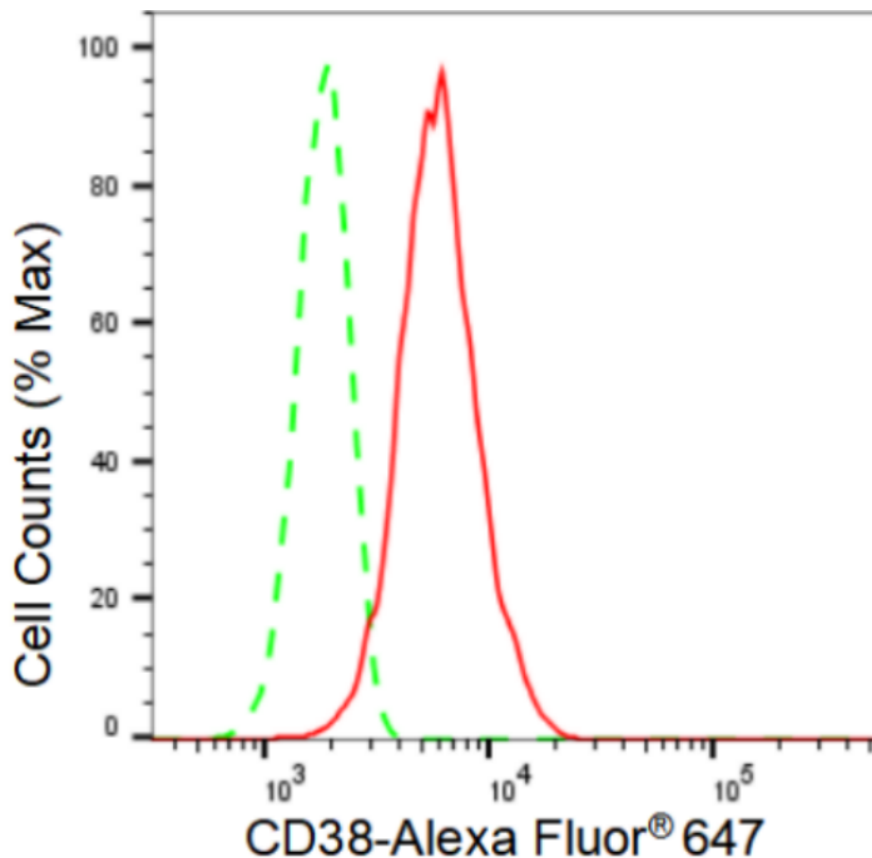
ORDERS

SALES@GENUINBIOTECH.COM
FAX: +1-540-855-7041

WWW.GENUINBIOTECH.COM

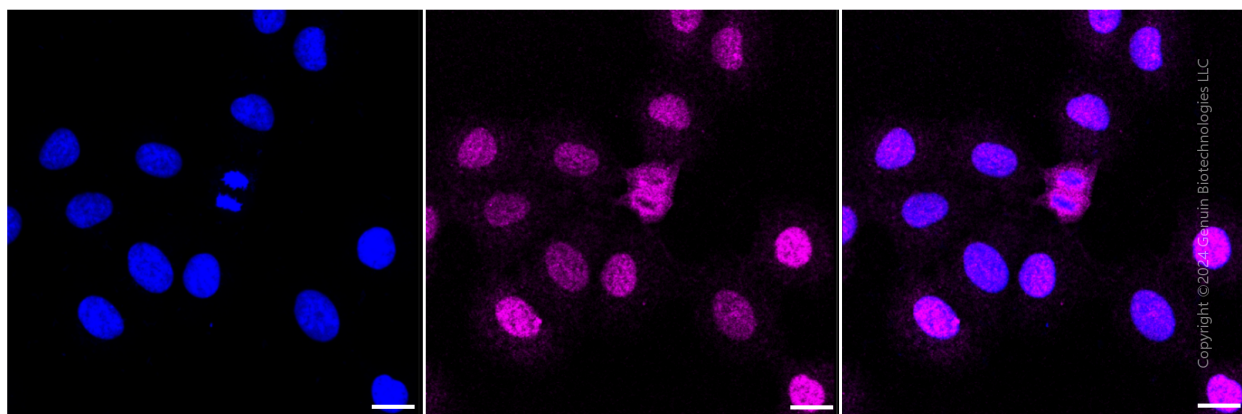
Note: This product is for research use only.

Validation Data



Copyright ©2024 Genuin Biotechnologies LLC

Flow cytometric analysis of CD38 expression in HT-1080 cells using CD38 antibody (Cat#1593, 1:2,000). Green, isotype control; red, CD38.



Copyright ©2024 Genuin Biotechnologies LLC

SUPPORT

SUPPORT@GENUINBIOTECH.COM
TEL: +1-540-855-7041

ORDERS

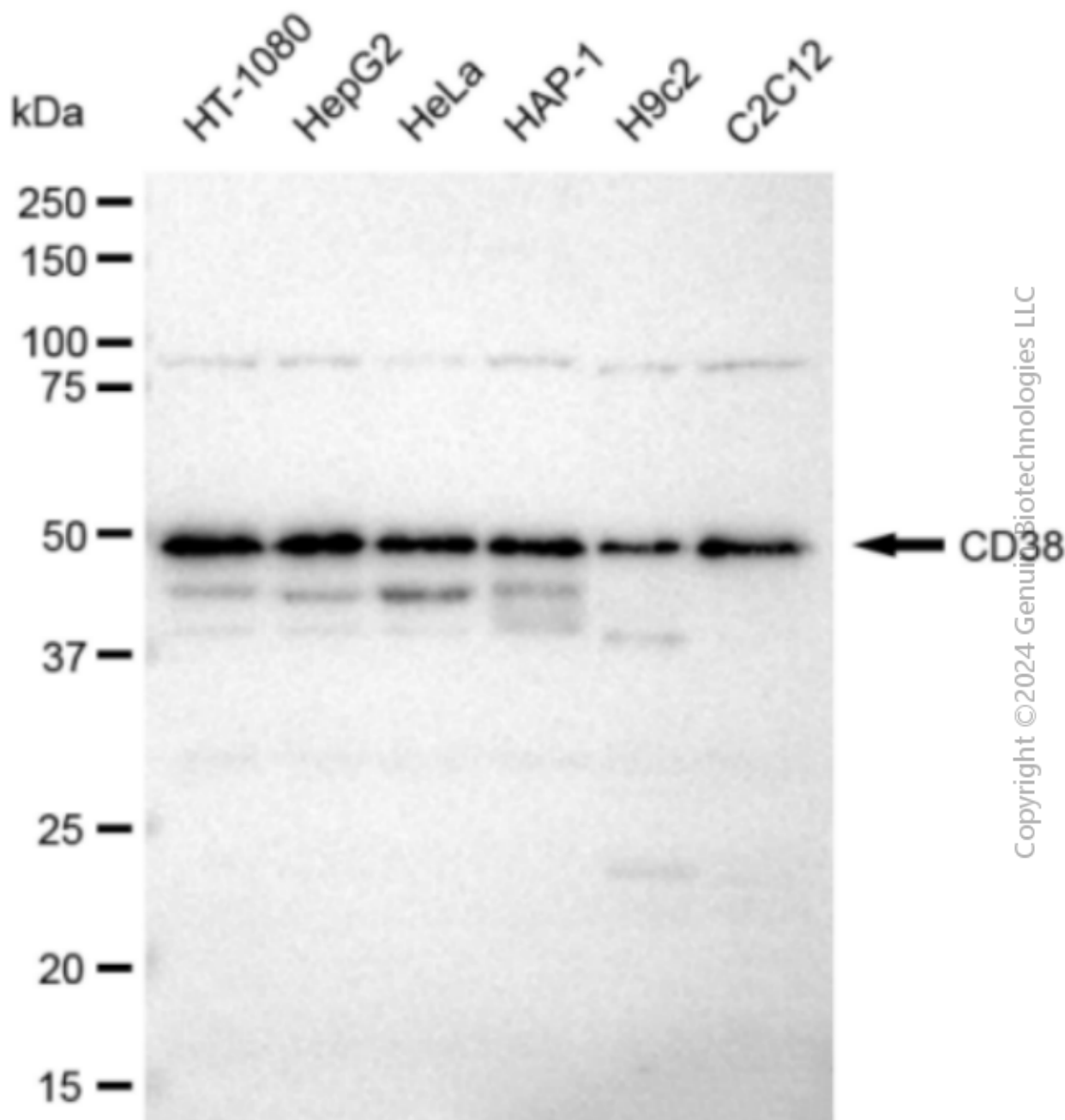
SALES@GENUINBIOTECH.COM
FAX: +1-540-855-7041

WWW.GENUINBIOTECH.COM

Anti-CD38 Recombinant Rabbit Monoclonal Antibody

PAGE 3

Scale bar: 20 μ m.



Copyright © 2024 Genuin Biotechnologies LLC

Western blotting analysis using anti-CD38 antibody (Cat#1593). Total cell lysates (30 μ g) from various cell lines were loaded and separated by SDS-PAGE. The blot was incubated with anti-CD38 antibody (Cat#1593, 1:5,000) and HRP-conjugated goat anti-rabbit secondary antibody (Cat#201, 1:20,000) respectively. Image was developed using FeQ™ ECL Substrate Kit (Cat#226).

SUPPORT

SUPPORT@GENUINBIOTECH.COM
TEL: +1-540-855-7041

ORDERS

SALES@GENUINBIOTECH.COM
FAX: +1-540-855-7041

WWW.GENUINBIOTECH.COM