

Anti-CD40L Recombinant Rabbit Monoclonal Antibody



Catalog #: 1594

Aliases

CD40LG; CD40 Ligand; CD40-L; CD40L; TRAP; TNF-Related Activation Protein; HCD40L; TNFSF5; CD154; HIGM1; T-BAM; Tumor Necrosis Factor (Ligand) Superfamily Member 5; T-B Cell-Activating Molecule; CD40 Antigen Ligand; T-Cell Antigen Gp39; Gp39; IMD3; Tumor Necrosis Factor (Ligand) Superfamily, Member 5 (Hyper-IgM Syndrome); Tumor Necrosis Factor Ligand Superfamily Member 5; Hyper-IgM Syndrome; CD154 Antigen; GP39; IGM

Background

Gene Name: CD40LG

NCBI Gene Entry: [959](#)

UniProt Entry: [P29965](#)

Application Information

Molecular Weight: Predicted, 29 kDa; observed, 36 kDa

Clonality: Rabbit monoclonal antibody

Clone ID: 23GB3380

Species Reactivity: Human, mouse, rat

Applications Tested: Western blotting (WB), flow cytometry (FCM), immunocytochemistry (IC)

Immunogen

A synthesized peptide derived from human CD40L

Isotype

Rabbit IgG

Storage Buffer

Supplied in PBS (pH 7.4) containing 50% glycerol, and 0.02% sodium azide.

Storage

Store at -20 °C for one year.

Recommended Dilutions

Western Blotting (WB): 1:1,000-1:5,000

Flow Cytometry (FCM): 1:2,000

Immunocytochemistry (IC): 1:100-1:1,000

SUPPORT

SUPPORT@GENUINBIOTECH.COM
TEL: +1-540-855-7041

ORDERS

SALES@GENUINBIOTECH.COM
FAX: +1-540-855-7041

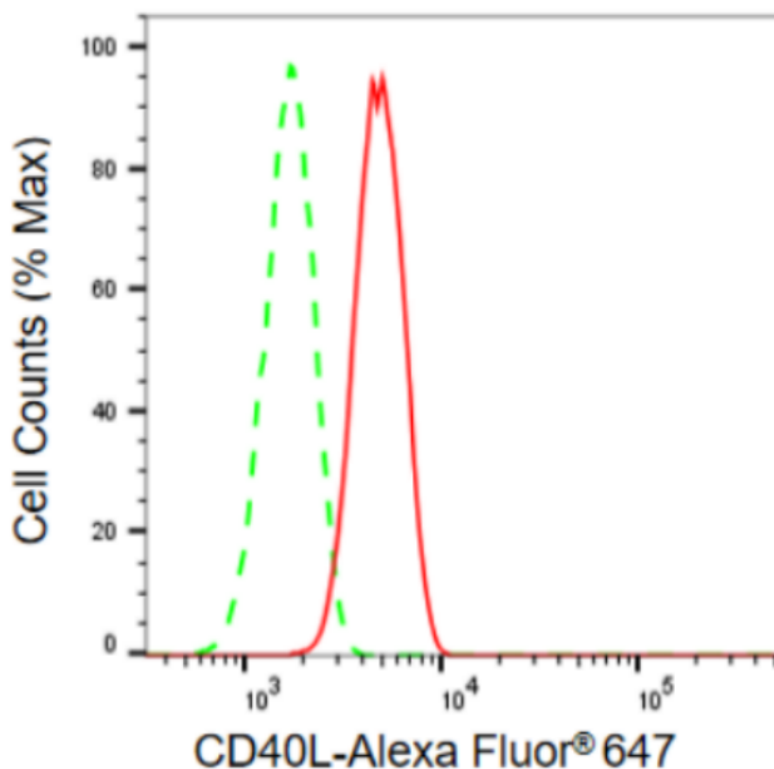
WWW.GENUINBIOTECH.COM

Anti-CD40L Recombinant Rabbit Monoclonal Antibody

PAGE 2

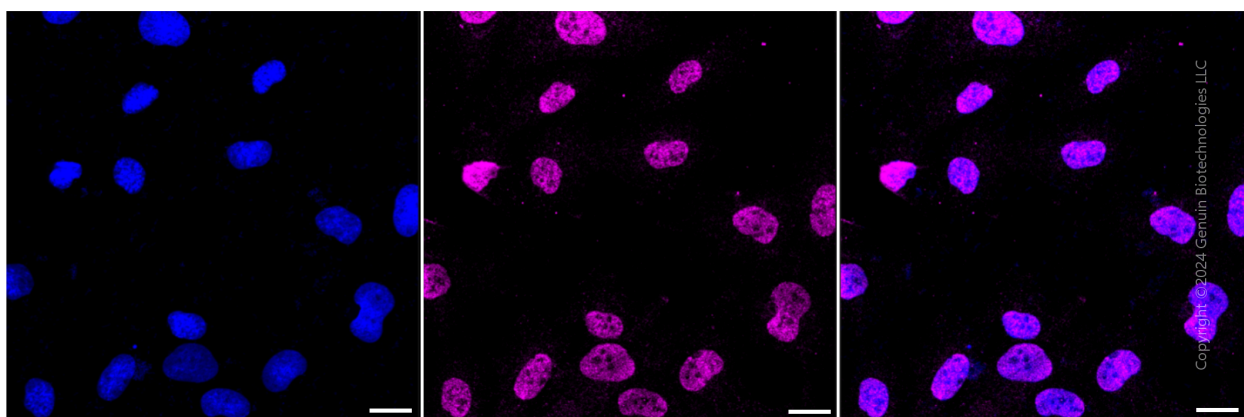
Note: This product is for research use only.

Validation Data



Copyright ©2024 Genuin Biotechnologies LLC

Flow cytometric analysis of CD40L expression in H9c2 cells using CD40L antibody (Cat#1594, 1:2,000). Green, isotype control; red, CD40L.



Copyright ©2024 Genuin Biotechnologies LLC

Immunocytochemical staining of H9c2 cells with CD40L antibody (Cat#1594, 1:1,000). Nuclei were stained blue with DAPI; CD40L was stained magenta with Alexa Fluor® 647. Images were taken using Leica stellaris 5. Protein abundance based on laser Intensity and smart gain: Medium.

SUPPORT

SUPPORT@GENUINBIOTECH.COM
TEL: +1-540-855-7041

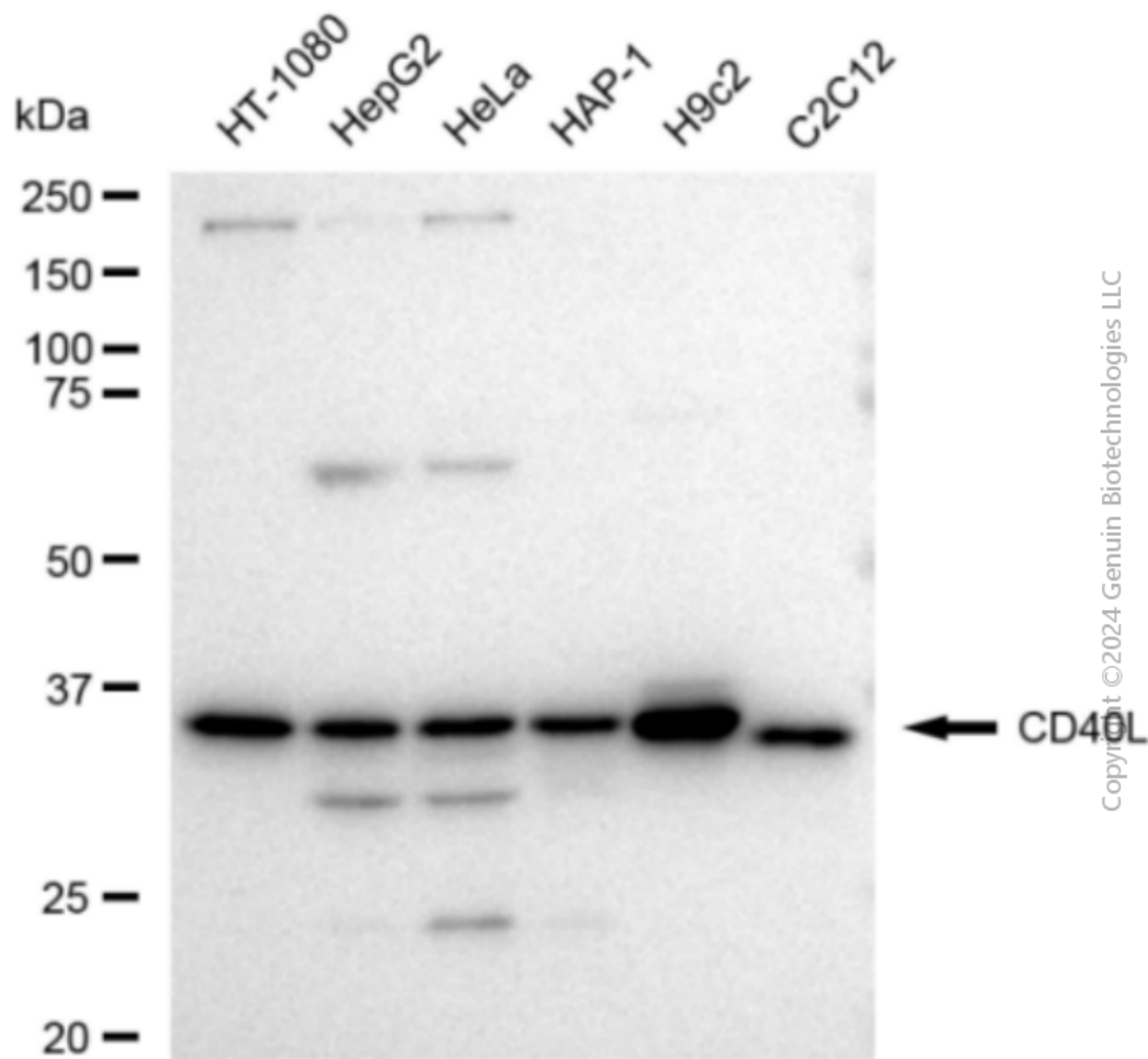
ORDERS

SALES@GENUINBIOTECH.COM
FAX: +1-540-855-7041

WWW.GENUINBIOTECH.COM

Anti-CD40L Recombinant Rabbit Monoclonal Antibody

Scale bar: 20 μ m.



Western blotting analysis using anti-CD40L antibody (Cat#1594). Total cell lysates (30 μ g) from various cell lines were loaded and separated by SDS-PAGE. The blot was incubated with anti-CD40L antibody (Cat#1594, 1:5,000) and HRP-conjugated goat anti-rabbit secondary antibody (Cat#201, 1:20,000) respectively. Image was developed using FeQ™ ECL Substrate Kit (Cat#226).

SUPPORT

SUPPORT@GENUINBIOTECH.COM
TEL: +1-540-855-7041

ORDERS

SALES@GENUINBIOTECH.COM
FAX: +1-540-855-7041

WWW.GENUINBIOTECH.COM