

Anti-CDC34 Recombinant Rabbit Monoclonal Antibody



Catalog #: 1595

Aliases

CDC34; Cell Division Cycle 34, Ubiquitin Conjugating Enzyme; UBE2R1; E2-CDC34; UBC3; (E3-Independent) E2 Ubiquitin-Conjugating Enzyme R1; Ubiquitin-Conjugating Enzyme E2-CDC34; Ubiquitin-Conjugating Enzyme E2 R1; E2 Ubiquitin-Conjugating Enzyme R1; Ubiquitin-Protein Ligase R1; UBCH3; Ubiquitin-Conjugating Enzyme E2-32 KDa Complementing; Ubiquitin-Conjugating Enzyme E2-32 KDa Complementing; Ubiquitin Conjugating Enzyme E2 R1; Cell Division Cycle 34 Homolog; Ubiquitin Carrier Protein; EC 2.3.2.23; EC 2.3.2.24; EC 6.3.2.19

Background

Gene Name: CDC34

NCBI Gene Entry: [997](#)

UniProt Entry: [P49427](#)

Application Information

Molecular Weight: Predicted, 27 kDa; observed, 27 kDa

Clonality: Rabbit monoclonal antibody

Clone ID: 23GB3435

Species Reactivity: Human, mouse, rat

Applications Tested: Western blotting (WB), flow cytometry (FCM), immunocytochemistry (IC)

Immunogen

A synthesized peptide derived from human CDC34

Isotype

Rabbit IgG

Storage Buffer

Supplied in PBS (pH 7.4) containing 50% glycerol, and 0.02% sodium azide.

Storage

Store at -20 °C for one year.

Recommended Dilutions

Western Blotting (WB): 1:1,000-1:5,000

Flow Cytometry (FCM): 1:2,000

SUPPORT

SUPPORT@GENUINBIOTECH.COM
TEL: +1-540-855-7041

ORDERS

SALES@GENUINBIOTECH.COM
FAX: +1-540-855-7041

WWW.GENUINBIOTECH.COM

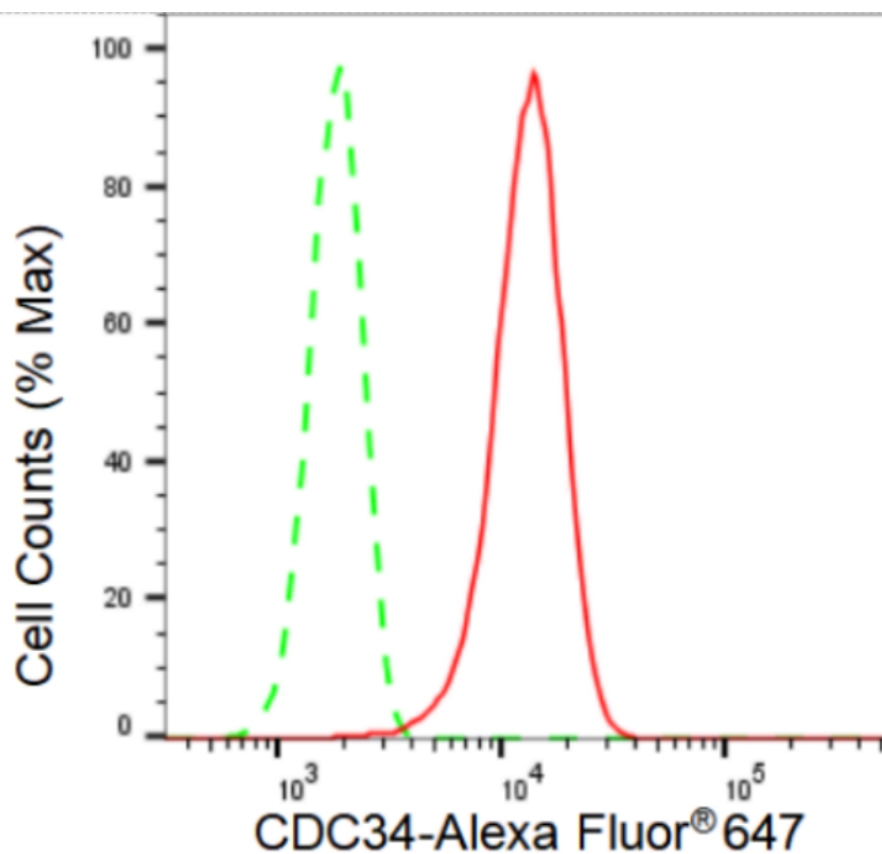
Anti-CDC34 Recombinant Rabbit Monoclonal Antibody

PAGE 2

Immunocytochemistry (IC): 1:100-1:1,000

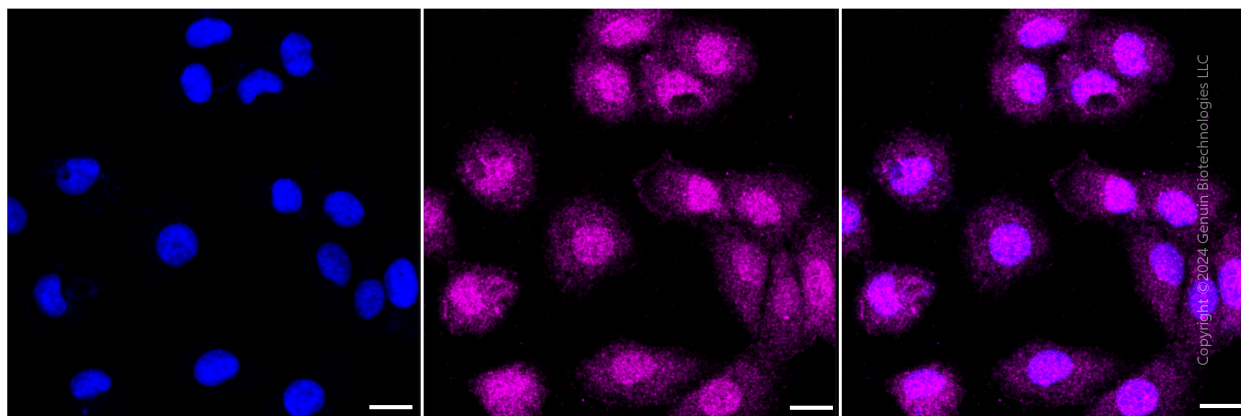
Note: This product is for research use only.

Validation Data



Copyright ©2024 Genuin Biotechnologies LLC

Flow cytometric analysis of CDC34 expression in HT-1080 cells using CDC34 antibody (Cat#1595, 1:2,000). Green, isotype control; red, CDC34.



Copyright ©2024 Genuin Biotechnologies LLC

Immunocytochemical staining of HT-1080 cells with CDC34 antibody (Cat#1595, 1:1,000).

SUPPORT

SUPPORT@GENUINBIOTECH.COM
TEL: +1-540-855-7041

ORDERS

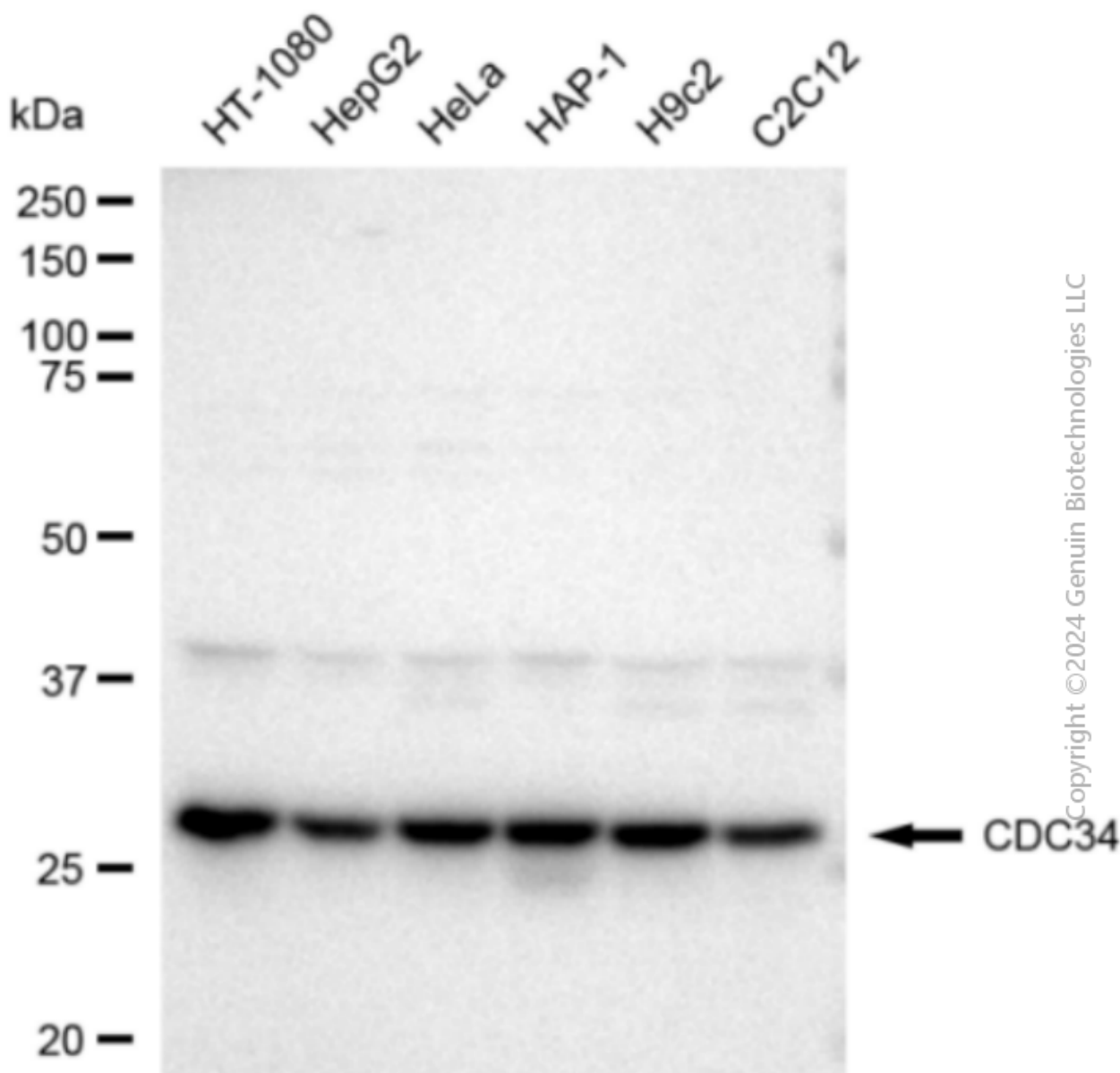
SALES@GENUINBIOTECH.COM
FAX: +1-540-855-7041

WWW.GENUINBIOTECH.COM

Anti-CDC34 Recombinant Rabbit Monoclonal Antibody

PAGE 3

Nuclei were stained blue with DAPI; CDC34 was stained magenta with Alexa Fluor® 647. Images were taken using Leica stellaris 5. Protein abundance based on laser Intensity and smart gain: Medium. Scale bar: 20 μ m.



Western blotting analysis using anti-CDC34 antibody (Cat#1595). Total cell lysates (30 μ g) from various cell lines were loaded and separated by SDS-PAGE. The blot was incubated with anti-CDC34 antibody (Cat#1595, 1:5,000) and HRP-conjugated goat anti-rabbit secondary antibody (Cat#201, 1:20,000) respectively. Image was developed using FeQ™ ECL Substrate Kit (Cat#226).

SUPPORT

SUPPORT@GENUINBIOTECH.COM
TEL: +1-540-855-7041

ORDERS

SALES@GENUINBIOTECH.COM
FAX: +1-540-855-7041

WWW.GENUINBIOTECH.COM