

Anti-COPS5 Recombinant Rabbit Monoclonal Antibody



Catalog #: 1599

Aliases

COPS5; COP9 Signalosome Subunit 5; JAB1; SGN5; CSN5; MOV-34; Jun Activation Domain-Binding Protein 1; COP9 Signalosome Complex Subunit 5; Signalosome Subunit 5; COP9 (Constitutive Photomorphogenic, Arabidopsis, Homolog) Subunit 5; COP9 Constitutive Photomorphogenic Homolog Subunit 5 (Arabidopsis); COP9 Constitutive Photomorphogenic Homolog Subunit 5; Testis Secretory Sperm-Binding Protein Li 231m; 38 KDa Mov34 Homolog; EC 3.4.-.-

Background

Gene Name: COPS5

NCBI Gene Entry: [10987](#)

UniProt Entry: [Q92905](#)

Application Information

Molecular Weight: Predicted, 38 kDa; observed, 35 kDa

Clonality: Rabbit monoclonal antibody

Clone ID: 23GB3490

Species Reactivity: Human, mouse, rat

Applications Tested: Western blotting (WB), immunocytochemistry (IC)

Immunogen

A synthesized peptide derived from human JAB1

Isotype

Rabbit IgG

Storage Buffer

Supplied in PBS (pH 7.4) containing 50% glycerol, and 0.02% sodium azide.

Storage

Store at -20 °C for one year.

Recommended Dilutions

Western Blotting (WB): 1:1,000-1:5,000

Immunocytochemistry (IC): 1:100-1:1,000

SUPPORT

SUPPORT@GENUINBIOTECH.COM
TEL: +1-540-855-7041

ORDERS

SALES@GENUINBIOTECH.COM
FAX: +1-540-855-7041

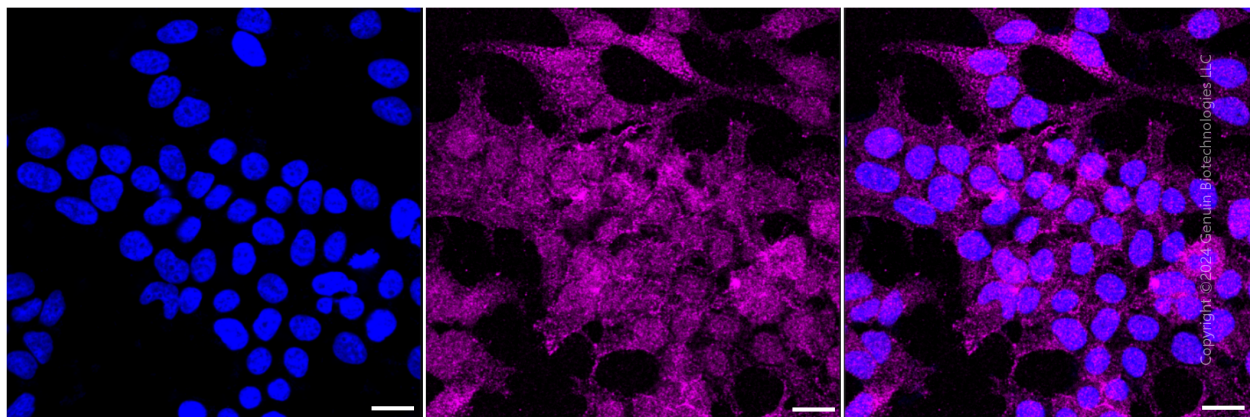
WWW.GENUINBIOTECH.COM

Anti-COPS5 Recombinant Rabbit Monoclonal Antibody

PAGE 2

Note: This product is for research use only.

Validation Data



Immunocytochemical staining of HeLa cells with COPS5 antibody (Cat#1599, 1:1,000). Nuclei were stained blue with DAPI; COPS5 was stained magenta with Alexa Fluor® 647. Images were taken using Leica stellaris 5. Protein abundance based on laser Intensity and smart gain: Medium. Scale bar: 20 μ m.

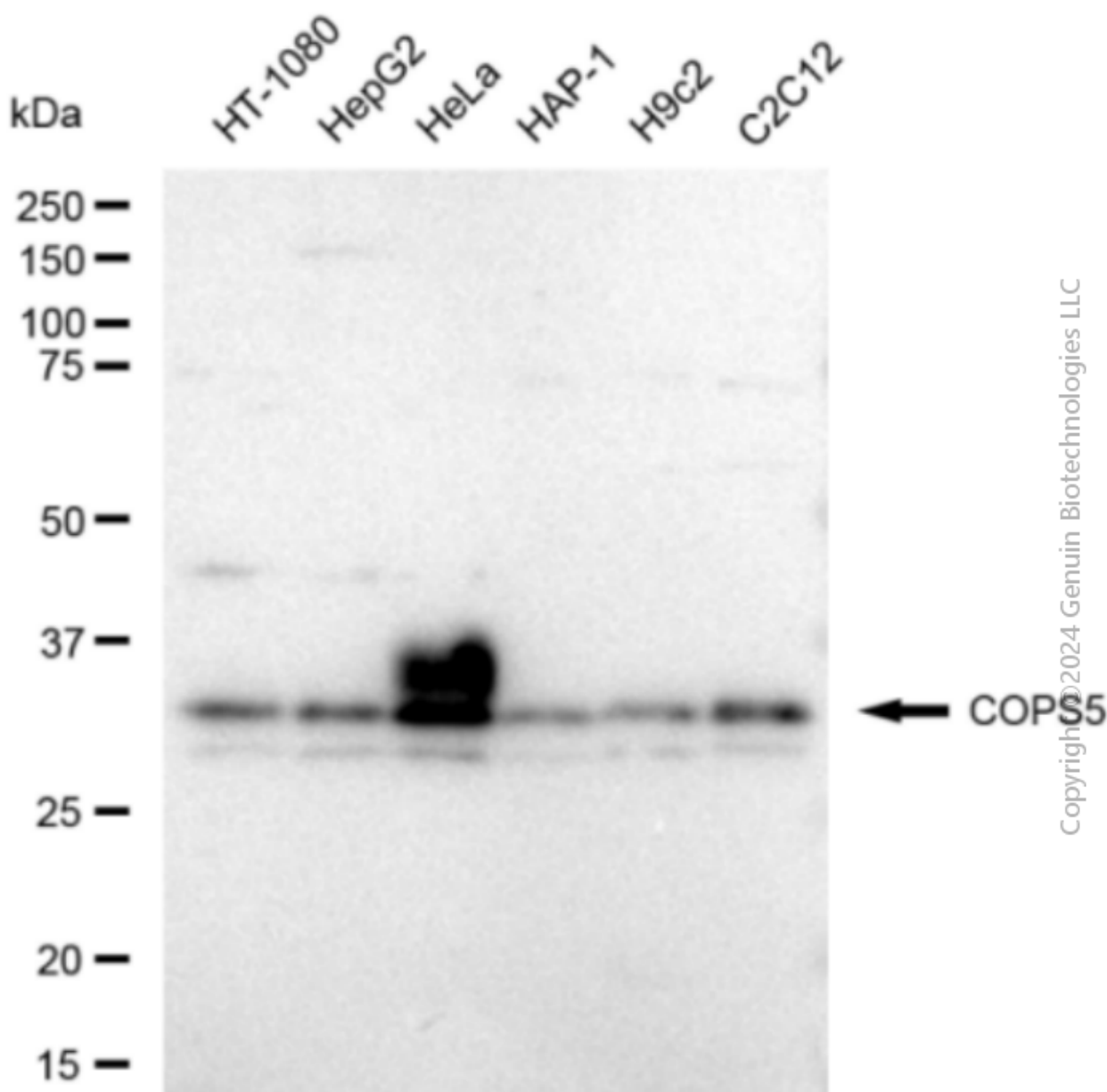
SUPPORT

SUPPORT@GENUINBIOTECH.COM
TEL: +1-540-855-7041

ORDERS

SALES@GENUINBIOTECH.COM
FAX: +1-540-855-7041

WWW.GENUINBIOTECH.COM



Western blotting analysis using anti-COPS5 antibody (Cat#1599). Total cell lysates (30 μ g) from various cell lines were loaded and separated by SDS-PAGE. The blot was incubated with anti-COPS5 antibody (Cat#1599, 1:5,000) and HRP-conjugated goat anti-rabbit secondary antibody (Cat#201, 1:20,000) respectively. Image was developed using FeQ™ ECL Substrate Kit (Cat#226).