

# Anti-ELOVL5 Recombinant Rabbit Monoclonal Antibody



**Catalog #: 1605**

## Aliases

ELOVL5; ELOVL Fatty Acid Elongase 5; HELO1; DJ483K16.1; ELOVL Family Member 5, Elongation Of Long Chain Fatty Acids (FEN1/Elo2, SUR4/Elo3-Like, Yeast); Elongation Of Very Long Chain Fatty Acids Protein 5; Very Long Chain 3-Ketoacyl-CoA Synthase 5; Very Long Chain 3-Oxoacyl-CoA Synthase 5; 3-Keto Acyl-CoA Synthase ELOVL5; Spinocerebellar Ataxia 38; Fatty Acid Elongase 1; ELOVL FA Elongase 5; SCA38; Homolog Of Yeast Long Chain Polyunsaturated Fatty Acid Elongation Enzyme; EC 2.3.1.199; ELOVL2

## Background

Gene Name: ELOVL5

NCBI Gene Entry: [60481](#)

UniProt Entry: [Q9NYP7](#)

## Application Information

Molecular Weight: Predicted, 35 kDa; observed, 26 kDa

Clonality: Rabbit monoclonal antibody

Clone ID: 23GB3580

Species Reactivity: Human

Applications Tested: Western blotting (WB), flow cytometry (FCM), immunocytochemistry (IC)

## Immunogen

A synthesized peptide derived from human ELOVL5

## Isotype

Rabbit IgG

## Storage Buffer

Supplied in PBS (pH 7.4) containing 50% glycerol, and 0.02% sodium azide.

## Storage

Store at -20 °C for one year.

## Recommended Dilutions

Western Blotting (WB): 1:1,000-1:5,000

Flow Cytometry (FCM): 1:2,000

Immunocytochemistry (IC): 1:100-1:1,000

---

### SUPPORT

SUPPORT@GENUINBIOTECH.COM  
TEL: +1-540-855-7041

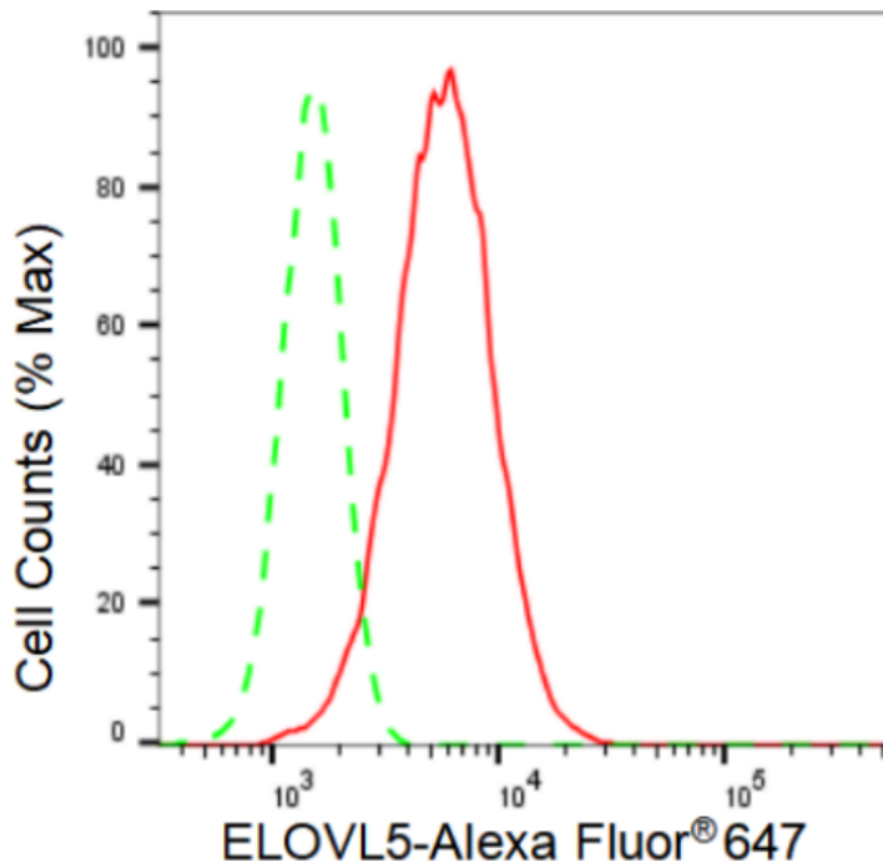
### ORDERS

SALES@GENUINBIOTECH.COM  
FAX: +1-540-855-7041

[WWW.GENUINBIOTECH.COM](http://WWW.GENUINBIOTECH.COM)

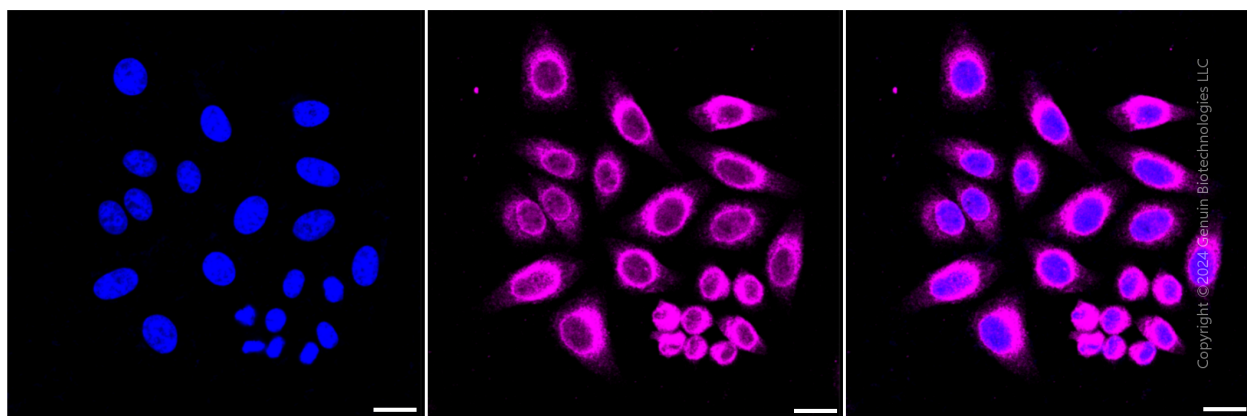
**Note:** This product is for research use only.

## Validation Data



Copyright ©2024 Genuin Biotechnologies LLC

Flow cytometric analysis of ELOVL5 expression in HepG2 cells using ELOVL5 antibody (Cat#1605, 1:2,000). Green, isotype control; red, ELOVL5.



Copyright ©2024 Genuin Biotechnologies LLC

### SUPPORT

SUPPORT@GENUINBIOTECH.COM  
TEL: +1-540-855-7041

### ORDERS

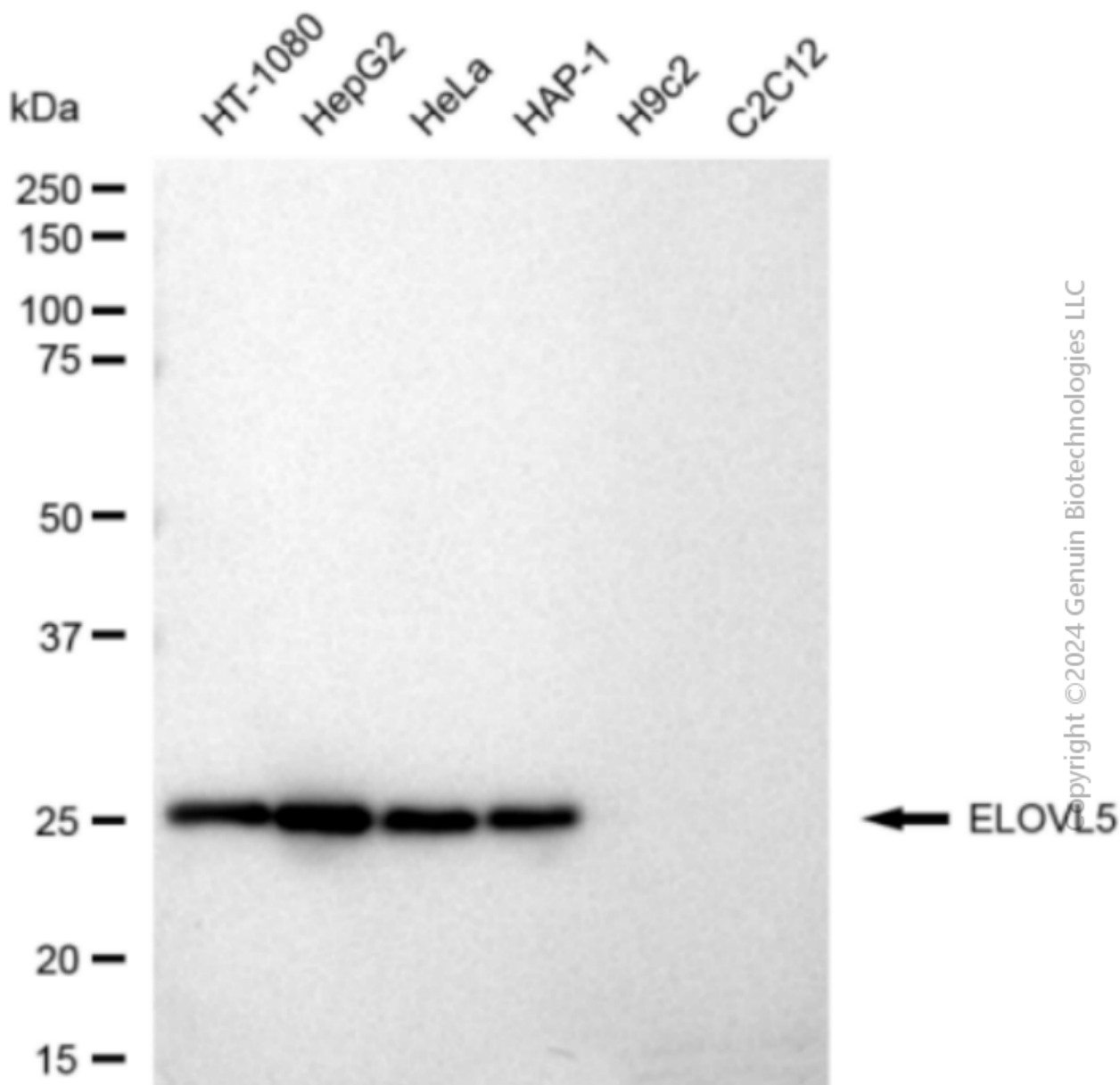
SALES@GENUINBIOTECH.COM  
FAX: +1-540-855-7041

[WWW.GENUINBIOTECH.COM](http://WWW.GENUINBIOTECH.COM)

## Anti-ELOVL5 Recombinant Rabbit Monoclonal Antibody

PAGE 3

gain: Medium. Scale bar: 20  $\mu$ m.



Western blotting analysis using anti-ELOVL5 antibody (Cat#1605). Total cell lysates (30  $\mu$ g) from various cell lines were loaded and separated by SDS-PAGE. The blot was incubated with anti-ELOVL5 antibody (Cat#1605, 1:5,000) and HRP-conjugated goat anti-rabbit secondary antibody (Cat#201, 1:20,000) respectively. Image was developed using FeQ<sup>TM</sup> ECL Substrate Kit (Cat#226).

### SUPPORT

SUPPORT@GENUINBIOTECH.COM  
TEL: +1-540-855-7041

### ORDERS

SALES@GENUINBIOTECH.COM  
FAX: +1-540-855-7041

WWW.GENUINBIOTECH.COM