

Catalog #: 1608

Aliases

ABO; ABO, Alpha 1-3-N-Acetylgalactosaminyltransferase And Alpha 1-3-Galactosyltransferase; A3GALNT; A3GALT1; ABO Blood Group (Transferase A, Alpha 1-3-N; Acetylgalactosaminyltransferase; Transferase B, Alpha 1-3-Galactosyltransferase); Histo-Blood Group ABO System Transferase; NAGAT; Glycoprotein-Fucosylgalactoside Alpha-N-Acetylgalactosaminyltransferase; Fucosylglycoprotein Alpha-N-Acetylgalactosaminyltransferase; Glycoprotein-Fucosylgalactoside Alpha-Galactosyltransferase; Fucosylglycoprotein 3-Alpha-Galactosyltransferase; B(A) Alpha-1,3-Galactosyltransferase; Histo-Blood Group A2 Transferase; Histo-Blood Group A Transferase; Histo-Blood Group B Transferase; A Transferase; B Transferase; EC 2.4.1.40; EC 2.4.1.37; GTB

Background

Gene Name: ABO

NCBI Gene Entry: [28](#)

UniProt Entry: [P16442](#)

Application Information

Molecular Weight: Predicted, 41 kDa; observed, 41 kDa

Clonality: Rabbit monoclonal antibody

Clone ID: 23GB3610

Species Reactivity: Human, mouse, rat

Applications Tested: Western blotting (WB), flow cytometry (FCM)

Immunogen

A synthesized peptide derived from human ABO

Isotype

Rabbit IgG

Storage Buffer

Supplied in PBS (pH 7.4) containing 50% glycerol, and 0.02% sodium azide.

Storage

Store at -20 °C for one year.

Recommended Dilutions

SUPPORT

SUPPORT@GENUINBIOTECH.COM
TEL: +1-540-855-7041

ORDERS

SALES@GENUINBIOTECH.COM
FAX: +1-540-855-7041

WWW.GENUINBIOTECH.COM

Anti-ABO Recombinant Rabbit Monoclonal Antibody

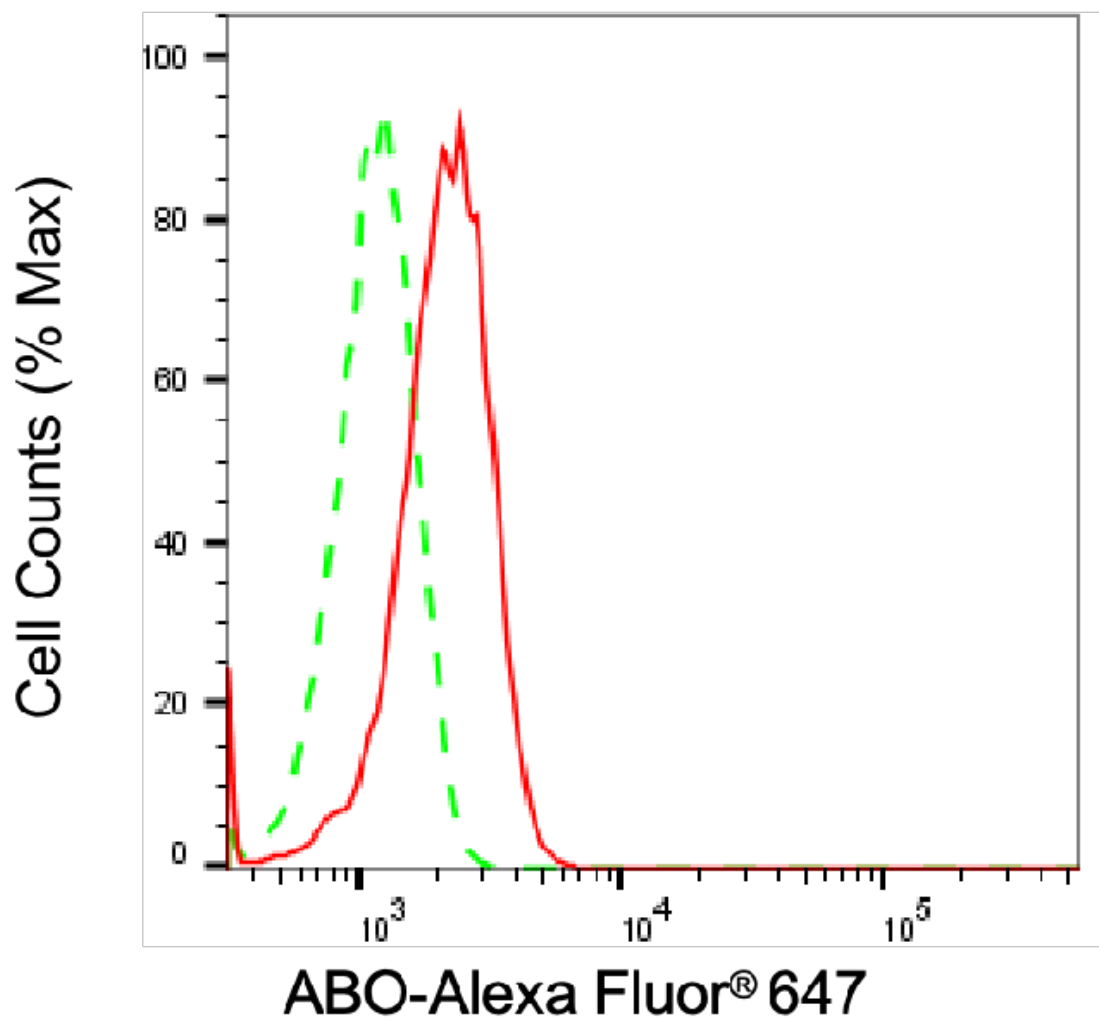
PAGE 2

Western Blotting (WB): 1:1,000-1:5,000

Flow Cytometry (FCM) : 1:2,000

Note: This product is for research use only.

Validation Data



Copyright ©2025 Genuin Biotechnologies LLC

Flow cytometric analysis of ABO expression in HepG2 cells using anti-ABO antibody (Cat#1608, 1:2,000). Green, isotype control; red, ABO.

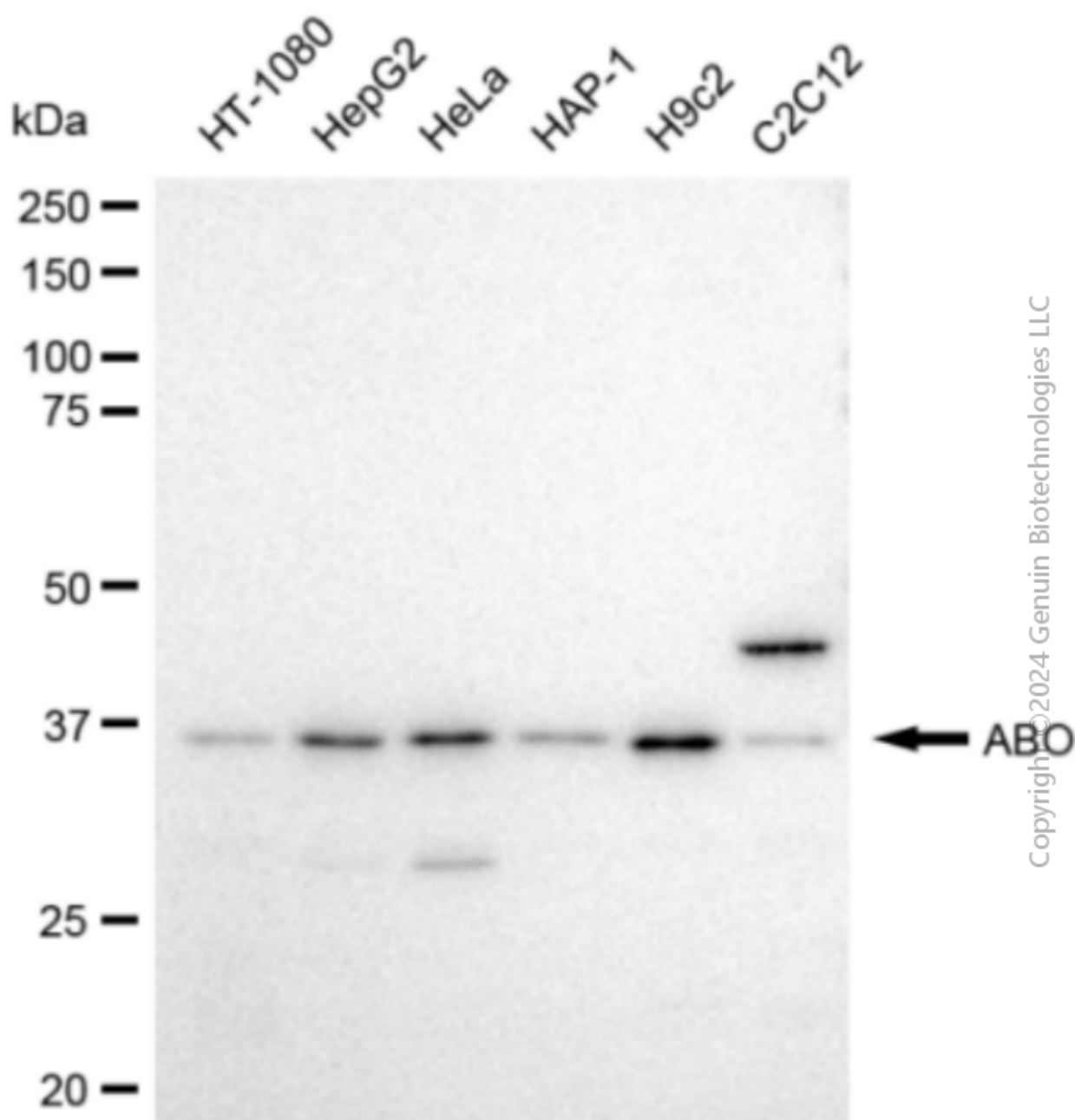
SUPPORT

SUPPORT@GENUINBIOTECH.COM
TEL: +1-540-855-7041

ORDERS

SALES@GENUINBIOTECH.COM
FAX: +1-540-855-7041

WWW.GENUINBIOTECH.COM



Western blotting analysis using anti-ABO antibody (Cat#1608). Total cell lysates (30 µg) from various cell lines were loaded and separated by SDS-PAGE. The blot was incubated with anti-ABO antibody (Cat#1608, 1:5,000) and HRP-conjugated goat anti-rabbit secondary antibody (Cat#201, 1:20,000) respectively. Image was developed using FeQ™ ECL Substrate Kit (Cat#226).