

Anti-Apolipoprotein F Recombinant Rabbit Monoclonal Antibody



Catalog #: 1612

Aliases

APOF; Apolipoprotein F; Lipid Transfer Inhibitor Protein; Apo-F; LTIP

Background

Gene Name: APOF

NCBI Gene Entry: [319](#)

UniProt Entry: [Q13790](#)

Application Information

Molecular Weight: Predicted, 35 kDa; observed, 35 kDa

Clonality: Rabbit monoclonal antibody

Clone ID: 23GB3670

Species Reactivity: Mouse, rat

Applications Tested: Western blotting (WB), flow cytometry (FCM), immunocytochemistry (IC)

Immunogen

A synthesized peptide derived from human Apolipoprotein F

Isotype

Rabbit IgG

Storage Buffer

Supplied in PBS (pH 7.4) containing 50% glycerol, and 0.02% sodium azide.

Storage

Store at -20 °C for one year.

Recommended Dilutions

Western Blotting (WB): 1:1,000-1:5,000

Flow Cytometry (FCM): 1:2,000

Immunocytochemistry (IC): 1:100-1:1,000

Note: This product is for research use only.

Validation Data

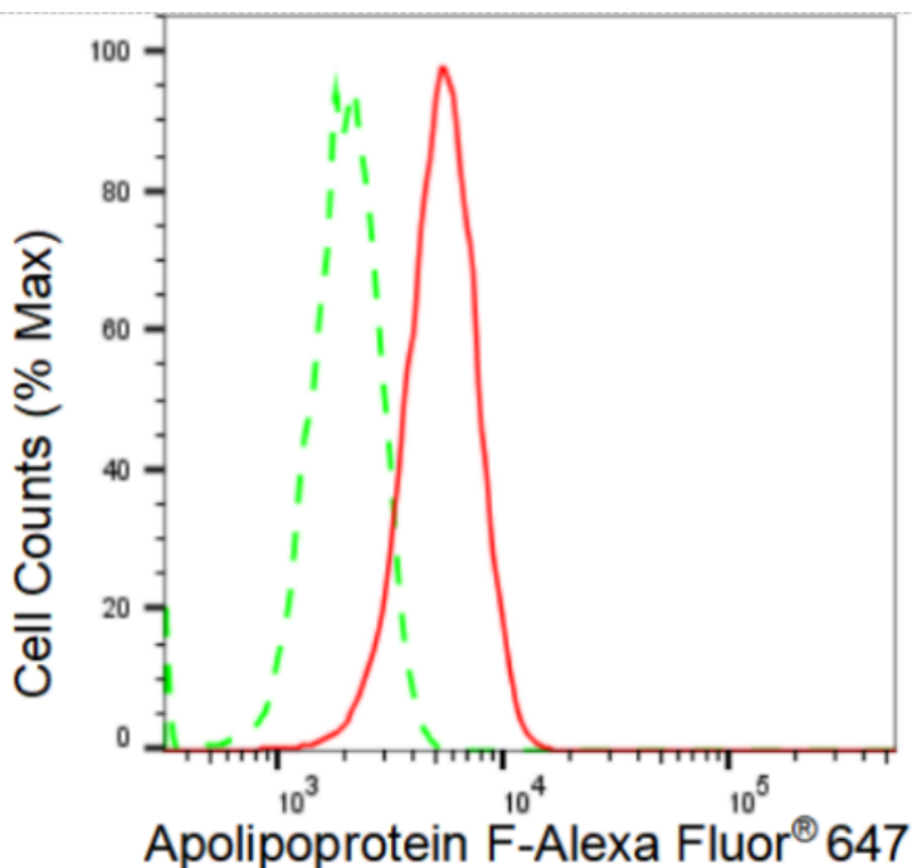
SUPPORT

SUPPORT@GENUINBIOTECH.COM
TEL: +1-540-855-7041

ORDERS

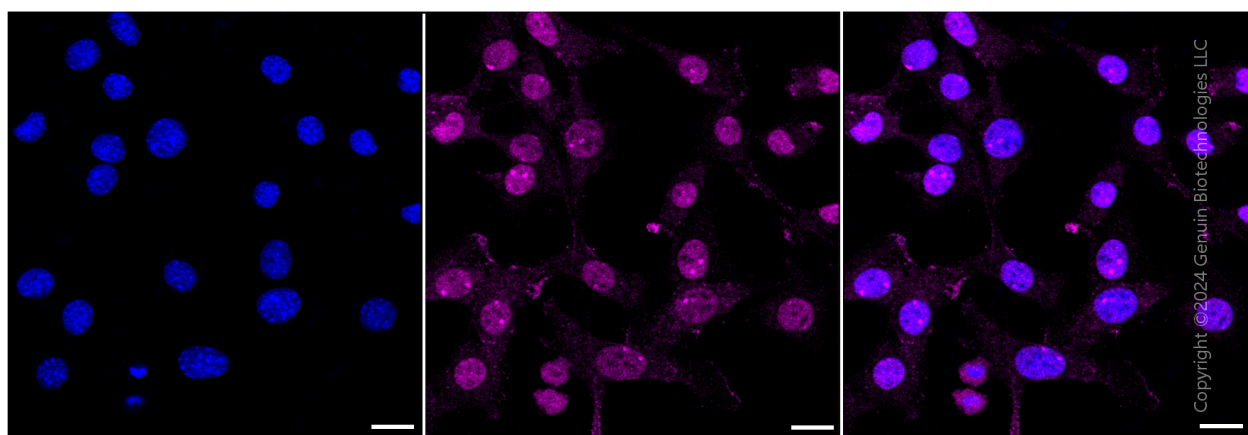
SALES@GENUINBIOTECH.COM
FAX: +1-540-855-7041

WWW.GENUINBIOTECH.COM



Copyright ©2024 Genuin Biotechnologies LLC

Flow cytometric analysis of Apolipoprotein F expression in C2C12 cells using Apolipoprotein F antibody (Cat#1612, 1:2000). Green, isotype control; red, Apolipoprotein F.



Copyright ©2024 Genuin Biotechnologies LLC

Immunocytochemical staining of C2C12 cells with Apolipoprotein F antibody (Cat#1612, 1:1,000). Nuclei were stained blue with DAPI; Apolipoprotein F was stained magenta with Alexa Fluor® 647. Images were taken using Leica stellaris 5. Protein abundance based on laser Intensity and smart gain: Medium. Scale bar: 20 μ m.

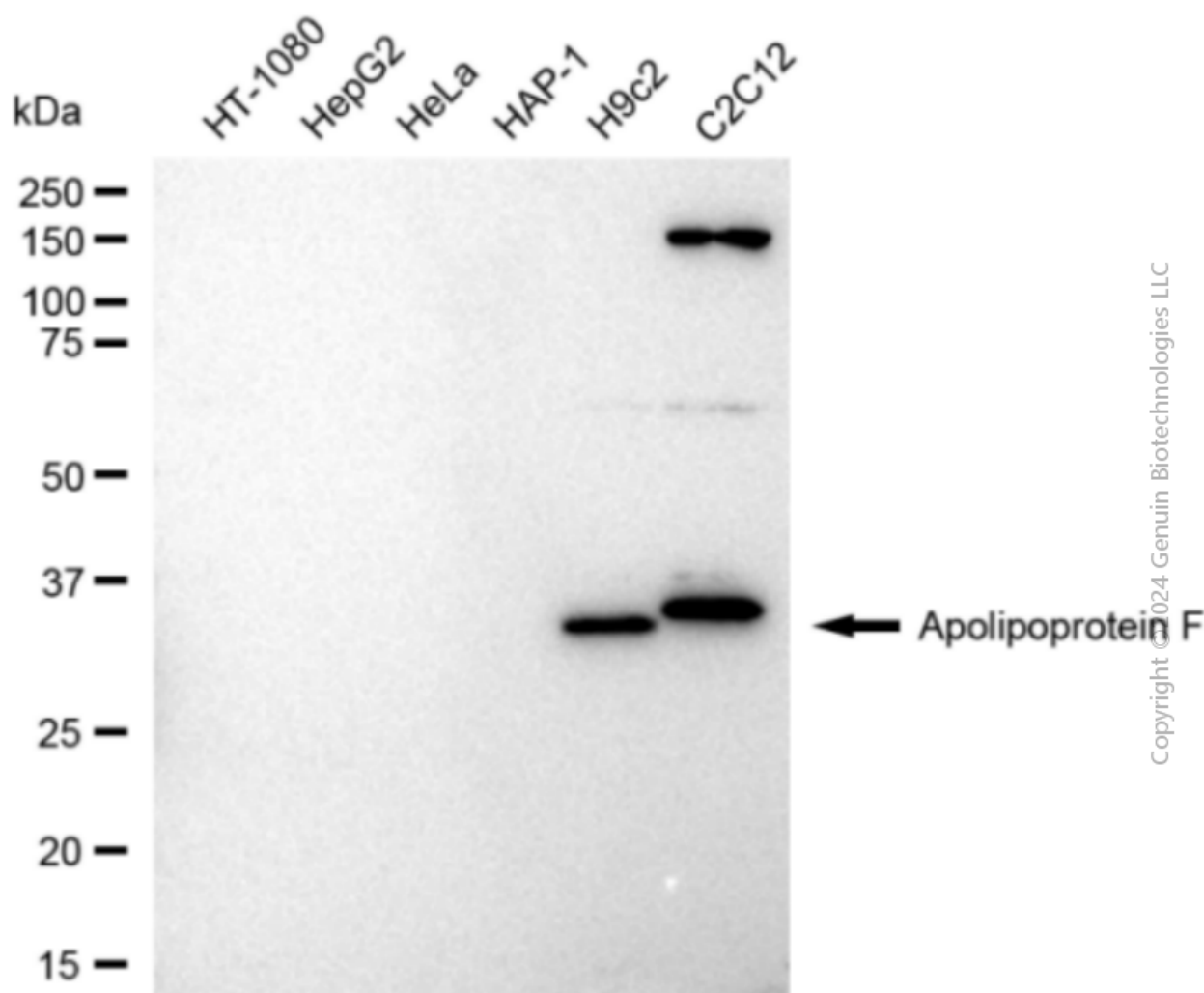
SUPPORT

SUPPORT@GENUINBIOTECH.COM
TEL: +1-540-855-7041

ORDERS

SALES@GENUINBIOTECH.COM
FAX: +1-540-855-7041

WWW.GENUINBIOTECH.COM



Western blotting analysis using anti-Apolipoprotein F antibody (Cat#1612). Total cell lysates (30 μ g) from various cell lines were loaded and separated by SDS-PAGE. The blot was incubated with anti-Apolipoprotein F antibody (Cat#1612, 1:5,000) and HRP-conjugated goat anti-rabbit secondary antibody (Cat#201, 1:20,000) respectively. Image was developed using FeQ™ ECL Substrate Kit (Cat#226).