

Anti-Biglycan Recombinant Rabbit Monoclonal Antibody



Catalog #: 1615

Aliases

BGN; Biglycan; SLRR1A; DSPG1; PG-S1; Dermatan Sulphate Proteoglycan I; Bone/Cartilage Proteoglycan-I; Small Leucine-Rich Protein 1A; Bone/Cartilage Proteoglycan I; Biglycan Proteoglycan; SEMDX; MRLS; PGI

Background

Gene Name: BGN

NCBI Gene Entry: [633](#)

UniProt Entry: [P21810](#)

Application Information

Molecular Weight: Predicted, 42 kDa; observed, 42 kDa

Clonality: Rabbit monoclonal antibody

Clone ID: 23GB3700

Species Reactivity: Mouse, rat

Applications Tested: Western blotting (WB), flow cytometry (FCM), immunocytochemistry (IC)

Immunogen

A synthesized peptide derived from human Biglycan

Isotype

Rabbit IgG

Storage Buffer

Supplied in PBS (pH 7.4) containing 50% glycerol, and 0.02% sodium azide.

Storage

Store at -20 °C for one year.

Recommended Dilutions

Western Blotting (WB): 1:1,000-1:5,000

Flow Cytometry (FCM): 1:2,000

Immunocytochemistry (IC): 1:100-1:1,000

Note: This product is for research use only.

SUPPORT

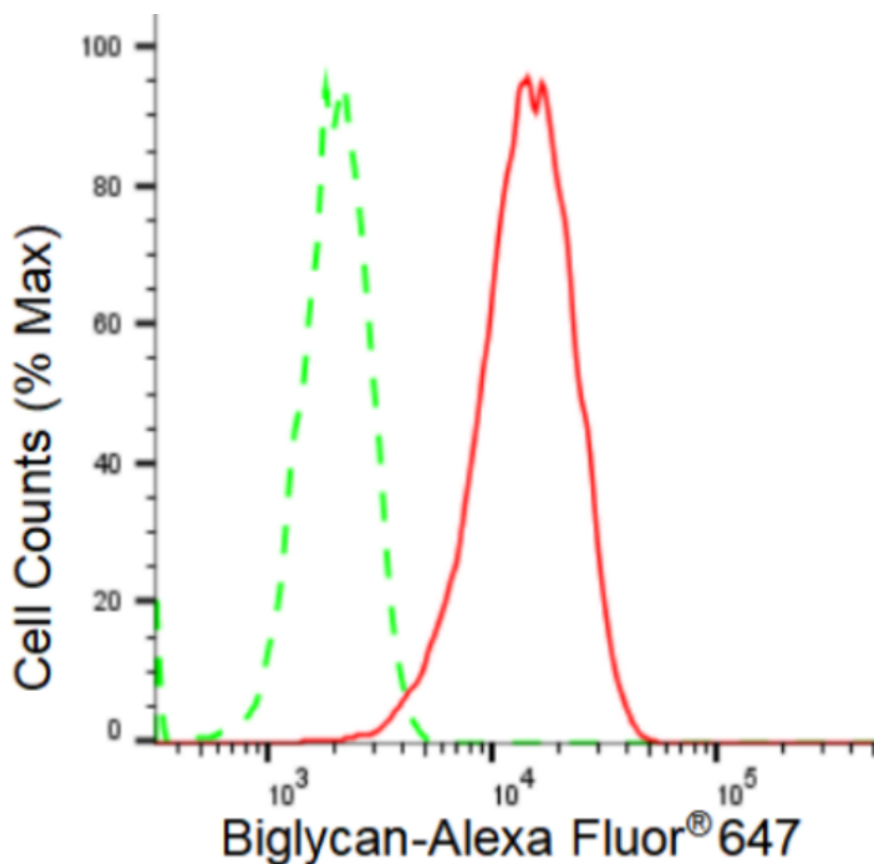
SUPPORT@GENUINBIOTECH.COM
TEL: +1-540-855-7041

ORDERS

SALES@GENUINBIOTECH.COM
FAX: +1-540-855-7041

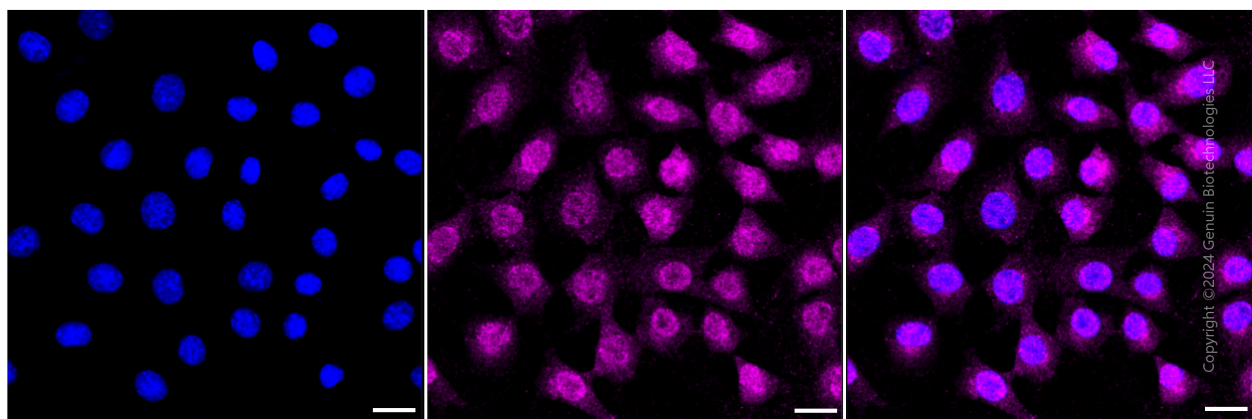
WWW.GENUINBIOTECH.COM

Validation Data



Copyright ©2024 Genuin Biotechnologies LLC

Flow cytometric analysis of Biglycan expression in C2C12 cells using Biglycan antibody (Cat#1615, 1:2000). Green, isotype control; red, Biglycan.



Copyright ©2024 Genuin Biotechnologies LLC

Immunocytochemical staining of C2C12 cells with Biglycan antibody (Cat#1615, 1:1,000). Nuclei were stained blue with DAPI; Biglycan was stained magenta with Alexa Fluor® 647. Images were taken using Leica stellaris 5. Protein abundance based on laser Intensity and smart gain: Medium. Scale bar: 20 μ m.

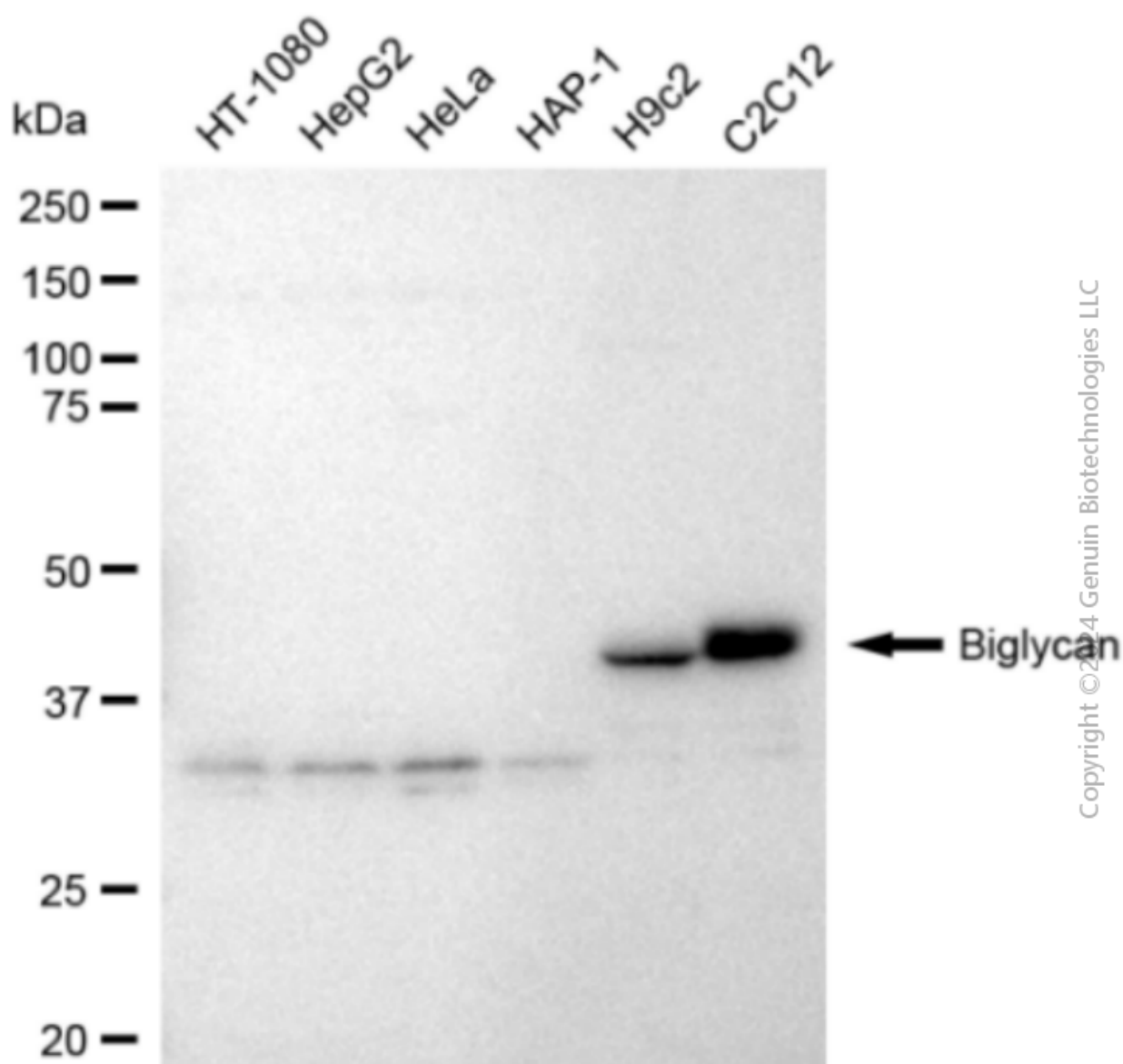
SUPPORT

SUPPORT@GENUINBIOTECH.COM
TEL: +1-540-855-7041

ORDERS

SALES@GENUINBIOTECH.COM
FAX: +1-540-855-7041

WWW.GENUINBIOTECH.COM



Western blotting analysis using anti-Biglycan antibody (Cat#1615). Total cell lysates (30 µg) from various cell lines were loaded and separated by SDS-PAGE. The blot was incubated with anti-Biglycan antibody (Cat#1615, 1:5,000) and HRP-conjugated goat anti-rabbit secondary antibody (Cat#201, 1:20,000) respectively. Image was developed using FeQ™ ECL Substrate Kit (Cat#226).