

Anti-CDC123 Recombinant Rabbit Monoclonal Antibody



Catalog #: 1619

Aliases

CDC123; Cell Division Cycle 123; D123; Cell Division Cycle Protein 123 Homolog; C10orf7; HT-1080; PZ32; Cell Division Cycle 123 Homolog (S. Cerevisiae); Chromosome 10 Open Reading Frame 7; Cell Division Cycle 123 Homolog; Protein D123; C10ORF7

Background

Gene Name: CDC123
NCBI Gene Entry: [8872](#)
UniProt Entry: [O75794](#)

Application Information

Molecular Weight: Predicted, 39 kDa; observed, 39 kDa
Clonality: Rabbit monoclonal antibody
Clone ID: 23GB3755
Species Reactivity: Human
Applications Tested: Western blotting (WB), flow cytometry (FCM), immunocytochemistry (IC)

Immunogen

A synthesized peptide derived from human CDC123

Isotype

Rabbit IgG

Storage Buffer

Supplied in PBS (pH 7.4) containing 50% glycerol, and 0.02% sodium azide.

Storage

Store at -20 °C for one year.

Recommended Dilutions

Western Blotting (WB): 1:1,000-1:5,000
Flow Cytometry (FCM): 1:2,000
Immunocytochemistry (IC): 1:100-1:1,000

Note: This product is for research use only.

SUPPORT

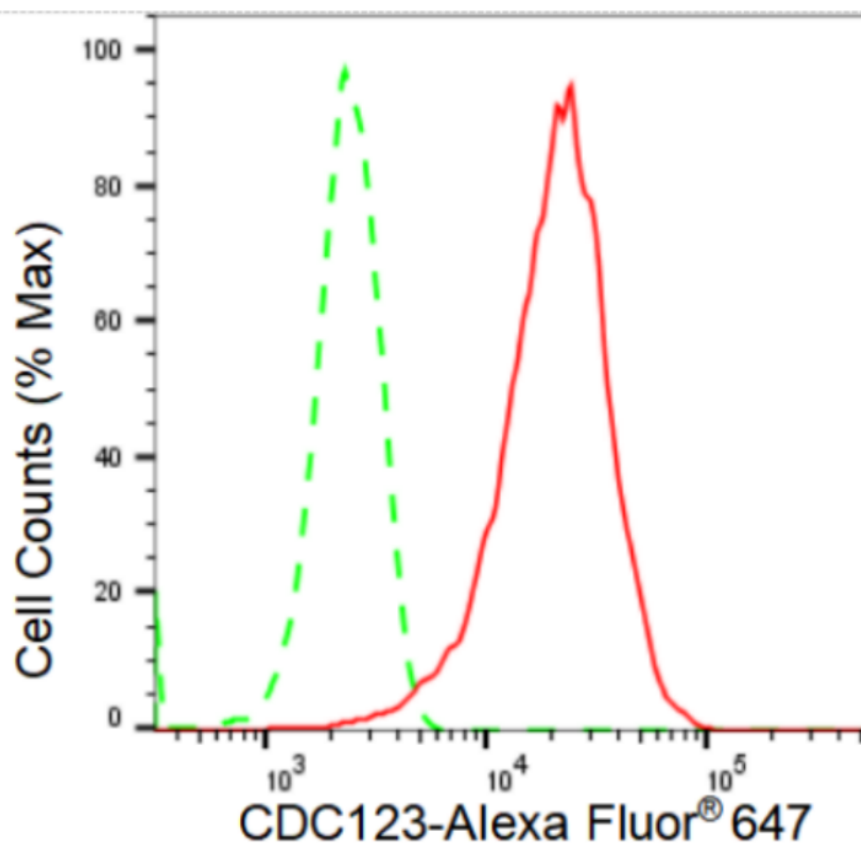
SUPPORT@GENUINBIOTECH.COM
TEL: +1-540-855-7041

ORDERS

SALES@GENUINBIOTECH.COM
FAX: +1-540-855-7041

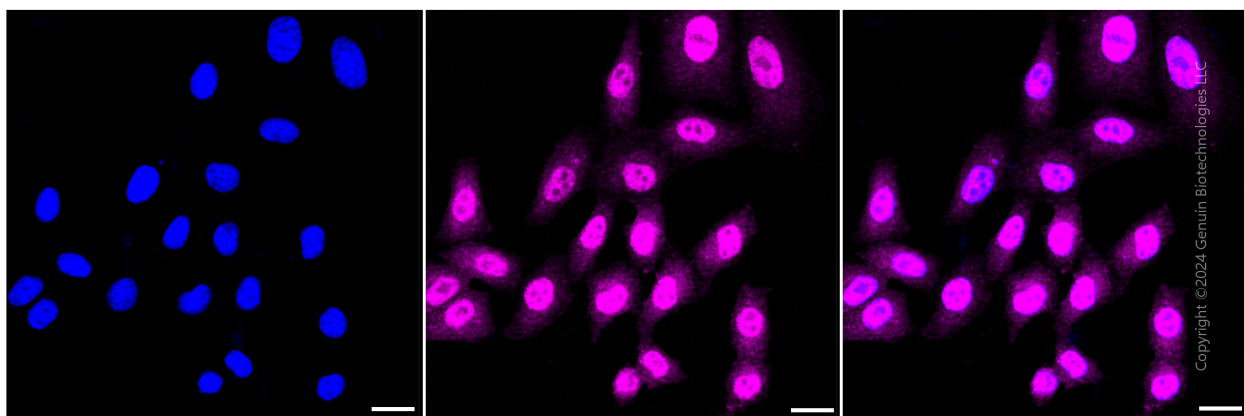
WWW.GENUINBIOTECH.COM

Validation Data



Copyright ©2024 Genuin Biotechnologies LLC

Flow cytometric analysis of CDC123 expression in HepG2 cells using CDC123 antibody (Cat#1619, 1:2,000). Green, isotype control; red, CDC123.



Copyright ©2024 Genuin Biotechnologies LLC

Immunocytochemical staining of HepG2 cells with CDC123 antibody (Cat#1619, 1:1,000). Nuclei were stained blue with DAPI; CDC123 was stained magenta with Alexa Fluor® 647. Images were taken using Leica stellaris 5. Protein abundance based on laser Intensity and smart gain: Medium. Scale bar: 20 μ m.

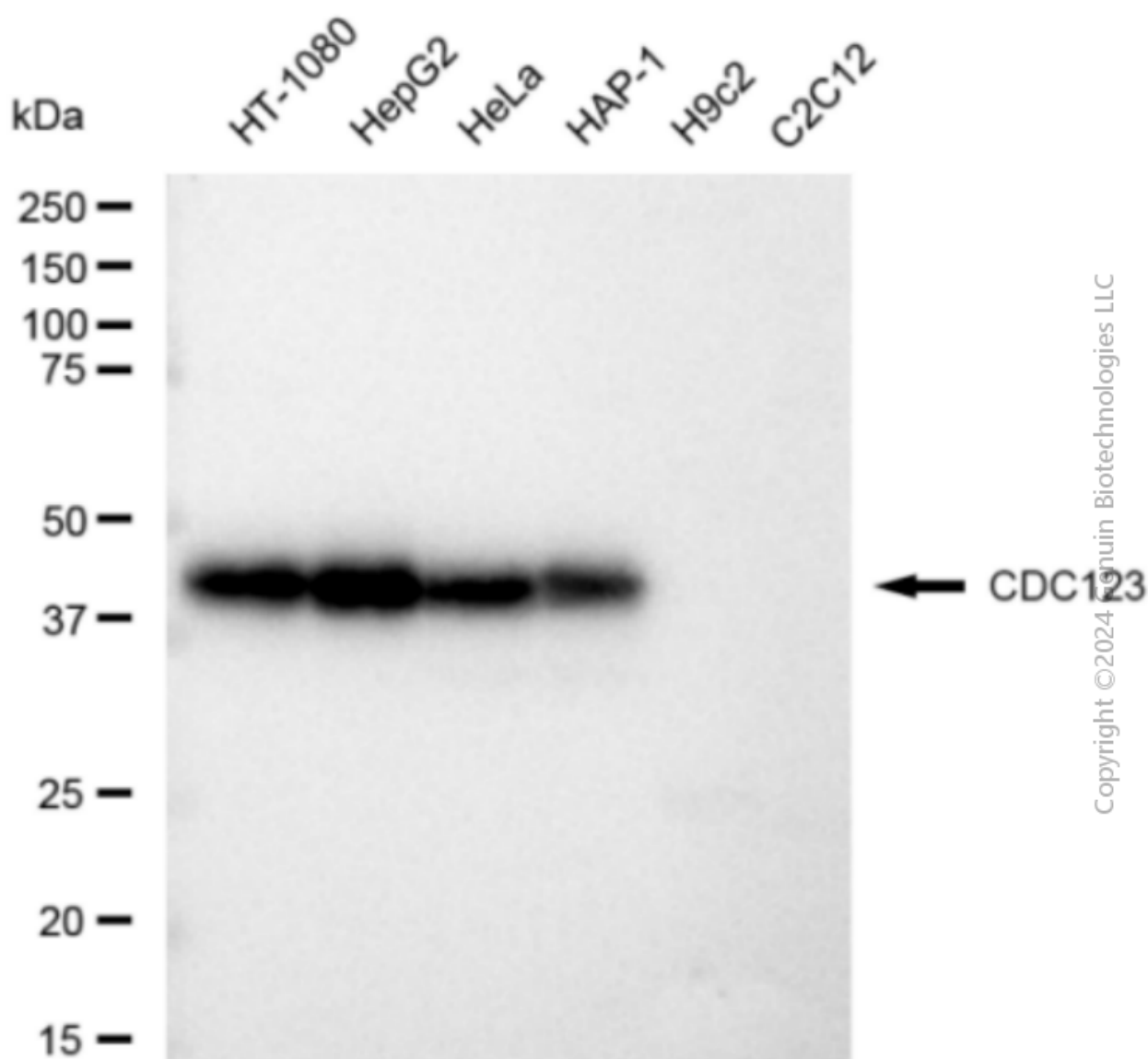
SUPPORT

SUPPORT@GENUINBIOTECH.COM
TEL: +1-540-855-7041

ORDERS

SALES@GENUINBIOTECH.COM
FAX: +1-540-855-7041

WWW.GENUINBIOTECH.COM



Western blotting analysis using anti-CDC123 antibody (Cat#1619). Total cell lysates (30 µg) from various cell lines were loaded and separated by SDS-PAGE. The blot was incubated with anti-CDC123 antibody (Cat#1619, 1:5,000) and HRP-conjugated goat anti-rabbit secondary antibody (Cat#201, 1:20,000) respectively. Image was developed using FeQ™ ECL Substrate Kit (Cat#226).