

Anti-cAMP responsive element binding protein 1 Recombinant Rabbit Monoclonal Antibody



Catalog #: 1621

Aliases

CAMP Responsive Element Binding Protein 1; Cyclic AMP-Responsive Element-Binding Protein 1; CREB-1; Cyclic Adenosine 3',5'-Monophosphate Response Element-Binding Protein CREB; Cyclic Adenosine 3',5'-Monophosphate Response Element Binding Protein; CAMP-Responsive Element-Binding Protein 1; CAMP-Response Element-Binding Protein-1; Active Transcription Factor CREB; Transactivator Protein; CREB

Background

Gene Name: CREB1

NCBI Gene Entry: [1385](#)

UniProt Entry: [P16220](#)

Application Information

Molecular Weight: Predicted, 37 kDa; observed, 40 kDa

Clonality: Rabbit monoclonal antibody

Clone ID: 23GB1340

Species Reactivity: Human, mouse, rat

Applications Tested: Western blotting (WB), flow cytometry (FCM), immunocytochemistry (IC)

Immunogen

A synthesized peptide derived from human CREB

Isotype

Rabbit IgG

Storage Buffer

Supplied in PBS (pH 7.4) containing 50% glycerol, and 0.02% sodium azide.

Storage

Store at -20 °C for one year.

Recommended Dilutions

Western Blotting (WB): 1:1,000-1:5,000

Flow Cytometry (FCM): 1:2,000

Immunocytochemistry (IC): 1:100-1:1,000

SUPPORT

SUPPORT@GENUINBIOTECH.COM
TEL: +1-540-855-7041

ORDERS

SALES@GENUINBIOTECH.COM
FAX: +1-540-855-7041

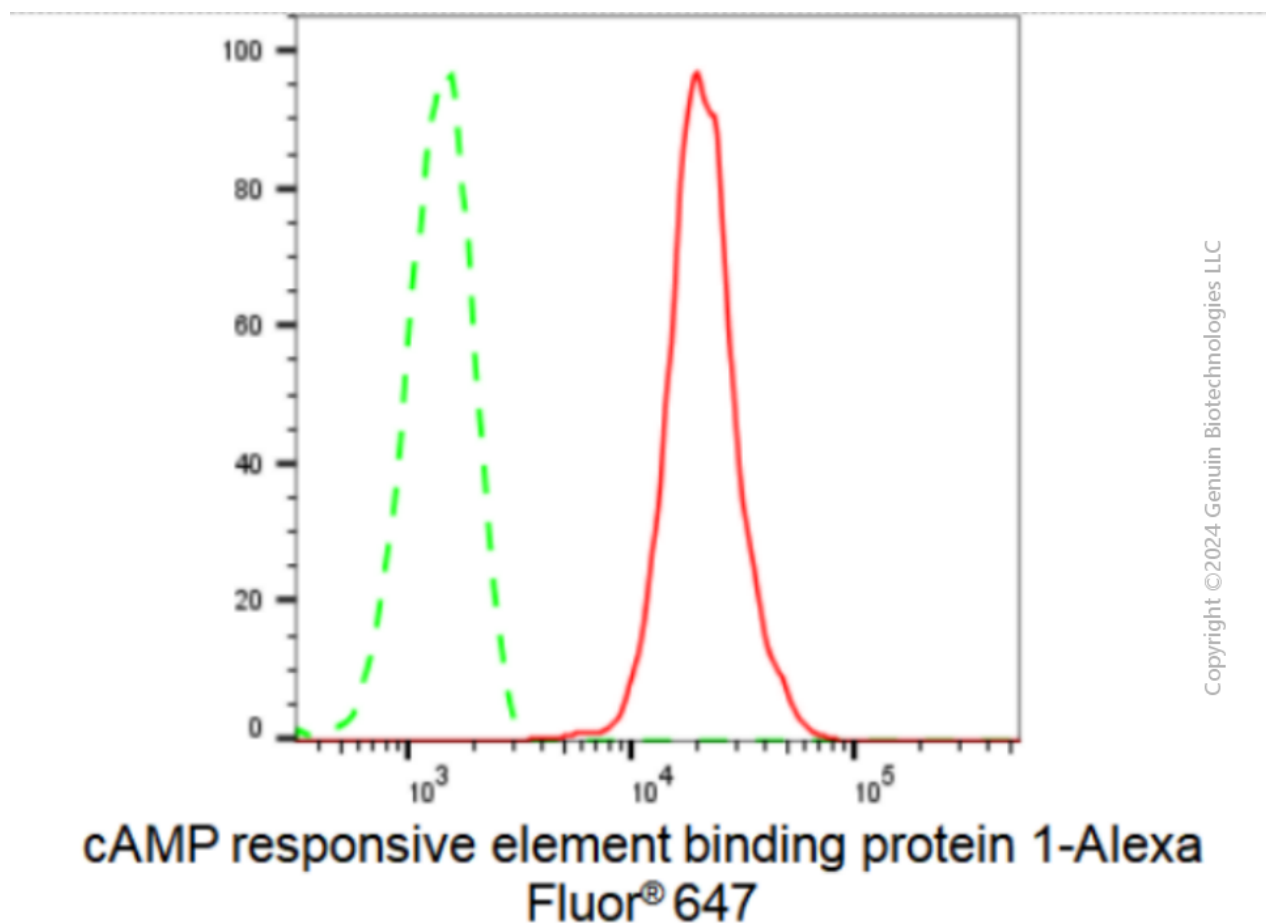
WWW.GENUINBIOTECH.COM

Anti-cAMP responsive element binding protein 1 Recombinant Rabbit Monoclonal Antibody

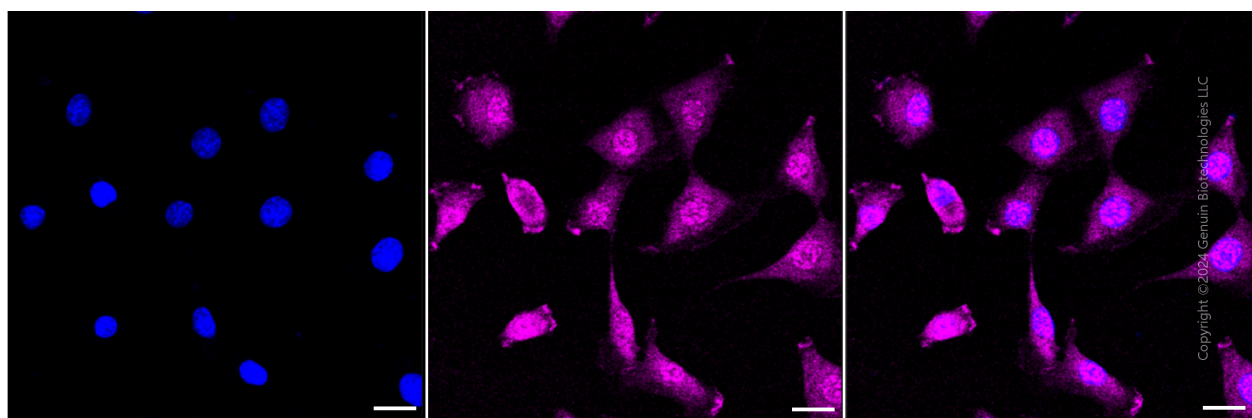
PAGE 2

Note: This product is for research use only.

Validation Data



Flow cytometric analysis of cAMP responsive element binding protein 1 expression in C2C12 cells using cAMP responsive element binding protein 1 antibody (Cat#1621, 1:2,000). Green, isotype control; red, cAMP responsive element binding protein 1.



Immunocytochemical staining of C2C12 cells with cAMP responsive element binding protein 1 antibody (Cat#1621, 1:1,000). Nuclei were stained blue with DAPI; cAMP responsive element

SUPPORT

SUPPORT@GENUINBIOTECH.COM
TEL: +1-540-855-7041

ORDERS

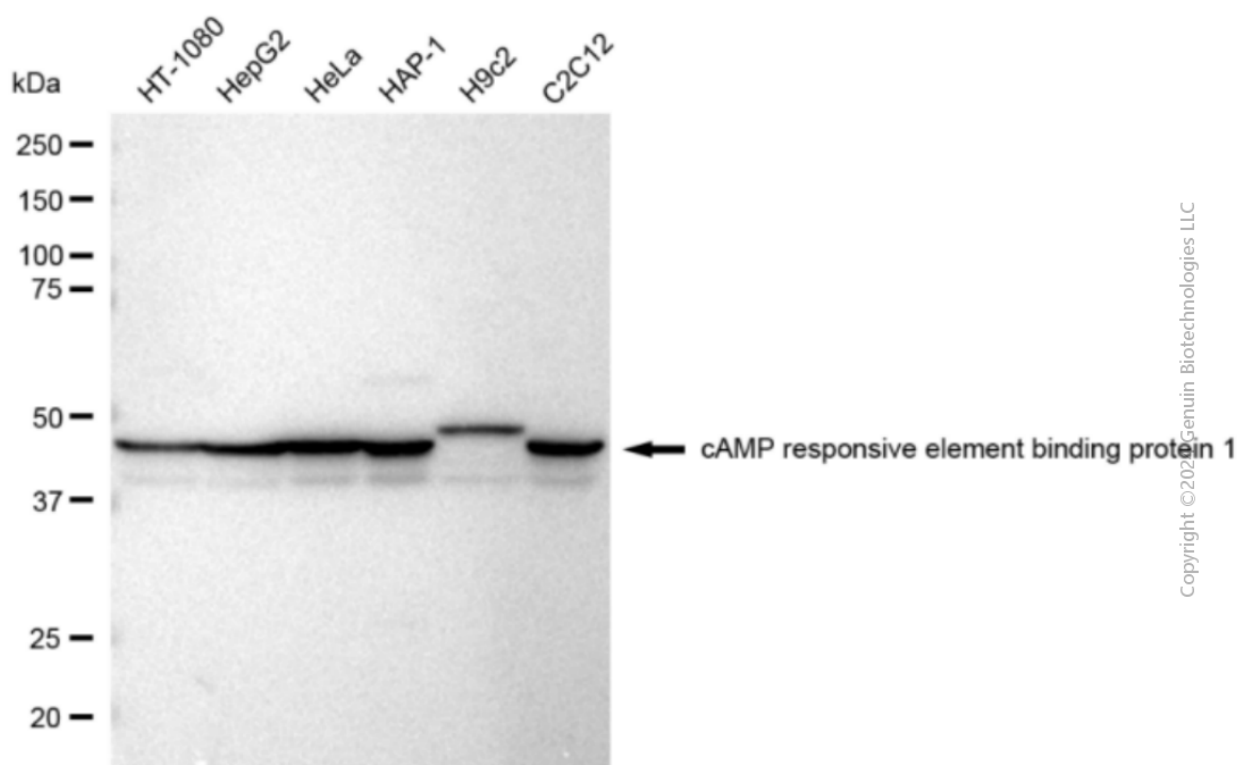
SALES@GENUINBIOTECH.COM
FAX: +1-540-855-7041

WWW.GENUINBIOTECH.COM

Anti-cAMP responsive element binding protein 1 Recombinant Rabbit Monoclonal Antibody

PAGE 3

binding protein 1 was stained magenta with Alexa Fluor® 647. Images were taken using Leica stellaris 5. Protein abundance based on laser Intensity and smart gain: Medium. Scale bar: 20 μ m.



Western blotting analysis using anti-cAMP responsive element binding protein 1 antibody (Cat#1621). Total cell lysates (30 μ g) from various cell lines were loaded and separated by SDS-PAGE. The blot was incubated with anti-cAMP responsive element binding protein 1 antibody (Cat#1621, 1:5,000) and HRP-conjugated goat anti-rabbit secondary antibody (Cat#201, 1:20,000) respectively. Image was developed using FeQ™ ECL Substrate Kit (Cat#226).

SUPPORT

SUPPORT@GENUINBIOTECH.COM
TEL: +1-540-855-7041

ORDERS

SALES@GENUINBIOTECH.COM
FAX: +1-540-855-7041

WWW.GENUINBIOTECH.COM