

# Anti-Cystathionine gamma-lyase Recombinant Rabbit Monoclonal Antibody



**Catalog #: 1626**

## Aliases

CTH; Cystathionine Gamma-Lyase; CSE; Cystathionase (Cystathionine Gamma-Lyase); Cysteine-Protein Sulphydrase; Homocysteine Desulphydrase; Cysteine Desulphydrase; Gamma-Cystathionase; EC 4.4.1.1; CGL; Homoserine Dehydratase; Homoserine Deaminase; EC 4.4.1.2; EC 4.4.1

## Background

Gene Name: CTH

NCBI Gene Entry: [1491](#)

UniProt Entry: [P32929](#)

## Application Information

Molecular Weight: Predicted, 45 kDa; observed, 42 kDa

Clonality: Rabbit monoclonal antibody

Clone ID: 23GB3805

Species Reactivity: Human

Applications Tested: Western blotting (WB), flow cytometry (FCM), immunocytochemistry (IC)

## Immunogen

A synthesized peptide derived from human Cystathionase

## Isotype

Rabbit IgG

## Storage Buffer

Supplied in PBS (pH 7.4) containing 50% glycerol, and 0.02% sodium azide.

## Storage

Store at -20 °C for one year.

## Recommended Dilutions

Western Blotting (WB): 1:1,000-1:5,000

Flow Cytometry (FCM): 1:2,000

Immunocytochemistry (IC): 1:100-1:1,000

---

### SUPPORT

SUPPORT@GENUINBIOTECH.COM  
TEL: +1-540-855-7041

### ORDERS

SALES@GENUINBIOTECH.COM  
FAX: +1-540-855-7041

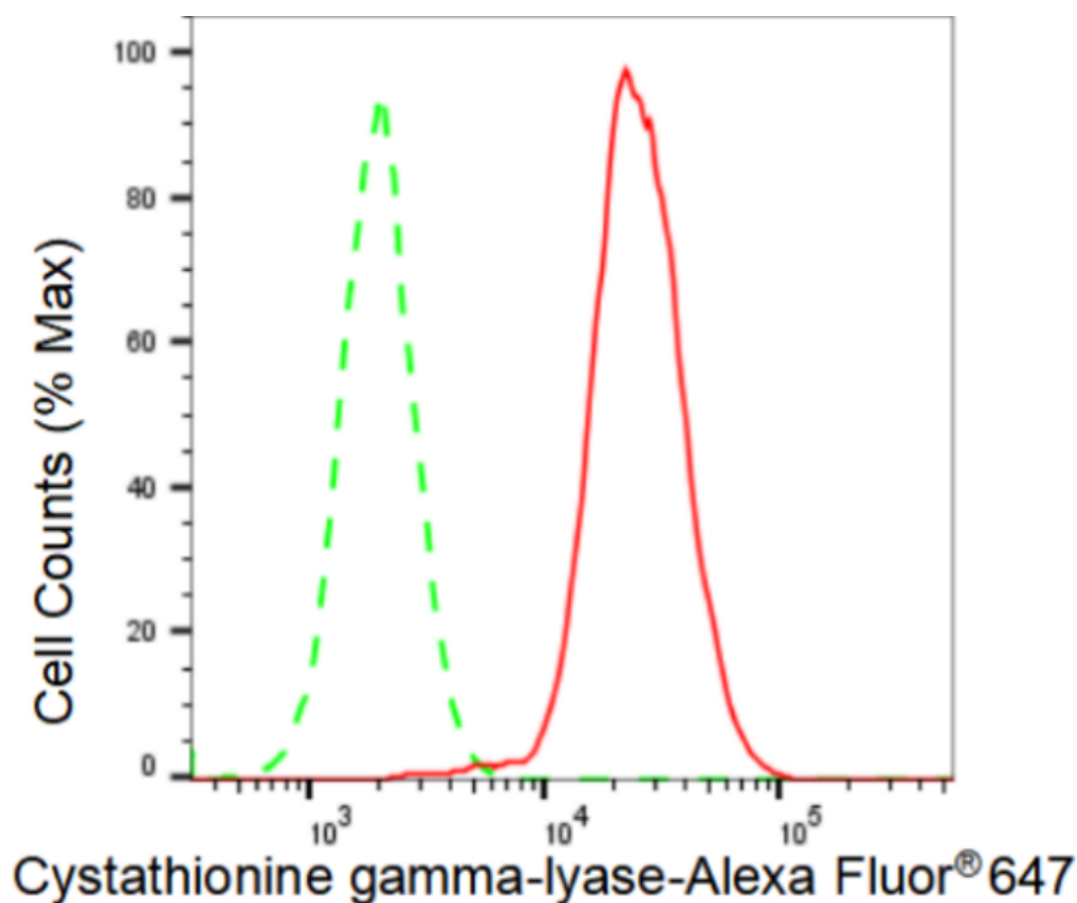
[WWW.GENUINBIOTECH.COM](http://WWW.GENUINBIOTECH.COM)

# Anti-Cystathionine gamma-lyase Recombinant Rabbit Monoclonal Antibody

PAGE 2

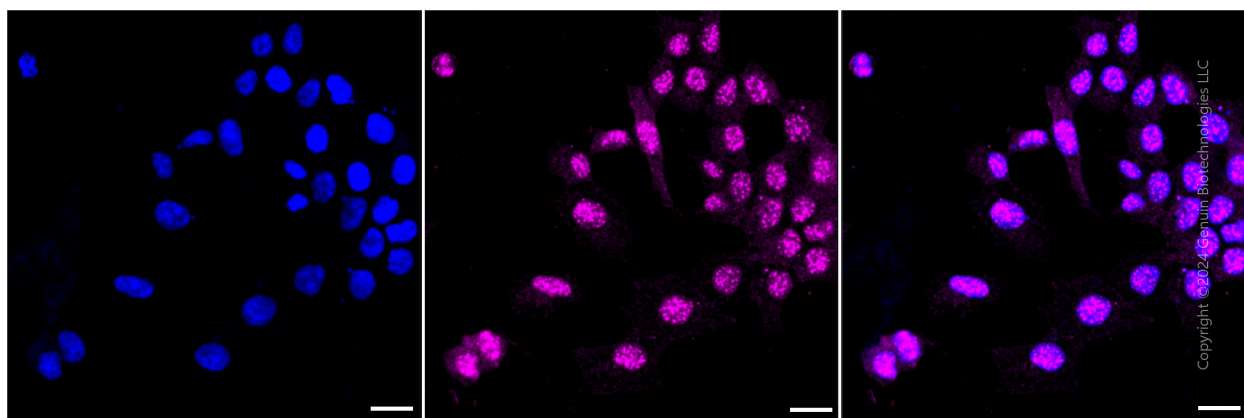
**Note:** This product is for research use only.

## Validation Data



Copyright ©2024 Genuin Biotechnologies LLC

Flow cytometric analysis of Cystathionine gamma-lyase expression in HAP-1 cells using Cystathionine gamma-lyase antibody (Cat#1626, 1:2,000). Green, isotype control; red, Cystathionine gamma-lyase.



Copyright ©2024 Genuin Biotechnologies LLC

Immunocytochemical staining of HAP-1 cells with Cystathionine gamma-lyase antibody (Cat#1626, 1:1,000). Nuclei were stained blue with DAPI; Cystathionine gamma-lyase was

### SUPPORT

SUPPORT@GENUINBIOTECH.COM  
TEL: +1-540-855-7041

### ORDERS

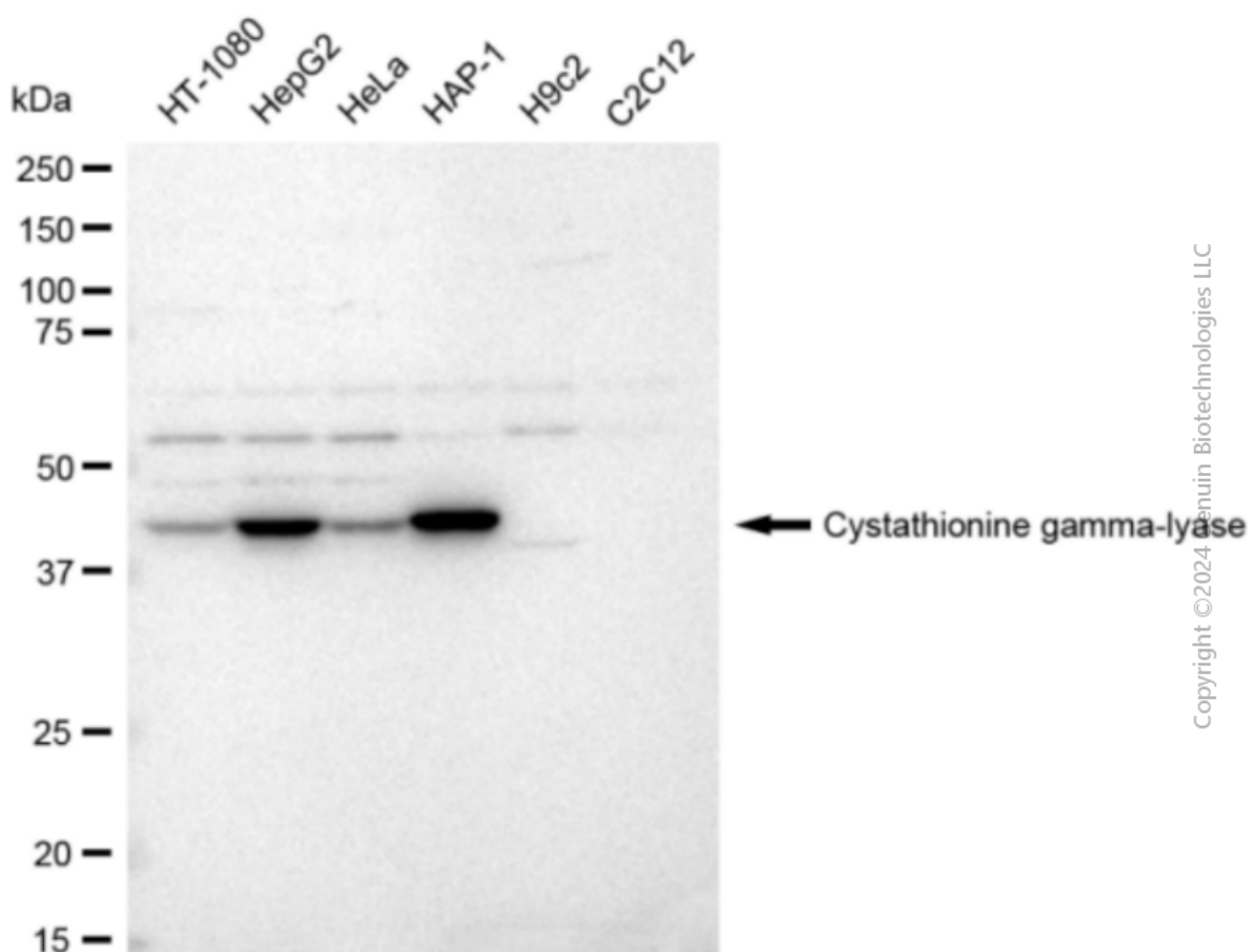
SALES@GENUINBIOTECH.COM  
FAX: +1-540-855-7041

[WWW.GENUINBIOTECH.COM](http://WWW.GENUINBIOTECH.COM)

## Anti-Cystathionine gamma-lyase Recombinant Rabbit Monoclonal Antibody

PAGE 3

stained magenta with Alexa Fluor® 647. Images were taken using Leica stellaris 5. Protein abundance based on laser Intensity and smart gain: Medium. Scale bar: 20 µm.



Western blotting analysis using anti-Cystathionine gamma-lyase antibody (Cat#1626). Total cell lysates (30 µg) from various cell lines were loaded and separated by SDS-PAGE. The blot was incubated with anti-Cystathionine gamma-lyase antibody (Cat#1626, 1:5,000) and HRP-conjugated goat anti-rabbit secondary antibody (Cat#201, 1:20,000) respectively. Image was developed using FeQ™ ECL Substrate Kit (Cat#226).

### SUPPORT

SUPPORT@GENUINBIOTECH.COM  
TEL: +1-540-855-7041

### ORDERS

SALES@GENUINBIOTECH.COM  
FAX: +1-540-855-7041

[WWW.GENUINBIOTECH.COM](http://WWW.GENUINBIOTECH.COM)