

Anti-Phospho-ACC(S79) Recombinant Rabbit Monoclonal Antibody



Catalog #: 1635

Aliases

ACACA; Acetyl-CoA Carboxylase Alpha; ACC1; ACCA; Acetyl-Coenzyme A; Carboxylase Alpha; Acetyl-CoA Carboxylase 1; ACC-Alpha; HACC1; ACAC; ACACalpha; ACCalpha; Acac1; ACC; EC 6.4.1.2; ACACALPHA; ACC-ALPHA; ACCALPHA 5; ACACAD 3; ACAC1

Background

Gene Name: ACACA

NCBI Gene Entry: 31

UniProt Entry: Q13085

Application Information

Molecular Weight: Predicted, 266 kDa; observed, 250 kDa

Clonality: Rabbit monoclonal antibody

Clone ID: 23GB3865

Species Reactivity: Human, mouse, rat

Applications Tested: Western blotting (WB), flow cytometry (FCM), immunocytochemistry (IC)

Immunogen

A synthesized peptide derived from human Phospho-ACC(S79)

Isotype

Rabbit IgG

Storage Buffer

Supplied in PBS (pH 7.4) containing 50% glycerol, and 0.02% sodium azide.

Storage

Store at -20 °C for one year.

Recommended Dilutions

Western Blotting (WB): 1:1,000-1:5,000

Flow Cytometry (FCM): 1:2,000

Immunocytochemistry (IC): 1:100-1:1,000

Note: This product is for research use only.

SUPPORT

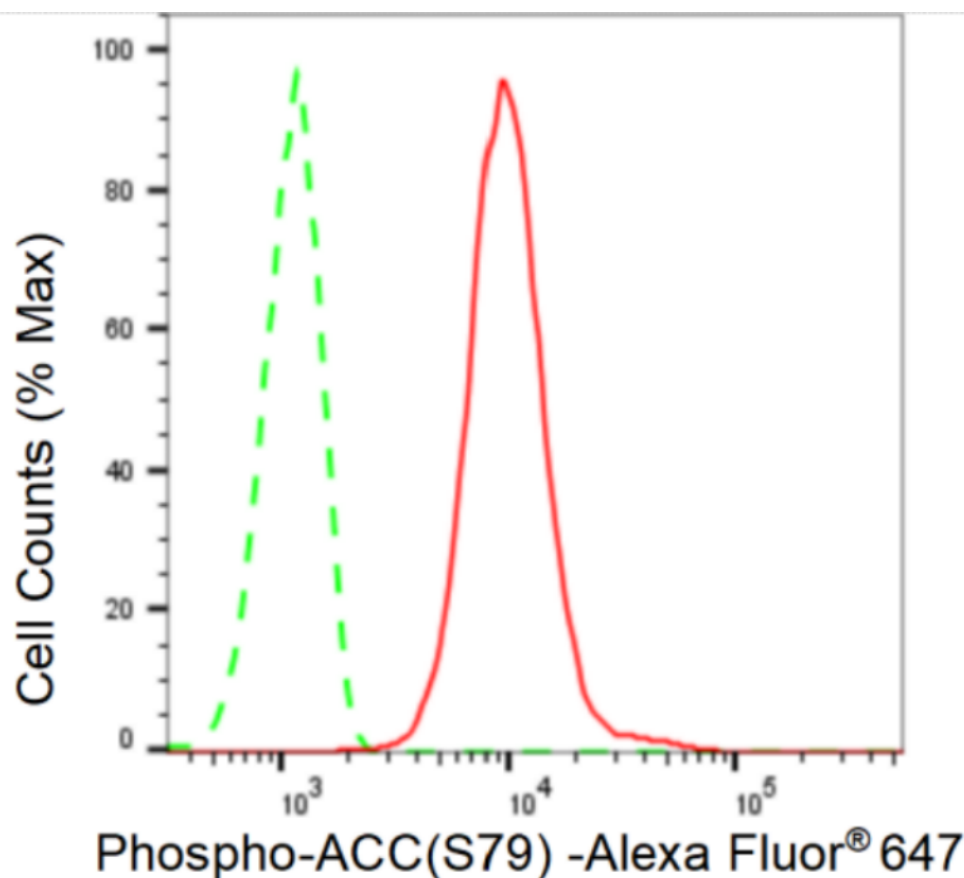
SUPPORT@GENUINBIOTECH.COM
TEL: +1-540-855-7041

ORDERS

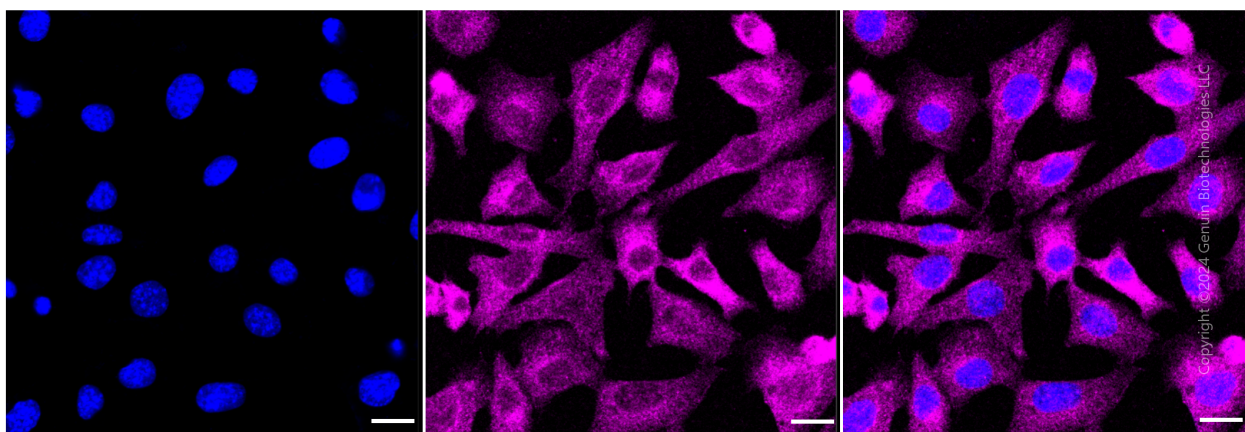
SALES@GENUINBIOTECH.COM
FAX: +1-540-855-7041

WWW.GENUINBIOTECH.COM

Validation Data



Flow cytometric analysis of Phospho-ACC(S79) expression in C2C12 cells using Phospho-ACC(S79) antibody (1635, 1:2,000). Green, isotype control; red, Phospho-ACC(S79) .



Immunocytochemical staining of C2C12 cells with anti-Phospho-ACC(S79) antibody (Cat#1635, 1:1,000). Nuclei were stained blue with DAPI; Phospho-ACC(S79) was stained magenta with Alexa Fluor® 647. Images were taken using Leica stellaris 5. Protein abundance based on laser Intensity and smart gain: Medium. Scale bar: 20 μ m.

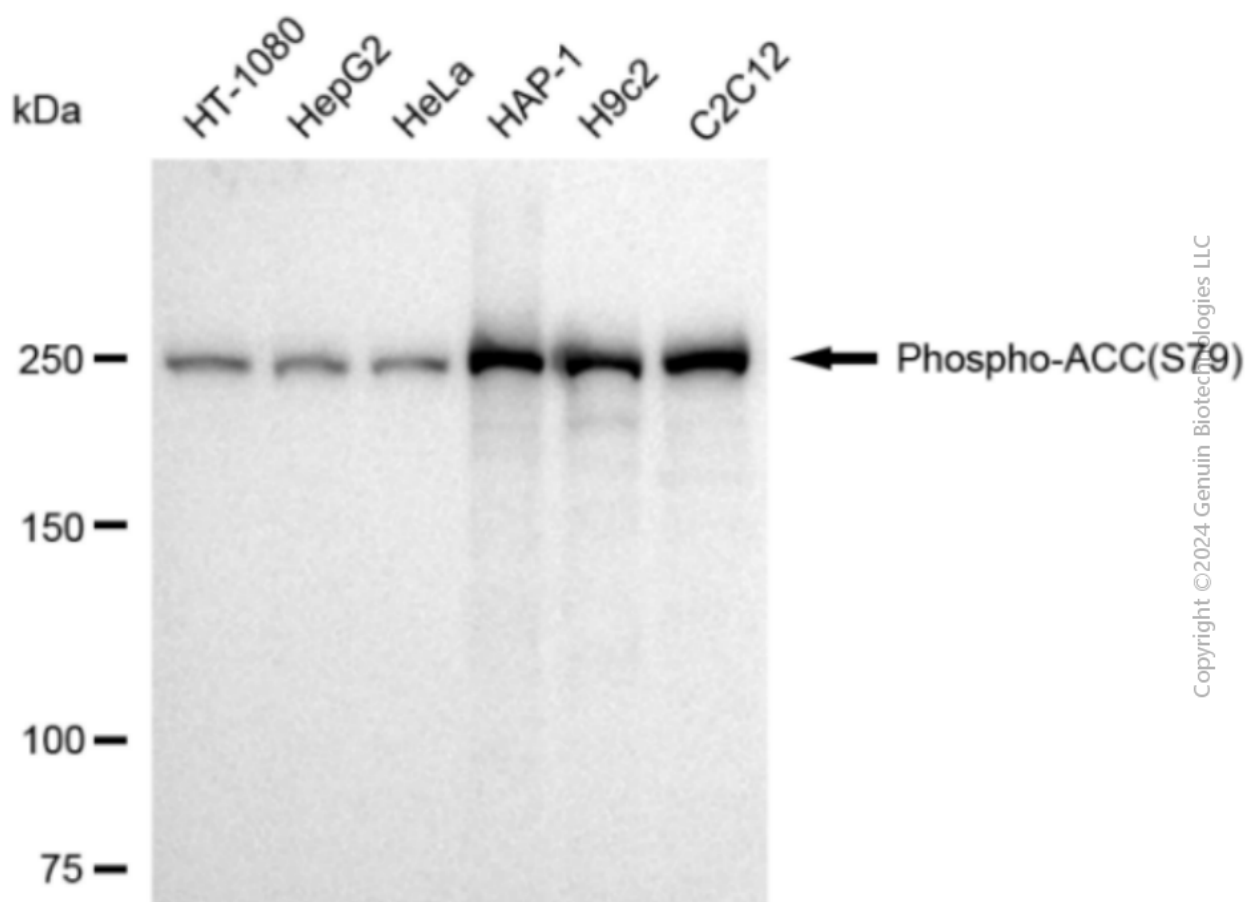
SUPPORT

SUPPORT@GENUINBIOTECH.COM
TEL: +1-540-855-7041

ORDERS

SALES@GENUINBIOTECH.COM
FAX: +1-540-855-7041

WWW.GENUINBIOTECH.COM



Copyright ©2024 Genuin Biotechnologies LLC

Western blotting analysis using anti-Phospho-ACC(S79) antibody (Cat#1635). Total cell lysates (30 µg) from various cell lines were loaded and separated by SDS-PAGE. The blot was incubated with anti-Phospho-ACC(S79) antibody (Cat#1635, 1:5,000) and HRP-conjugated goat anti-rabbit secondary antibody (Cat#201, 1:20,000) respectively. Image was developed using FeQ™ ECL Substrate Kit (Cat#226).