

Anti-Phospho-beta Catenin (T41 + S45) Recombinant Rabbit Monoclonal Antibody



Catalog #: 1637

Aliases

CTNNB1; Catenin Beta 1; CTNNB; Catenin (Cadherin-Associated Protein), Beta 1, 88kDa; Catenin Beta-1; Beta-Catenin; Armadillo; Catenin (Cadherin-Associated Protein), Beta 1 (88kD); Catenin (Cadherin-Associated Protein), Beta 1; BETA-CATENIN; ARMADILLO; NEDSDV; MRD19; EVR7

Background

Gene Name: CTNNB1

NCBI Gene Entry: [1499](#)

UniProt Entry: [P35222](#)

Application Information

Molecular Weight: Predicted, 85 kDa; observed, 92 kDa

Clonality: Rabbit monoclonal antibody

Clone ID: 23GB3875

Species Reactivity: Human, mouse, rat

Applications Tested: Western blotting (WB), flow cytometry (FCM), immunocytochemistry (IC), immunohistochemistry (IHC)

Immunogen

A synthesized peptide derived from human Phospho-beta Catenin (T41 + S45)

Isotype

Rabbit IgG

Storage Buffer

Supplied in PBS (pH 7.4) containing 50% glycerol, and 0.02% sodium azide.

Storage

Store at -20 °C for one year.

Recommended Dilutions

Western Blotting (WB): 1:1,000-1:5,000

Flow Cytometry (FCM): 1:2,000

Immunocytochemistry (IC): 1:100-1:1,000

Immunohistochemistry (IHC): 1:50-1:100

SUPPORT

SUPPORT@GENUINBIOTECH.COM
TEL: +1-540-855-7041

ORDERS

SALES@GENUINBIOTECH.COM
FAX: +1-540-855-7041

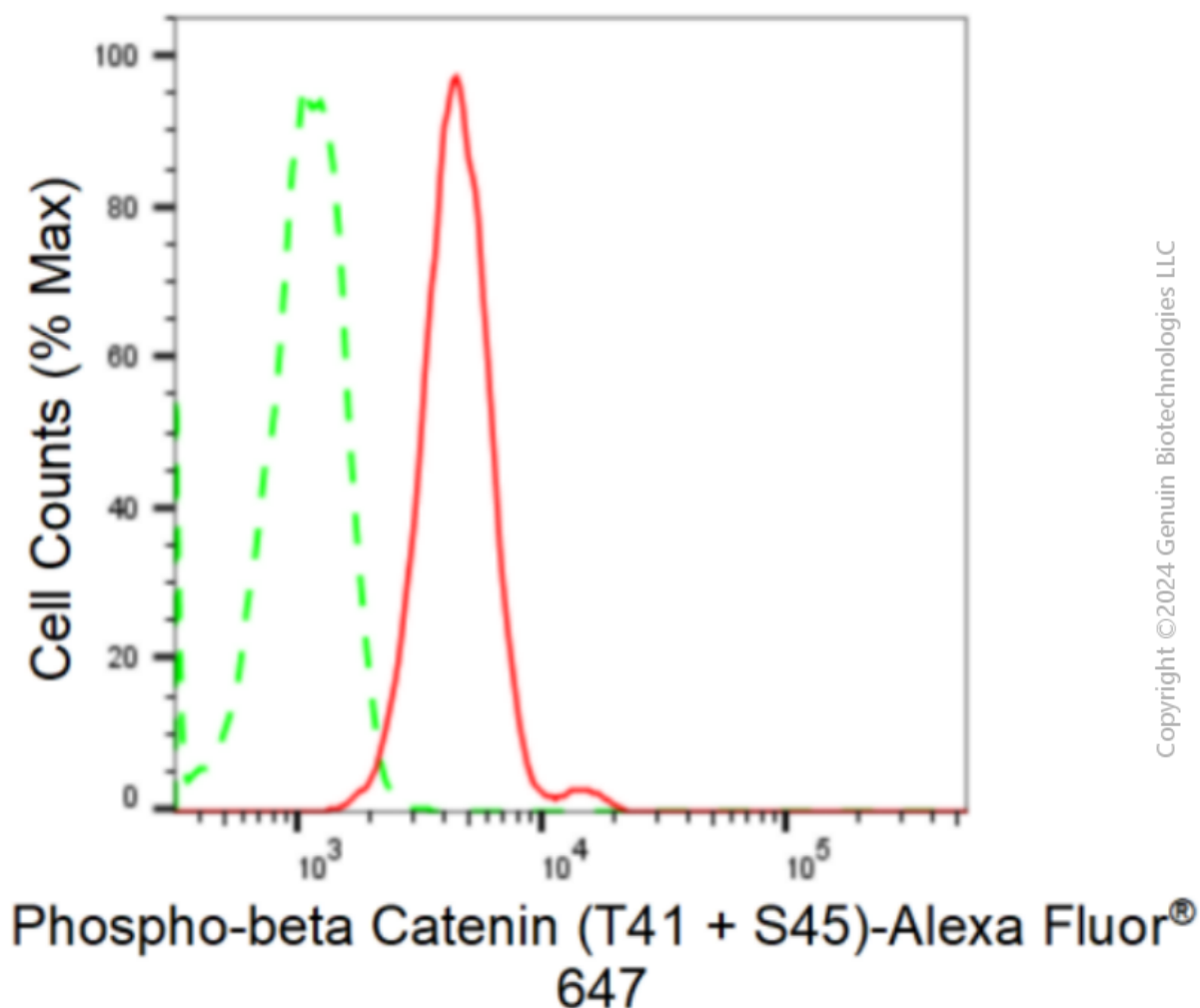
WWW.GENUINBIOTECH.COM

Anti-Phospho-beta Catenin (T41 + S45) Recombinant Rabbit Monoclonal Antibody

PAGE 2

Note: This product is for research use only.

Validation Data



Flow cytometric analysis of Phospho-beta Catenin (T41 + S45) expression in C2C12 cells using anti-Phospho-beta Catenin (T41 + S45) antibody (Cat#1637, 1:2,000). Green, isotype control; red, Phospho-beta Catenin (T41 + S45).

SUPPORT

SUPPORT@GENUINBIOTECH.COM
TEL: +1-540-855-7041

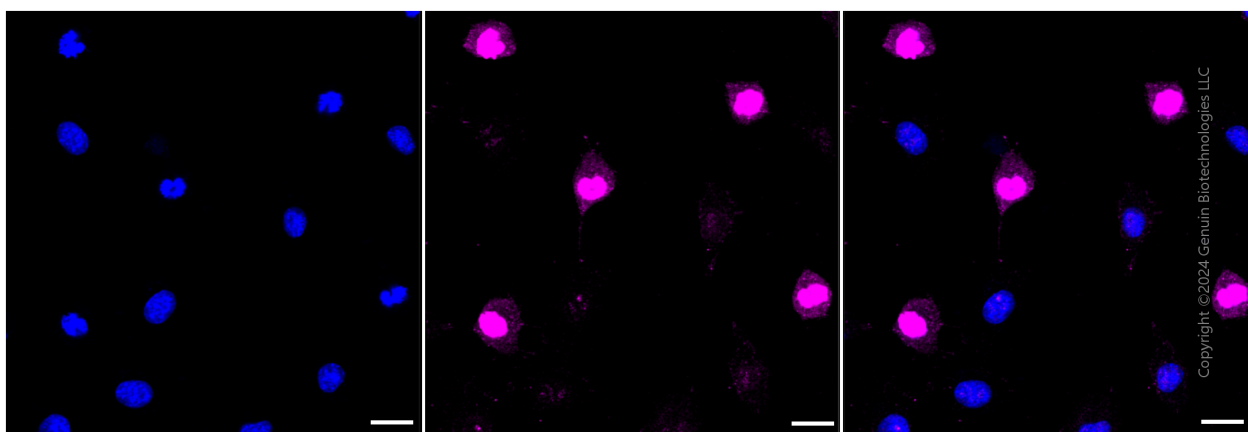
ORDERS

SALES@GENUINBIOTECH.COM
FAX: +1-540-855-7041

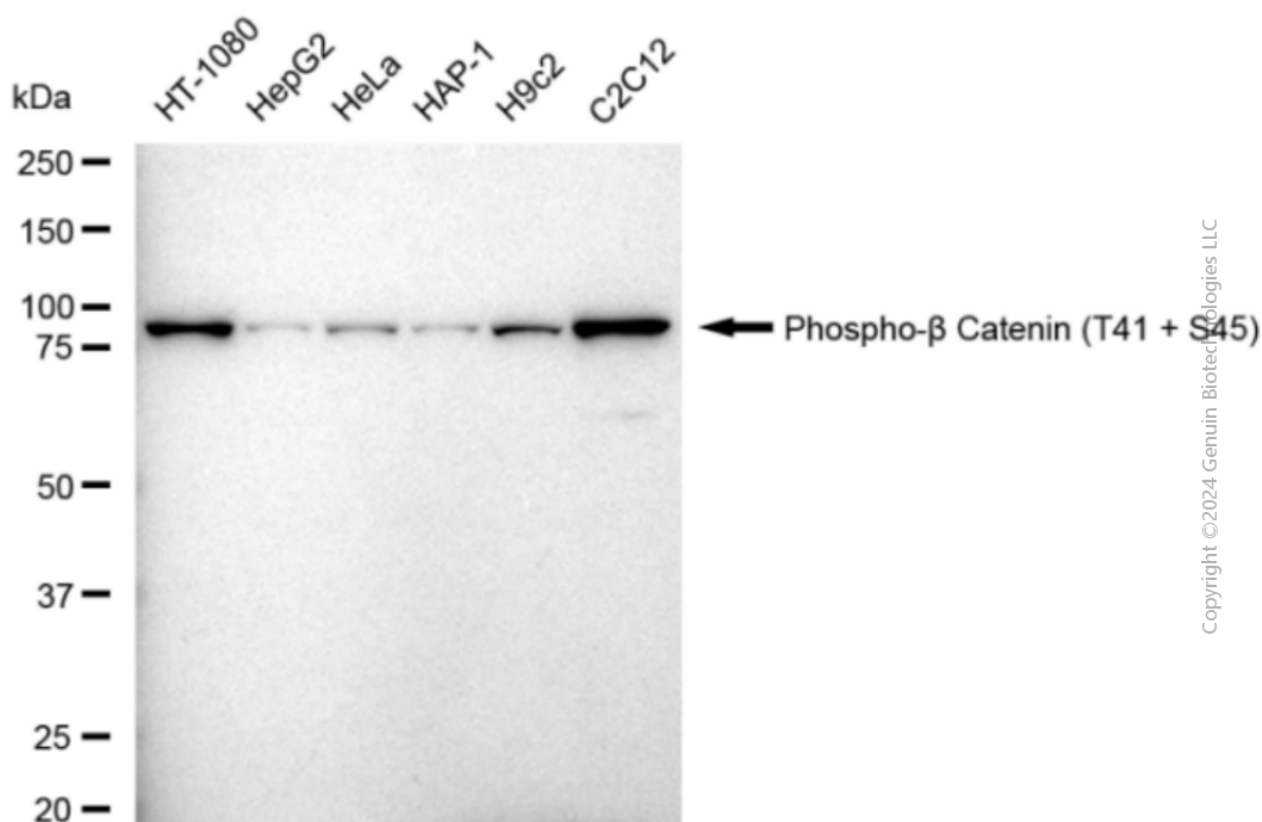
WWW.GENUINBIOTECH.COM

Anti-Phospho-beta Catenin (T41 + S45) Recombinant Rabbit Monoclonal Antibody

PAGE 3



Immunocytochemical staining of C2C12 cells with anti-Phospho-beta Catenin (T41 + S45) antibody (Cat#1637, 1:1,000). Nuclei were stained blue with DAPI; Phospho-beta Catenin (T41 + S45) was stained magenta with Alexa Fluor® 647. Images were taken using Leica stellaris 5. Protein abundance based on laser Intensity and smart gain: High. Scale bar: 20 μ m.



Western blotting analysis using anti-Phospho-beta Catenin (T41 + S45) antibody (Cat#1637). Total cell lysates (30 μ g) from various cell lines were loaded and separated by SDS-PAGE. The blot was incubated with anti-Phospho-beta Catenin (T41 + S45) antibody (Cat#1637, 1:5,000) and HRP-conjugated goat anti-rabbit secondary antibody (Cat#201, 1:20,000) respectively. Image was developed using FeQ™ ECL Substrate Kit (Cat#226).

SUPPORT

SUPPORT@GENUINBIOTECH.COM
TEL: +1-540-855-7041

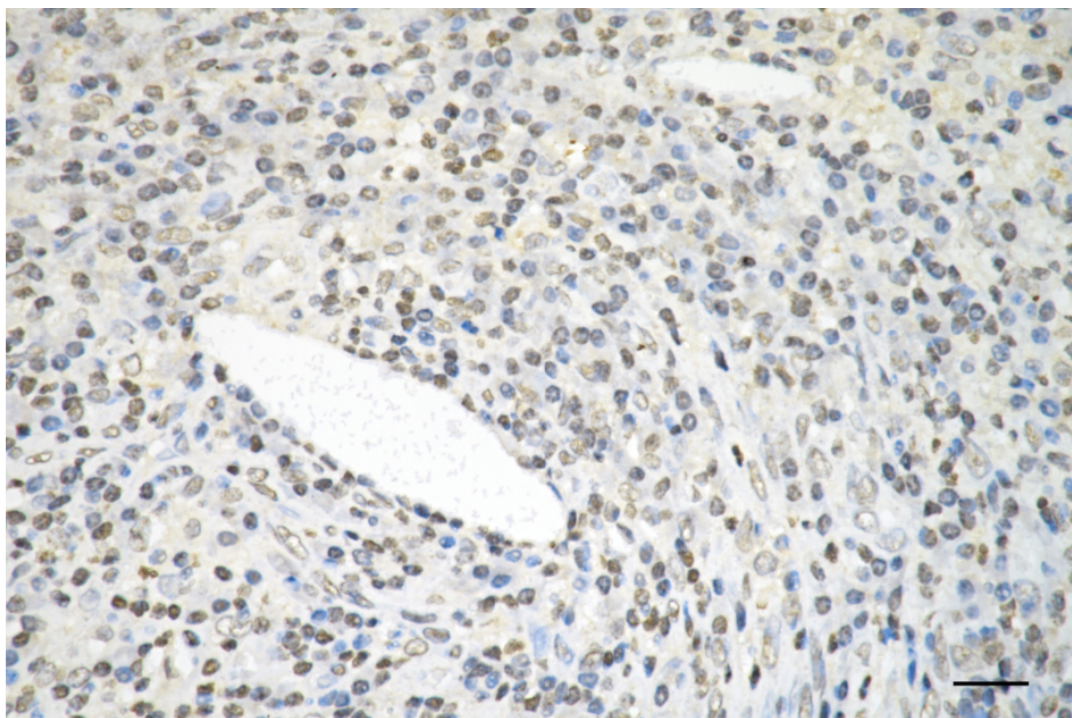
ORDERS

SALES@GENUINBIOTECH.COM
FAX: +1-540-855-7041

WWW.GENUINBIOTECH.COM

Anti-Phospho-beta Catenin (T41 + S45) Recombinant Rabbit Monoclonal Antibody

PAGE 4



Copyright ©2025 Genuin Biotechnologies LLC

Immunohistochemistry was performed on paraffin-embedded human sigmoid colon carcinoma using anti-phospho-beta catenin (T41+S45) antibody (Cat#1637, 1:100). Antigen retrieval was done in sodium citrate buffer (pH 6.0). DAB was used for detection, with hematoxylin counterstaining. Images were acquired using a Nikon Ci-L Plus microscope (40× objective). Scale bar: 25 μ m.

SUPPORT

SUPPORT@GENUINBIOTECH.COM
TEL: +1-540-855-7041

ORDERS

SALES@GENUINBIOTECH.COM
FAX: +1-540-855-7041

WWW.GENUINBIOTECH.COM