

Anti-Phospho-CTNND1 (Y228) Recombinant Rabbit Monoclonal Antibody



Catalog #: 1638

Aliases

CTNND1; Catenin Delta 1; KIAA0384; P120; Catenin (Cadherin-Associated Protein), Delta 1; Cadherin-Associated Src Substrate; Catenin Delta-1; P120 Catenin; P120CAS; P120CTN; CTNND; CAS; P120(CAS); P120(CTN); P120(Ctn); P120(Cas); P120cas; P120ctn; BCDS2

Background

Gene Name: CTNND1

NCBI Gene Entry: [1500](#)

UniProt Entry: [O60716](#)

Application Information

Molecular Weight: Predicted, 108 kDa; observed, 90,115 kDa

Clonality: Rabbit monoclonal antibody

Clone ID: 23GB3880

Species Reactivity: Human, mouse, rat

Applications Tested: Western blotting (WB), flow cytometry (FCM), immunocytochemistry (IC)

Immunogen

A synthesized peptide derived from human Phospho-CTNND1 (Y228)

Isotype

Rabbit IgG

Storage Buffer

Supplied in PBS (pH 7.4) containing 50% glycerol, and 0.02% sodium azide.

Storage

Store at -20 °C for one year.

Recommended Dilutions

Western Blotting (WB): 1:1,000-1:5,000

Flow Cytometry (FCM): 1:2,000

Immunocytochemistry (IC): 1:100-1:1,000

Note: This product is for research use only.

SUPPORT

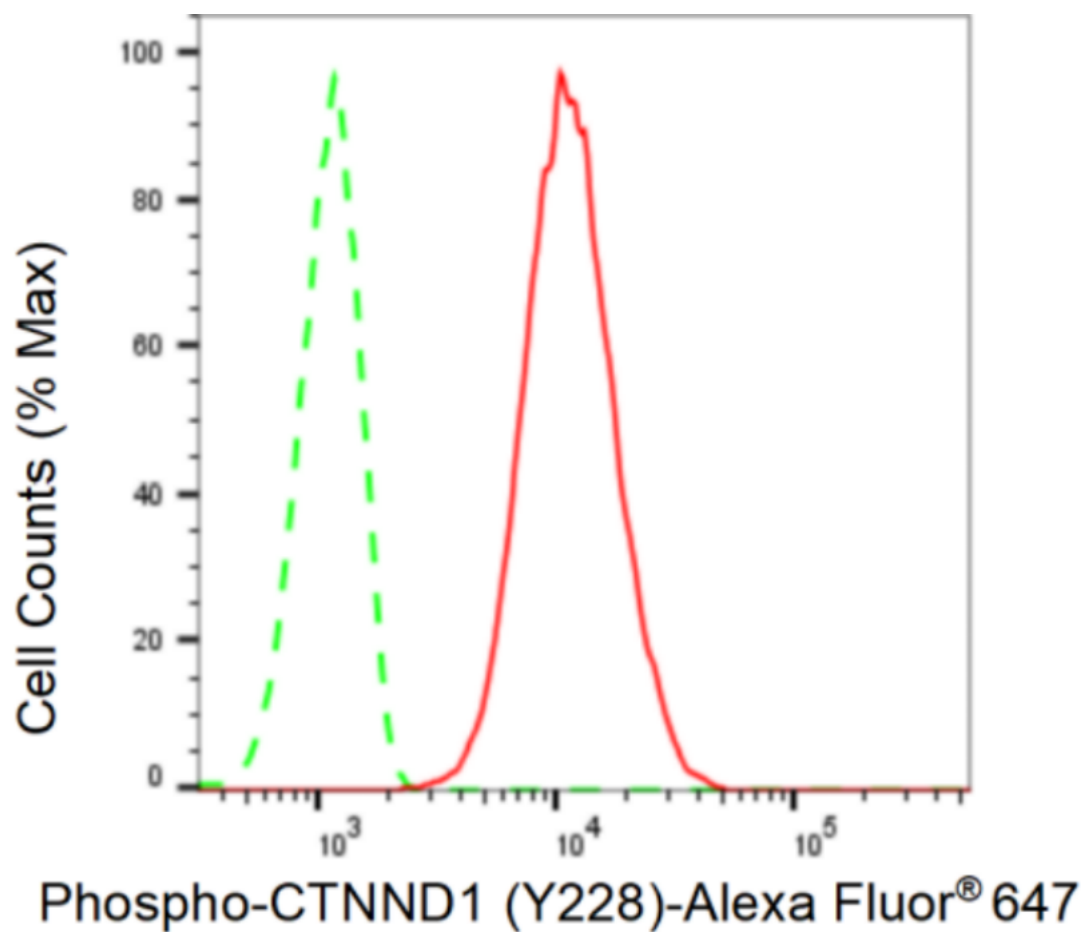
SUPPORT@GENUINBIOTECH.COM
TEL: +1-540-855-7041

ORDERS

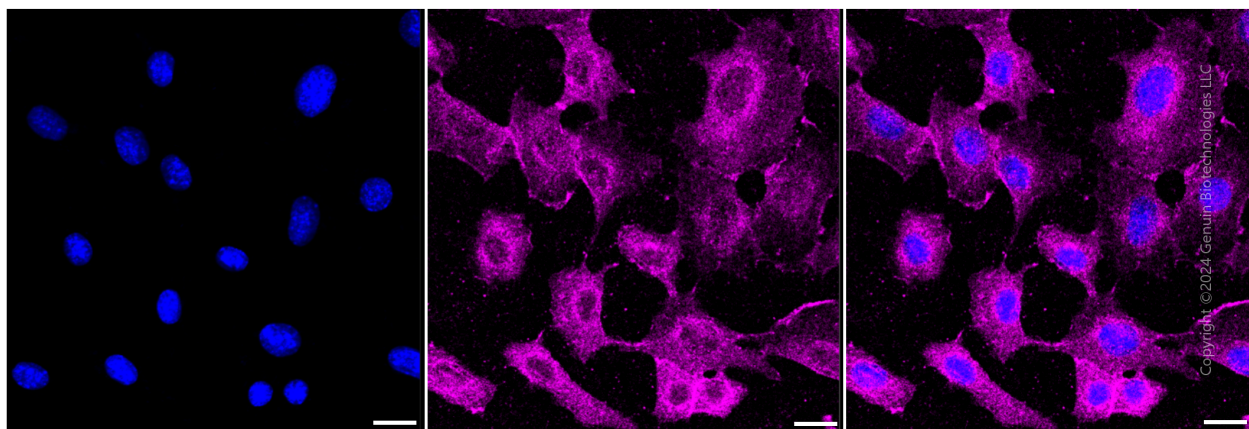
SALES@GENUINBIOTECH.COM
FAX: +1-540-855-7041

WWW.GENUINBIOTECH.COM

Validation Data



Flow cytometric analysis of Phospho-CTNND1 (Y228) expression in C2C12 cells using Phospho-CTNND1 (Y228) antibody (Cat#1638, 1:2,000). Green, isotype control; red, Phospho-CTNND1 (Y228).

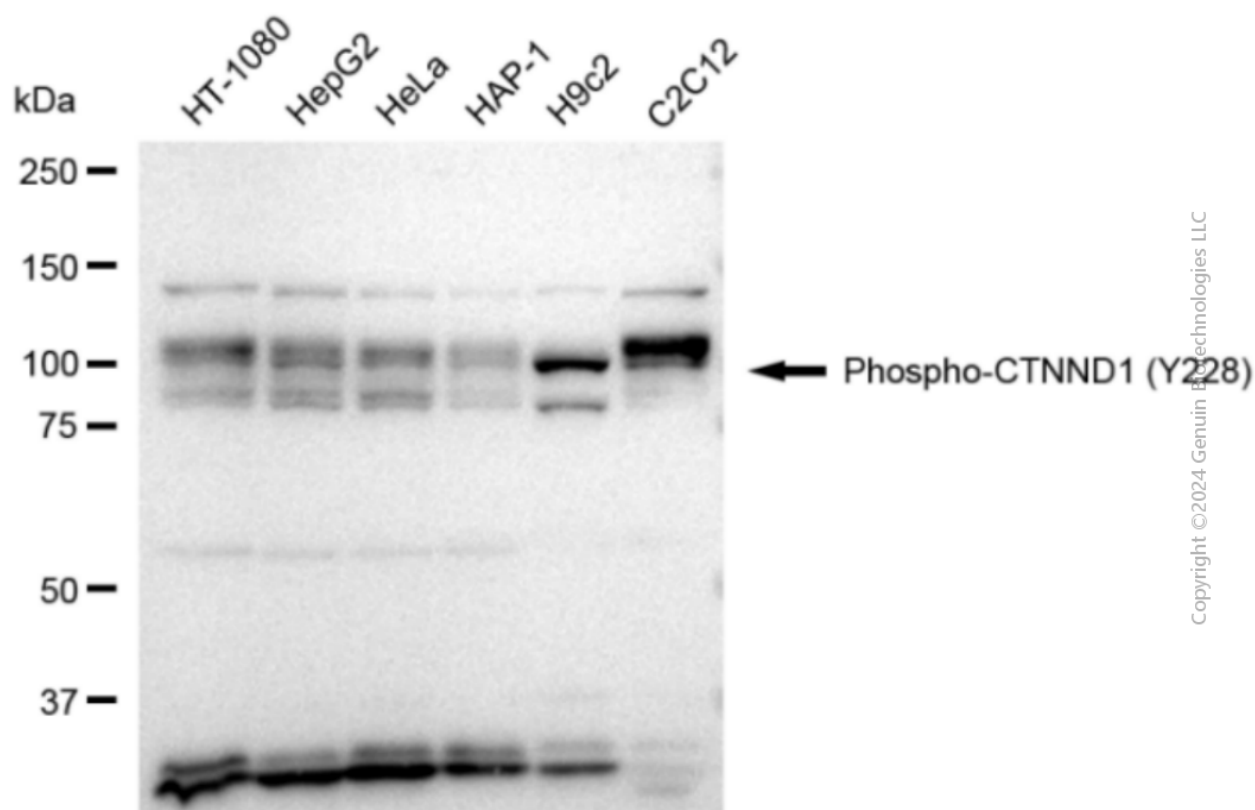


Immunocytochemical staining of C2C12 cells with anti-Phospho-CTNND1 (Y228) antibody (Cat#1638, 1:1,000). Nuclei were stained blue with DAPI; Phospho-CTNND1 (Y228) was stained

Anti-Phospho-CTNND1 (Y228) Recombinant Rabbit Monoclonal Antibody

PAGE 3

magenta with Alexa Fluor® 647. Images were taken using Leica stellaris 5. Protein abundance based on laser Intensity and smart gain: Medium. Scale bar: 20 μ m.



Western blotting analysis using anti-Phospho-CTNND1 (Y228) antibody (Cat#1638). Total cell lysates (30 μ g) from various cell lines were loaded and separated by SDS-PAGE. The blot was incubated with anti-Phospho-CTNND1 (Y228) antibody (Cat#1638, 1:5,000) and HRP-conjugated goat anti-rabbit secondary antibody (Cat#201, 1:20,000) respectively. Image was developed using FeQ™ ECL Substrate Kit (Cat#226).

SUPPORT

SUPPORT@GENUINBIOTECH.COM
TEL: +1-540-855-7041

ORDERS

SALES@GENUINBIOTECH.COM
FAX: +1-540-855-7041

WWW.GENUINBIOTECH.COM