

Anti-A-kinase anchoring protein 14 Recombinant Rabbit Monoclonal Antibody



Catalog #: 1652

Aliases

AKAP14; A-Kinase Anchoring Protein 14; AKAP28; Protein Kinase A-Anchoring Protein 14; A Kinase (PRKA) Anchor Protein 14; A-Kinase Anchor Protein 28 KDa; A-Kinase Anchor Protein 14; AKAP 28; AKAP-14; PRKA14; A-Kinase Anchoring Protein 28

Background

Gene Name: AKAP14

NCBI Gene Entry: [158798](#)

UniProt Entry: [Q86UN6](#)

Application Information

Molecular Weight: Predicted, 23 kDa; observed, 23 kDa

Clonality: Rabbit monoclonal antibody

Clone ID: 23GB3935

Species Reactivity: Human, mouse, rat

Applications Tested: Western blotting (WB), flow cytometry (FCM), immunocytochemistry (IC)

Immunogen

A synthesized peptide derived from human AKAP14

Isotype

Rabbit IgG

Storage Buffer

Supplied in PBS (pH 7.4) containing 50% glycerol, and 0.02% sodium azide.

Storage

Store at -20 °C for one year.

Recommended Dilutions

Western Blotting (WB): 1:1,000-1:5,000

Flow Cytometry (FCM): 1:2,000

Immunocytochemistry (IC): 1:100-1:1,000

Note: This product is for research use only.

SUPPORT

SUPPORT@GENUINBIOTECH.COM
TEL: +1-540-855-7041

ORDERS

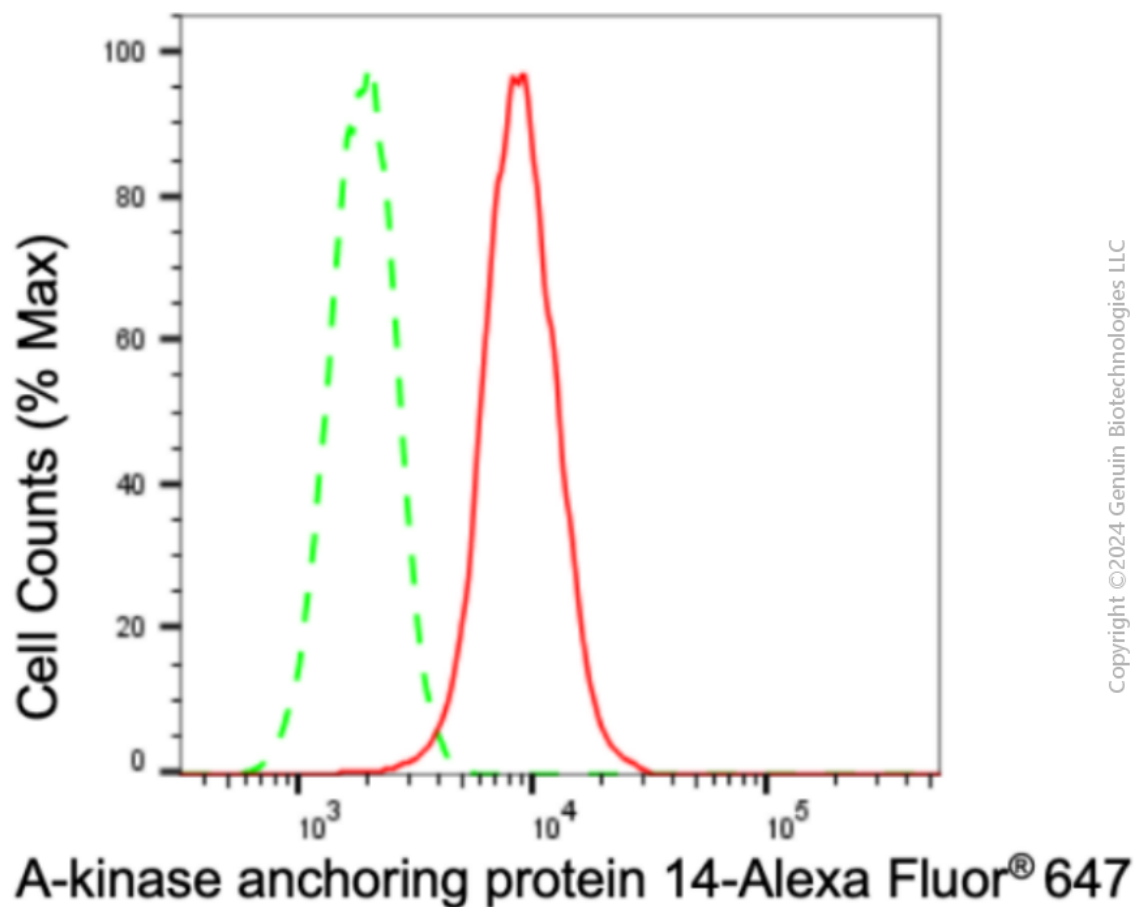
SALES@GENUINBIOTECH.COM
FAX: +1-540-855-7041

WWW.GENUINBIOTECH.COM

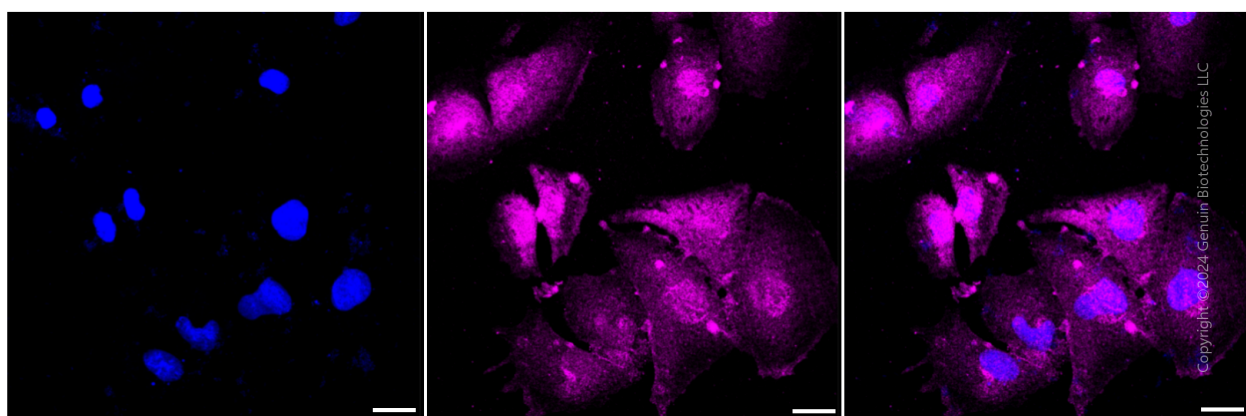
Anti-A-kinase anchoring protein 14 Recombinant Rabbit Monoclonal Antibody

PAGE 2

Validation Data



Flow cytometric analysis of A-kinase anchoring protein 14 expression in H9c2 cells using A-kinase anchoring protein 14 antibody (Cat#1652, 1:2,000). Green, isotype control; red, A-kinase anchoring protein 14.



Immunocytochemical staining of H9C2 cells with A-kinase anchoring protein 14 antibody (Cat#1652, 1:1,000). Nuclei were stained blue with DAPI; A-kinase anchoring protein 14 was stained magenta with Alexa Fluor® 647. Images were taken using Leica stellaris 5. Protein

SUPPORT

SUPPORT@GENUINBIOTECH.COM
TEL: +1-540-855-7041

ORDERS

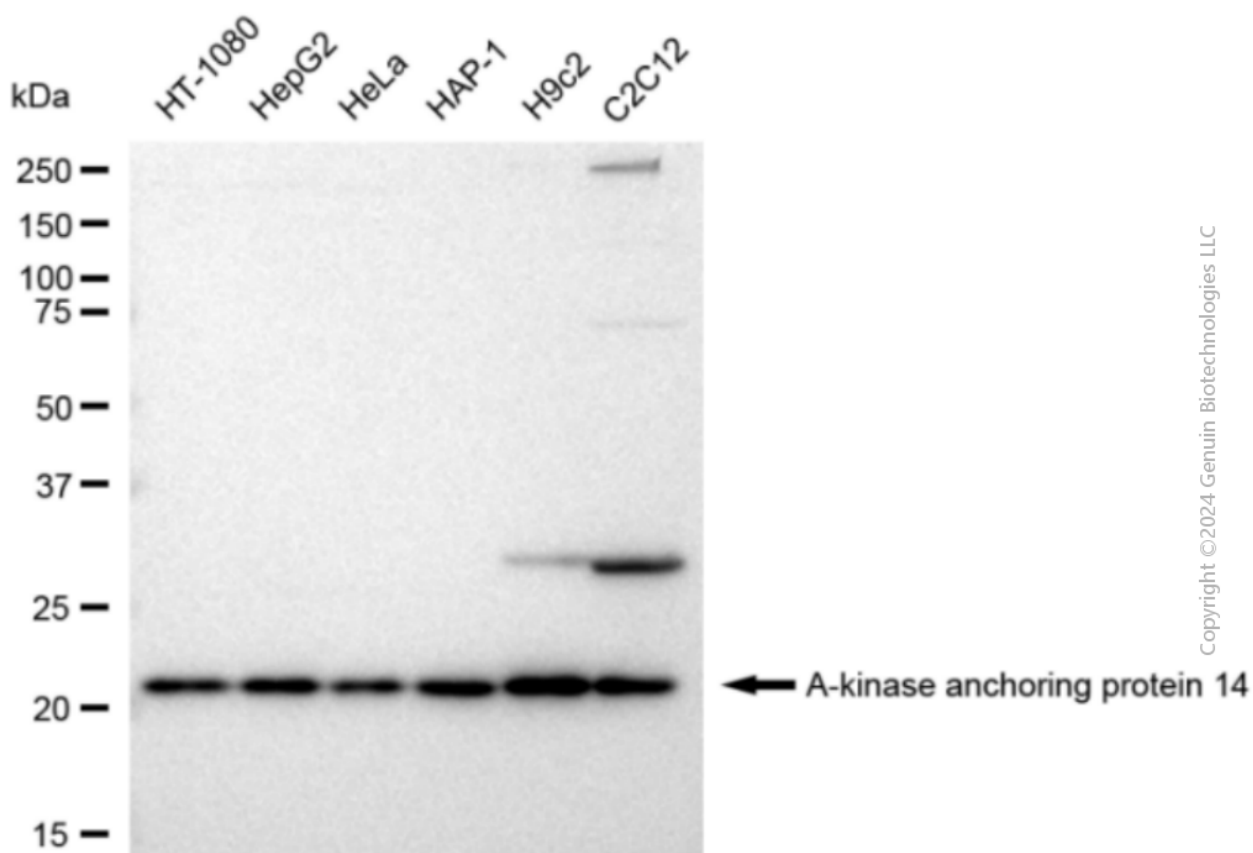
SALES@GENUINBIOTECH.COM
FAX: +1-540-855-7041

WWW.GENUINBIOTECH.COM

Anti-A-kinase anchoring protein 14 Recombinant Rabbit Monoclonal Antibody

PAGE 3

abundance based on laser Intensity and smart gain: Medium. Scale bar: 20 μ m.



Western blotting analysis using anti-A-kinase anchoring protein 14 antibody (Cat#1652). Total cell lysates (30 μ g) from various cell lines were loaded and separated by SDS-PAGE. The blot was incubated with anti-A-kinase anchoring protein 14 antibody (Cat#1652, 1:5,000) and HRP-conjugated goat anti-rabbit secondary antibody (Cat#201, 1:20,000) respectively. Image was developed using FeQ™ ECL Substrate Kit (Cat#226).

SUPPORT

SUPPORT@GENUINBIOTECH.COM
TEL: +1-540-855-7041

ORDERS

SALES@GENUINBIOTECH.COM
FAX: +1-540-855-7041

WWW.GENUINBIOTECH.COM