

Anti-FLAP Recombinant Rabbit Monoclonal Antibody



Catalog #: 1653

Aliases

ALOX5AP; Arachidonate 5-Lipoxygenase Activating Protein; FLAP; Arachidonate 5-Lipoxygenase-Activating Protein; MK-886-Binding Protein; Five-Lipoxygenase Activating Protein

Background

Gene Name: ALOX5AP

NCBI Gene Entry: [241](#)

UniProt Entry: [P20292](#)

Application Information

Molecular Weight: Predicted, 18 kDa; observed, 16 kDa

Clonality: Rabbit monoclonal antibody

Clone ID: 23GB3940

Species Reactivity: Human

Applications Tested: Western blotting (WB), flow cytometry (FCM), immunocytochemistry (IC)

Immunogen

A synthesized peptide derived from human FLAP

Isotype

Rabbit IgG

Storage Buffer

Supplied in PBS (pH 7.4) containing 50% glycerol, and 0.02% sodium azide.

Storage

Store at -20 °C for one year.

Recommended Dilutions

Western Blotting (WB): 1:1,000-1:5,000

Flow Cytometry (FCM): 1:2,000

Immunocytochemistry (IC): 1:100-1:1,000

Note: This product is for research use only.

SUPPORT

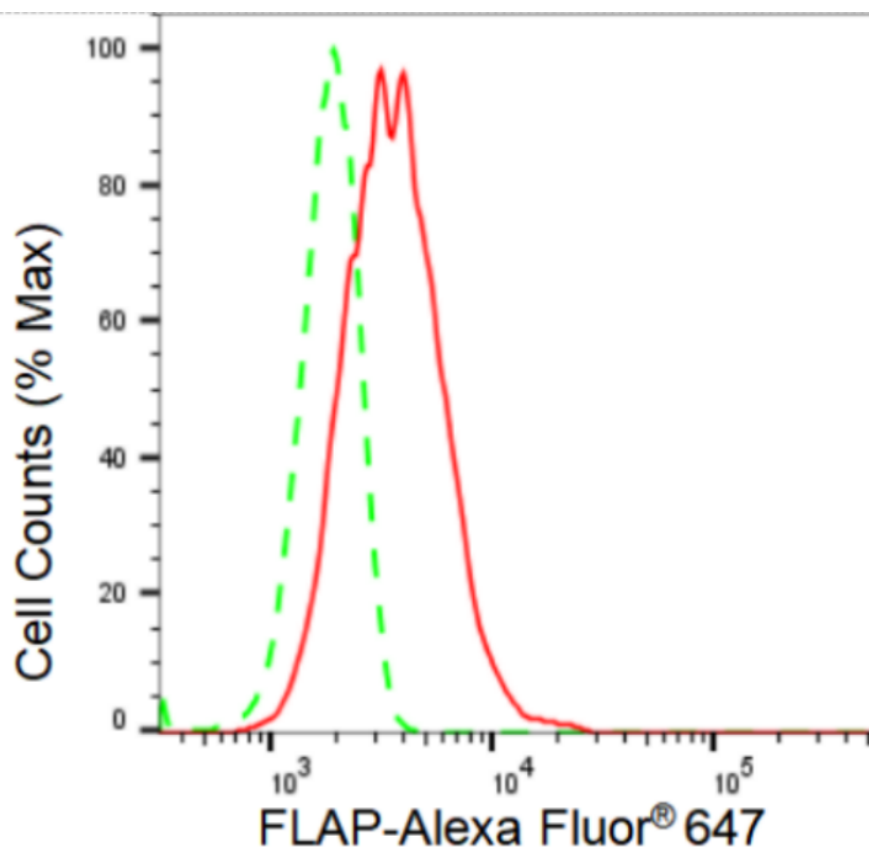
SUPPORT@GENUINBIOTECH.COM
TEL: +1-540-855-7041

ORDERS

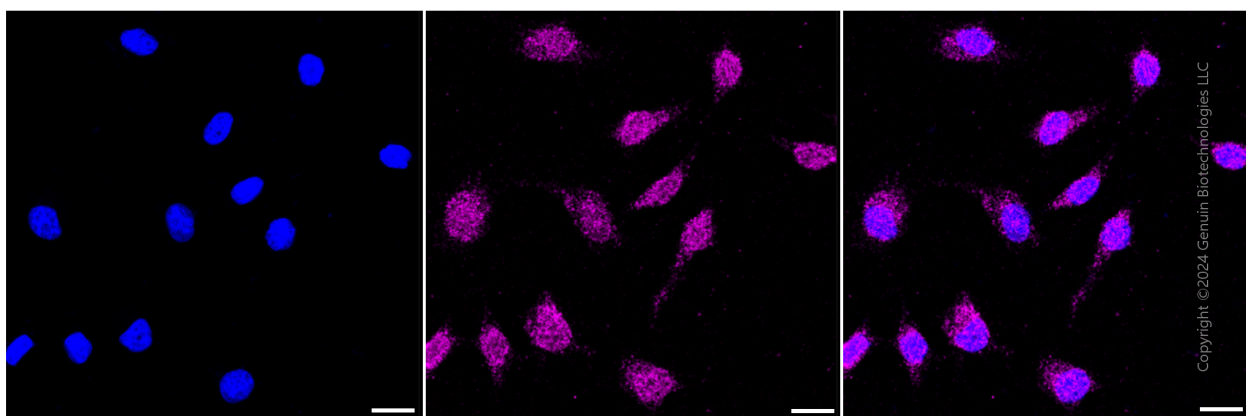
SALES@GENUINBIOTECH.COM
FAX: +1-540-855-7041

WWW.GENUINBIOTECH.COM

Validation Data



Flow cytometric analysis of FLAP expression in HeLa cells using FLAP antibody (Cat#1653, 1:2,000). Green, isotype control; red, FLAP.



Immunocytochemical staining of HeLa cells with FLAP antibody (Cat#1653, 1:1,000). Nuclei were stained blue with DAPI; FLAP was stained magenta with Alexa Fluor® 647. Images were taken using Leica stellaris 5. Protein abundance based on laser Intensity and smart gain: Low. Scale bar: 20 μ m.

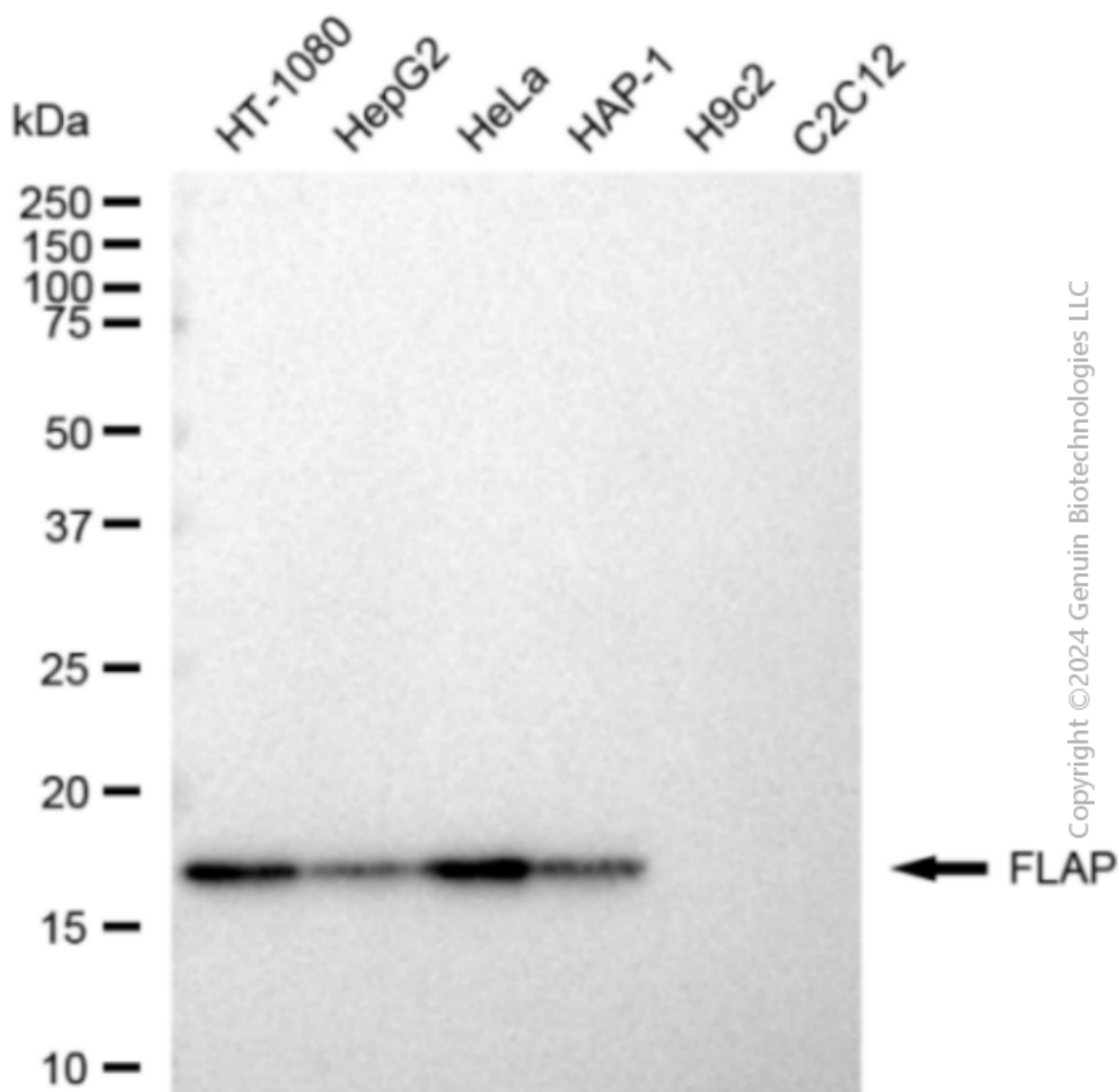
SUPPORT

SUPPORT@GENUINBIOTECH.COM
TEL: +1-540-855-7041

ORDERS

SALES@GENUINBIOTECH.COM
FAX: +1-540-855-7041

WWW.GENUINBIOTECH.COM



Western blotting analysis using anti-FLAP antibody (Cat#1653). Total cell lysates (30 μ g) from various cell lines were loaded and separated by SDS-PAGE. The blot was incubated with anti-FLAP antibody (Cat#1653, 1:5,000) and HRP-conjugated goat anti-rabbit secondary antibody (Cat#201, 1:20,000) respectively. Image was developed using FeQ™ ECL Substrate Kit (Cat#226).