

# Anti-ATR interacting protein Recombinant Rabbit Monoclonal Antibody



**Catalog #: 1655**

## Aliases

ATRIP; ATR Interacting Protein; ATM And Rad3-Related-Interacting Protein; ATR-Interacting Protein; FLJ12343; MGC20625; MGC21482; MGC26740; AGS1

## Background

Gene Name: ATRIP

NCBI Gene Entry: [84126](#)

UniProt Entry: [Q8WXE1](#)

## Application Information

Molecular Weight: Predicted, 86 kDa; observed, 86 kDa

Clonality: Rabbit monoclonal antibody

Clone ID: 23GB3950

Species Reactivity: Human, mouse, rat

Applications Tested: Western blotting (WB), flow cytometry (FCM), immunocytochemistry (IC)

## Immunogen

A synthesized peptide derived from human ATRIP

## Isotype

Rabbit IgG

## Storage Buffer

Supplied in PBS (pH 7.4) containing 50% glycerol, and 0.02% sodium azide.

## Storage

Store at -20 °C for one year.

## Recommended Dilutions

Western Blotting (WB): 1:1,000-1:5,000

Flow Cytometry (FCM): 1:2,000

Immunocytochemistry (IC): 1:100-1:1,000

**Note:** This product is for research use only.

## Validation Data

---

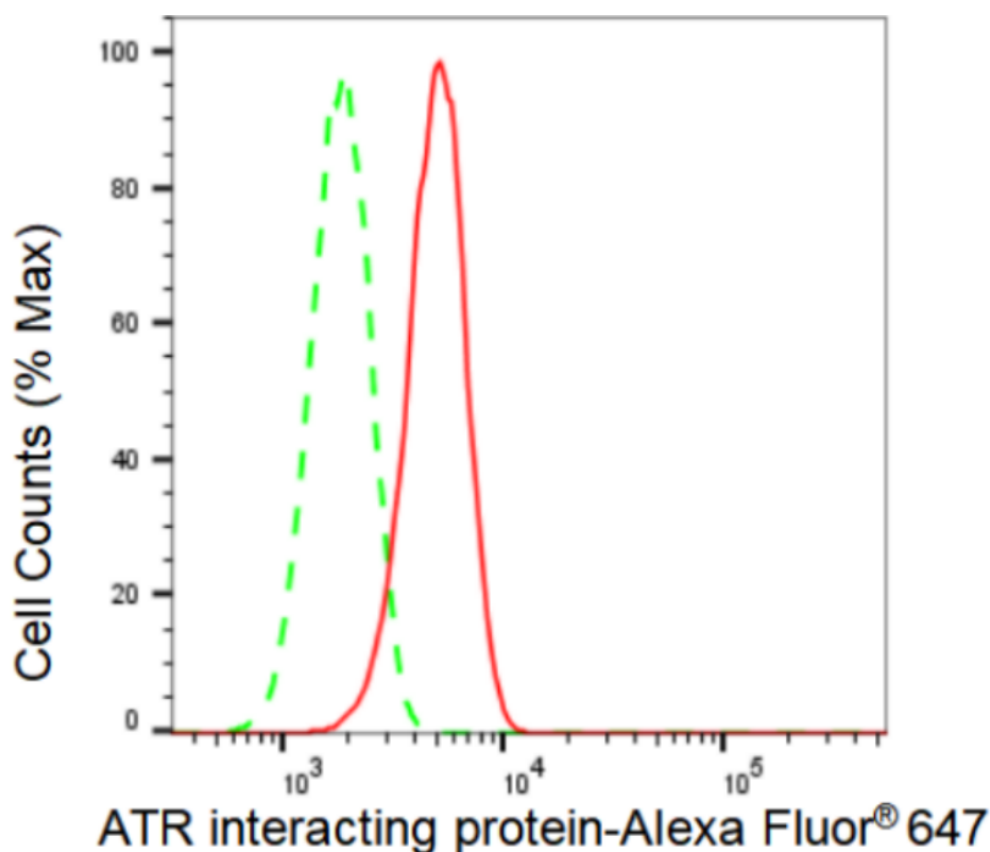
### SUPPORT

SUPPORT@GENUINBIOTECH.COM  
TEL: +1-540-855-7041

### ORDERS

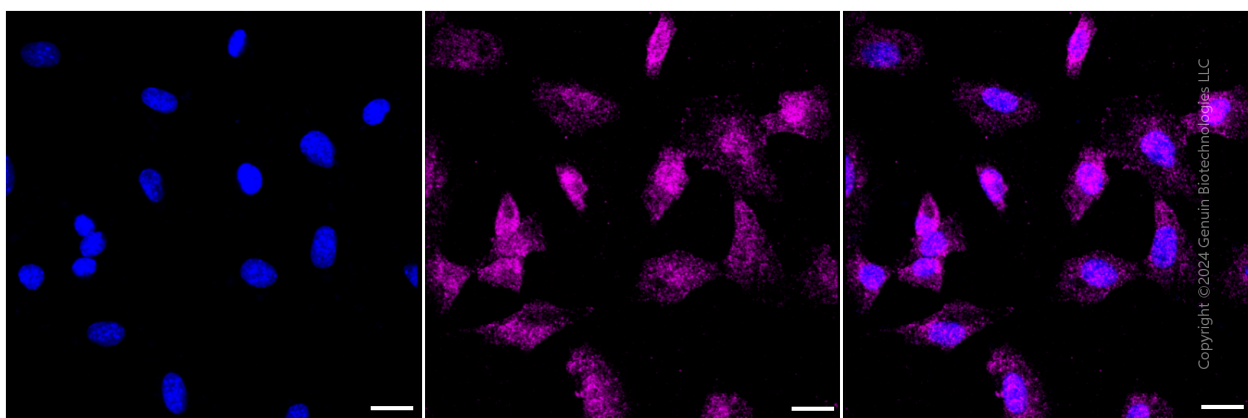
SALES@GENUINBIOTECH.COM  
FAX: +1-540-855-7041

[WWW.GENUINBIOTECH.COM](http://WWW.GENUINBIOTECH.COM)



Copyright ©2024 Genuin Biotechnologies LLC

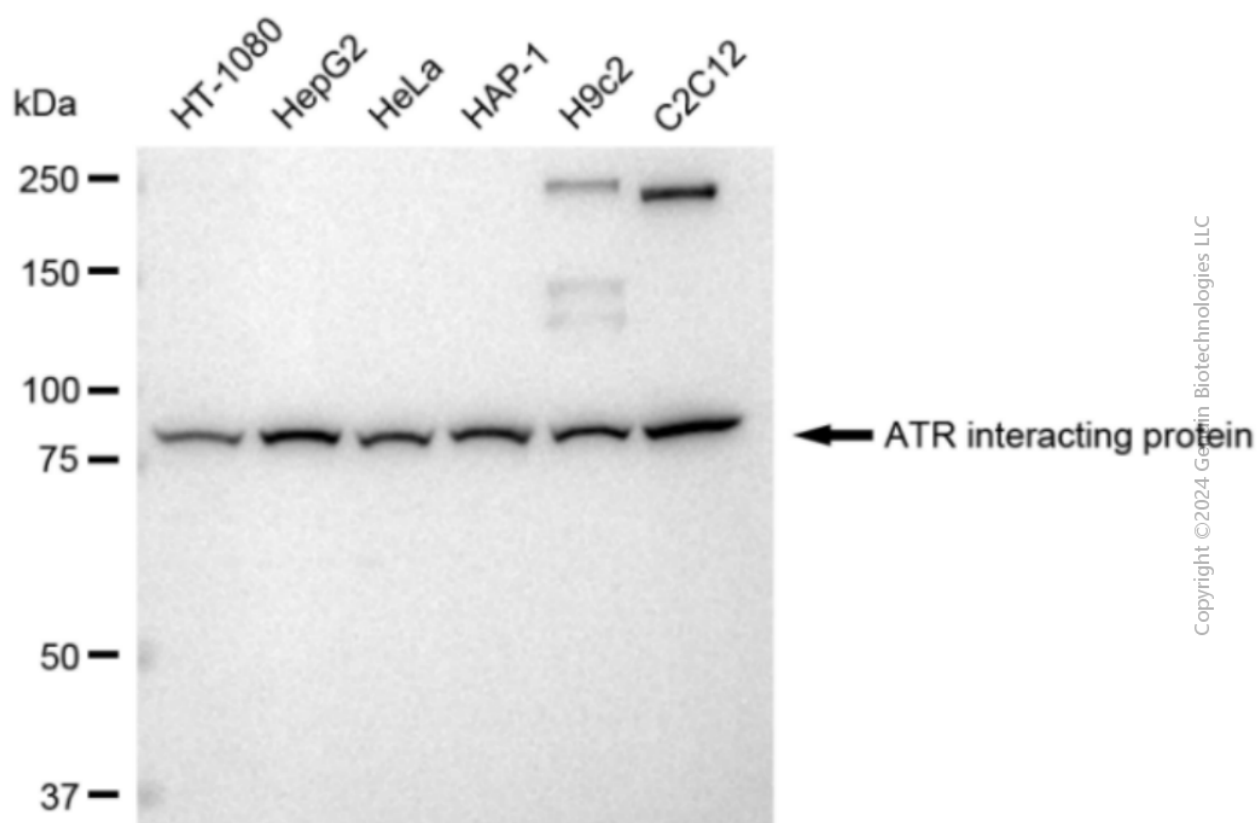
Flow cytometric analysis of ATR interacting protein expression in C2C12 cells using ATR interacting protein antibody (Cat#1655, 1:2000). Green, isotype control; red, ATR interacting protein.



Immunocytochemical staining of C2C12 cells with ATR interacting protein antibody (Cat#1655, 1:1,000). Nuclei were stained blue with DAPI; ATR interacting protein was stained magenta with Alexa Fluor® 647. Images were taken using Leica stellaris 5. Protein abundance based on laser Intensity and smart gain: Medium. Scale bar: 20 µm.

## Anti-ATR interacting protein Recombinant Rabbit Monoclonal Antibody

PAGE 3



Western blotting analysis using anti-ATR interacting protein antibody (Cat#1655). Total cell lysates (30 µg) from various cell lines were loaded and separated by SDS-PAGE. The blot was incubated with anti-ATR interacting protein antibody (Cat#1655, 1:5,000) and HRP-conjugated goat anti-rabbit secondary antibody (Cat#201, 1:20,000) respectively. Image was developed using FeQ™ ECL Substrate Kit (Cat#226).

### SUPPORT

SUPPORT@GENUINBIOTECH.COM  
TEL: +1-540-855-7041

### ORDERS

SALES@GENUINBIOTECH.COM  
FAX: +1-540-855-7041

WWW.GENUINBIOTECH.COM