

Anti-Survivin Recombinant Rabbit Monoclonal Antibody



Catalog #: 1656

Aliases

BIRC5; Baculoviral IAP Repeat Containing 5; Apoptosis Inhibitor 4; EPR-1; API4; Baculoviral IAP Repeat-Containing Protein 5; Apoptosis Inhibitor Survivin; Baculoviral IAP Repeat-Containing 5; Survivin; SURVIVIN; IAP4

Background

Gene Name: BIRC5

NCBI Gene Entry: [332](#)

UniProt Entry: [O15392](#)

Application Information

Molecular Weight: Predicted, 16 kDa; observed, 16 kDa

Clonality: Rabbit monoclonal antibody

Clone ID: 23GB3955

Species Reactivity: Mouse, rat

Applications Tested: Western blotting (WB), flow cytometry (FCM), immunocytochemistry (IC)

Immunogen

A synthesized peptide derived from mouse Survivin

Isotype

Rabbit IgG

Storage Buffer

Supplied in PBS (pH 7.4) containing 50% glycerol, and 0.02% sodium azide.

Storage

Store at -20 °C for one year.

Recommended Dilutions

Western Blotting (WB): 1:1,000-1:5,000

Flow Cytometry (FCM): 1:2,000

Immunocytochemistry (IC): 1:100-1:1,000

Note: This product is for research use only.

SUPPORT

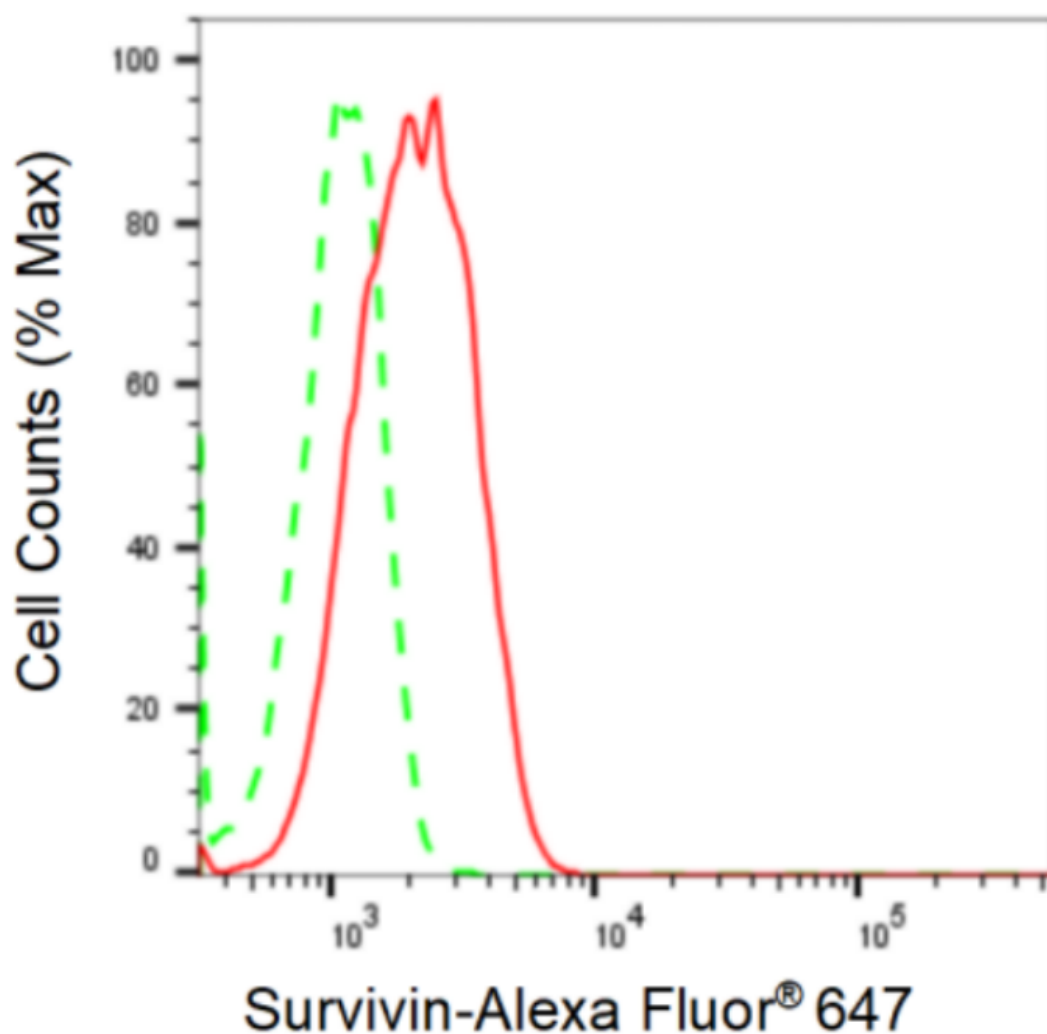
SUPPORT@GENUINBIOTECH.COM
TEL: +1-540-855-7041

ORDERS

SALES@GENUINBIOTECH.COM
FAX: +1-540-855-7041

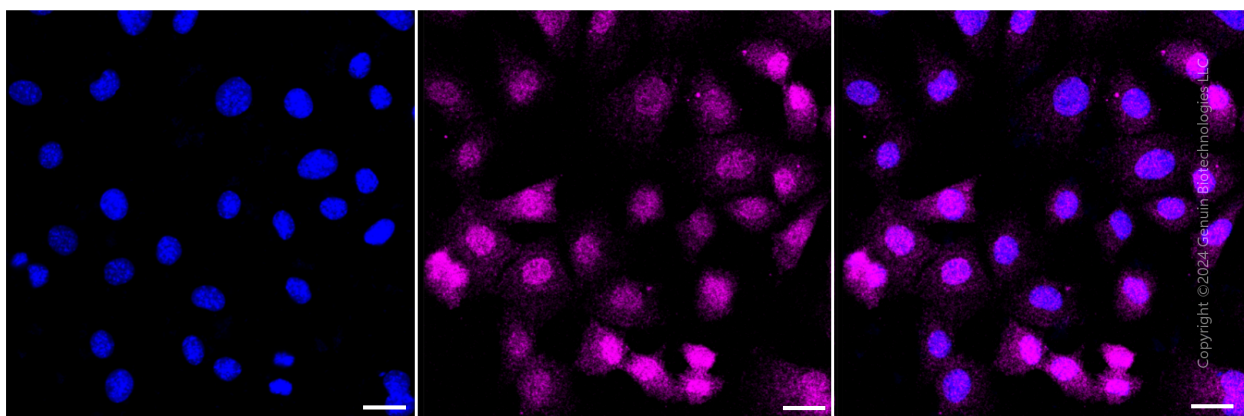
WWW.GENUINBIOTECH.COM

Validation Data



Copyright ©2024 Genuin Biotechnologies LLC

Flow cytometric analysis of Survivin expression in C2C12 cells using anti-Survivin antibody (Cat#1656, 1:2,000). Green, isotype control; red, Survivin.



Copyright ©2024 Genuin Biotechnologies LLC

SUPPORT

SUPPORT@GENUINBIOTECH.COM
TEL: +1-540-855-7041

ORDERS

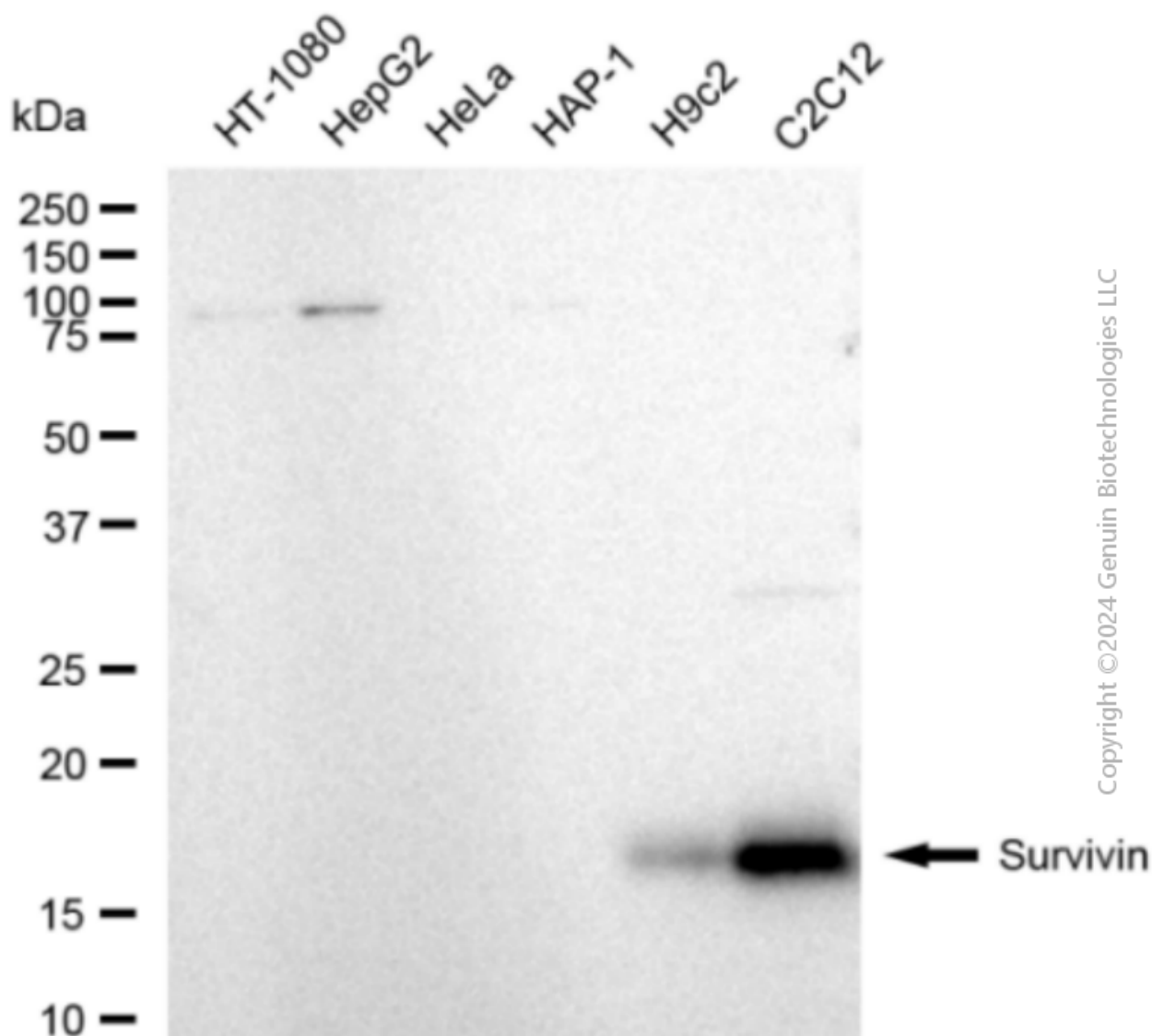
SALES@GENUINBIOTECH.COM
FAX: +1-540-855-7041

WWW.GENUINBIOTECH.COM

Anti-Survivin Recombinant Rabbit Monoclonal Antibody

PAGE 3

Immunocytochemical staining of C2C12 cells with Survivin antibody (Cat#1656, 1:1,000). Nuclei were stained blue with DAPI; Survivin was stained magenta with Alexa Fluor® 647. Images were taken using Leica stellaris 5. Protein abundance based on laser Intensity and smart gain: Medium. Scale bar: 20 μ m.



Western blotting analysis using anti-Survivin antibody (Cat#1656). Total cell lysates (30 μ g) from various cell lines were loaded and separated by SDS-PAGE. The blot was incubated with anti-Survivin antibody (Cat#1656, 1:5,000) and HRP-conjugated goat anti-rabbit secondary antibody (Cat#201, 1:20,000) respectively. Image was developed using FeQ™ ECL Substrate Kit (Cat#226).

SUPPORT

SUPPORT@GENUINBIOTECH.COM
TEL: +1-540-855-7041

ORDERS

SALES@GENUINBIOTECH.COM
FAX: +1-540-855-7041

WWW.GENUINBIOTECH.COM