

Anti-Phospho-B Raf (T401) Recombinant Rabbit Monoclonal Antibody



Catalog #: 1658

Aliases

BRAF; B-Raf Proto-Oncogene, Serine/Threonine Kinase; BRAF1; BRAF-1; V-Raf Murine Sarcoma Viral Oncogene Homolog B1; V-Raf Murine Sarcoma Viral Oncogene Homolog B; Serine/Threonine-Protein Kinase B-Raf; Proto-Oncogene B-Raf; RAFB1; B-Raf Proto-Oncogene Serine/Threonine-Protein Kinase (P94); Murine Sarcoma Viral (V-Raf) Oncogene Homolog B1; B-Raf Serine/Threonine-Protein; 94 KDa B-Raf Protein; EC 2.7.11.1; B-RAF1; B-Raf; NS7; P94

Background

Gene Name: BRAF

NCBI Gene Entry: [673](#)

UniProt Entry: [P15056](#)

Application Information

Molecular Weight: Predicted, 84 kDa; observed, 85 kDa

Clonality: Rabbit monoclonal antibody

Clone ID: 23GB3960

Species Reactivity: Human, mouse, rat

Applications Tested: Western blotting (WB), flow cytometry (FCM), immunocytochemistry (IC)

Immunogen

A synthesized peptide derived from human Phospho-B Raf (T401)

Isotype

Rabbit IgG

Storage Buffer

Supplied in PBS (pH 7.4) containing 50% glycerol, and 0.02% sodium azide.

Storage

Store at -20 °C for one year.

Recommended Dilutions

Western Blotting (WB): 1:1,000-1:5,000

Flow Cytometry (FCM): 1:2,000

Immunocytochemistry (IC): 1:100-1:1,000

SUPPORT

SUPPORT@GENUINBIOTECH.COM
TEL: +1-540-855-7041

ORDERS

SALES@GENUINBIOTECH.COM
FAX: +1-540-855-7041

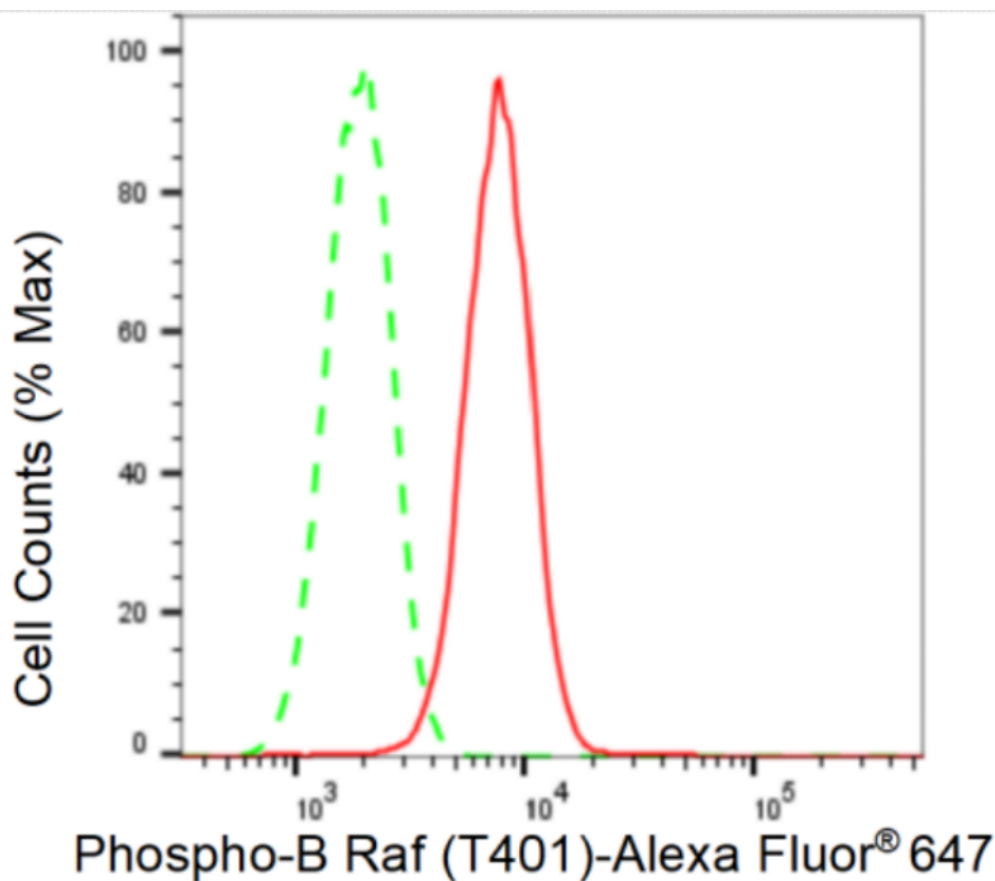
WWW.GENUINBIOTECH.COM

Anti-Phospho-B Raf (T401) Recombinant Rabbit Monoclonal Antibody

PAGE 2

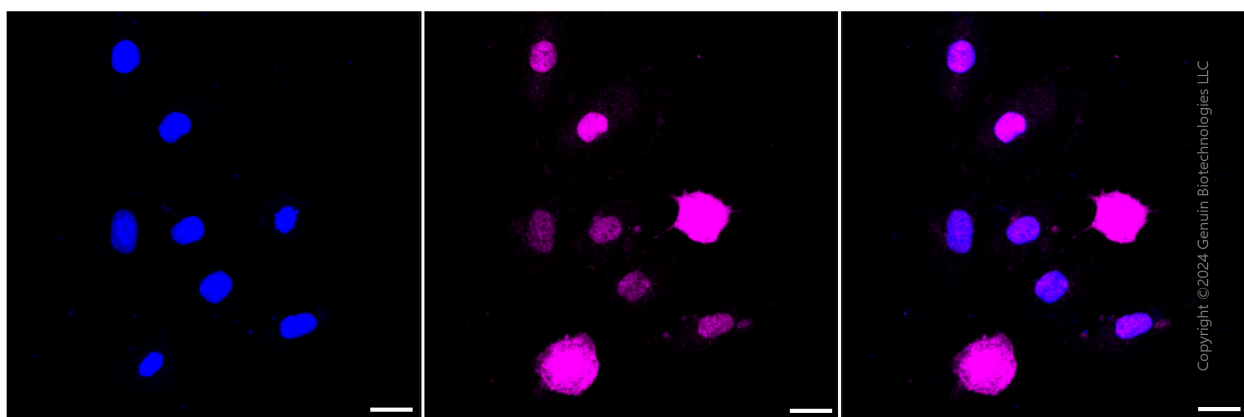
Note: This product is for research use only.

Validation Data



Copyright ©2024 Genuin Biotechnologies LLC

Flow cytometric analysis of Phospho-B Raf (T401) expression in H9c2 cells using Phospho-B Raf (T401) antibody (Cat#1658, 1:2,000). Green, isotype control; red, Phospho-B Raf (T401).



Immunocytochemical staining of H9C2 cells with Phospho-B Raf (T401) antibody (Cat#1658, 1:1,000). Nuclei were stained blue with DAPI; Phospho-B Raf (T401) was stained magenta with Alexa Fluor® 647. Images were taken using Leica stellaris 5. Protein abundance based on laser

SUPPORT

SUPPORT@GENUINBIOTECH.COM
TEL: +1-540-855-7041

ORDERS

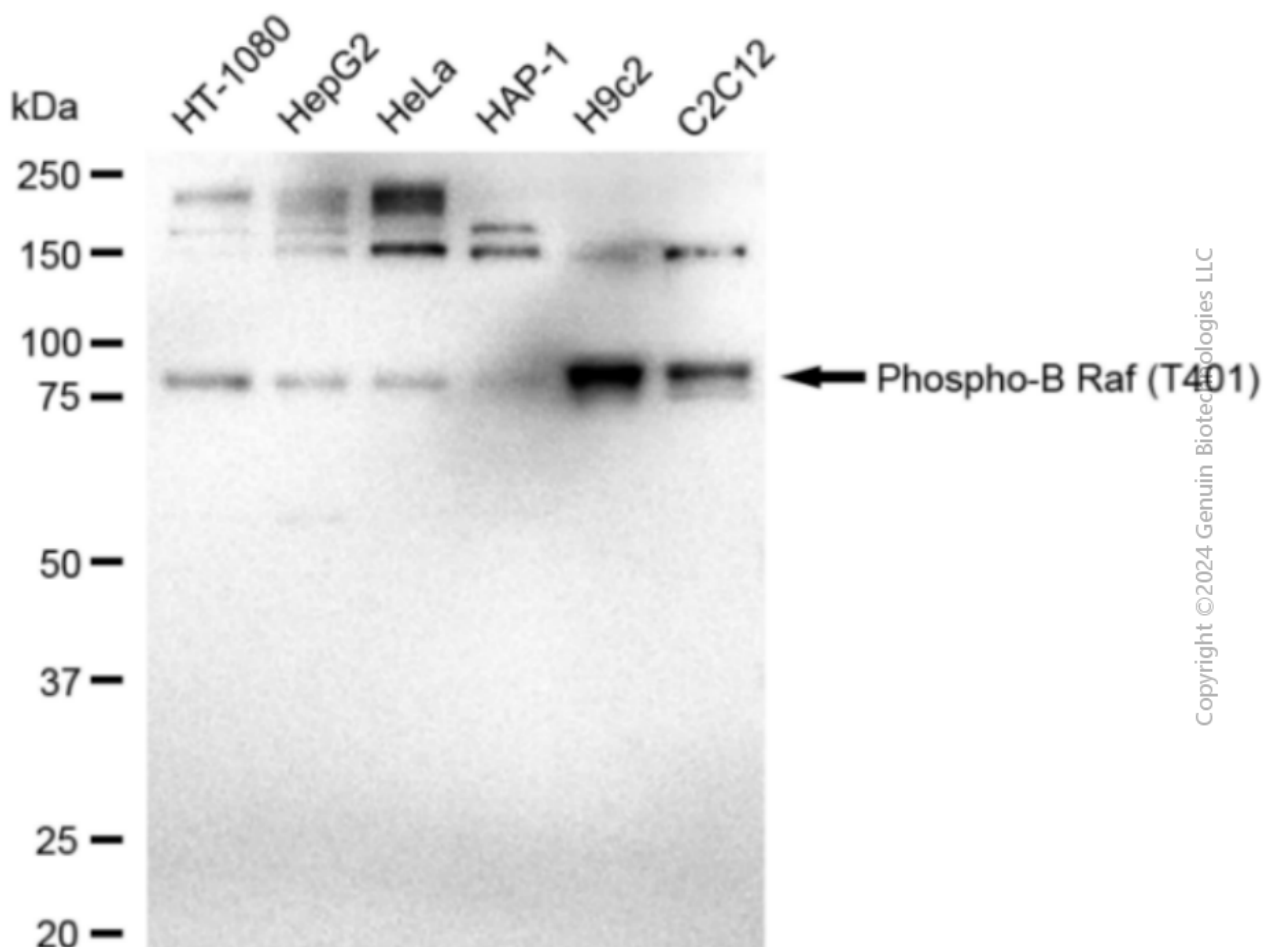
SALES@GENUINBIOTECH.COM
FAX: +1-540-855-7041

WWW.GENUINBIOTECH.COM

Anti-Phospho-B Raf (T401) Recombinant Rabbit Monoclonal Antibody

PAGE 3

Intensity and smart gain: Medium. Scale bar: 20 μ m.



Western blotting analysis using anti-Phospho-B Raf (T401) antibody (Cat#1658). Total cell lysates (30 μ g) from various cell lines were loaded and separated by SDS-PAGE. The blot was incubated with anti-Phospho-B Raf (T401) antibody (Cat#1658, 1:5,000) and HRP-conjugated goat anti-rabbit secondary antibody (Cat#201, 1:20,000) respectively. Image was developed using FeQ™ ECL Substrate Kit (Cat#226).

SUPPORT

SUPPORT@GENUINBIOTECH.COM
TEL: +1-540-855-7041

ORDERS

SALES@GENUINBIOTECH.COM
FAX: +1-540-855-7041

WWW.GENUINBIOTECH.COM