

Anti-High density lipoprotein binding protein Recombinant Rabbit Monoclonal Antibody



Catalog #: 1662

Aliases

HDLBP; High Density Lipoprotein Binding Protein; HBP; Vigilin; VGL; HDL-Binding Protein; High Density Lipoprotein-Binding Protein; PRO2900

Background

Gene Name: HDLBP

NCBI Gene Entry: [3069](#)

UniProt Entry: [Q00341](#)

Application Information

Molecular Weight: Predicted, 141 kDa; observed, 150 kDa

Clonality: Rabbit monoclonal antibody

Clone ID: 23GB3970

Species Reactivity: Human, mouse, rat

Applications Tested: Western blotting (WB), flow cytometry (FCM), immunocytochemistry (IC)

Immunogen

A synthesized peptide derived from human HDLBP

Isotype

Rabbit IgG

Storage Buffer

Supplied in PBS (pH 7.4) containing 50% glycerol, and 0.02% sodium azide.

Storage

Store at -20 °C for one year.

Recommended Dilutions

Western Blotting (WB): 1:1,000-1:5,000

Flow Cytometry (FCM): 1:2,000

Immunocytochemistry (IC): 1:100-1:1,000

Note: This product is for research use only.

Validation Data

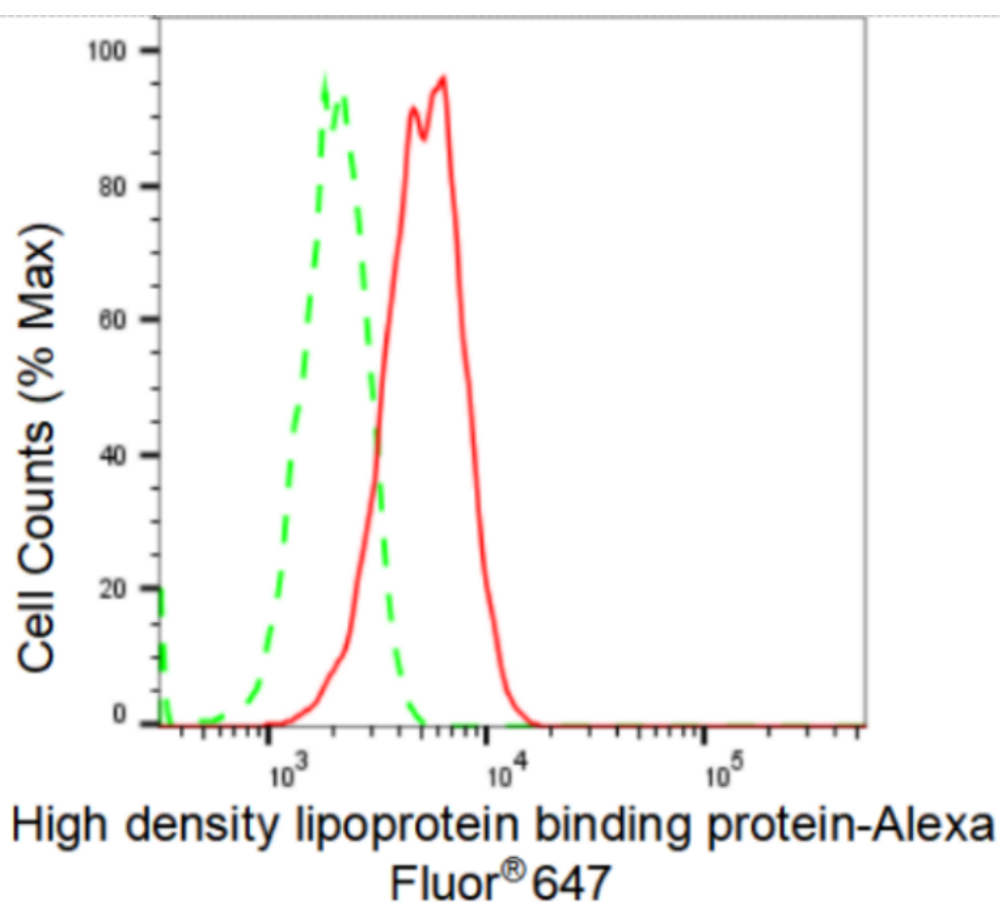
SUPPORT

SUPPORT@GENUINBIOTECH.COM
TEL: +1-540-855-7041

ORDERS

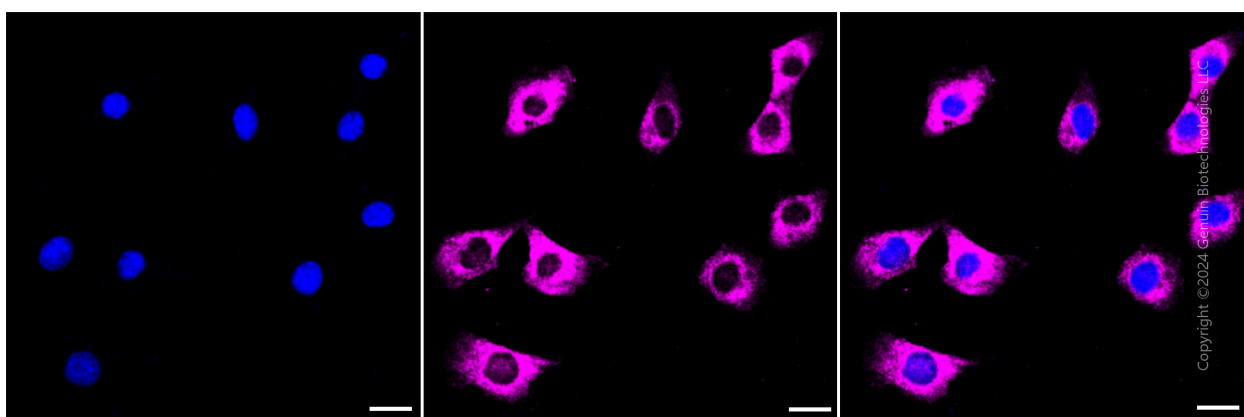
SALES@GENUINBIOTECH.COM
FAX: +1-540-855-7041

WWW.GENUINBIOTECH.COM



Copyright ©2024 Genuin Biotechnologies LLC

Flow cytometric analysis of High density lipoprotein binding protein expression in C2C12 cells using High density lipoprotein binding protein antibody (Cat#1662, 1:2000). Green, isotype control; red, High density lipoprotein binding protein.



Immunocytochemical staining of C2C12 cells with High density lipoprotein binding protein antibody (Cat#1662, 1:1,000). Nuclei were stained blue with DAPI; High density lipoprotein binding protein was stained magenta with Alexa Fluor® 647. Images were taken using Leica stellaris 5. Protein abundance based on laser Intensity and smart gain: Medium. Scale bar: 20 μ m.

SUPPORT

SUPPORT@GENUINBIOTECH.COM
TEL: +1-540-855-7041

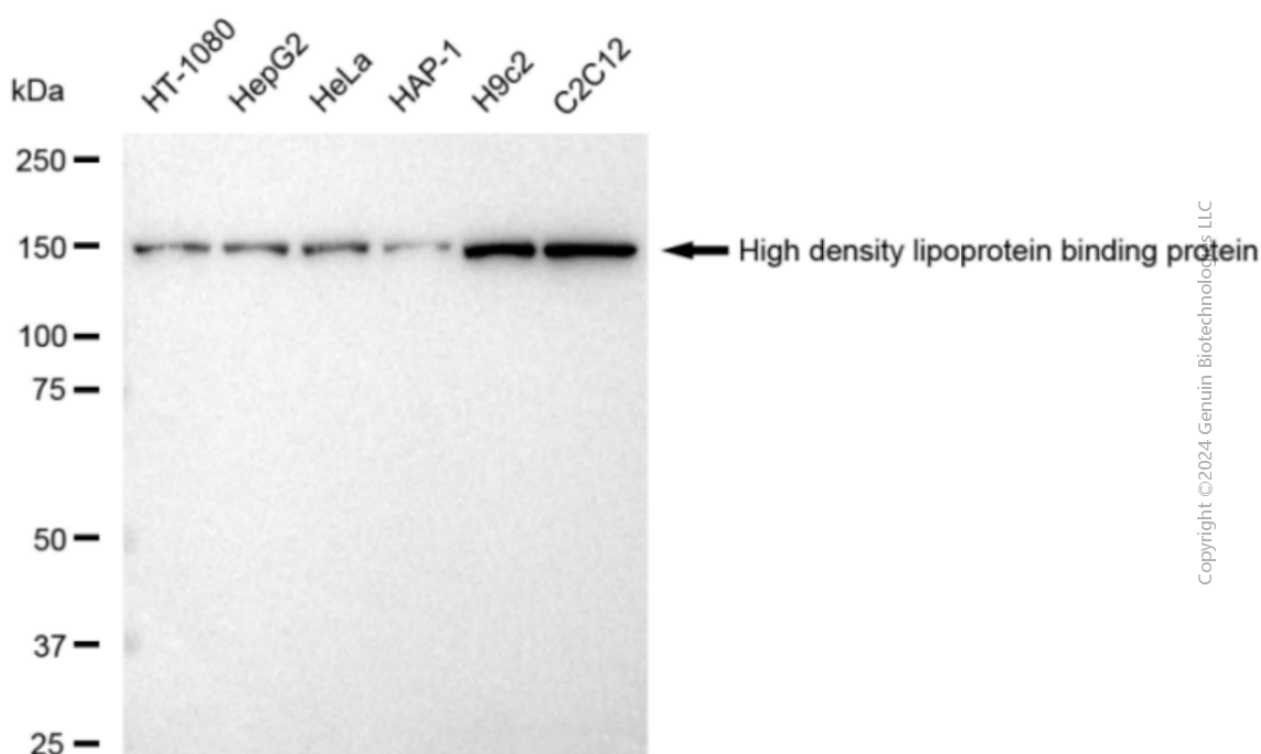
ORDERS

SALES@GENUINBIOTECH.COM
FAX: +1-540-855-7041

WWW.GENUINBIOTECH.COM

Anti-High density lipoprotein binding protein Recombinant Rabbit Monoclonal Antibody

PAGE 3



Western blotting analysis using anti-High density lipoprotein binding protein antibody (Cat#1662). Total cell lysates (30 μ g) from various cell lines were loaded and separated by SDS-PAGE. The blot was incubated with anti-High density lipoprotein binding protein antibody (Cat#1662, 1:5,000) and HRP-conjugated goat anti-rabbit secondary antibody (Cat#201, 1:20,000) respectively. Image was developed using FeQ™ ECL Substrate Kit (Cat#226).

SUPPORT

SUPPORT@GENUINBIOTECH.COM
TEL: +1-540-855-7041

ORDERS

SALES@GENUINBIOTECH.COM
FAX: +1-540-855-7041

WWW.GENUINBIOTECH.COM