

# Anti-Hsp90 $\alpha$ Recombinant Rabbit Monoclonal Antibody



**Catalog #: 1669**

## Aliases

HSP90AA1; Heat Shock Protein 90 Alpha Family Class A Member 1; HSP90N; HSPC1; HSPCA; Heat Shock Protein 90kDa Alpha (Cytosolic), Class A Member 1; Lipopolysaccharide-Associated Protein; Heat Shock 90kDa Protein 1, Alpha; Renal Carcinoma Antigen NY-REN-38; Heat Shock 90kD Protein 1, Alpha; Heat Shock Protein HSP 90-Alpha; LPS-Associated Protein; Heat Shock 86 KDa; FLJ31884; HSP90A; HSP 86; Hsp89; Hsp90; HSP86; LAP-2; Heat Shock Protein 90kDa Alpha Family Class A Member 1; Epididymis Secretory Sperm Binding Protein Li 65p; Epididymis Luminal Secretory Protein 52; Heat Shock 90kD Protein 1, Alpha-Like 4; Heat Shock 90kD Protein, Alpha-Like 4; EC 3.6.4.10; HEL-S-65p; HSPCAL1; HSPCAL4; HSP89A; Hsp103; HSP89; HSP90; EL52; HSPN; LAP2

## Background

Gene Name: HSP90AA1

NCBI Gene Entry: [3320](#)

UniProt Entry: [P07900](#)

## Application Information

Molecular Weight: Predicted, 85 kDa; observed, 85 kDa

Clonality: Rabbit monoclonal antibody

Clone ID: 23GB4000

Species Reactivity: Human, mouse, rat

Applications Tested: Western blotting (WB), flow cytometry (FCM), immunocytochemistry (IC)

## Immunogen

A synthesized peptide derived from human Hsp90 alpha

## Isotype

Rabbit IgG

## Storage Buffer

Supplied in PBS (pH 7.4) containing 50% glycerol, and 0.02% sodium azide.

## Storage

Store at -20 °C for one year.

## Recommended Dilutions

---

### SUPPORT

SUPPORT@GENUINBIOTECH.COM  
TEL: +1-540-855-7041

### ORDERS

SALES@GENUINBIOTECH.COM  
FAX: +1-540-855-7041

[WWW.GENUINBIOTECH.COM](http://WWW.GENUINBIOTECH.COM)

# Anti-Hsp90 $\alpha$ Recombinant Rabbit Monoclonal Antibody

PAGE 2

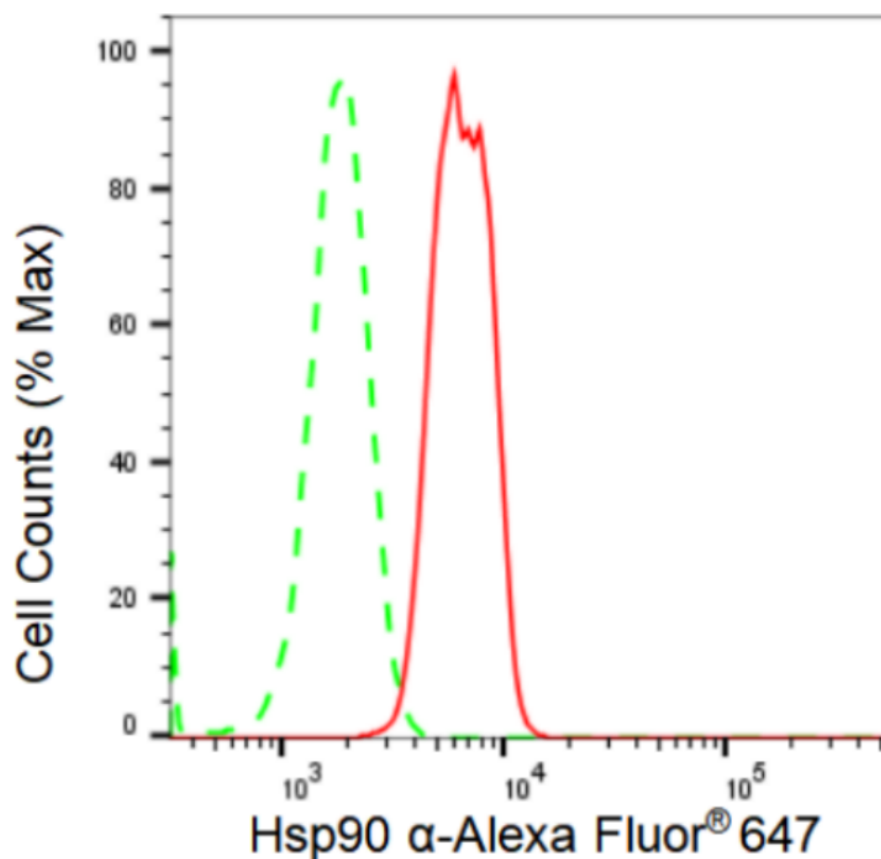
Western Blotting (WB): 1:1,000-1:5,000

Flow Cytometry (FCM): 1:2,000

Immunocytochemistry (IC): 1:100-1:1,000

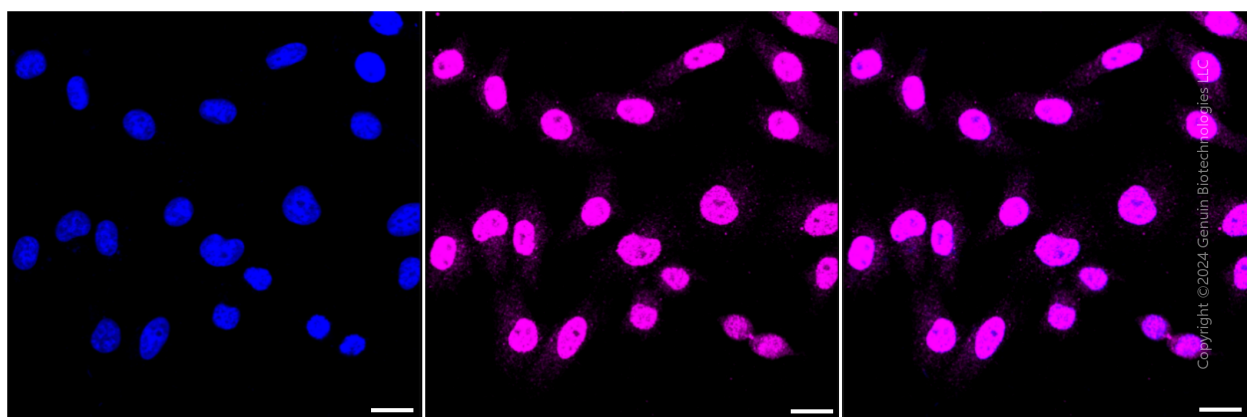
**Note:** This product is for research use only.

## Validation Data



Copyright ©2024 Genuin Biotechnologies LLC

Flow cytometric analysis of Hsp90  $\alpha$  expression in HepG2 cells using Hsp90  $\alpha$  antibody (Cat#1669, 1:2,000). Green, isotype control; red, Hsp90  $\alpha$ .



Copyright ©2024 Genuin Biotechnologies LLC

### SUPPORT

SUPPORT@GENUINBIOTECH.COM  
TEL: +1-540-855-7041

### ORDERS

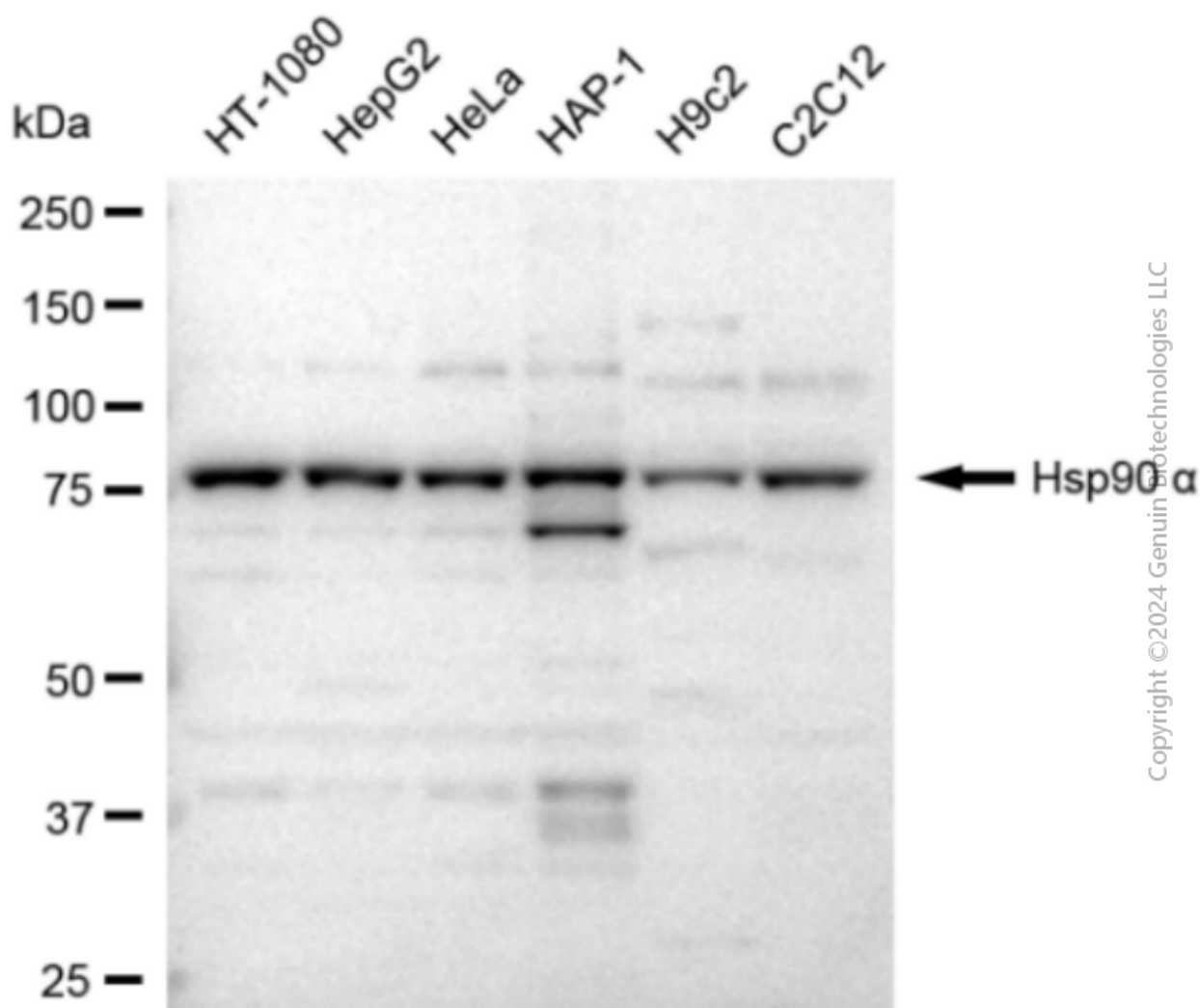
SALES@GENUINBIOTECH.COM  
FAX: +1-540-855-7041

WWW.GENUINBIOTECH.COM

## Anti-Hsp90 $\alpha$ Recombinant Rabbit Monoclonal Antibody

PAGE 3

Immunocytochemical staining of HepG2 cells with Hsp90  $\alpha$  antibody (Cat#1669, 1:1,000). Nuclei were stained blue with DAPI; Hsp90  $\alpha$  was stained magenta with Alexa Fluor® 647. Images were taken using Leica stellaris 5. Protein abundance based on laser Intensity and smart gain: Medium. Scale bar: 20  $\mu$ m.



Western blotting analysis using anti-Hsp90  $\alpha$  antibody (Cat#1669). Total cell lysates (30  $\mu$ g) from various cell lines were loaded and separated by SDS-PAGE. The blot was incubated with anti-Hsp90  $\alpha$  antibody (Cat#1669, 1:5,000) and HRP-conjugated goat anti-rabbit secondary antibody (Cat#201, 1:20,000) respectively. Image was developed using FeQ™ ECL Substrate Kit (Cat#226).

### SUPPORT

SUPPORT@GENUINBIOTECH.COM  
TEL: +1-540-855-7041

### ORDERS

SALES@GENUINBIOTECH.COM  
FAX: +1-540-855-7041

[WWW.GENUINBIOTECH.COM](http://WWW.GENUINBIOTECH.COM)