

Anti-Hsp90 α Recombinant Rabbit Monoclonal Antibody



Catalog #: 1670

Aliases

HSP90AA1; Heat Shock Protein 90 Alpha Family Class A Member 1; HSP90N; HSPC1; HSPCA; Heat Shock Protein 90kDa Alpha (Cytosolic), Class A Member 1; Lipopolysaccharide-Associated Protein; Heat Shock 90kDa Protein 1, Alpha; Renal Carcinoma Antigen NY-REN-38; Heat Shock 90kD Protein 1, Alpha; Heat Shock Protein HSP 90-Alpha; LPS-Associated Protein; Heat Shock 86 KDa; FLJ31884; HSP90A; HSP 86; Hsp89; Hsp90; HSP86; LAP-2; Heat Shock Protein 90kDa Alpha Family Class A Member 1; Epididymis Secretory Sperm Binding Protein Li 65p; Epididymis Luminal Secretory Protein 52; Heat Shock 90kD Protein 1, Alpha-Like 4; Heat Shock 90kD Protein, Alpha-Like 4; EC 3.6.4.10; HEL-S-65p; HSPCAL1; HSPCAL4; HSP89A; Hsp103; HSP89; HSP90; EL52; HSPN; LAP2

Background

Gene Name: HSP90AA1

NCBI Gene Entry: [3320](#)

UniProt Entry: [P07900](#)

Application Information

Molecular Weight: Predicted, 85 kDa; observed, 75 kDa

Clonality: Rabbit monoclonal antibody

Clone ID: 23GB4005

Species Reactivity: Human, mouse, rat

Applications Tested: Western blotting (WB), flow cytometry (FCM), immunocytochemistry (IC)

Immunogen

A synthesized peptide derived from human Hsp90 alpha

Isotype

Rabbit IgG

Storage Buffer

Supplied in PBS (pH 7.4) containing 50% glycerol, and 0.02% sodium azide.

Storage

Store at -20 °C for one year.

Recommended Dilutions

SUPPORT

SUPPORT@GENUINBIOTECH.COM
TEL: +1-540-855-7041

ORDERS

SALES@GENUINBIOTECH.COM
FAX: +1-540-855-7041

WWW.GENUINBIOTECH.COM

Anti-Hsp90 α Recombinant Rabbit Monoclonal Antibody

PAGE 2

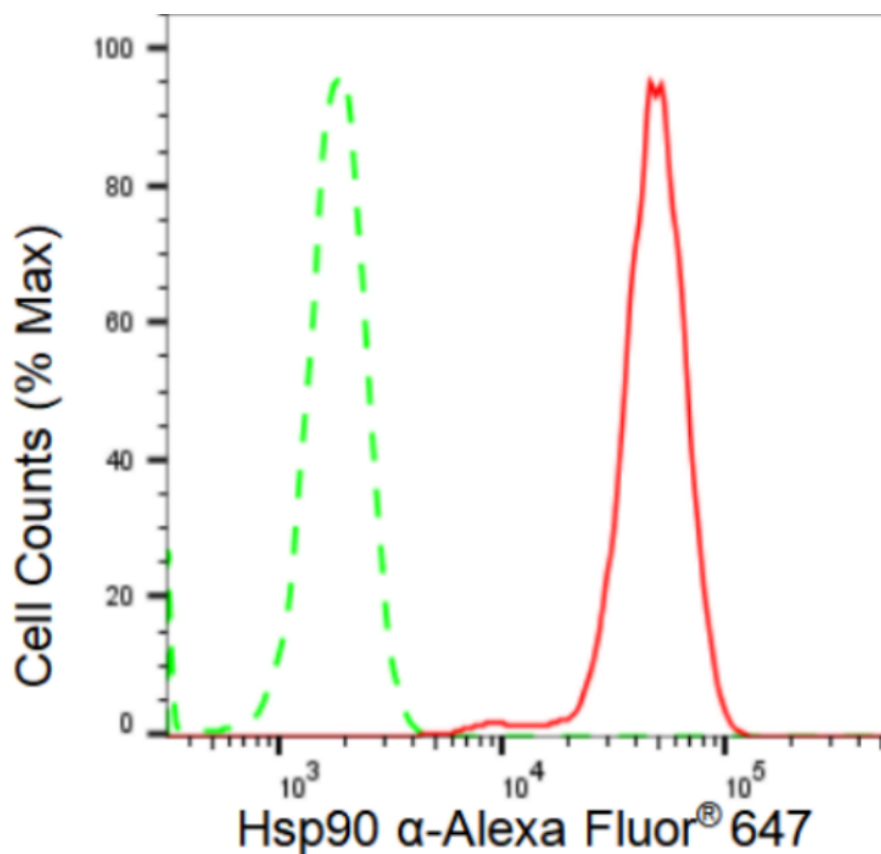
Western Blotting (WB): 1:1,000-1:5,000

Flow Cytometry (FCM): 1:2,000

Immunocytochemistry (IC): 1:100-1:1,000

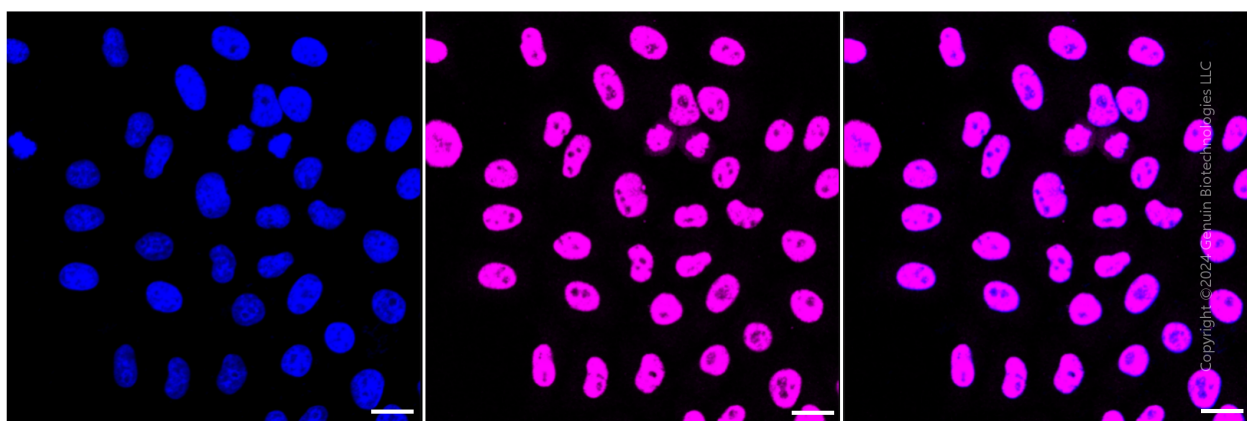
Note: This product is for research use only.

Validation Data



Copyright ©2024 Genuin Biotechnologies LLC

Flow cytometric analysis of Hsp90 α expression in HepG2 cells using Hsp90 α antibody (Cat#1670, 1:2,000). Green, isotype control; red, Hsp90 α .



Copyright ©2024 Genuin Biotechnologies LLC

SUPPORT

SUPPORT@GENUINBIOTECH.COM
TEL: +1-540-855-7041

ORDERS

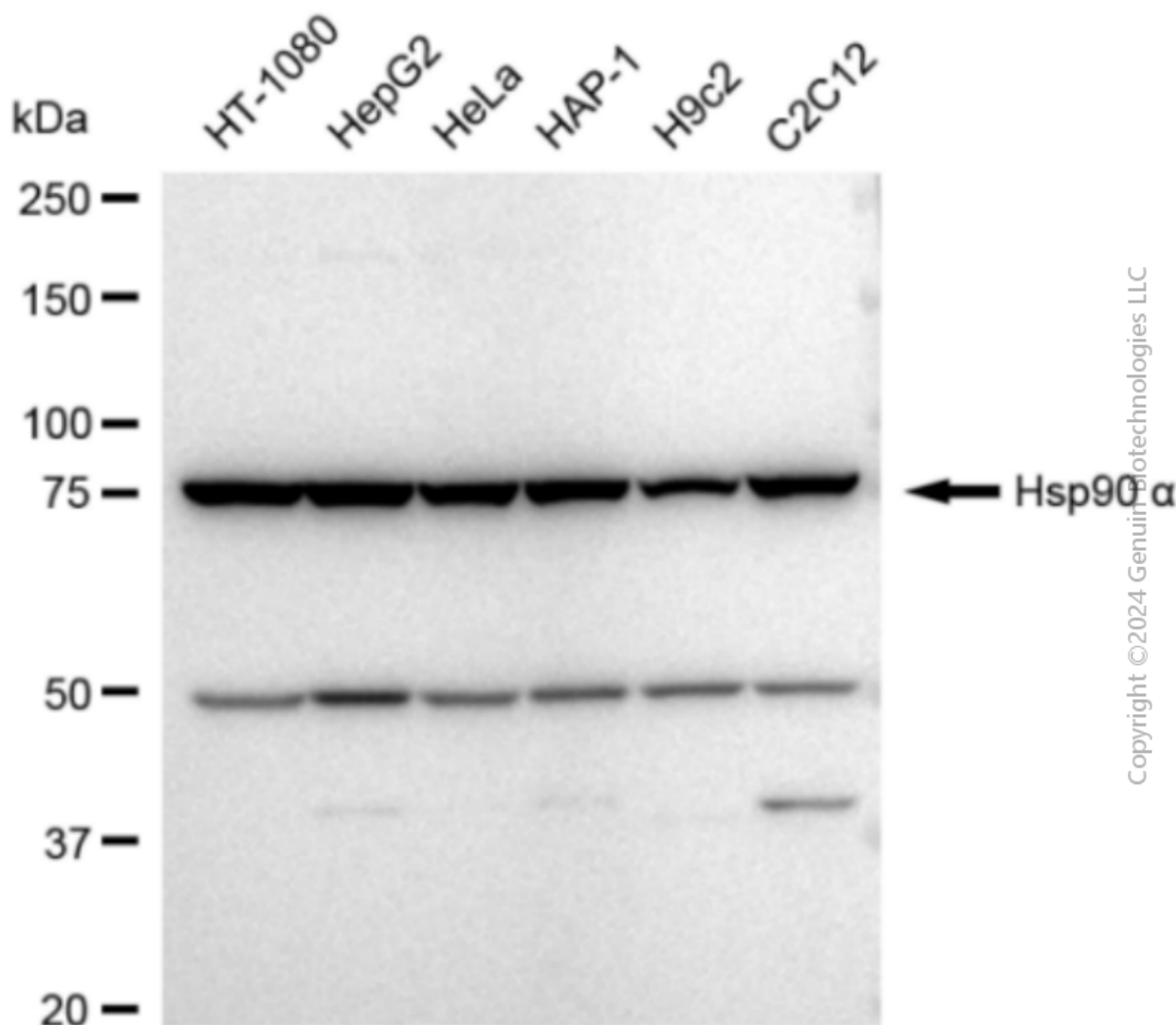
SALES@GENUINBIOTECH.COM
FAX: +1-540-855-7041

WWW.GENUINBIOTECH.COM

Anti-Hsp90 α Recombinant Rabbit Monoclonal Antibody

PAGE 3

Immunocytochemical staining of HepG2 cells with Hsp90 α antibody (Cat#1670, 1:1,000). Nuclei were stained blue with DAPI; Hsp90 α was stained magenta with Alexa Fluor® 647. Images were taken using Leica stellaris 5. Protein abundance based on laser Intensity and smart gain: High. Scale bar: 20 μ m.



Western blotting analysis using anti-Hsp90 α antibody (Cat#1670). Total cell lysates (30 μ g) from various cell lines were loaded and separated by SDS-PAGE. The blot was incubated with anti-Hsp90 α antibody (Cat#1670, 1:5,000) and HRP-conjugated goat anti-rabbit secondary antibody (Cat#201, 1:20,000) respectively. Image was developed using FeQ™ ECL Substrate Kit (Cat#226).

SUPPORT

SUPPORT@GENUINBIOTECH.COM
TEL: +1-540-855-7041

ORDERS

SALES@GENUINBIOTECH.COM
FAX: +1-540-855-7041

WWW.GENUINBIOTECH.COM