

Anti-Hsp90 Recombinant Rabbit Monoclonal Antibody



Catalog #: 1673

Aliases

HSP90AA1; Heat Shock Protein 90 Alpha Family Class A Member 1; HSP90N; HSPC1; HSPCA; Heat Shock Protein 90kDa Alpha (Cytosolic), Class A Member 1; Lipopolysaccharide-Associated Protein; Heat Shock 90kDa Protein 1, Alpha; Renal Carcinoma Antigen NY-REN-38; Heat Shock 90kD Protein 1, Alpha; Heat Shock Protein HSP 90-Alpha; LPS-Associated Protein; Heat Shock 86 KDa; FLJ31884; HSP90A; HSP 86; Hsp89; Hsp90; HSP86; LAP-2; Heat Shock Protein 90kDa Alpha Family Class A Member 1; Epididymis Secretory Sperm Binding Protein Li 65p; Epididymis Luminal Secretory Protein 52; Heat Shock 90kD Protein 1, Alpha-Like 4; Heat Shock 90kD Protein, Alpha-Like 4; EC 3.6.4.10; HEL-S-65p; HSPCAL1; HSPCAL4; HSP89A; Hsp103; HSP89; HSP90; EL52; HSPN; LAP2□HSP90AB1; Heat Shock Protein 90 Alpha Family Class B Member 1; HSPC2; HSPCB; Heat Shock Protein 90kDa Alpha (Cytosolic), Class B Member 1; Heat Shock Protein Family C Member 3; Heat Shock 90kD Protein 1, Beta; Heat Shock Protein HSP 90-Beta; Heat Shock 84 KDaHSP90B ; HSP84; Heat Shock Protein 90kDa Alpha Family Class B Member 1; Heat Shock 90kDa Protein 1, Beta; Heat Shock Protein 90 KDa; HSP90-Beta; D6S182; HSP 90; HSP 84; HSPC3

Background

Gene Name: HSP90AA1/HSP90AB1

NCBI Gene Entry: [3320/3326](#)

UniProt Entry: [P07900/P08238](#)

Application Information

Molecular Weight: Predicted, 85,83 kDa; observed, 83 kDa

Clonality: Rabbit monoclonal antibody

Clone ID: 23GB4010

Species Reactivity: Human, mouse, rat

Applications Tested: Western blotting (WB), flow cytometry (FCM)

Immunogen

A synthesized peptide derived from human Hsp90

Isotype

Rabbit IgG

Storage Buffer

Supplied in PBS (pH 7.4) containing 50% glycerol, and 0.02% sodium azide.

SUPPORT

SUPPORT@GENUINBIOTECH.COM
TEL: +1-540-855-7041

ORDERS

SALES@GENUINBIOTECH.COM
FAX: +1-540-855-7041

WWW.GENUINBIOTECH.COM

Storage

Store at -20 °C for one year.

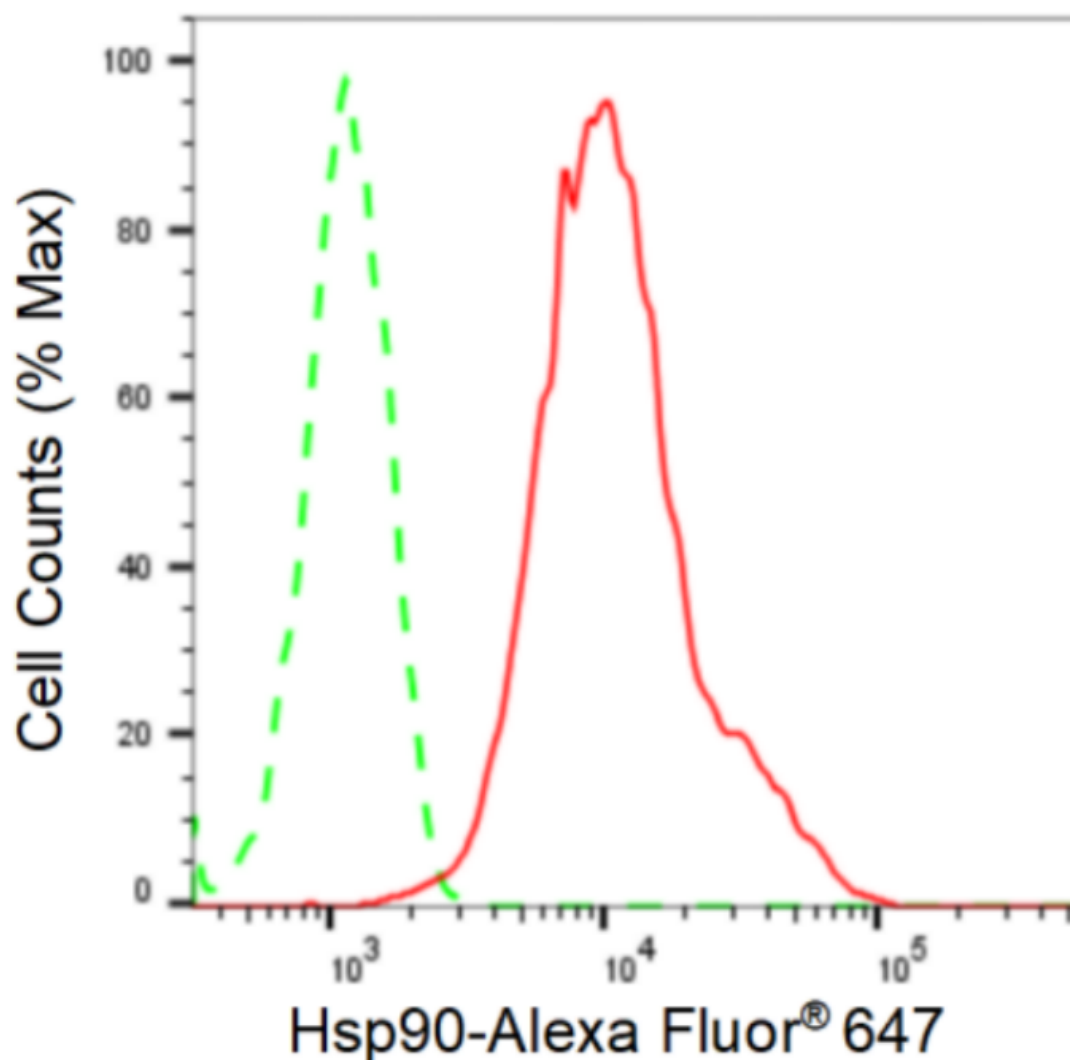
Recommended Dilutions

Western Blotting (WB): 1:1,000-1:5,000

Flow Cytometry (FCM): 1:2,000

Note: This product is for research use only.

Validation Data



Copyright ©2024 Genuin Biotechnologies LLC

Flow cytometric analysis of Hsp90 expression in HepG2 cells using anti-Hsp90 antibody (Cat#1673, 1:2,000). Green, isotype control; red, Hsp90.

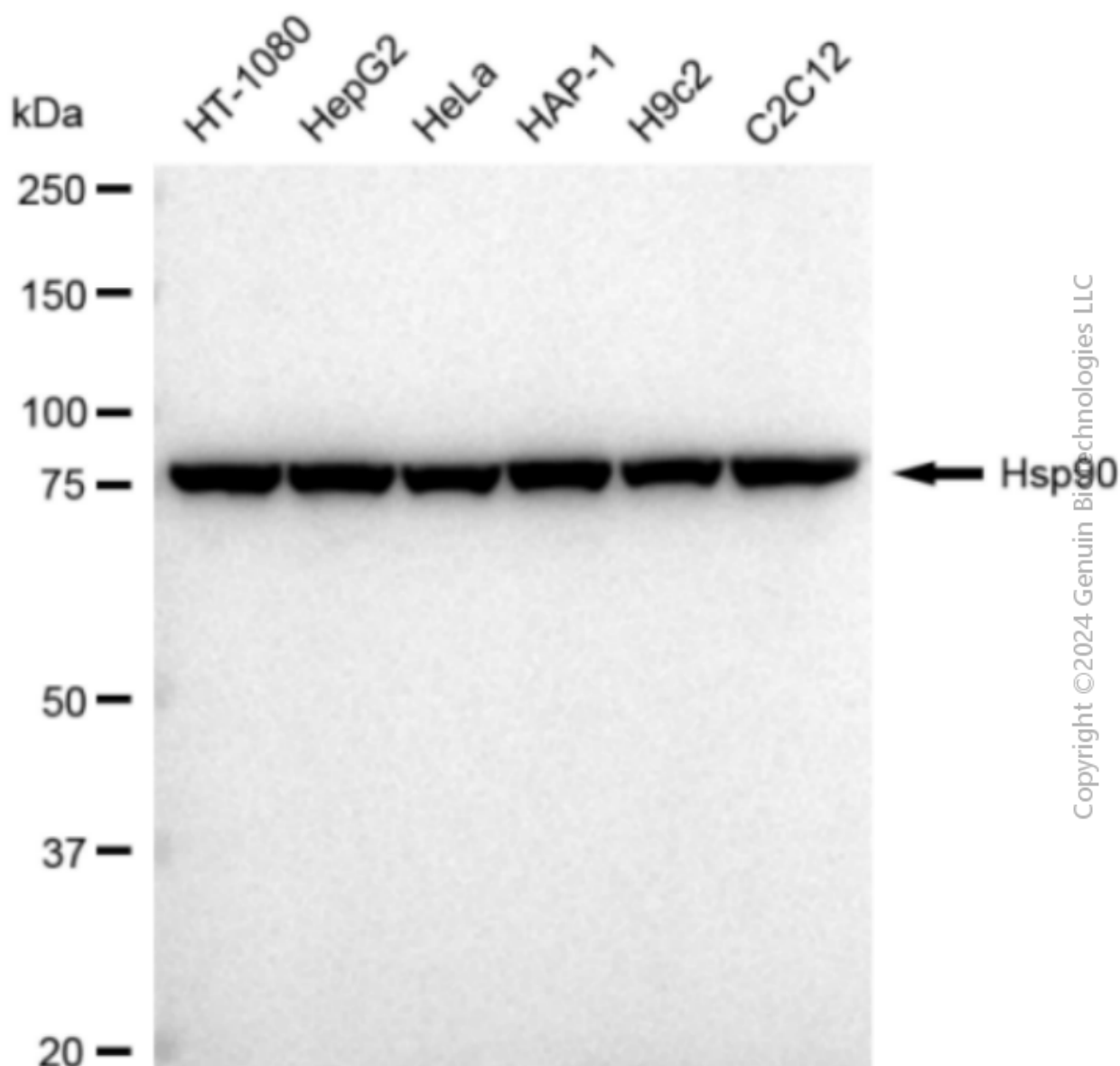
SUPPORT

SUPPORT@GENUINBIOTECH.COM
TEL: +1-540-855-7041

ORDERS

SALES@GENUINBIOTECH.COM
FAX: +1-540-855-7041

WWW.GENUINBIOTECH.COM



Copyright © 2024 Genuin Biotechnologies LLC

Western blotting analysis using anti-Hsp90 antibody (Cat#1673). Total cell lysates (30 µg) from various cell lines were loaded and separated by SDS-PAGE. The blot was incubated with anti-Hsp90 antibody (Cat#1673, 1:5,000) and HRP-conjugated goat anti-rabbit secondary antibody (Cat#201, 1:20,000) respectively. Image was developed using FeQTM ECL Substrate Kit (Cat#226).