

Anti-MGMT Recombinant Rabbit Monoclonal Antibody



Catalog #: 1683

Aliases

MGMT; O-6-Methylguanine-DNA Methyltransferase; Methylated-DNA--Protein-Cysteine Methyltransferase; 6-O-Methylguanine-DNA Methyltransferase; O-6-Methylguanine-DNA-Alkyltransferase; EC 2.1.1.63; O6-Methylguanine-DNA Methyltransferase; Methylguanine-DNA Methyltransferase

Background

Gene Name: MGMT

NCBI Gene Entry: [4255](#)

UniProt Entry: [P16455](#)

Application Information

Molecular Weight: Predicted, 22 kDa; observed, 22 kDa

Clonality: Rabbit monoclonal antibody

Clone ID: 23GB4055

Species Reactivity: Human

Applications Tested: Western blotting (WB), flow cytometry (FCM), immunocytochemistry (IC)

Immunogen

A synthesized peptide derived from human MGMT

Isotype

Rabbit IgG

Storage Buffer

Supplied in PBS (pH 7.4) containing 50% glycerol, and 0.02% sodium azide.

Storage

Store at -20 °C for one year.

Recommended Dilutions

Western Blotting (WB): 1:1,000-1:5,000

Flow Cytometry (FCM): 1:2,000

Immunocytochemistry (IC): 1:100-1:1,000

SUPPORT

SUPPORT@GENUINBIOTECH.COM
TEL: +1-540-855-7041

ORDERS

SALES@GENUINBIOTECH.COM
FAX: +1-540-855-7041

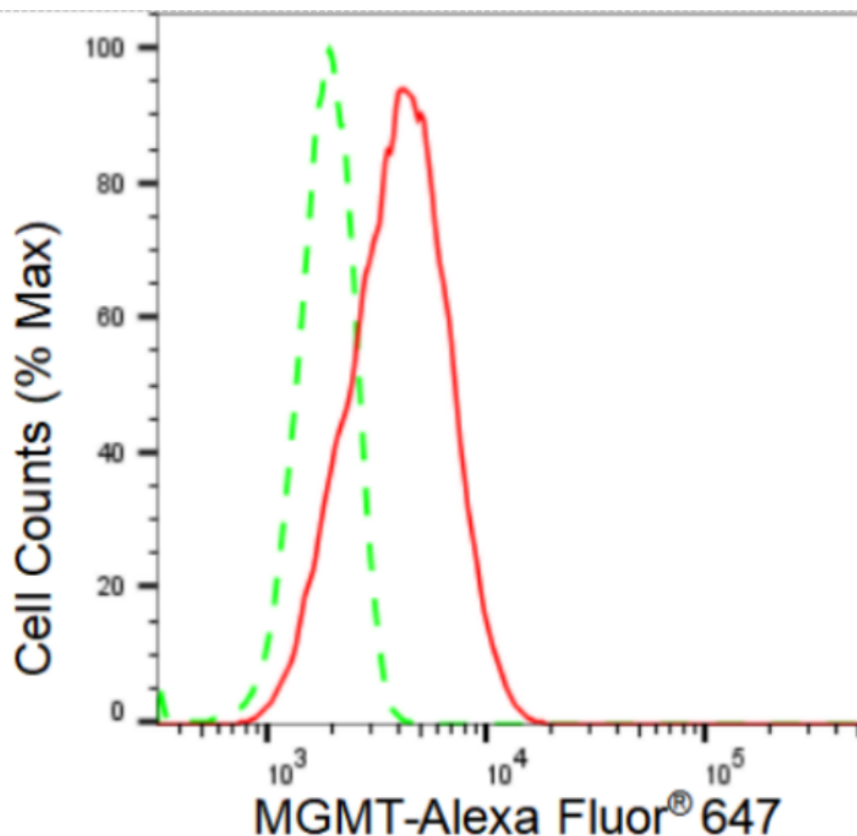
WWW.GENUINBIOTECH.COM

Anti-MGMT Recombinant Rabbit Monoclonal Antibody

PAGE 2

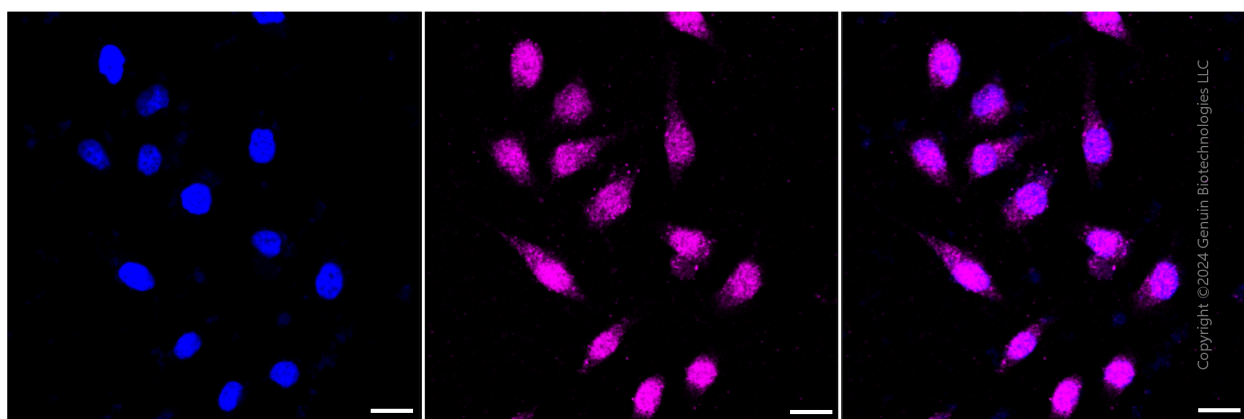
Note: This product is for research use only.

Validation Data



Copyright ©2024 Genuin Biotechnologies LLC

Flow cytometric analysis of MGMT expression in HeLa cells using MGMT antibody (Cat#1683, 1:2,000). Green, isotype control; red, MGMT.



Copyright ©2024 Genuin Biotechnologies LLC

Immunocytochemical staining of HeLa cells with MGMT antibody (Cat#1683, 1:1,000). Nuclei were stained blue with DAPI; MGMT was stained magenta with Alexa Fluor® 647. Images were taken using Leica stellaris 5. Protein abundance based on laser Intensity and smart gain: Medium. Scale bar: 20 μ m.

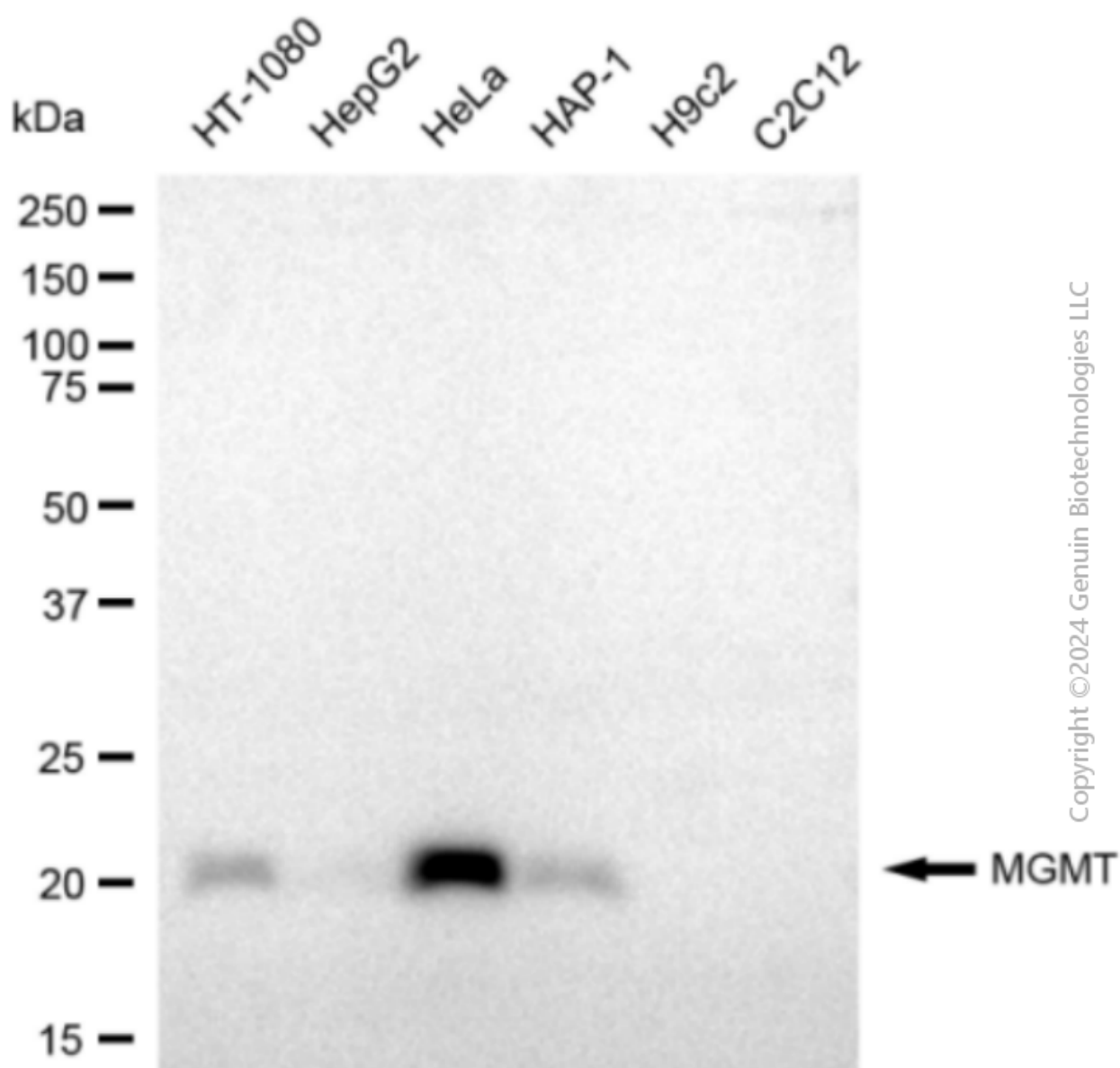
SUPPORT

SUPPORT@GENUINBIOTECH.COM
TEL: +1-540-855-7041

ORDERS

SALES@GENUINBIOTECH.COM
FAX: +1-540-855-7041

WWW.GENUINBIOTECH.COM



Western blotting analysis using anti-MGMT antibody (Cat#1683). Total cell lysates (30 μ g) from various cell lines were loaded and separated by SDS-PAGE. The blot was incubated with anti-MGMT antibody (Cat#1683, 1:5,000) and HRP-conjugated goat anti-rabbit secondary antibody (Cat#201, 1:20,000) respectively. Image was developed using FeQ™ ECL Substrate Kit (Cat#226).