

# Anti-Phospho-Smad5 (S463/465) Recombinant Rabbit Monoclonal Antibody



**Catalog #: 1687**

## Aliases

SMAD5; SMAD Family Member 5; JV5-1; MADH5; Mothers Against Decapentaplegic Homolog 5; DWFC; MAD, Mothers Against Decapentaplegic Homolog 5 (Drosophila); Mothers Against Decapentaplegic, Drosophila, Homolog Of, 5; SMAD, Mothers Against DPP Homolog 5 (Drosophila); MAD, Mothers Against Decapentaplegic Homolog 5; SMAD, Mothers Against DPP Homolog 5; SMA- And MAD-Related Protein 5; Mothers Against DPP Homolog 5; MAD Homolog 5; SMAD 5; HSmad5; Smad5; Dwfc

## Background

Gene Name: SMAD5

NCBI Gene Entry: [4090](#)

UniProt Entry: [Q99717](#)

## Application Information

Molecular Weight: Predicted, 52 kDa; observed, 58 kDa

Clonality: Rabbit monoclonal antibody

Clone ID: 23GB4075

Species Reactivity: Human, mouse, rat

Applications Tested: Western blotting (WB), flow cytometry (FCM), immunocytochemistry (IC)

## Immunogen

A synthesized peptide derived from human Phospho-Smad5 (S463/465)

## Isotype

Rabbit IgG

## Storage Buffer

Supplied in PBS (pH 7.4) containing 50% glycerol, and 0.02% sodium azide.

## Storage

Store at -20 °C for one year.

## Recommended Dilutions

Western Blotting (WB): 1:1,000-1:5,000

Flow Cytometry (FCM): 1:2,000

Immunocytochemistry (IC): 1:100-1:1,000

---

### SUPPORT

SUPPORT@GENUINBIOTECH.COM  
TEL: +1-540-855-7041

### ORDERS

SALES@GENUINBIOTECH.COM  
FAX: +1-540-855-7041

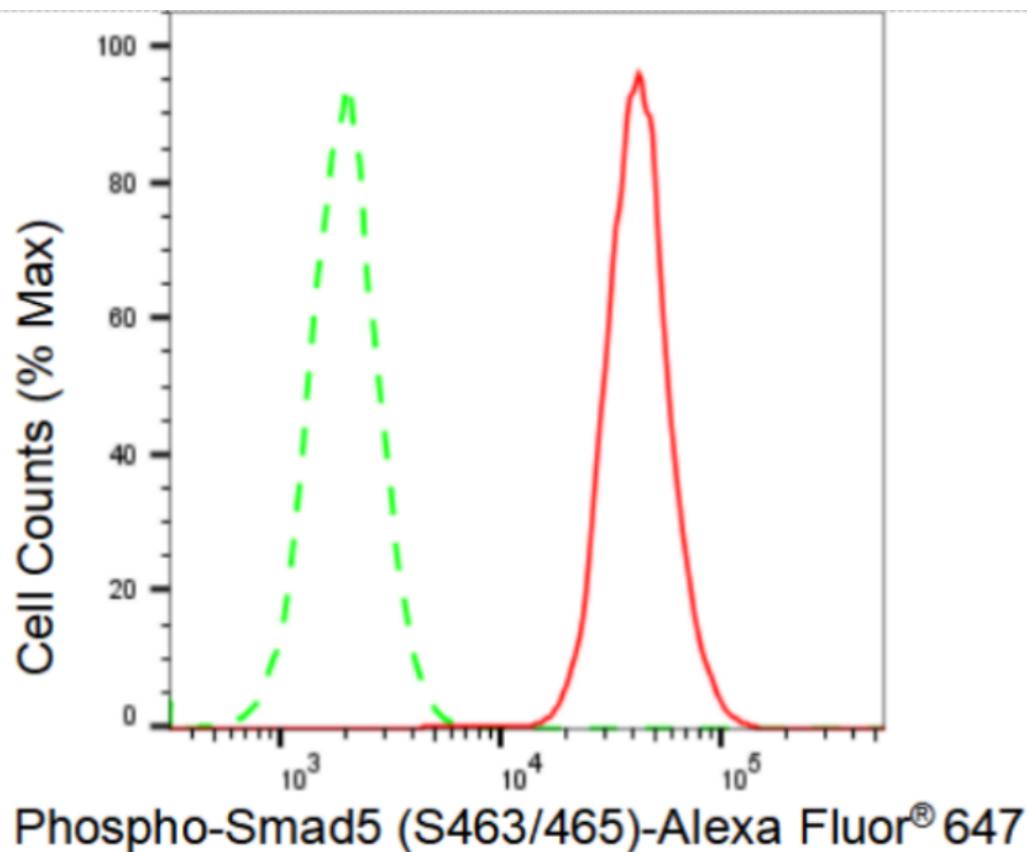
[WWW.GENUINBIOTECH.COM](http://WWW.GENUINBIOTECH.COM)

# Anti-Phospho-Smad5 (S463/465) Recombinant Rabbit Monoclonal Antibody

PAGE 2

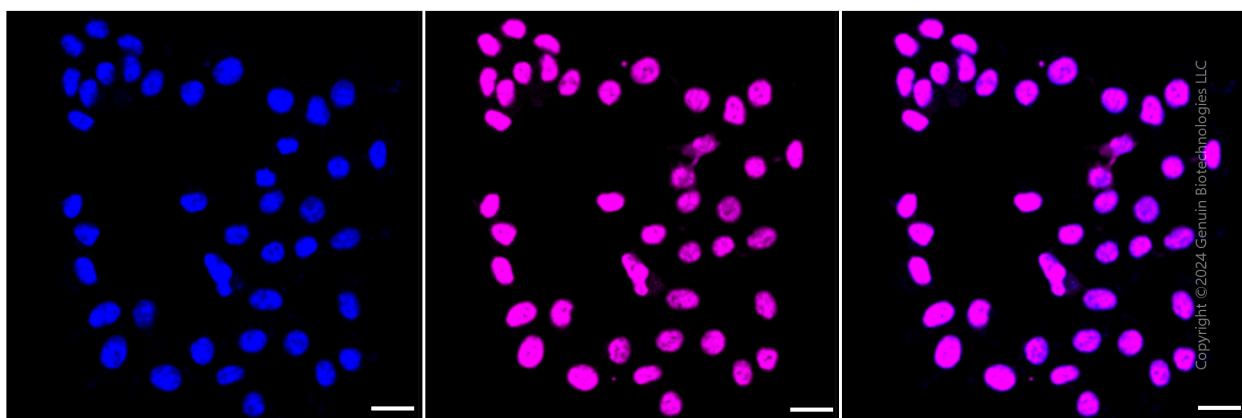
**Note:** This product is for research use only.

## Validation Data



Copyright ©2024 Genuin Biotechnologies LLC

Flow cytometric analysis of Phospho-Smad5 (S463/465) expression in HAP-1 cells using Phospho-Smad5 (S463/465) antibody (Cat#1687, 1:2,000). Green, isotype control; red, Phospho-Smad5 (S463/465).



Immunocytochemical staining of HAP-1 cells with Phospho-Smad5 (S463/465) antibody (Cat#1687, 1:1,000). Nuclei were stained blue with DAPI; phospho-Smad5 (S463/465) was stained

### SUPPORT

SUPPORT@GENUINBIOTECH.COM  
TEL: +1-540-855-7041

### ORDERS

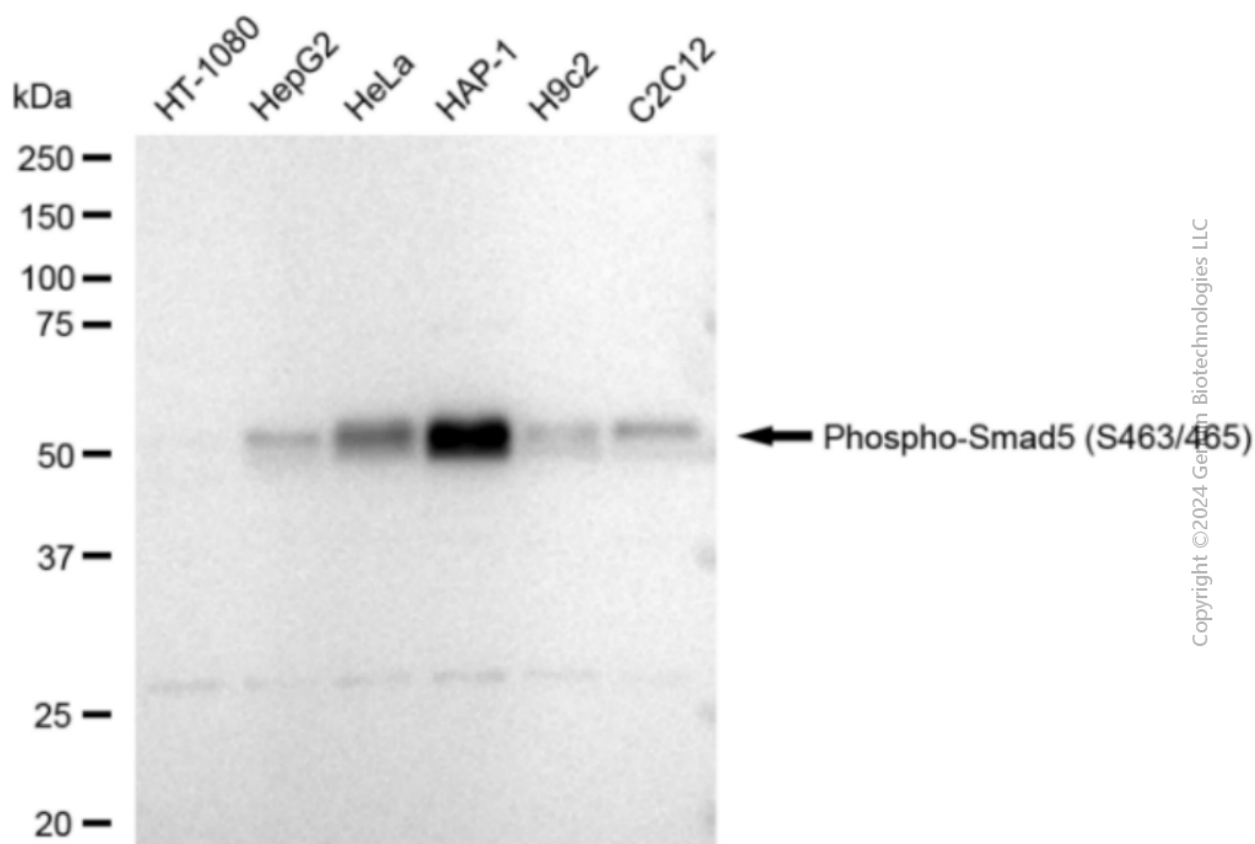
SALES@GENUINBIOTECH.COM  
FAX: +1-540-855-7041

WWW.GENUINBIOTECH.COM

## Anti-Phospho-Smad5 (S463/465) Recombinant Rabbit Monoclonal Antibody

PAGE 3

magenta with Alexa Fluor® 647. Images were taken using Leica stellaris 5. Protein abundance based on laser Intensity and smart gain: Medium. Scale bar: 20  $\mu$ m.



Copyright ©2024 Genin Biotechnologies LLC

Western blotting analysis using anti-Phospho-Smad5 (S463/465) antibody (Cat#1687). Total cell lysates (30  $\mu$ g) from various cell lines were loaded and separated by SDS-PAGE. The blot was incubated with anti-Phospho-Smad5 (S463/465) antibody (Cat#1687, 1:5,000) and HRP-conjugated goat anti-rabbit secondary antibody (Cat#201, 1:20,000) respectively. Image was developed using FeQ™ ECL Substrate Kit (Cat#226).

### SUPPORT

SUPPORT@GENUINBIOTECH.COM  
TEL: +1-540-855-7041

### ORDERS

SALES@GENUINBIOTECH.COM  
FAX: +1-540-855-7041

WWW.GENUINBIOTECH.COM