

# Anti-Phospho-AMPK alpha 2 (S345) Recombinant Rabbit Monoclonal Antibody



**Catalog #: 1691**

## Aliases

PRKAA2; Protein Kinase AMP-Activated Catalytic Subunit Alpha 2; AMPK; 5'-AMP-Activated Protein Kinase Catalytic Subunit Alpha-2; Protein Kinase, AMP-Activated, Alpha 2 Catalytic Subunit; Hydroxymethylglutaryl-CoA Reductase Kinase; Acetyl-CoA Carboxylase Kinase; AMPK Subunit Alpha-2; ACACA Kinase; HMGCR Kinase; EC 2.7.11.1; AMPKa2; AMPK2; PRKAA; 5'-AMP-Activated Protein Kinase, Catalytic Alpha-2 Chain; AMPK-Alpha-2 Chain; AMPK Alpha; EC 2.7.11.27; EC 2.7.11.31; EC 2.7.11.48; AMPKA2

## Background

Gene Name: PRKAA2

NCBI Gene Entry: [5563](#)

UniProt Entry: [P54646](#)

## Application Information

Molecular Weight: Predicted, 62 kDa; observed, 64 kDa

Clonality: Rabbit monoclonal antibody

Clone ID: 23GB4095

Species Reactivity: Human, mouse, rat

Applications Tested: Western blotting (WB), flow cytometry (FCM), immunocytochemistry (IC)

## Immunogen

A synthesized peptide derived from human AMPK alpha 2

## Isotype

Rabbit IgG

## Storage Buffer

Supplied in PBS (pH 7.4) containing 50% glycerol, and 0.02% sodium azide.

## Storage

Store at -20 °C for one year.

## Recommended Dilutions

Western Blotting (WB): 1:1,000-1:5,000

Flow Cytometry (FCM): 1:2,000

Immunocytochemistry (IC): 1:100-1:1,000

---

### SUPPORT

SUPPORT@GENUINBIOTECH.COM  
TEL: +1-540-855-7041

### ORDERS

SALES@GENUINBIOTECH.COM  
FAX: +1-540-855-7041

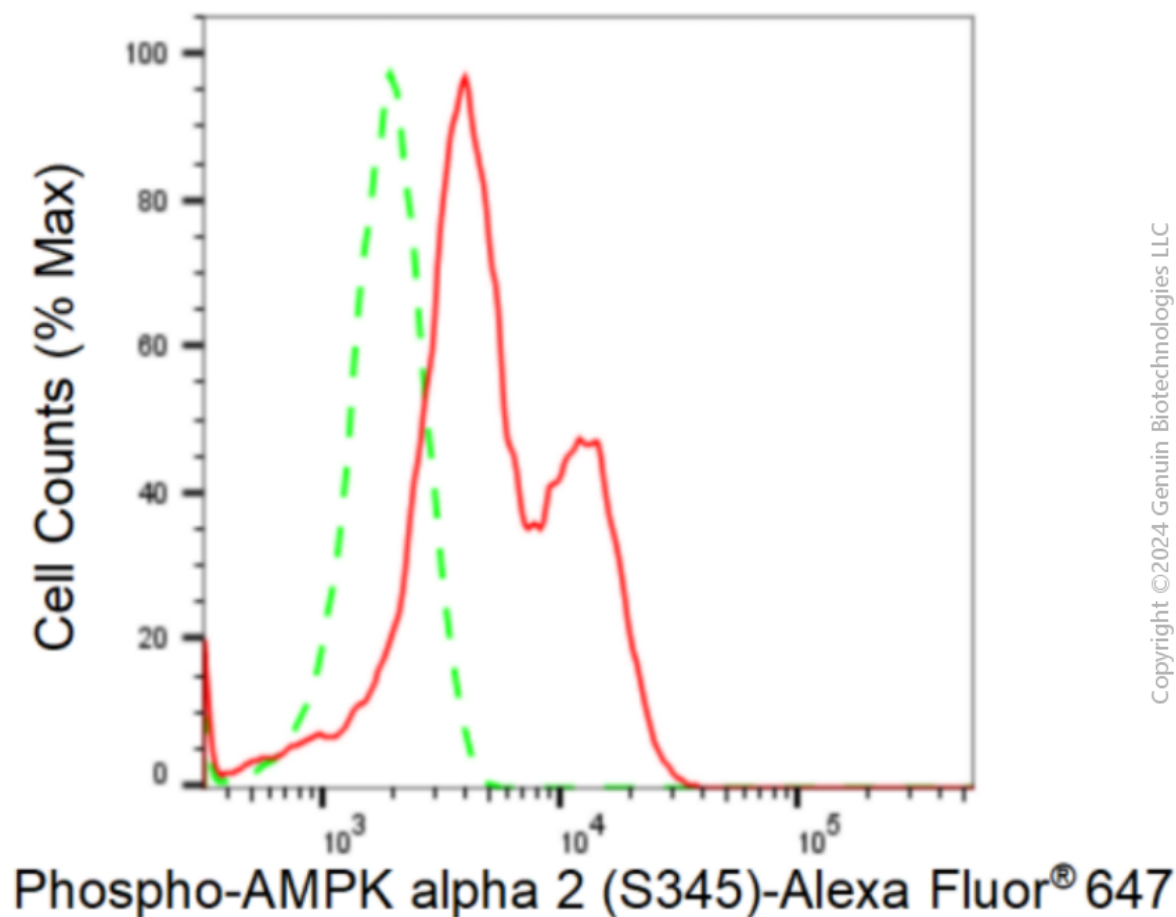
[WWW.GENUINBIOTECH.COM](http://WWW.GENUINBIOTECH.COM)

# Anti-Phospho-AMPK alpha 2 (S345) Recombinant Rabbit Monoclonal Antibody

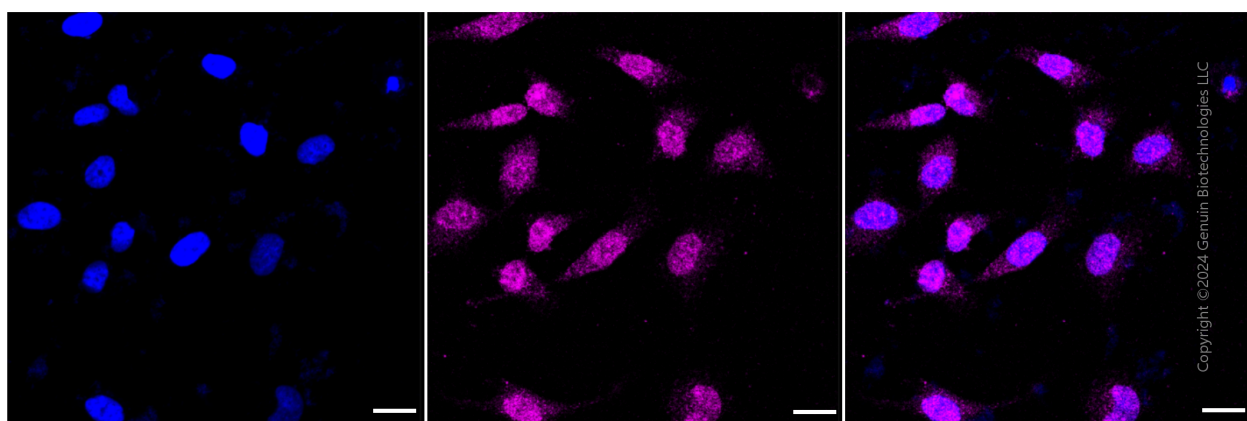
PAGE 2

**Note:** This product is for research use only.

## Validation Data



Flow cytometric analysis of Phospho-AMPK alpha 2 (S345) expression in HeLa cells using anti-Phospho-AMPK alpha 2 (S345) antibody (Cat#1691, 1:2,000). Green, isotype control; red, Phospho-AMPK alpha 2 (S345).



### SUPPORT

SUPPORT@GENUINBIOTECH.COM  
TEL: +1-540-855-7041

### ORDERS

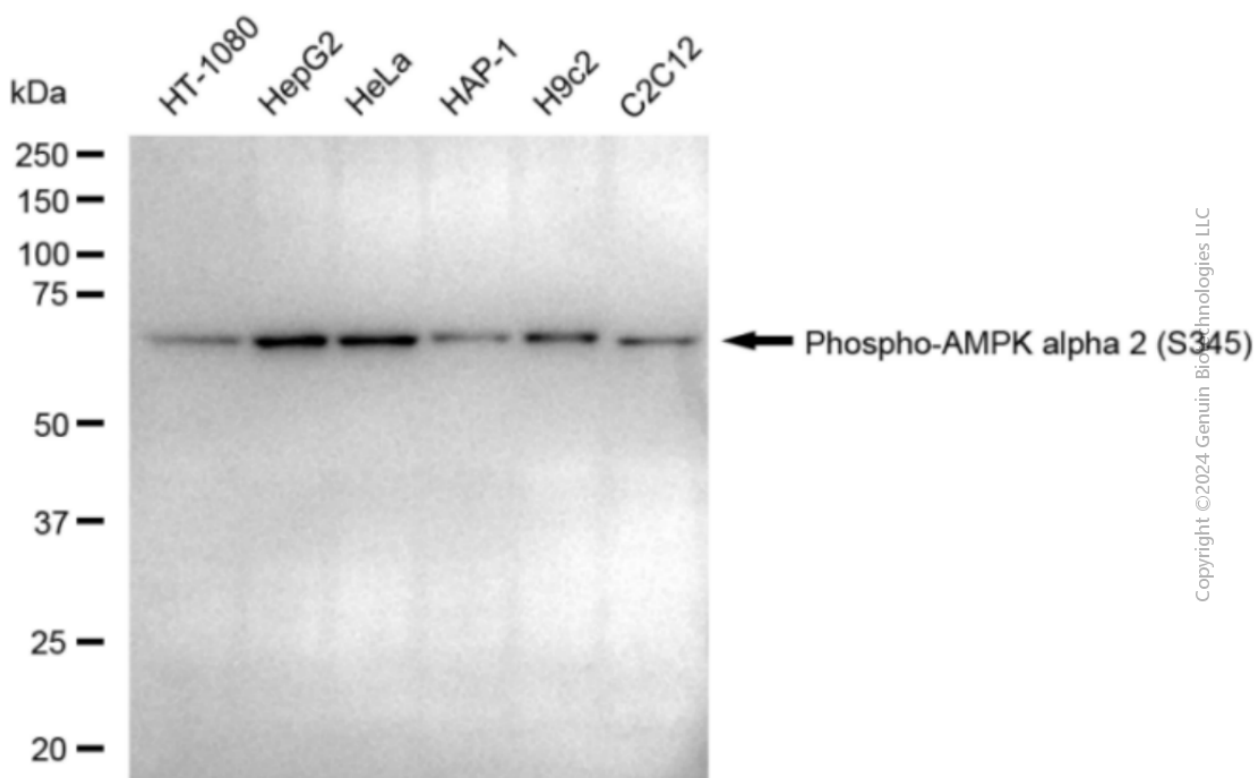
SALES@GENUINBIOTECH.COM  
FAX: +1-540-855-7041

WWW.GENUINBIOTECH.COM

## Anti-Phospho-AMPK alpha 2 (S345) Recombinant Rabbit Monoclonal Antibody

PAGE 3

Immunocytochemical staining of Hela cells with Phospho-AMPK alpha 2 (S345) antibody (Cat#1691, 1:1,000). Nuclei were stained blue with DAPI; Phospho-AMPK alpha 2 (S345) was stained magenta with Alexa Fluor® 647. Images were taken using Leica stellaris 5. Protein abundance based on laser Intensity and smart gain: Low. Scale bar: 20  $\mu$ m.



Copyright ©2024 Genuin Biotechnologies LLC

Western blotting analysis using anti-Phospho-AMPK alpha 2 (S345) antibody (Cat#1691). Total cell lysates (30  $\mu$ g) from various cell lines were loaded and separated by SDS-PAGE. The blot was incubated with anti-Phospho-AMPK alpha 2 (S345) antibody (Cat#1691, 1:5,000) and HRP-conjugated goat anti-rabbit secondary antibody (Cat#201, 1:20,000) respectively. Image was developed using FeQ™ ECL Substrate Kit (Cat#226).

### SUPPORT

SUPPORT@GENUINBIOTECH.COM  
TEL: +1-540-855-7041

### ORDERS

SALES@GENUINBIOTECH.COM  
FAX: +1-540-855-7041

WWW.GENUINBIOTECH.COM