

Anti-Phospho-RSK1 p90 (T573) Recombinant Rabbit Monoclonal Antibody



Catalog #: 1698

Aliases

RPS6KA1; Ribosomal Protein S6 Kinase A1; RSK1; MAPKAPK1; HU-1; MAP Kinase-Activated Protein Kinase 1a; 90 KDa Ribosomal Protein S6 Kinase 1; Ribosomal Protein S6 Kinase Alpha-1; MAPK-Activated Protein Kinase 1a; Ribosomal S6 Kinase 1; MAPKAP Kinase 1a; EC 2.7.11.1; MAPKAPK-1a; MAPKAPK1A; P90-RSK 1; P90RSK1; P90Rsk; P90S6K; RSK-1; DJ590P13.1 (Ribosomal Protein S6 Kinase, 90kD, Polypeptide 1); Ribosomal Protein S6 Kinase, 90kDa, Polypeptide 1; Ribosomal Protein S6 Kinase, 90kD, Polypeptide 1; S6K-Alpha 1; S6K-Alpha-1; EC 2.7.11; P90RSK; RSK

Background

Gene Name: RPS6KA1

NCBI Gene Entry: [6195](#)

UniProt Entry: [Q15418](#)

Application Information

Molecular Weight: Predicted, 83 kDa; observed, 83 kDa

Clonality: Rabbit monoclonal antibody

Clone ID: 23GB4130

Species Reactivity: Human, mouse, rat

Applications Tested: Western blotting (WB), flow cytometry (FCM), immunocytochemistry (IC)

Immunogen

A synthesized peptide derived from human Phospho-RSK1 p90 (T573)

Isotype

Rabbit IgG

Storage Buffer

Supplied in PBS (pH 7.4) containing 50% glycerol, and 0.02% sodium azide.

Storage

Store at -20 °C for one year.

Recommended Dilutions

Western Blotting (WB): 1:1,000-1:5,000

Flow Cytometry (FCM): 1:2,000

SUPPORT

SUPPORT@GENUINBIOTECH.COM
TEL: +1-540-855-7041

ORDERS

SALES@GENUINBIOTECH.COM
FAX: +1-540-855-7041

WWW.GENUINBIOTECH.COM

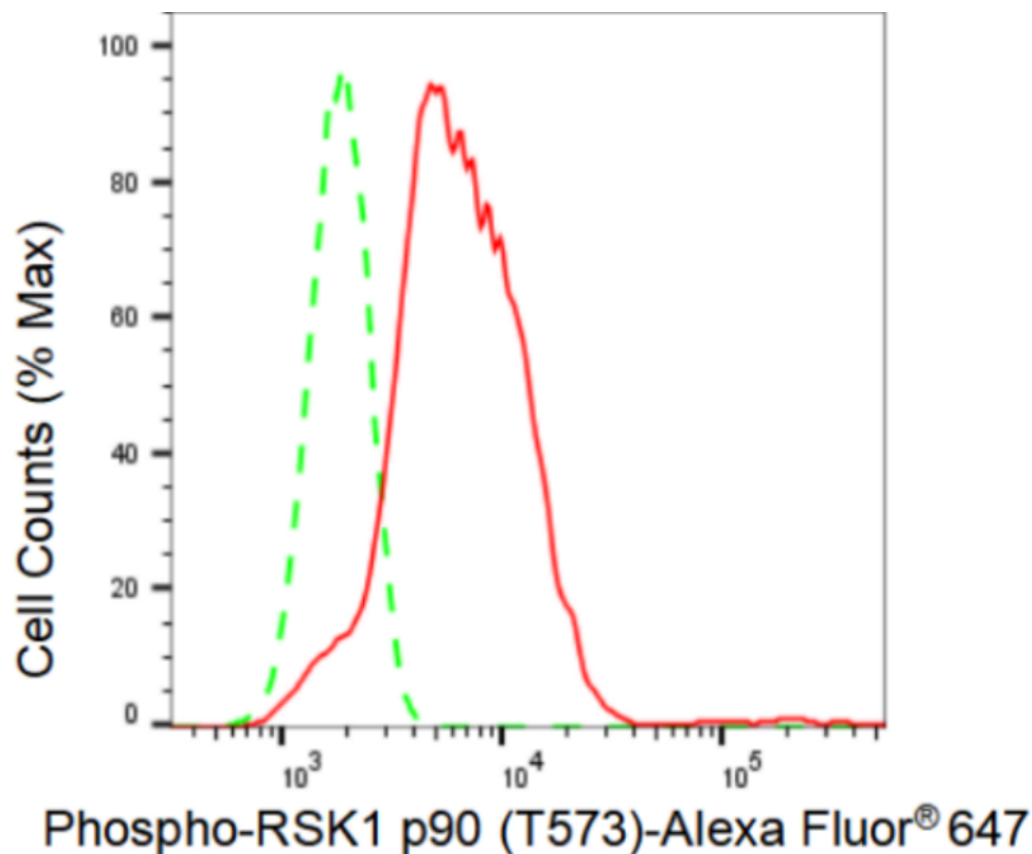
Anti-Phospho-RSK1 p90 (T573) Recombinant Rabbit Monoclonal Antibody

PAGE 2

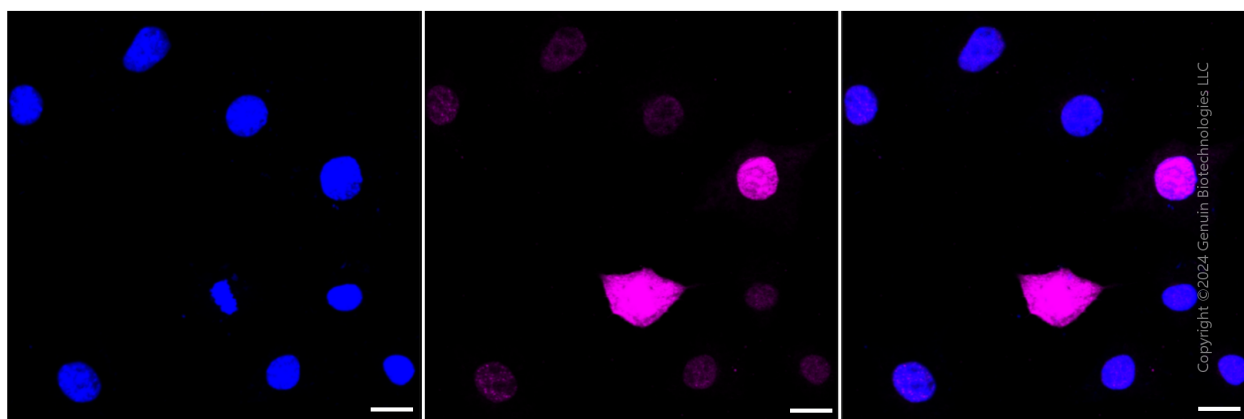
Immunocytochemistry (IC): 1:100-1:1,000

Note: This product is for research use only.

Validation Data



Flow cytometric analysis of Phospho-RSK1 p90 (T573) expression in C2C12 cells using Phospho-RSK1 p90 (T573) antibody (Cat#1698, 1:2,000). Green, isotype control; red, Phospho-RSK1 p90 (T573).



SUPPORT

SUPPORT@GENUINBIOTECH.COM
TEL: +1-540-855-7041

ORDERS

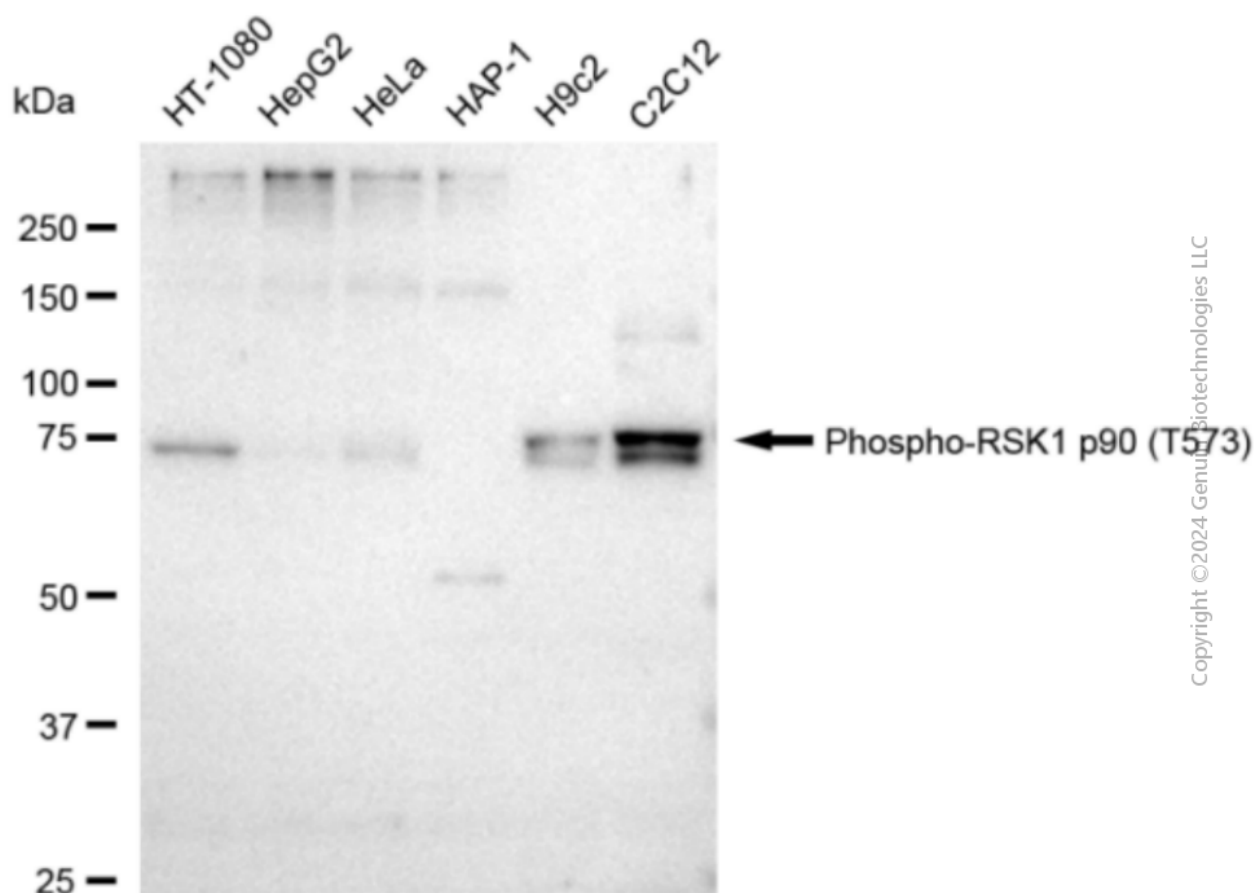
SALES@GENUINBIOTECH.COM
FAX: +1-540-855-7041

WWW.GENUINBIOTECH.COM

Anti-Phospho-RSK1 p90 (T573) Recombinant Rabbit Monoclonal Antibody

PAGE 3

Immunocytochemical staining of C2C12 cells with Phospho-RSK1 p90 (T573) antibody (Cat#1698, 1:1,000). Nuclei were stained blue with DAPI; Phospho-RSK1 p90 (T573) was stained magenta with Alexa Fluor® 647. Images were taken using Leica stellaris 5. Protein abundance based on laser Intensity and smart gain: Medium. Scale bar: 20 μ m.



Western blotting analysis using anti-Phospho-RSK1 p90 (T573) antibody (Cat#1698). Total cell lysates (30 μ g) from various cell lines were loaded and separated by SDS-PAGE. The blot was incubated with anti-Phospho-RSK1 p90 (T573) antibody (Cat#1698, 1:5,000) and HRP-conjugated goat anti-rabbit secondary antibody (Cat#201, 1:20,000) respectively. Image was developed using FeQ™ ECL Substrate Kit (Cat#226).

SUPPORT

SUPPORT@GENUINBIOTECH.COM
TEL: +1-540-855-7041

ORDERS

SALES@GENUINBIOTECH.COM
FAX: +1-540-855-7041

WWW.GENUINBIOTECH.COM