

Anti-Phospho-Smad1/5/9 (S463/S465/S467) Recombinant Rabbit Monoclonal Antibody



Catalog #: 1704

Aliases

SMAD1; SMAD Family Member 1; MADR1; JV4-1; MADH1; Mothers Against Decapentaplegic Homolog 1; Mothers Against DPP Homolog 1; Mad-Related Protein 1; BSP-1; BSP1; MAD, Mothers Against Decapentaplegic Homolog 1 (Drosophila); Transforming Growth Factor-Beta Signaling Protein 1; Transforming Growth Factor-Beta-Signaling Protein 1; SMAD, Mothers Against DPP Homolog 1 (Drosophila); MAD, Mothers Against Decapentaplegic Homolog 1; SMAD, Mothers Against DPP Homolog 1; TGF-Beta Signaling Protein 1; MAD Homolog 1; SMAD 1; HSMAD1; Smad1; JV41; SMAD5; SMAD Family Member 5; JV5-1; MADH5; Mothers Against Decapentaplegic Homolog 5; DWFC; MAD, Mothers Against Decapentaplegic Homolog 5 (Drosophila); Mothers Against Decapentaplegic, Drosophila, Homolog Of, 5; SMAD, Mothers Against DPP Homolog 5 (Drosophila); MAD, Mothers Against Decapentaplegic Homolog 5; SMAD, Mothers Against DPP Homolog 5; SMA- And MAD-Related Protein 5; Mothers Against DPP Homolog 5; MAD Homolog 5; SMAD 5; HSmad5; Smad5; Dwfc; SMAD9; SMAD Family Member 9; SMAD8; SMAD8/9; MADH6; MADH9; Mothers Against Decapentaplegic Homolog 9; MAD Homolog 9; MAD, Mothers Against Decapentaplegic Homolog 9 (Drosophila); Mothers Against Decapentaplegic, Drosophila, Homolog Of, 9; SMAD, Mothers Against DPP Homolog 9 (Drosophila); SMAD, Mothers Against DPP Homolog 9; Mothers Against DPP Homolog 9; SMAD8A; SMAD8B; SMAD 9; Madh6; Smad9; PPH2

Background

Gene Name: SMAD1/5/9

NCBI Gene Entry: [4086/4090/4093](#)

UniProt Entry: [Q15797/Q99717/O15198](#)

Application Information

Molecular Weight: Predicted, 52 kDa; observed, 52 kDa

Clonality: Rabbit monoclonal antibody

Clone ID: 23GB4155

Species Reactivity: Human, mouse, rat

Applications Tested: Western blotting (WB), flow cytometry (FCM), immunocytochemistry (IC)

Immunogen

A synthesized peptide derived from human Phospho-Smad1/5/9(S463/S465/S467)

Isotype

Rabbit IgG

SUPPORT

SUPPORT@GENUINBIOTECH.COM
TEL: +1-540-855-7041

ORDERS

SALES@GENUINBIOTECH.COM
FAX: +1-540-855-7041

WWW.GENUINBIOTECH.COM

Anti-Phospho-Smad1/5/9 (S463/S465/S467) Recombinant Rabbit Monoclonal Antibody

PAGE 2

Storage Buffer

Supplied in PBS (pH 7.4) containing 50% glycerol, and 0.02% sodium azide.

Storage

Store at -20 °C for one year.

Recommended Dilutions

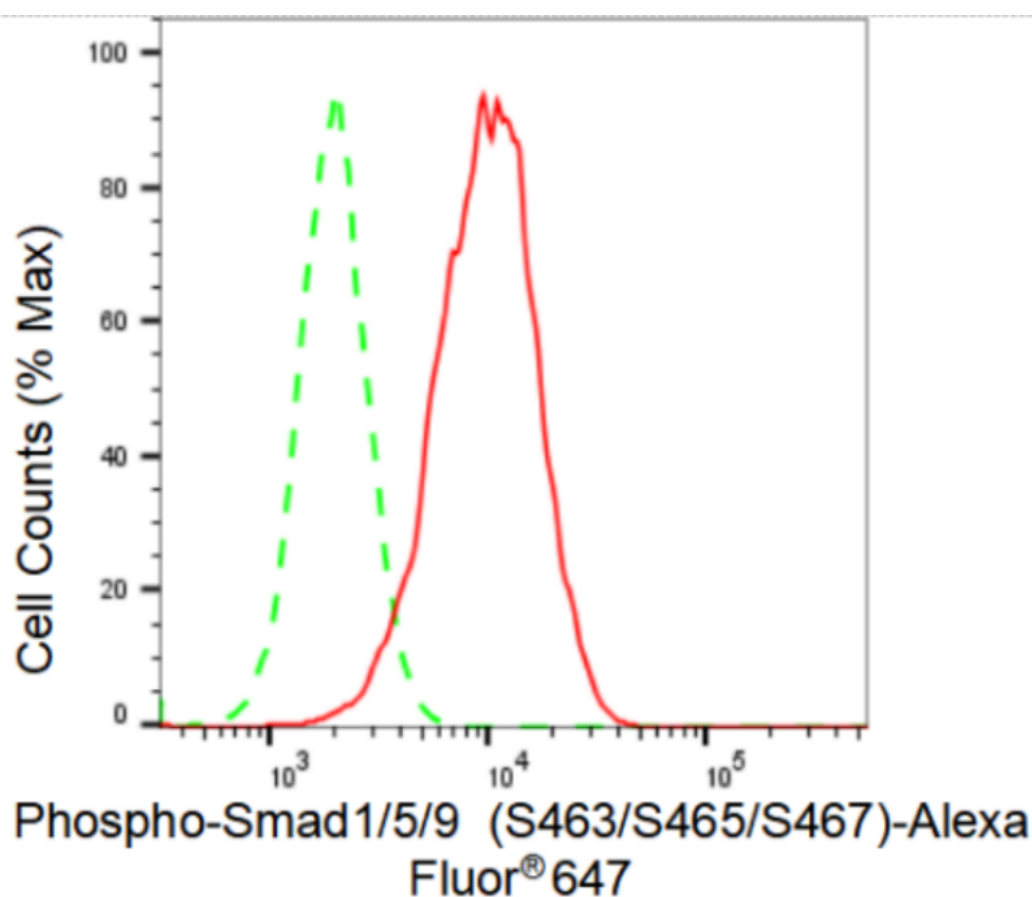
Western Blotting (WB): 1:1,000-1:5,000

Flow Cytometry (FCM): 1:2,000

Immunocytochemistry (IC): 1:100-1:1,000

Note: This product is for research use only.

Validation Data



Flow cytometric analysis of Phospho-Smad1/5/9 (S463/S465/S467) expression in HAP-1 cells using Phospho-Smad1/5/9 (S463/S465/S467) antibody (Cat#1704, 1:2,000). Green, isotype control; red, Phospho-Smad1/5/9 (S463/S465/S467).

SUPPORT

SUPPORT@GENUINBIOTECH.COM
TEL: +1-540-855-7041

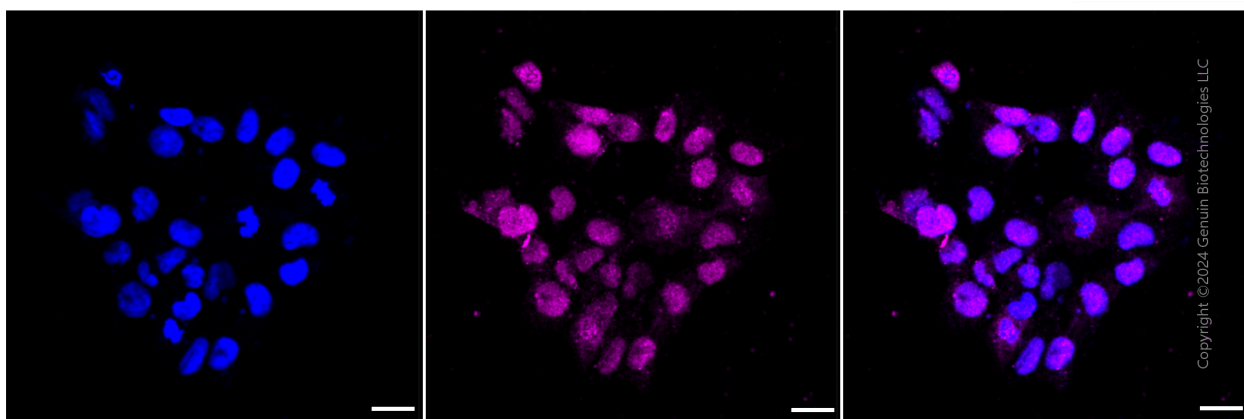
ORDERS

SALES@GENUINBIOTECH.COM
FAX: +1-540-855-7041

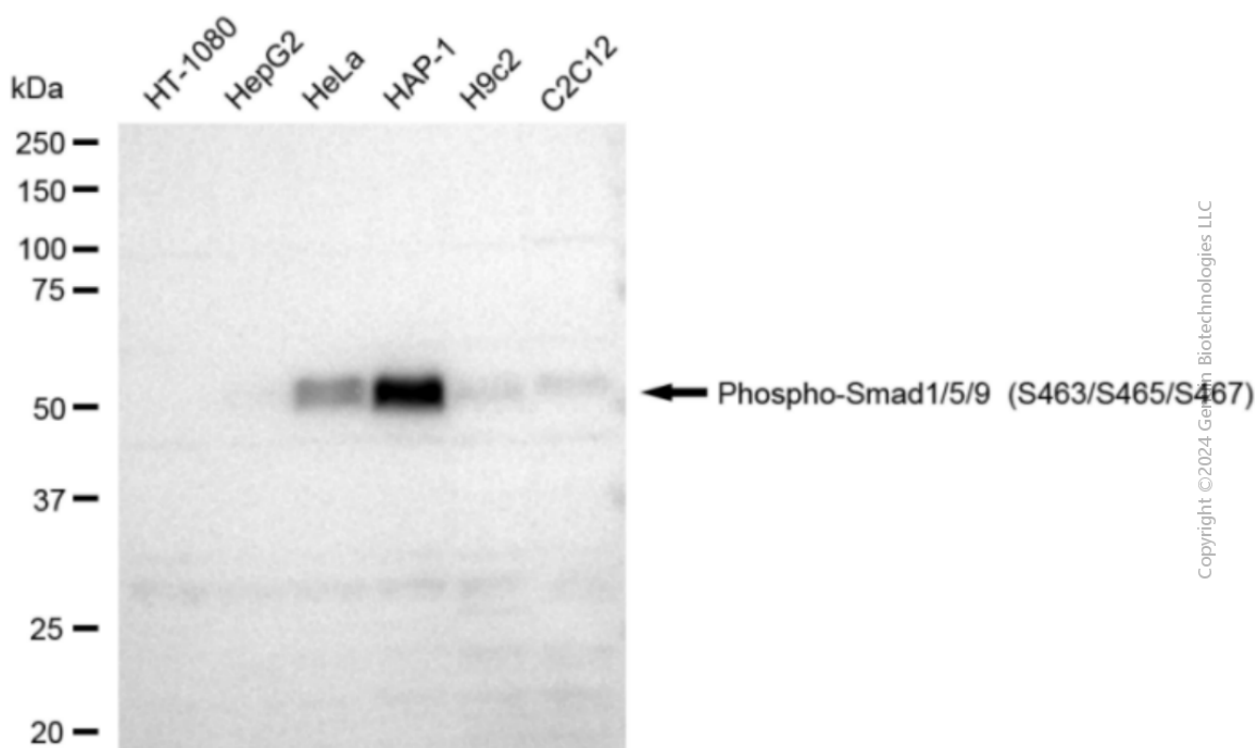
WWW.GENUINBIOTECH.COM

Anti-Phospho-Smad1/5/9 (S463/S465/S467) Recombinant Rabbit Monoclonal Antibody

PAGE 3



Immunocytochemical staining of HAP-1 cells with Phospho-Smad1/5/9 (S463/S465/S467) antibody (Cat#1704, 1:1,000). Nuclei were stained blue with DAPI; Phospho-Smad1/5/9 (S463/S465/S467) was stained magenta with Alexa Fluor® 647. Images were taken using Leica stellaris 5. Protein abundance based on laser Intensity and smart gain: Medium. Scale bar: 20 µm.



Western blotting analysis using anti-Phospho-Smad1/5/9 (S463/S465/S467) antibody (Cat#1704). Total cell lysates (30 µg) from various cell lines were loaded and separated by SDS-PAGE. The blot was incubated with anti-Phospho-Smad1/5/9 (S463/S465/S467) antibody (Cat#1704, 1:5,000) and HRP-conjugated goat anti-rabbit secondary antibody (Cat#201, 1:20,000) respectively. Image was developed using FeQ™ ECL Substrate Kit (Cat#226).

SUPPORT

SUPPORT@GENUINBIOTECH.COM
TEL: +1-540-855-7041

ORDERS

SALES@GENUINBIOTECH.COM
FAX: +1-540-855-7041

WWW.GENUINBIOTECH.COM