

Anti-SMARCA5 Recombinant Rabbit Monoclonal Antibody



Catalog #: 1705

Aliases

SMARCA5; SWI/SNF Related, Matrix Associated, Actin Dependent Regulator Of Chromatin, Subfamily A, Member 5; HSNF2H; HISWI; ISWI; SWI/SNF-Related Matrix-Associated Actin-Dependent Regulator Of Chromatin Subfamily A Member 5; SWI/SNF-Related Matrix-Associated Actin-Dependent Regulator Of Chromatin A5; Sucrose Nonfermenting Protein 2 Homolog; WCRF135; SNF2H; Sucrose Nonfermenting-Like 5; EC 3.6.4.-; EC 3.6.1

Background

Gene Name: SMARCA5

NCBI Gene Entry: [8467](#)

UniProt Entry: [O60264](#)

Application Information

Molecular Weight: Predicted, 122 kDa; observed, 122 kDa

Clonality: Rabbit monoclonal antibody

Clone ID: 23GB4160

Species Reactivity: Human, mouse, rat

Applications Tested: Western blotting (WB), flow cytometry (FCM), immunocytochemistry (IC)

Immunogen

A synthesized peptide derived from human SNF2H

Isotype

Rabbit IgG

Storage Buffer

Supplied in PBS (pH 7.4) containing 50% glycerol, and 0.02% sodium azide.

Storage

Store at -20 °C for one year.

Recommended Dilutions

Western Blotting (WB): 1:1,000-1:5,000

Flow Cytometry (FCM): 1:2,000

Immunocytochemistry (IC): 1:100-1:1,000

SUPPORT

SUPPORT@GENUINBIOTECH.COM
TEL: +1-540-855-7041

ORDERS

SALES@GENUINBIOTECH.COM
FAX: +1-540-855-7041

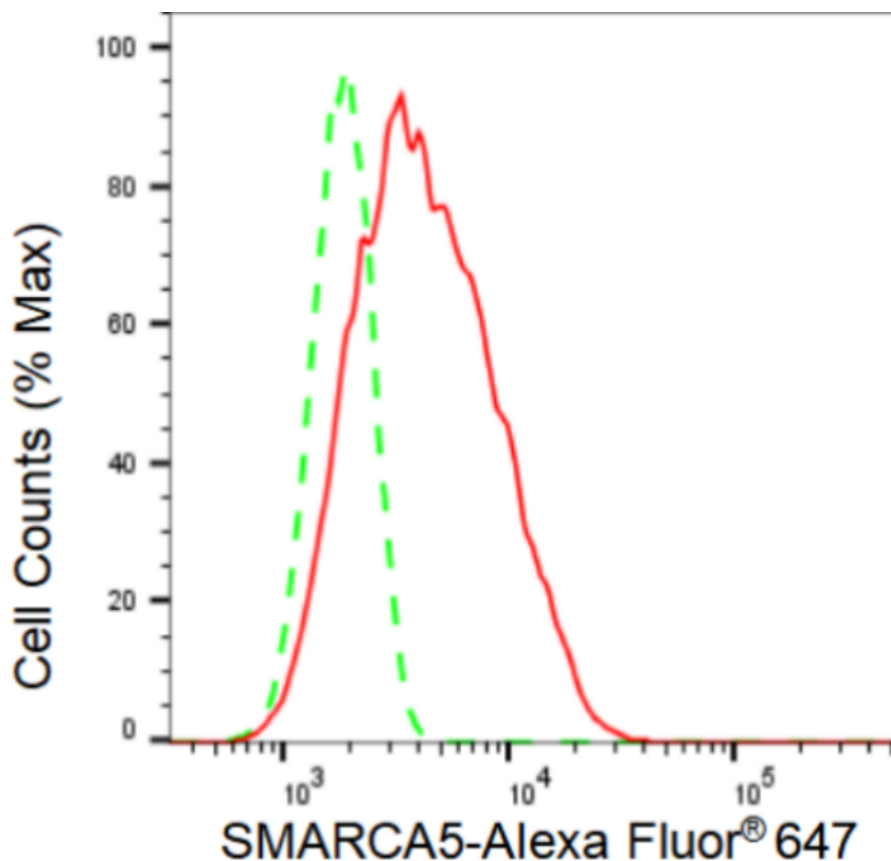
WWW.GENUINBIOTECH.COM

Anti-SMARCA5 Recombinant Rabbit Monoclonal Antibody

PAGE 2

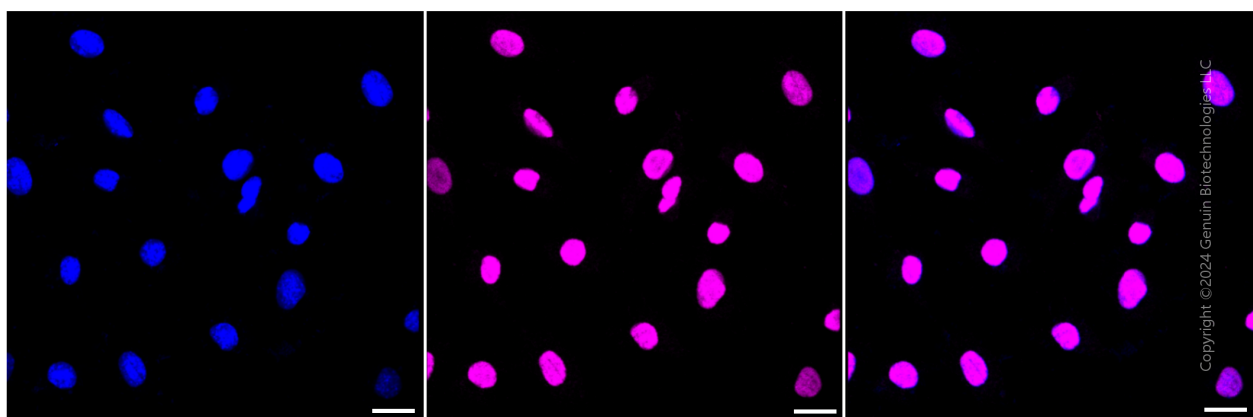
Note: This product is for research use only.

Validation Data



Copyright ©2024 Genuin Biotechnologies LLC

Flow cytometric analysis of SMARCA5 expression in C2C12 cells using SMARCA5 antibody (Cat#1705, 1:2000). Green, isotype control; red, SMARCA5.



Copyright ©2024 Genuin Biotechnologies LLC

SUPPORT

SUPPORT@GENUINBIOTECH.COM
TEL: +1-540-855-7041

ORDERS

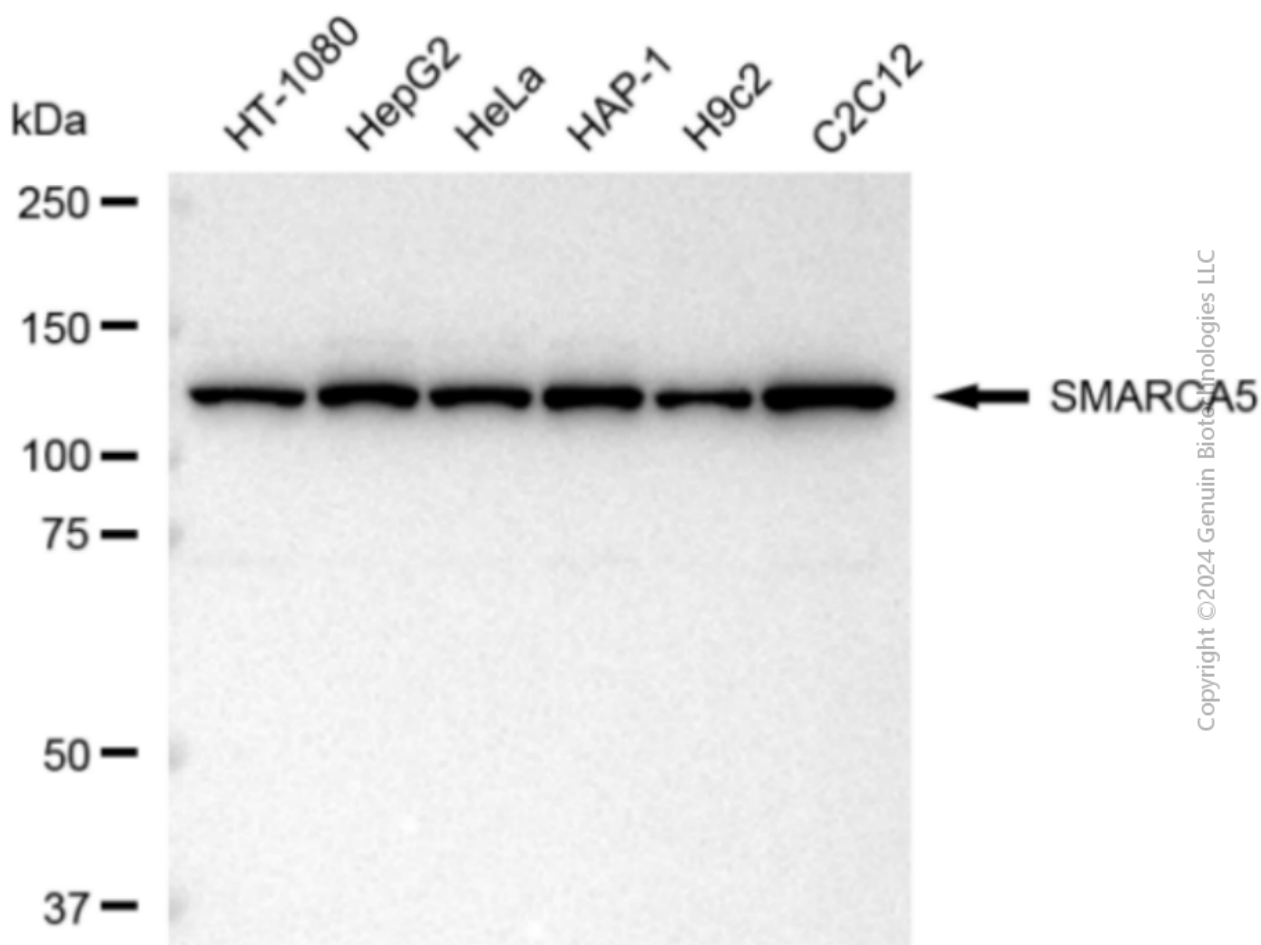
SALES@GENUINBIOTECH.COM
FAX: +1-540-855-7041

WWW.GENUINBIOTECH.COM

Anti-SMARCA5 Recombinant Rabbit Monoclonal Antibody

PAGE 3

gain: Medium. Scale bar: 20 μ m.



Western blotting analysis using anti-SMARCA5 antibody (Cat#1705). Total cell lysates (30 μ g) from various cell lines were loaded and separated by SDS-PAGE. The blot was incubated with anti-SMARCA5 antibody (Cat#1705, 1:5,000) and HRP-conjugated goat anti-rabbit secondary antibody (Cat#201, 1:20,000) respectively. Image was developed using FeQ™ ECL Substrate Kit (Cat#226).

SUPPORT

SUPPORT@GENUINBIOTECH.COM
TEL: +1-540-855-7041

ORDERS

SALES@GENUINBIOTECH.COM
FAX: +1-540-855-7041

WWW.GENUINBIOTECH.COM