

Anti-STAT4 Recombinant Rabbit Monoclonal Antibody



Catalog #: 1716

Aliases

STAT4; Signal Transducer And Activator Of Transcription 4; SLEB11; DPMC

Background

Gene Name: STAT4

NCBI Gene Entry: [6775](#)

UniProt Entry: [Q14765](#)

Application Information

Molecular Weight: Predicted, 86 kDa; observed, 75 kDa

Clonality: Rabbit monoclonal antibody

Clone ID: 23GB4210

Species Reactivity: Human

Applications Tested: Western blotting (WB), flow cytometry (FCM), immunocytochemistry (IC)

Immunogen

A synthesized peptide derived from human STAT4

Isotype

Rabbit IgG

Storage Buffer

Supplied in PBS (pH 7.4) containing 50% glycerol, and 0.02% sodium azide.

Storage

Store at -20 °C for one year.

Recommended Dilutions

Western Blotting (WB): 1:1,000-1:5,000

Flow Cytometry (FCM): 1:2,000

Immunocytochemistry (IC): 1:100-1:1,000

Note: This product is for research use only.

Validation Data

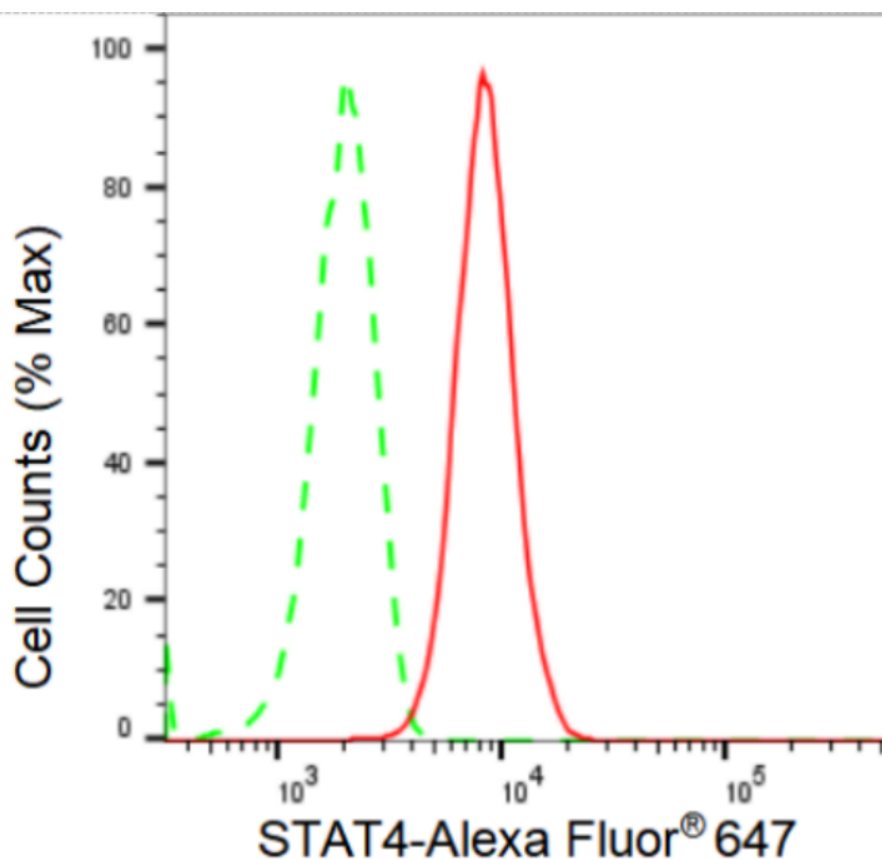
SUPPORT

SUPPORT@GENUINBIOTECH.COM
TEL: +1-540-855-7041

ORDERS

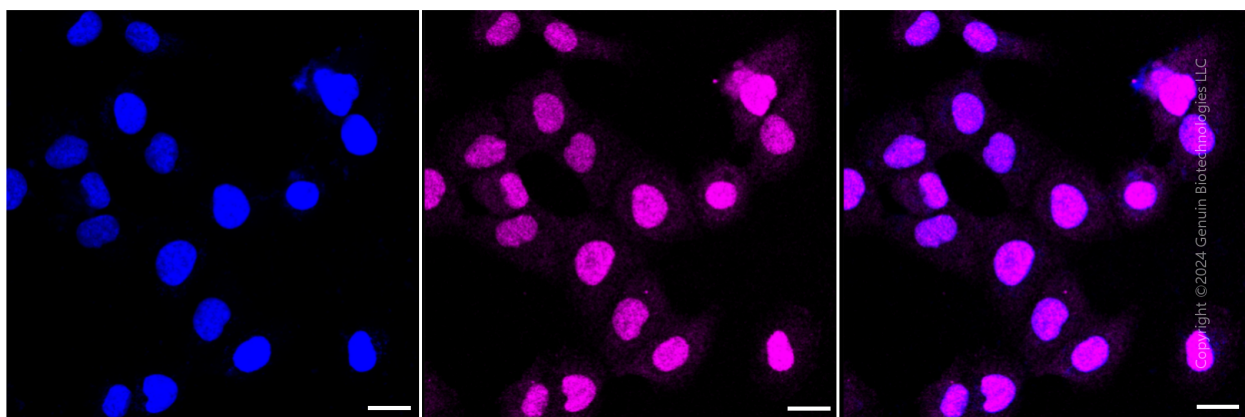
SALES@GENUINBIOTECH.COM
FAX: +1-540-855-7041

WWW.GENUINBIOTECH.COM



Copyright ©2024 Genuin Biotechnologies LLC

Flow cytometric analysis of STAT4 expression in HT-1080 cells using STAT4 antibody (Cat#1716, 1:2,000). Green, isotype control; red, STAT4.



Copyright ©2024 Genuin Biotechnologies LLC

Immunocytochemical staining of HT-1080 cells with STAT4 antibody (Cat#1716, 1:1,000). Nuclei were stained blue with DAPI; STAT4 was stained magenta with Alexa Fluor® 647. Images were taken using Leica stellaris 5. Protein abundance based on laser Intensity and smart gain: Medium. Scale bar: 20 μ m.

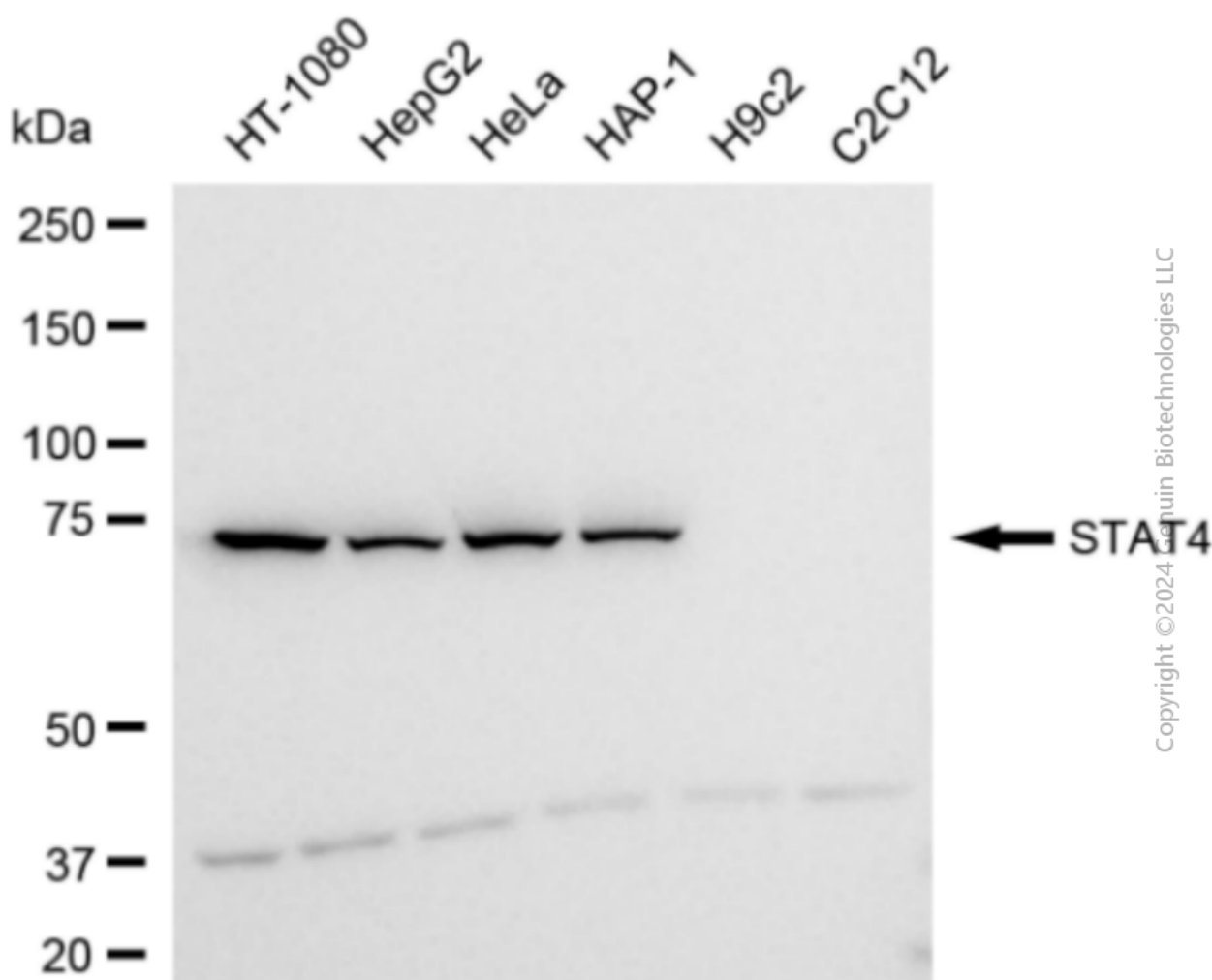
SUPPORT

SUPPORT@GENUINBIOTECH.COM
TEL: +1-540-855-7041

ORDERS

SALES@GENUINBIOTECH.COM
FAX: +1-540-855-7041

WWW.GENUINBIOTECH.COM



Western blotting analysis using anti-STAT4 antibody (Cat#1716). Total cell lysates (30 μ g) from various cell lines were loaded and separated by SDS-PAGE. The blot was incubated with anti-STAT4 antibody (Cat#1716, 1:5,000) and HRP-conjugated goat anti-rabbit secondary antibody (Cat#201, 1:20,000) respectively. Image was developed using FeQTM ECL Substrate Kit (Cat#226).