

# Anti-ASH2L Recombinant Rabbit Monoclonal Antibody



**Catalog #: 1732**

## Aliases

ASH2L; ASH2 Like, Histone Lysine Methyltransferase Complex Subunit; ASH2L2; ASH2L1; ASH2; Set1/Ash2 Histone Methyltransferase Complex Subunit ASH2; ASH2-Like Protein; Bre2; ASH2 Like Histone Lysine Methyltransferase Complex Subunit; Ash2 (Antibodysent, Small, Or Homeotic)-Like (Drosophila); Ash2 (Antibodysent, Small, Or Homeotic)-Like; BRE2

## Background

Gene Name: ASH2L

NCBI Gene Entry: [9070](#)

UniProt Entry: [Q9UBL3](#)

## Application Information

Molecular Weight: Predicted, 69 kDa; observed, 69 kDa

Clonality: Rabbit monoclonal antibody

Clone ID: 23GB1485

Species Reactivity: Human, mouse, rat

Applications Tested: Western blotting (WB), flow cytometry (FCM), immunocytochemistry (IC)

## Immunogen

A synthesized peptide derived from human ASH2L

## Isotype

Rabbit IgG

## Storage Buffer

Supplied in PBS (pH 7.4) containing 50% glycerol, and 0.02% sodium azide.

## Storage

Store at -20 °C for one year.

## Recommended Dilutions

Western Blotting (WB): 1:1,000-1:5,000

Flow Cytometry (FCM): 1:2,000

Immunocytochemistry (IC): 1:100-1:1,000

---

### SUPPORT

SUPPORT@GENUINBIOTECH.COM  
TEL: +1-540-855-7041

### ORDERS

SALES@GENUINBIOTECH.COM  
FAX: +1-540-855-7041

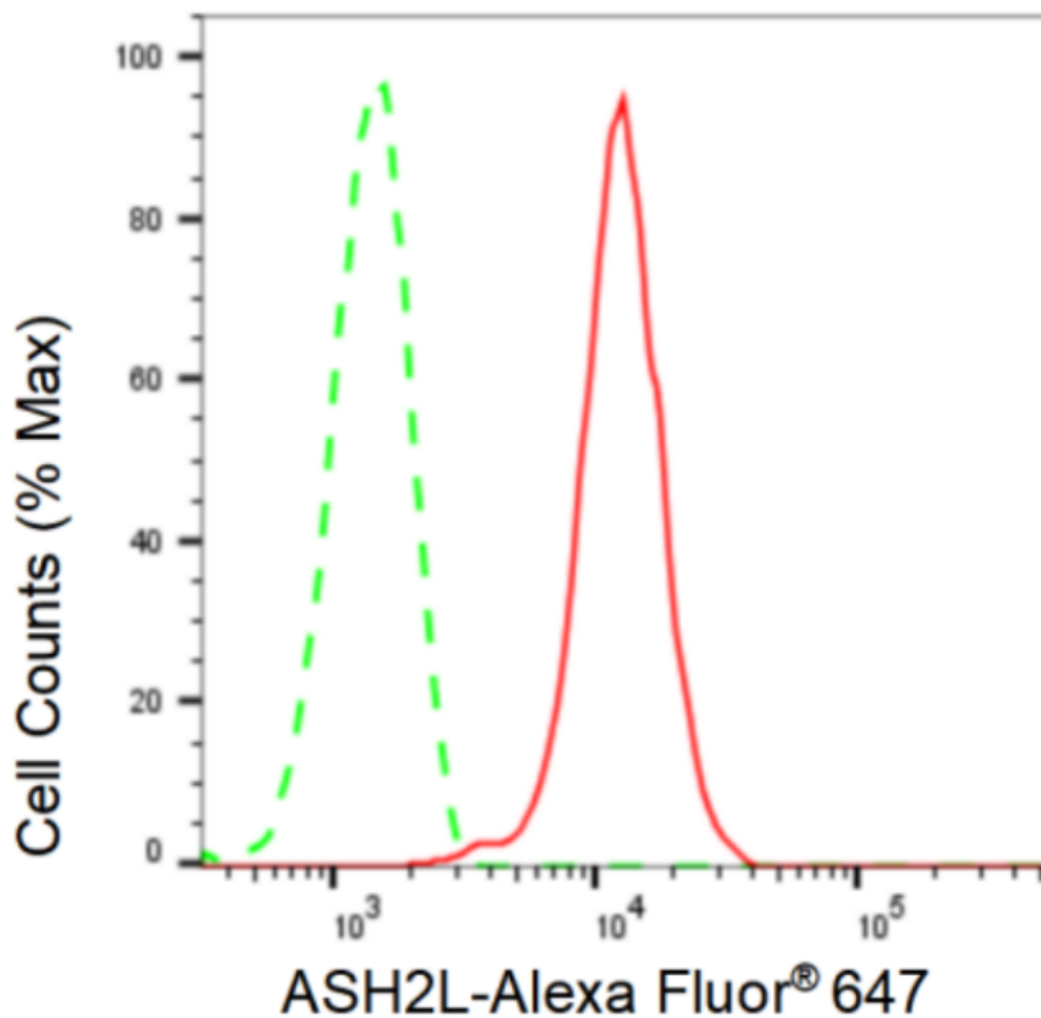
[WWW.GENUINBIOTECH.COM](http://WWW.GENUINBIOTECH.COM)

# Anti-ASH2L Recombinant Rabbit Monoclonal Antibody

PAGE 2

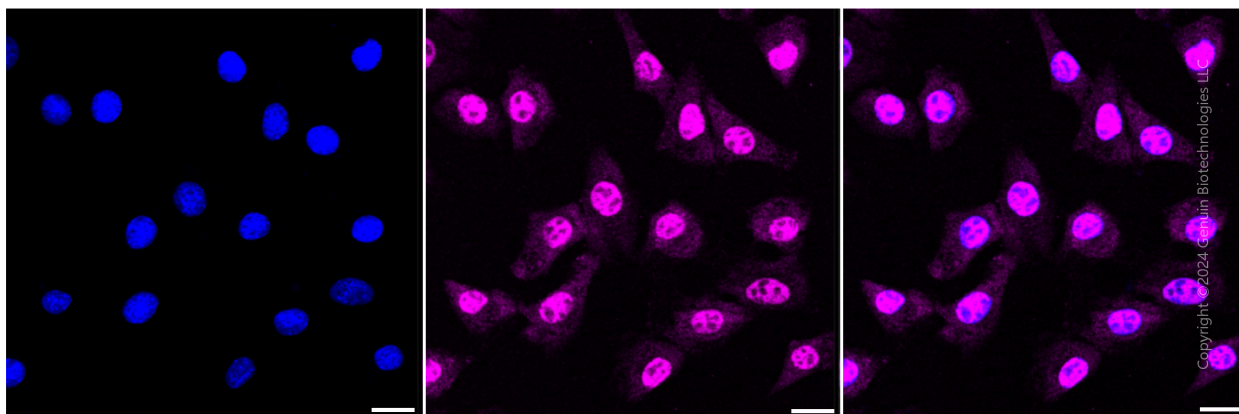
**Note:** This product is for research use only.

## Validation Data



Copyright ©2024 Genuin Biotechnologies LLC

Flow cytometric analysis of ASH2L expression in C2C12 cells using ASH2L antibody (Cat#1732, 1:2,000). Green, isotype control; red, ASH2L.



Copyright ©2024 Genuin Biotechnologies LLC

### SUPPORT

SUPPORT@GENUINBIOTECH.COM  
TEL: +1-540-855-7041

### ORDERS

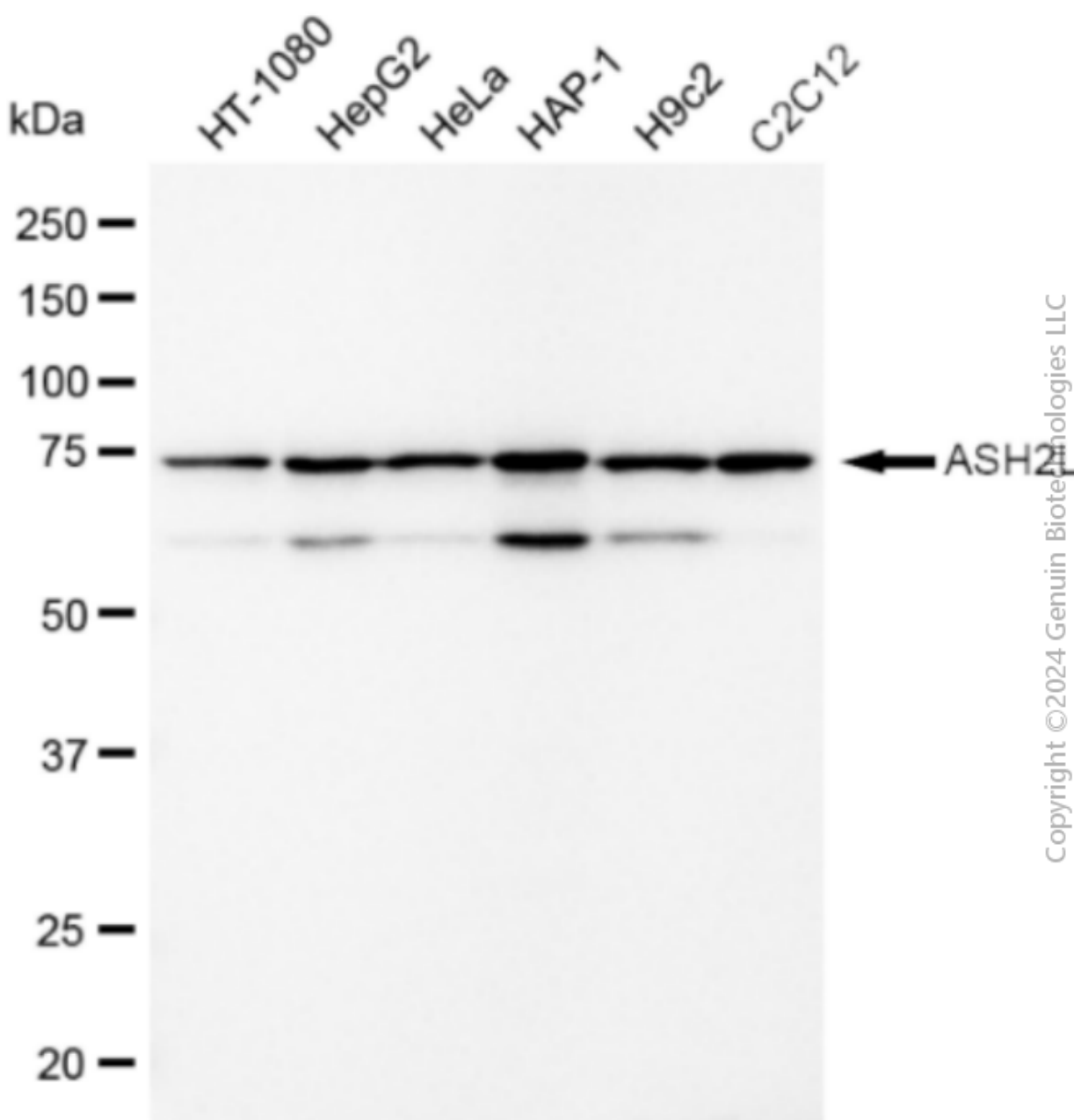
SALES@GENUINBIOTECH.COM  
FAX: +1-540-855-7041

WWW.GENUINBIOTECH.COM

## Anti-ASH2L Recombinant Rabbit Monoclonal Antibody

PAGE 3

Immunocytochemical staining of C2C12 cells with ASH2L antibody (Cat#1732, 1:1,000). Nuclei were stained blue with DAPI; ASH2L was stained magenta with Alexa Fluor® 647. Images were taken using Leica stellaris 5. Protein abundance based on laser Intensity and smart gain: Medium. Scale bar: 20  $\mu$ m.



Western blotting analysis using anti-ASH2L antibody (Cat#1732). Total cell lysates (30  $\mu$ g) from various cell lines were loaded and separated by SDS-PAGE. The blot was incubated with anti-ASH2L antibody (Cat#1732, 1:5,000) and HRP-conjugated goat anti-rabbit secondary antibody (Cat#201, 1:20,000) respectively. Image was developed using FeQ™ ECL Substrate Kit (Cat#226). ASH2L,ASH2 like, histone lysine methyltransferase complex subunit.

### SUPPORT

SUPPORT@GENUINBIOTECH.COM  
TEL: +1-540-855-7041

### ORDERS

SALES@GENUINBIOTECH.COM  
FAX: +1-540-855-7041

[WWW.GENUINBIOTECH.COM](http://WWW.GENUINBIOTECH.COM)