

Anti-ABCC2 Recombinant Rabbit Monoclonal Antibody



Catalog #: 1736

Aliases

ABCC2; ATP Binding Cassette Subfamily C Member 2; MRP2; CMRP; Canalicular Multispecific Organic Anion Transporter 1; CMOAT; DJS; ATP-Binding Cassette, Sub-Family C (CFTR/MRP), Member 2; ATP-Binding Cassette Sub-Family C Member 2; Multidrug Resistance-Associated Protein 2; Canalicular Multidrug Resistance Protein; EC 7.6.2.-; EC 7.6.2.2; EC 7.6.2.3; CMOAT1; ABC30

Background

Gene Name: ABCC2

NCBI Gene Entry: [1244](#)

UniProt Entry: [Q92887](#)

Application Information

Molecular Weight: Predicted, 174 kDa; observed, >200 kDa

Clonality: Rabbit monoclonal antibody

Clone ID: 23GB4275

Species Reactivity: Human

Applications Tested: Western blotting (WB), flow cytometry (FCM), immunocytochemistry (IC)

Immunogen

A synthesized peptide derived from human MRP2

Isotype

Rabbit IgG

Storage Buffer

Supplied in PBS (pH 7.4) containing 50% glycerol, and 0.02% sodium azide.

Storage

Store at -20 °C for one year.

Recommended Dilutions

Western Blotting (WB): 1:1,000-1:5,000

Flow Cytometry (FCM): 1:2,000

Immunocytochemistry (IC): 1:100-1:1,000

SUPPORT

SUPPORT@GENUINBIOTECH.COM
TEL: +1-540-855-7041

ORDERS

SALES@GENUINBIOTECH.COM
FAX: +1-540-855-7041

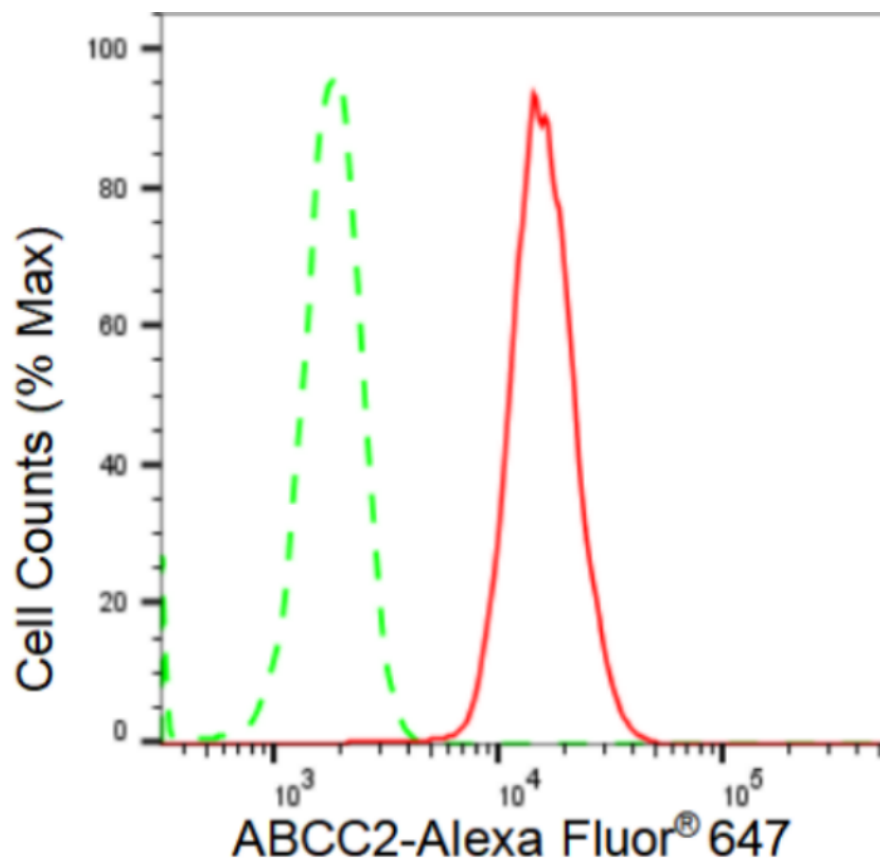
WWW.GENUINBIOTECH.COM

Anti-ABCC2 Recombinant Rabbit Monoclonal Antibody

PAGE 2

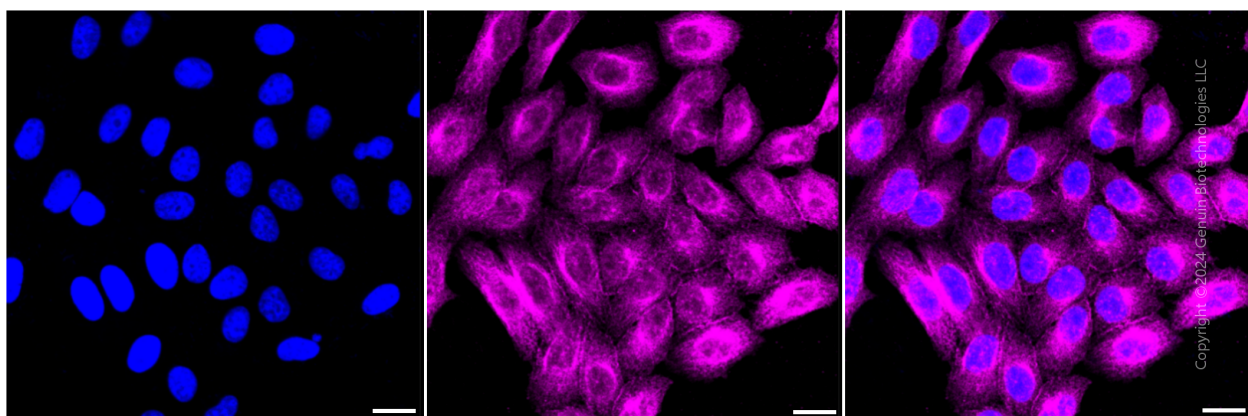
Note: This product is for research use only.

Validation Data



Copyright ©2024 Genuin Biotechnologies LLC

Flow cytometric analysis of ABCC2 expression in HepG2 cells using ABCC2 antibody (Cat#1736, 1:2,000). Green, isotype control; red, ABCC2.



Copyright ©2024 Genuin Biotechnologies LLC

Immunocytochemical staining of HepG2 cells with ABCC2 antibody (Cat#1736, 1:1,000). Nuclei were stained blue with DAPI; ABCC2 was stained magenta with Alexa Fluor® 647. Images were taken using Leica stellaris 5. Protein abundance based on laser Intensity and smart gain: Medium.

SUPPORT

SUPPORT@GENUINBIOTECH.COM
TEL: +1-540-855-7041

ORDERS

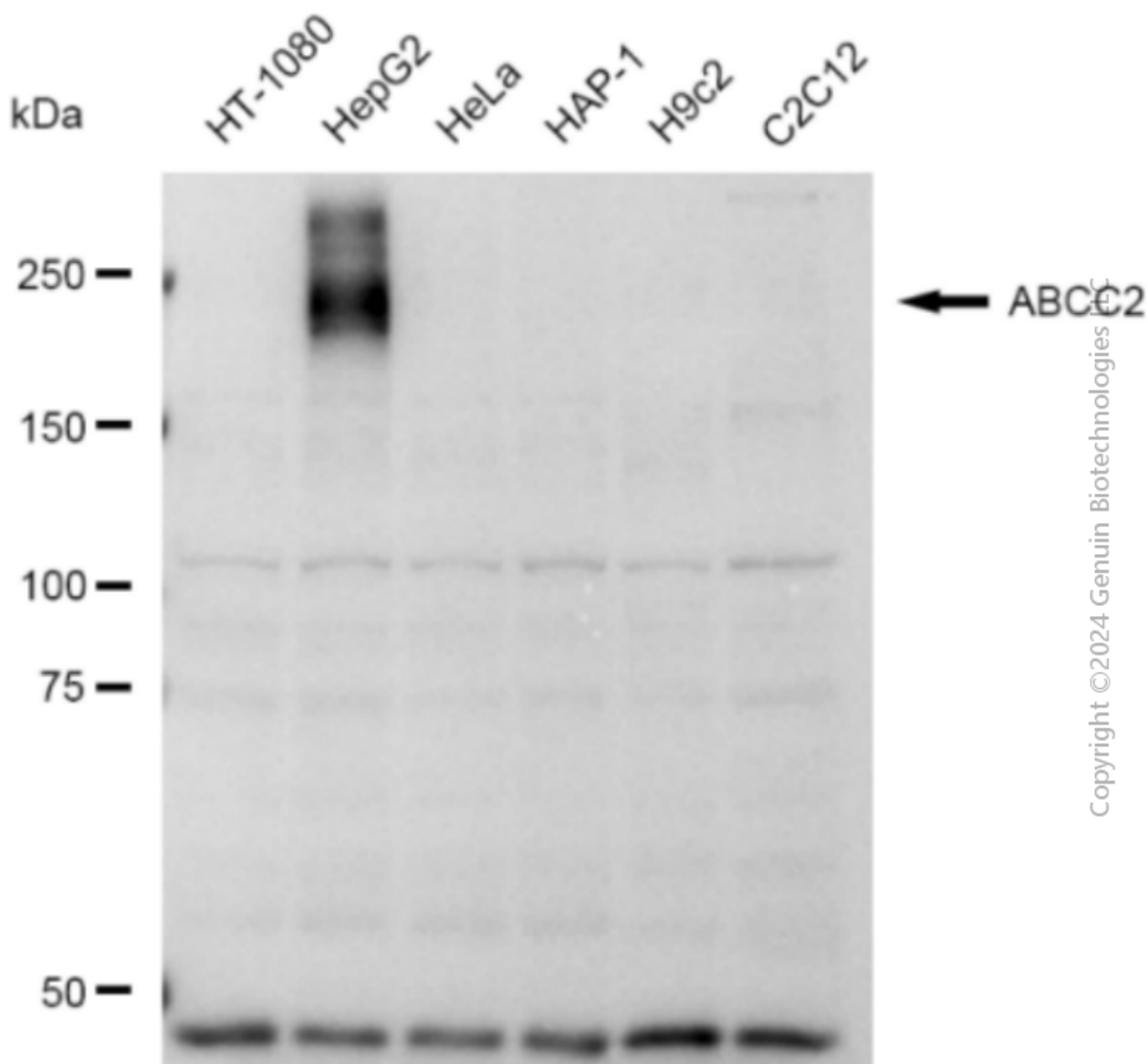
SALES@GENUINBIOTECH.COM
FAX: +1-540-855-7041

WWW.GENUINBIOTECH.COM

Anti-ABCC2 Recombinant Rabbit Monoclonal Antibody

PAGE 3

Scale bar: 20 μ m.



Western blotting analysis using anti-ABCC2 antibody (Cat#1736). Total cell lysates (30 μ g) from various cell lines were loaded and separated by SDS-PAGE. The blot was incubated with anti-ABCC2 antibody (Cat#1736, 1:5,000) and HRP-conjugated goat anti-rabbit secondary antibody (Cat#201, 1:20,000) respectively. Image was developed using FeQ™ ECL Substrate Kit (Cat#226).

SUPPORT

SUPPORT@GENUINBIOTECH.COM
TEL: +1-540-855-7041

ORDERS

SALES@GENUINBIOTECH.COM
FAX: +1-540-855-7041

WWW.GENUINBIOTECH.COM