

Anti-ACP5 Recombinant Rabbit Monoclonal Antibody



Catalog #: 1738

Aliases

ACP5; Acid Phosphatase 5, Tartrate Resistant; TRAP; HPAP; Tartrate-Resistant Acid Phosphatase Type 5; Tartrate-Resistant Acid ATPase; Human Purple Acid Phosphatase; EC 3.1.3.2; TrATPase; TRAcP; Tartrate-Resistant Acid Phosphatase 5a; Tartrate-Resistant Acid Phosphatase 5b; Tartrate-Resistant Acid Phosphatase; Type 5 Acid Phosphatase; TRACP5a; TRACP5b; TRACP; TR-AP

Background

Gene Name: ACP5

NCBI Gene Entry: [54](#)

UniProt Entry: [P13686](#)

Application Information

Molecular Weight: Predicted, 37 kDa; observed, 35,42 kDa

Clonality: Rabbit monoclonal antibody

Clone ID: 23GB4280

Species Reactivity: Human, mouse, rat

Applications Tested: Western blotting (WB), immunocytochemistry (IC), immunohistochemistry (IHC)

Immunogen

A synthesized peptide derived from human Tartrate Resistant Acid Phosphatase

Isotype

Rabbit IgG

Storage Buffer

Supplied in PBS (pH 7.4) containing 50% glycerol, and 0.02% sodium azide.

Storage

Store at -20 °C for one year.

Recommended Dilutions

Western Blotting (WB): 1:1,000-1:5,000

Immunocytochemistry (IC): 1:100-1:1,000

Immunohistochemistry (IHC): 1:100-1:200

SUPPORT

SUPPORT@GENUINBIOTECH.COM
TEL: +1-540-855-7041

ORDERS

SALES@GENUINBIOTECH.COM
FAX: +1-540-855-7041

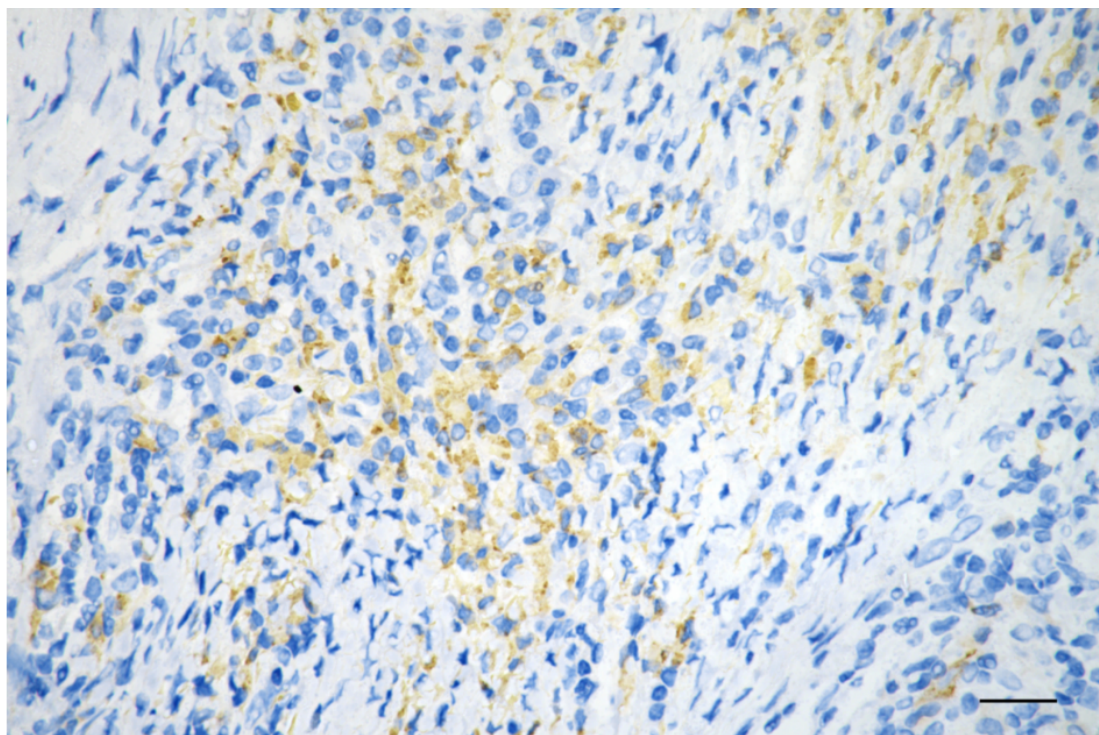
WWW.GENUINBIOTECH.COM

Anti-ACP5 Recombinant Rabbit Monoclonal Antibody

PAGE 2

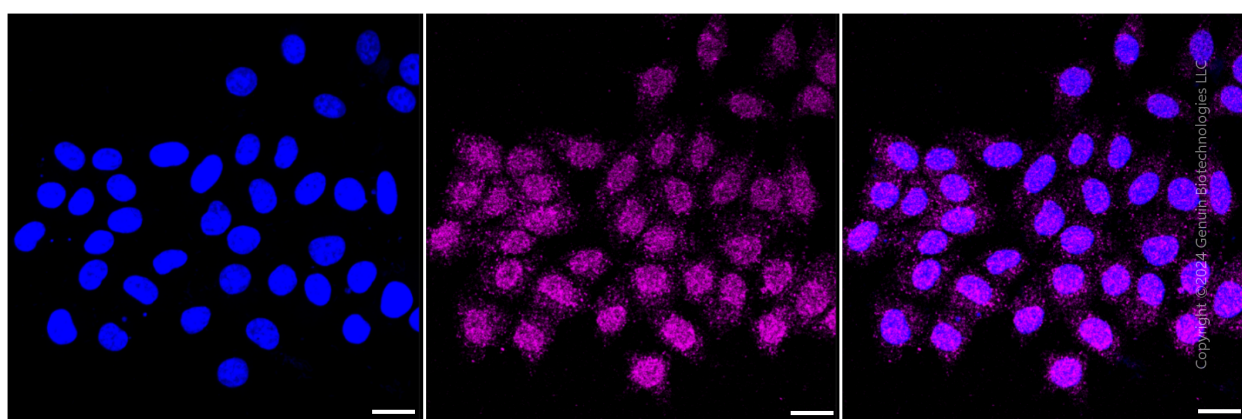
Note: This product is for research use only.

Validation Data



Copyright ©2025 Genuin Biotechnologies LLC

Immunohistochemistry was performed on paraffin-embedded human sigmoid colon carcinoma using anti-ACP5 antibody (Cat#1738, 1:200). Antigen retrieval was done in sodium citrate buffer (pH 6.0). DAB was used for detection, with hematoxylin counterstaining. Images were acquired using a Nikon Ci-L Plus microscope (40× objective). Scale bar: 25 μ m.



Copyright ©2024 Genuin Biotechnologies LLC

Immunocytochemical staining of HepG2 cells with ACP5 antibody (Cat#1738, 1:1,000). Nuclei were stained blue with DAPI; ACP5 was stained magenta with Alexa Fluor® 647. Images were taken using Leica stellaris 5. Protein abundance based on laser Intensity and smart gain: Low. Scale bar: 20 μ m.

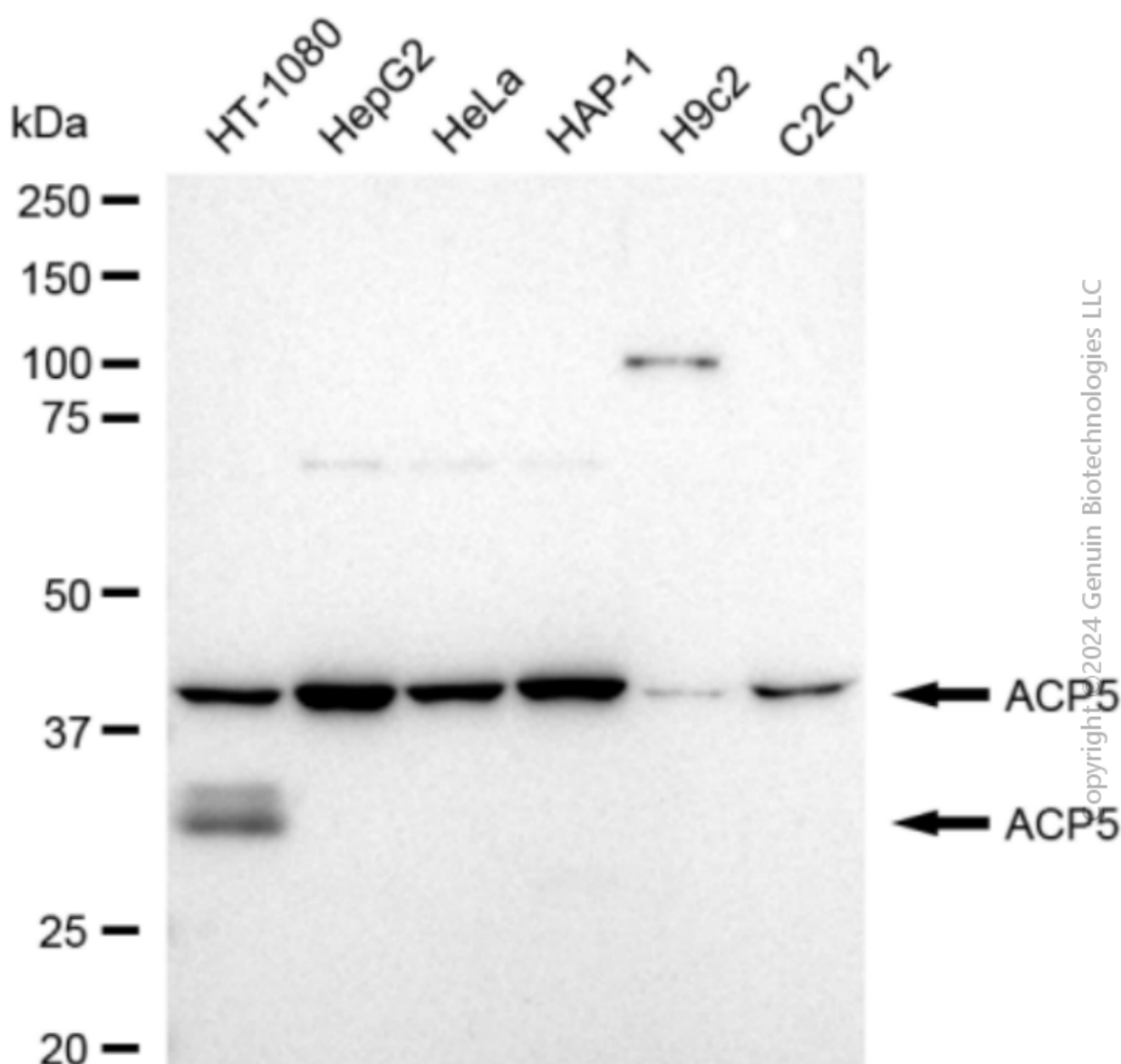
SUPPORT

SUPPORT@GENUINBIOTECH.COM
TEL: +1-540-855-7041

ORDERS

SALES@GENUINBIOTECH.COM
FAX: +1-540-855-7041

WWW.GENUINBIOTECH.COM



Western blotting analysis using anti-ACP5 antibody (Cat#1738). Total cell lysates (30 μ g) from various cell lines were loaded and separated by SDS-PAGE. The blot was incubated with anti-ACP5 antibody (Cat#1738, 1:5,000) and HRP-conjugated goat anti-rabbit secondary antibody (Cat#201, 1:20,000) respectively. Image was developed using FeQ™ ECL Substrate Kit (Cat#226).