

Anti-Adenosine A1 Recombinant Rabbit Monoclonal Antibody



Catalog #: 1745

Aliases

ADORA1; Adenosine A1 Receptor; RDC7; Adenosine Receptor A1

Background

Gene Name: ADORA1

NCBI Gene Entry: [134](#)

UniProt Entry: [P30542](#)

Application Information

Molecular Weight: Predicted, 37 kDa; observed, 35 kDa

Clonality: Rabbit monoclonal antibody

Clone ID: 23GB4300

Species Reactivity: Human, mouse, rat

Applications Tested: Western blotting (WB), flow cytometry (FCM), immunocytochemistry (IC)

Immunogen

A synthesized peptide derived from human ADORA1

Isotype

Rabbit IgG

Storage Buffer

Supplied in PBS (pH 7.4) containing 50% glycerol, and 0.02% sodium azide.

Storage

Store at -20 °C for one year.

Recommended Dilutions

Western Blotting (WB): 1:1,000-1:5,000

Flow Cytometry (FCM): 1:2,000

Immunocytochemistry (IC): 1:100-1:1,000

Note: This product is for research use only.

Validation Data

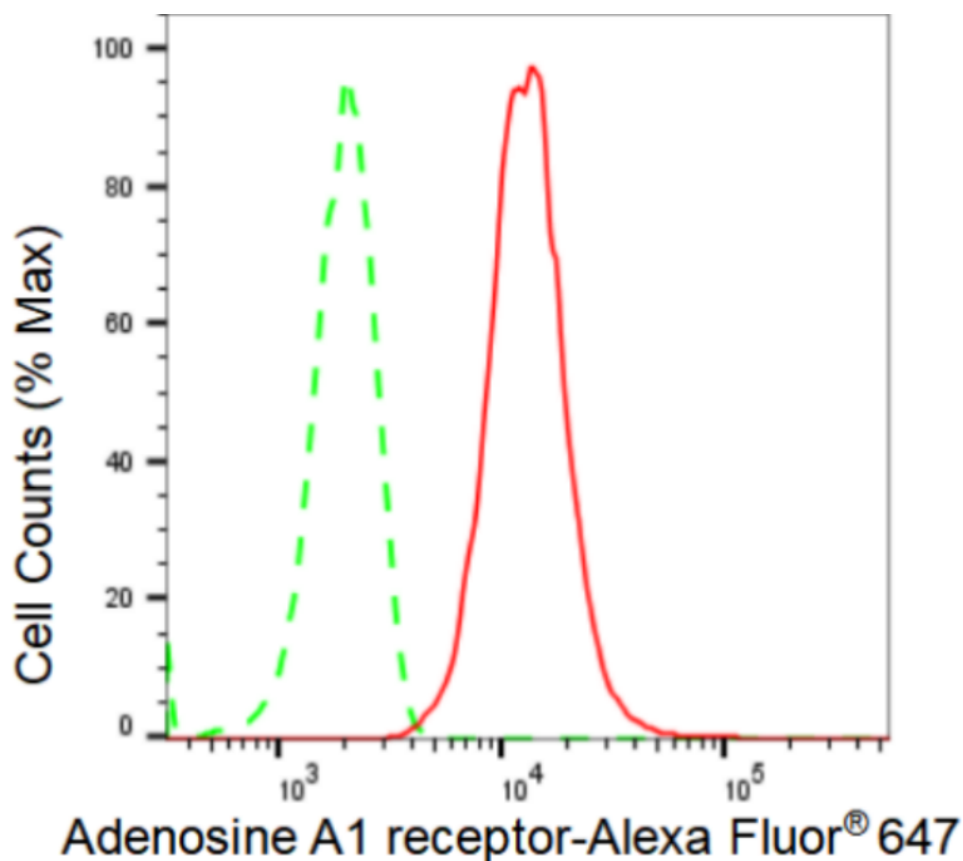
SUPPORT

SUPPORT@GENUINBIOTECH.COM
TEL: +1-540-855-7041

ORDERS

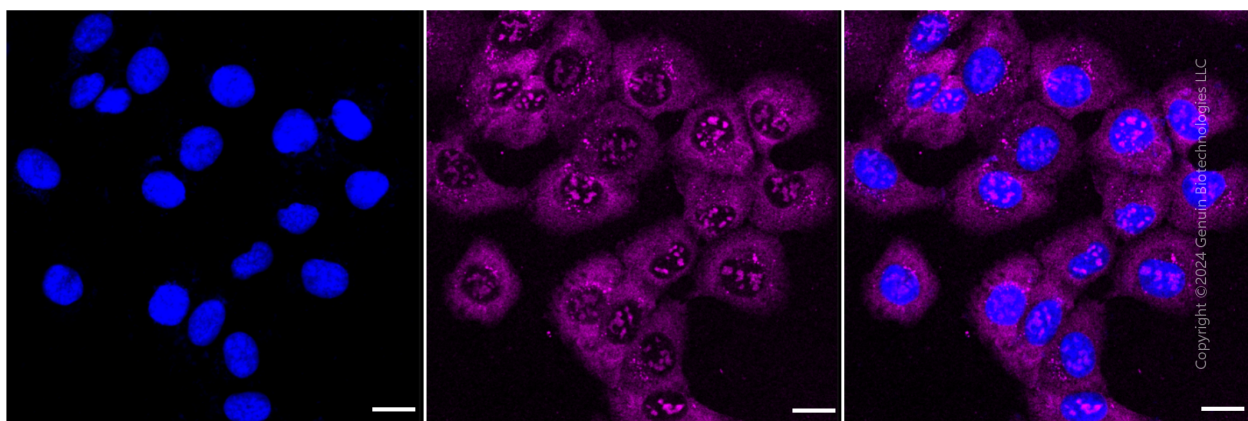
SALES@GENUINBIOTECH.COM
FAX: +1-540-855-7041

WWW.GENUINBIOTECH.COM



Copyright ©2024 Genuin Biotechnologies LLC

Flow cytometric analysis of Adenosine A1 receptor expression in HT-1080 cells using Adenosine A1 receptor antibody (Cat#1745, 1:2,000). Green, isotype control; red, Adenosine A1 receptor.



Immunocytochemical staining of HT-1080 cells with Adenosine A1 receptor antibody (Cat#1745, 1:1,000). Nuclei were stained blue with DAPI; Adenosine A1 receptor was stained magenta with Alexa Fluor® 647. Images were taken using Leica stellaris 5. Protein abundance based on laser Intensity and smart gain: Medium. Scale bar: 20 µm.

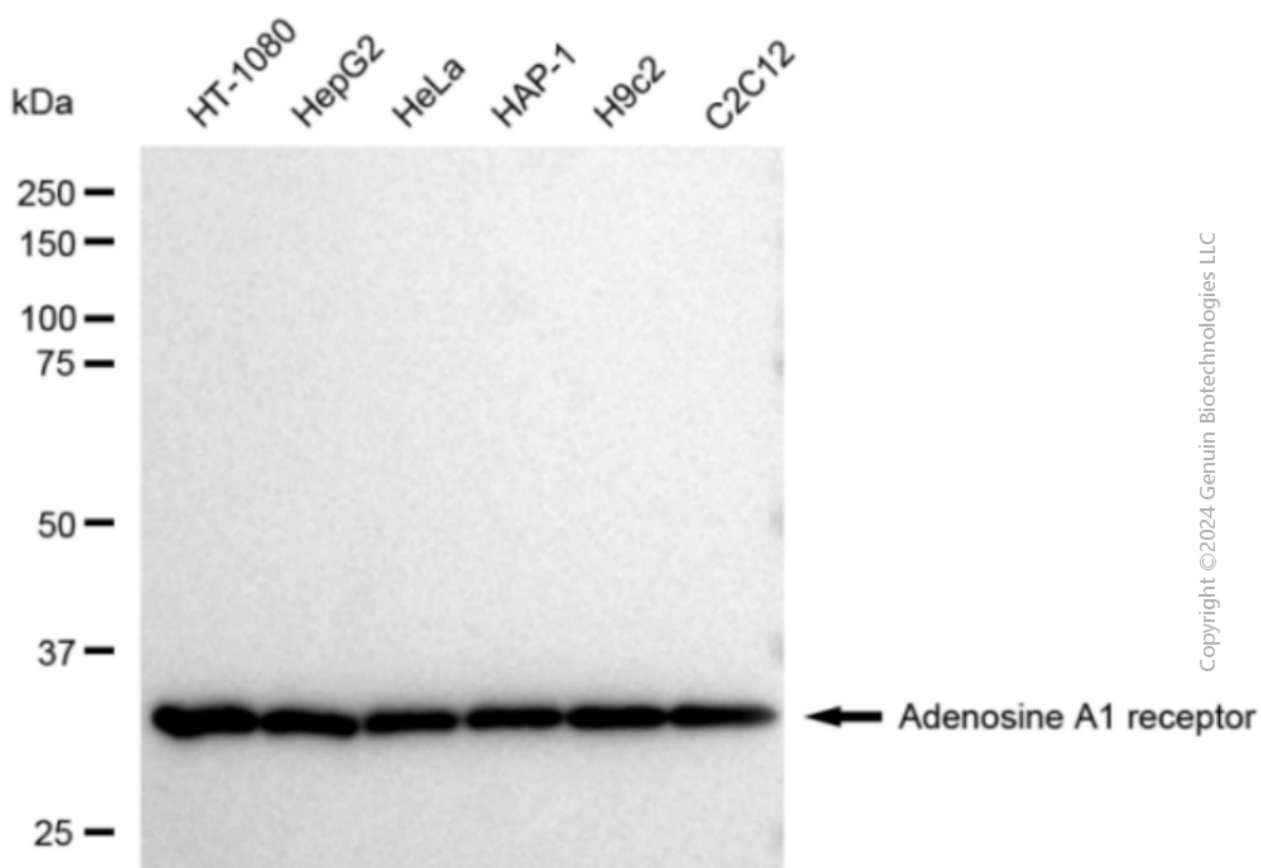
SUPPORT

SUPPORT@GENUINBIOTECH.COM
TEL: +1-540-855-7041

ORDERS

SALES@GENUINBIOTECH.COM
FAX: +1-540-855-7041

WWW.GENUINBIOTECH.COM



Western blotting analysis using anti-Adenosine A1 receptor antibody (Cat#1745). Total cell lysates (30 μ g) from various cell lines were loaded and separated by SDS-PAGE. The blot was incubated with anti-Adenosine A1 receptor antibody (Cat#1745, 1:5,000) and HRP-conjugated goat anti-rabbit secondary antibody (Cat#201, 1:20,000) respectively. Image was developed using FeQ™ ECL Substrate Kit (Cat#226).