

Anti-ALDH7A1 Recombinant Rabbit Monoclonal Antibody



Catalog #: 1748

Aliases

ALDH7A1; Aldehyde Dehydrogenase 7 Family Member A1; Alpha-Aminoadipic Semialdehyde Dehydrogenase; Alpha-AASA Dehydrogenase; P6c Dehydrogenase; ATQ1; EPD; PDE; Delta1-Piperidine-6-Carboxylate Dehydrogenase; Betaine Aldehyde Dehydrogenase; 26g Turgor Protein Homolog; Antiquitin-1; Delta1-Piperidine-6-Carboxylate Dehydrogenase; Aldehyde Dehydrogenase 7 Family, Member A1; Epididymis Secretory Sperm Binding Protein; Aldehyde Dehydrogenase Family 7 Member A1; Antiquitin 1; EC 1.2.1.31; EC 1.2.1.3 4; EC 1.2.1.8 4; EC 1.2.1

Background

Gene Name: ALDH7A1

NCBI Gene Entry: [501](#)

UniProt Entry: [P49419](#)

Application Information

Molecular Weight: Predicted, 58 kDa; observed, 55 kDa

Clonality: Rabbit monoclonal antibody

Clone ID: 23GB4310

Species Reactivity: Human

Applications Tested: Western blotting (WB), flow cytometry (FCM), immunocytochemistry (IC)

Immunogen

A synthesized peptide derived from human ALDH7A1

Isotype

Rabbit IgG

Storage Buffer

Supplied in PBS (pH 7.4) containing 50% glycerol, and 0.02% sodium azide.

Storage

Store at -20 °C for one year.

Recommended Dilutions

Western Blotting (WB): 1:1,000-1:5,000

Flow Cytometry (FCM): 1:2,000

SUPPORT

SUPPORT@GENUINBIOTECH.COM
TEL: +1-540-855-7041

ORDERS

SALES@GENUINBIOTECH.COM
FAX: +1-540-855-7041

WWW.GENUINBIOTECH.COM

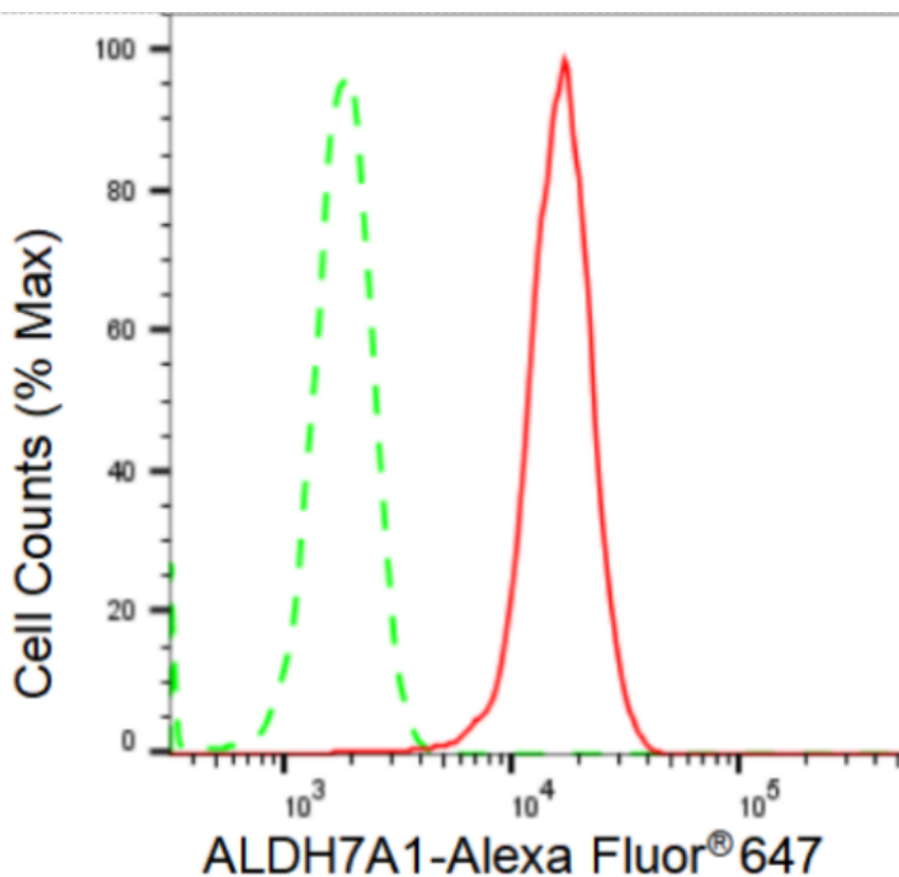
Anti-ALDH7A1 Recombinant Rabbit Monoclonal Antibody

PAGE 2

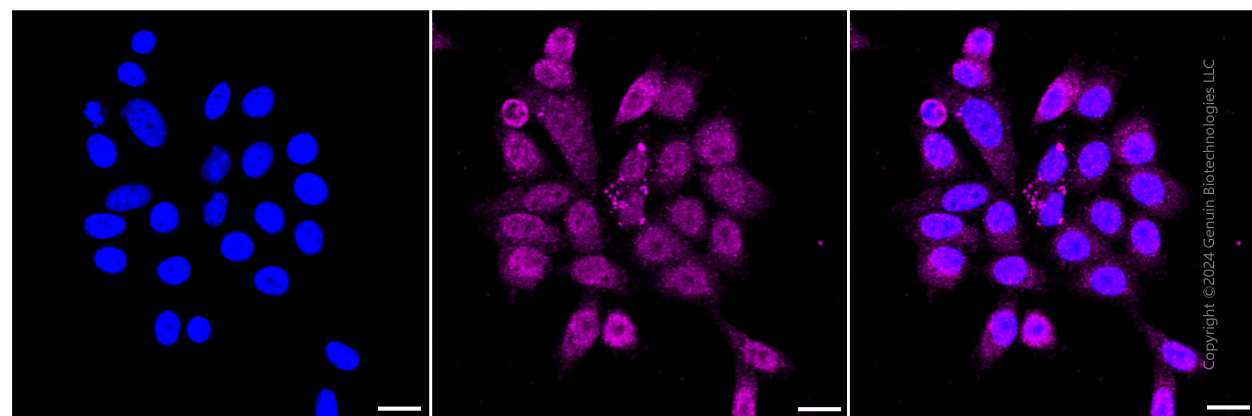
Immunocytochemistry (IC): 1:100-1:1,000

Note: This product is for research use only.

Validation Data



Copyright ©2024 Genuin Biotechnologies LLC



Copyright ©2024 Genuin Biotechnologies LLC

SUPPORT

SUPPORT@GENUINBIOTECH.COM
TEL: +1-540-855-7041

ORDERS

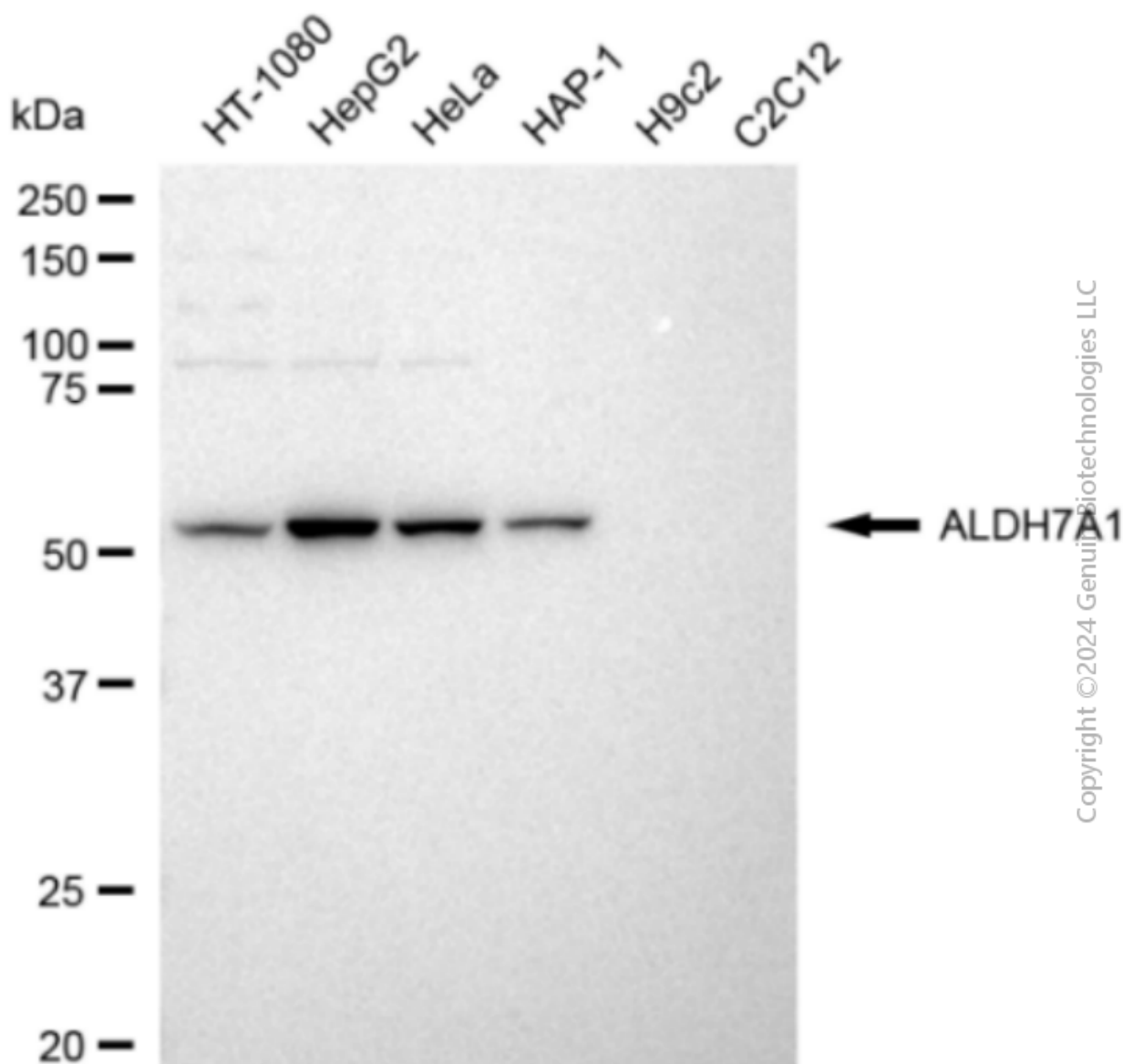
SALES@GENUINBIOTECH.COM
FAX: +1-540-855-7041

WWW.GENUINBIOTECH.COM

Anti-ALDH7A1 Recombinant Rabbit Monoclonal Antibody

PAGE 3

Nuclei were stained blue with DAPI; ALDH7A1 was stained magenta with Alexa Fluor® 647. Images were taken using Leica stellaris 5. Protein abundance based on laser Intensity and smart gain: Medium. Scale bar: 20 µm.



Western blotting analysis using anti-ALDH7A1 antibody (Cat#1748). Total cell lysates (30 µg) from various cell lines were loaded and separated by SDS-PAGE. The blot was incubated with anti-ALDH7A1 antibody (Cat#1748, 1:5,000) and HRP-conjugated goat anti-rabbit secondary antibody (Cat#201, 1:20,000) respectively. Image was developed using FeQ™ ECL Substrate Kit (Cat#226).

SUPPORT

SUPPORT@GENUINBIOTECH.COM
TEL: +1-540-855-7041

ORDERS

SALES@GENUINBIOTECH.COM
FAX: +1-540-855-7041

WWW.GENUINBIOTECH.COM