

Anti-Angiopoietin like 3 Recombinant Rabbit Monoclonal Antibody



Catalog #: 1752

Aliases

ANGPTL3; Angiopoietin Like 3; ANGPT5; Angiopoietin-Related Protein 3; Angiopoietin 5; ANG-5; Angiopoietin-Like Protein; Angiopoietin-Like 3; Angiopoietin-5; FHBL2; ANL3

Background

Gene Name: ANGPTL3

NCBI Gene Entry: [27329](#)

UniProt Entry: [Q9Y5C1](#)

Application Information

Molecular Weight: Predicted, 54 kDa; observed, 54 kDa

Clonality: Rabbit monoclonal antibody

Clone ID: 23GB4320

Species Reactivity: Human

Applications Tested: Western blotting (WB), flow cytometry (FCM), immunocytochemistry (IC)

Immunogen

A synthesized peptide derived from human ANGPTL3

Isotype

Rabbit IgG

Storage Buffer

Supplied in PBS (pH 7.4) containing 50% glycerol, and 0.02% sodium azide.

Storage

Store at -20 °C for one year.

Recommended Dilutions

Western Blotting (WB): 1:1,000-1:5,000

Flow Cytometry (FCM): 1:2,000

Immunocytochemistry (IC): 1:100-1:1,000

Note: This product is for research use only.

Validation Data

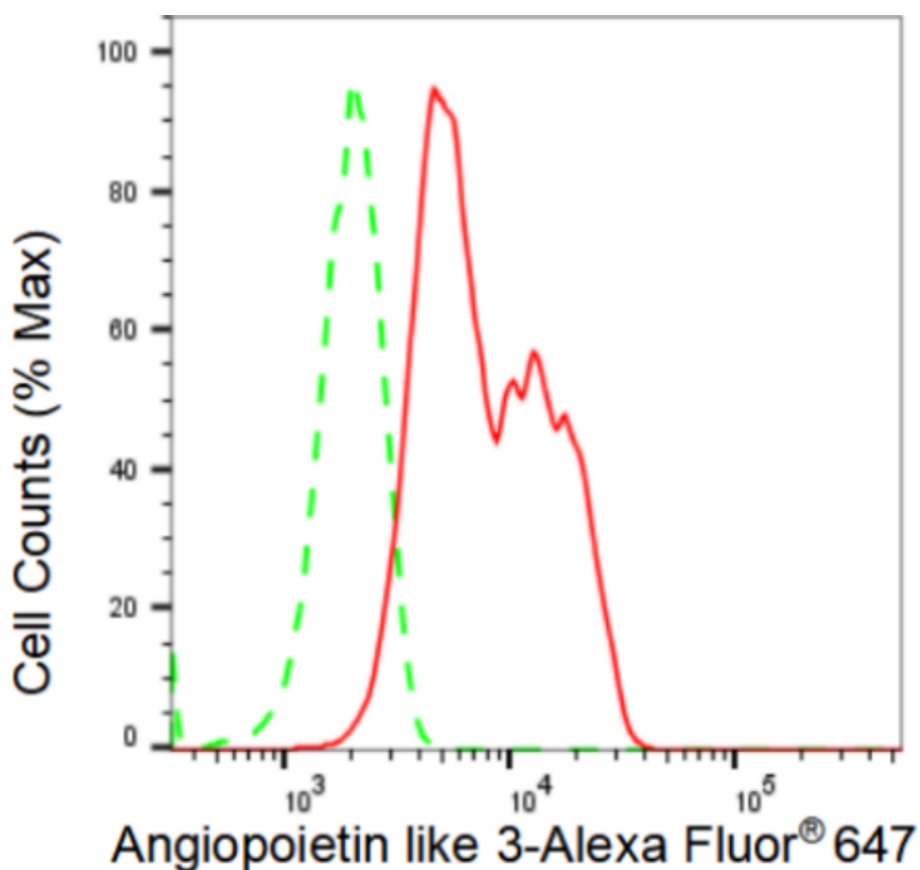
SUPPORT

SUPPORT@GENUINBIOTECH.COM
TEL: +1-540-855-7041

ORDERS

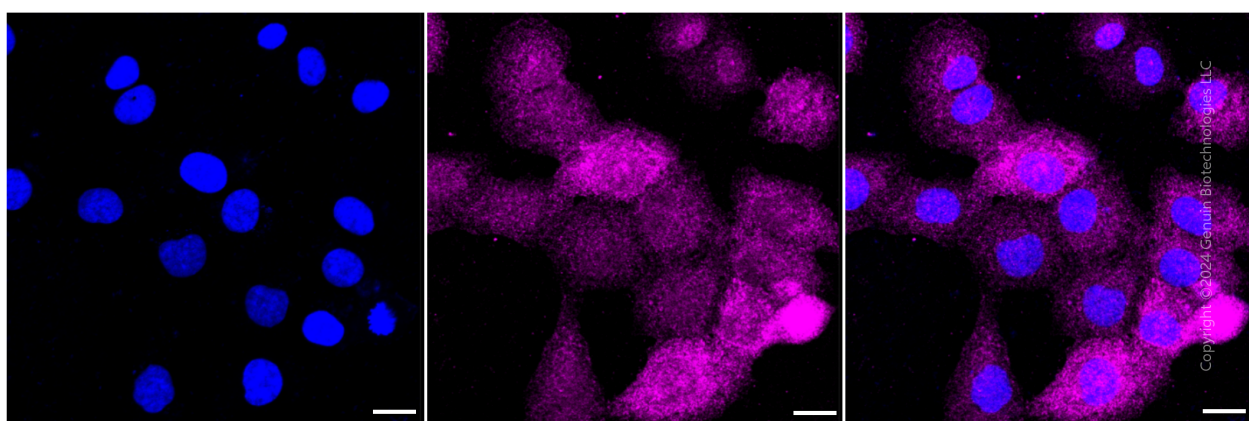
SALES@GENUINBIOTECH.COM
FAX: +1-540-855-7041

WWW.GENUINBIOTECH.COM



Copyright ©2024 Genuin Biotechnologies LLC

Flow cytometric analysis of Angiopoietin like 3 expression in HT-1080 cells using Angiopoietin like 3 antibody (Cat#1752, 1:2,000). Green, isotype control; red, Angiopoietin like 3.



Immunocytochemical staining of HT-1080 cells with Angiopoietin like 3 antibody (Cat#1752, 1:1,000). Nuclei were stained blue with DAPI; Angiopoietin like 3 was stained magenta with Alexa Fluor® 647. Images were taken using Leica stellaris 5. Protein abundance based on laser Intensity and smart gain: Medium. Scale bar: 20 μ m.

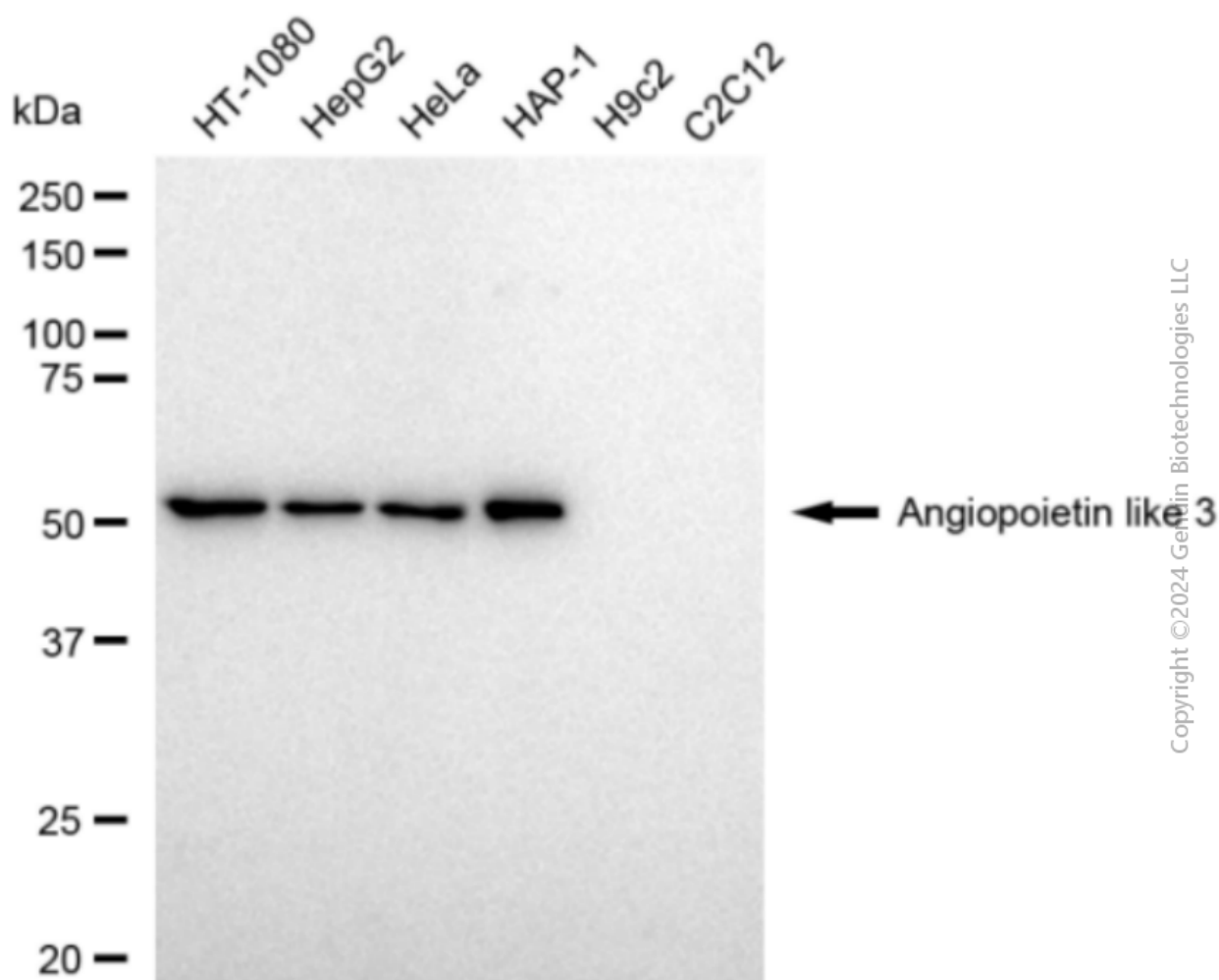
SUPPORT

SUPPORT@GENUINBIOTECH.COM
TEL: +1-540-855-7041

ORDERS

SALES@GENUINBIOTECH.COM
FAX: +1-540-855-7041

WWW.GENUINBIOTECH.COM



Western blotting analysis using anti-Angiopoietin like 3 antibody (Cat#1752). Total cell lysates (30 μ g) from various cell lines were loaded and separated by SDS-PAGE. The blot was incubated with anti-Angiopoietin like 3 antibody (Cat#1752, 1:5,000) and HRP-conjugated goat anti-rabbit secondary antibody (Cat#201, 1:20,000) respectively. Image was developed using FeQ™ ECL Substrate Kit (Cat#226).