

# Anti-Activating transcription factor 1 Recombinant Rabbit Monoclonal Antibody



**Catalog #: 1753**

## Aliases

ATF1; Activating Transcription Factor 1; TREB36; Cyclic AMP-Dependent Transcription Factor ATF-1; CAMP-Dependent Transcription Factor ATF-1; Protein TREB36; FUS/ATF-1; EWS-ATF1

## Background

Gene Name: ATF1

NCBI Gene Entry: [466](#)

UniProt Entry: [P18846](#)

## Application Information

Molecular Weight: Predicted, 29 kDa; observed, 36 kDa

Clonality: Rabbit monoclonal antibody

Clone ID: 23GB4325

Species Reactivity: Human

Applications Tested: Western blotting (WB), flow cytometry (FCM), immunocytochemistry (IC)

## Immunogen

A synthesized peptide derived from human ATF1

## Isotype

Rabbit IgG

## Storage Buffer

Supplied in PBS (pH 7.4) containing 50% glycerol, and 0.02% sodium azide.

## Storage

Store at -20 °C for one year.

## Recommended Dilutions

Western Blotting (WB): 1:1,000-1:5,000

Flow Cytometry (FCM): 1:2,000

Immunocytochemistry (IC): 1:100-1:1,000

**Note:** This product is for research use only.

---

### SUPPORT

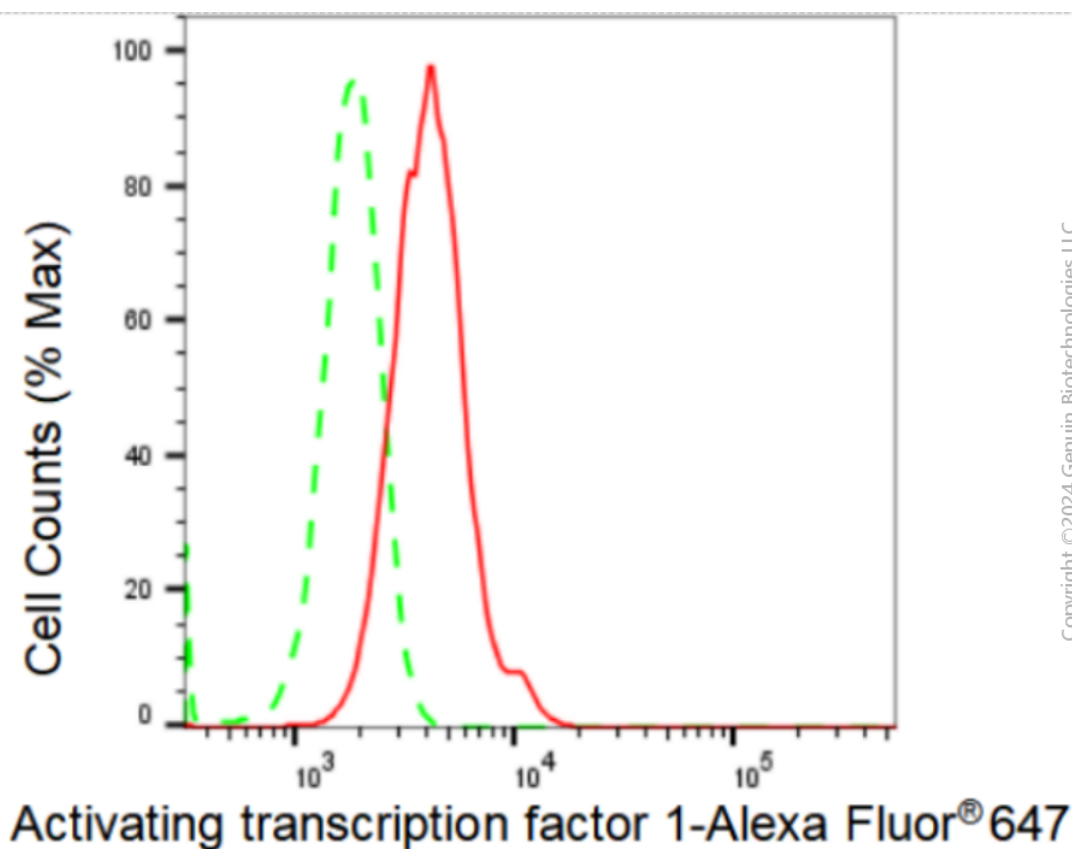
SUPPORT@GENUINBIOTECH.COM  
TEL: +1-540-855-7041

### ORDERS

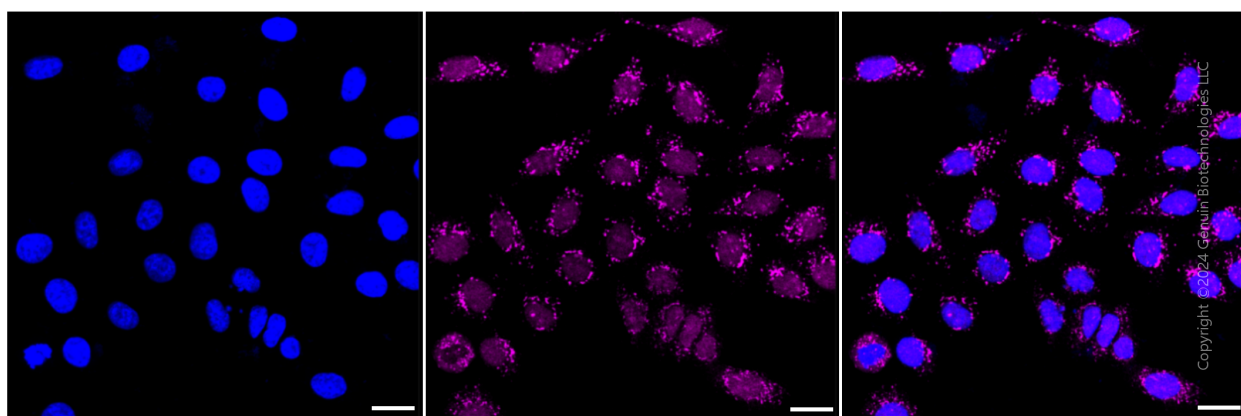
SALES@GENUINBIOTECH.COM  
FAX: +1-540-855-7041

[WWW.GENUINBIOTECH.COM](http://WWW.GENUINBIOTECH.COM)

**Validation Data**



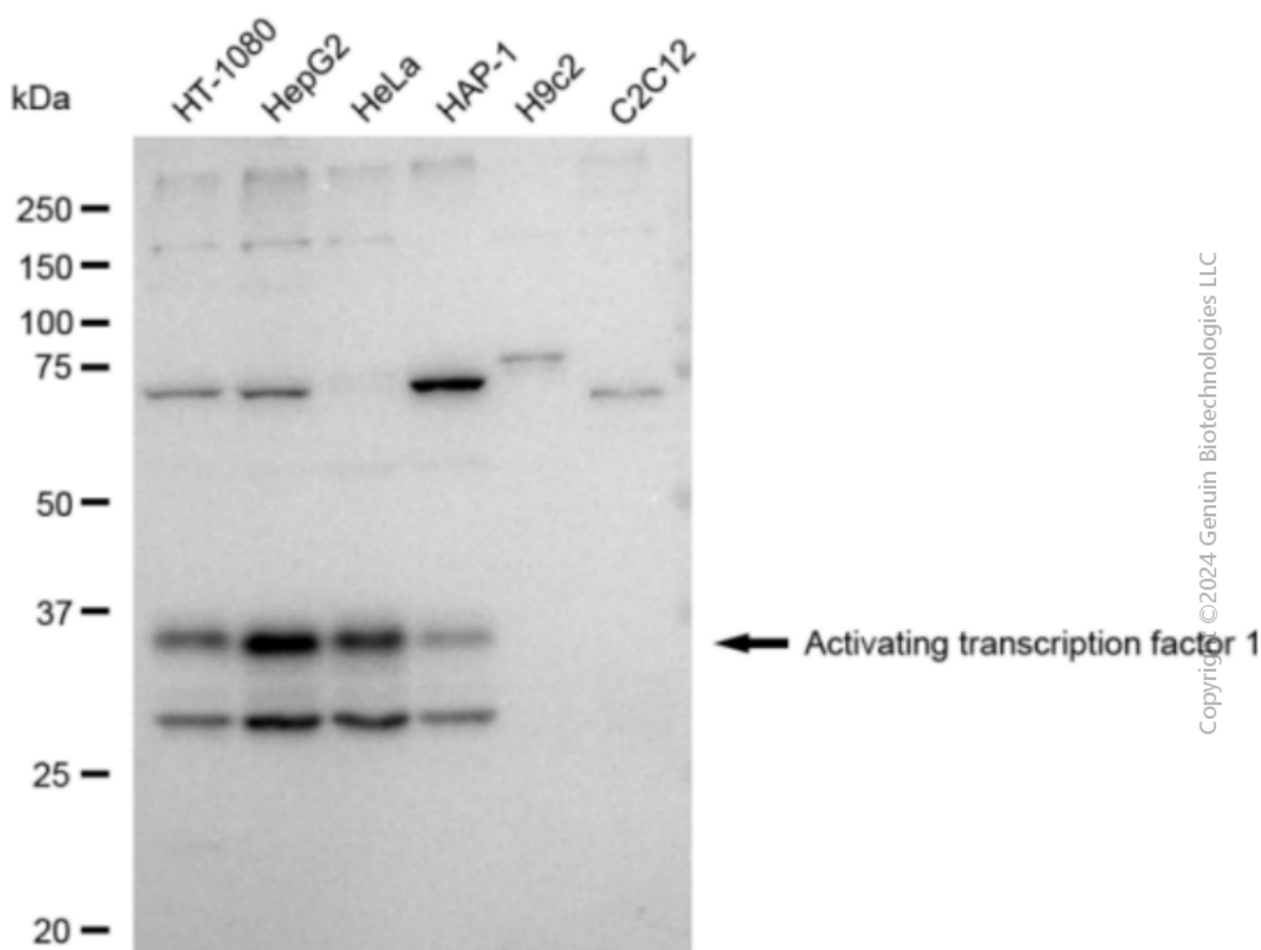
Flow cytometric analysis of Activating transcription factor 1 expression in HepG2 cells using Activating transcription factor 1 antibody (Cat#1753, 1:2,000). Green, isotype control; red, Activating transcription factor 1.



Immunocytochemical staining of HepG2 cells with Activating transcription factor 1 antibody (Cat#1753, 1:1,000). Nuclei were stained blue with DAPI; Activating transcription factor 1 was stained magenta with Alexa Fluor® 647. Images were taken using Leica stellaris 5. Protein abundance based on laser Intensity and smart gain: Medium. Scale bar: 20  $\mu$ m.

## Anti-Activating transcription factor 1 Recombinant Rabbit Monoclonal Antibody

PAGE 3



Western blotting analysis using anti-Activating transcription factor 1 antibody (Cat#1753). Total cell lysates (30  $\mu$ g) from various cell lines were loaded and separated by SDS-PAGE. The blot was incubated with anti-Activating transcription factor 1 antibody (Cat#1753, 1:5,000) and HRP-conjugated goat anti-rabbit secondary antibody (Cat#201, 1:20,000) respectively. Image was developed using FeQ<sup>TM</sup> ECL Substrate Kit (Cat#226).

### SUPPORT

SUPPORT@GENUINBIOTECH.COM  
TEL: +1-540-855-7041

### ORDERS

SALES@GENUINBIOTECH.COM  
FAX: +1-540-855-7041

[WWW.GENUINBIOTECH.COM](http://WWW.GENUINBIOTECH.COM)