

Anti-Casein kinase 2 alpha 1 Recombinant Rabbit Monoclonal Antibody



Catalog #: 1754

Aliases

Casein Kinase 2 Alpha 1; Casein Kinase II Subunit Alpha; Casein Kinase 2, Alpha 1 Polypeptide; EC 2.7.11.1; CK2A1; Cka1; Cka2; Casein Kinase II Alpha 1 Polypeptide Pseudogene; Casein Kinase II Alpha 1 Subunit; CK2 Catalytic Subunit Alpha; Protein Kinase CK2; CK II Alpha; EC 2.7.11; OCNDS; CKII; CKA1; CKA2

Background

Gene Name: CSNK2A1

NCBI Gene Entry: [1457](#)

UniProt Entry: [P68400](#)

Application Information

Molecular Weight: Predicted, 45 kDa; observed, 42 kDa

Clonality: Rabbit monoclonal antibody

Clone ID: 23GB1240

Species Reactivity: Human, mouse, rat

Applications Tested: Western blotting (WB), flow cytometry (FCM), immunocytochemistry (IC)

Immunogen

A synthesized peptide derived from human CKII alpha

Isotype

Rabbit IgG

Storage Buffer

Supplied in PBS (pH 7.4) containing 50% glycerol, and 0.02% sodium azide.

Storage

Store at -20 °C for one year.

Recommended Dilutions

Western Blotting (WB): 1:1,000-1:5,000

Flow Cytometry (FCM): 1:2,000

Immunocytochemistry (IC): 1:100-1:1,000

SUPPORT

SUPPORT@GENUINBIOTECH.COM
TEL: +1-540-855-7041

ORDERS

SALES@GENUINBIOTECH.COM
FAX: +1-540-855-7041

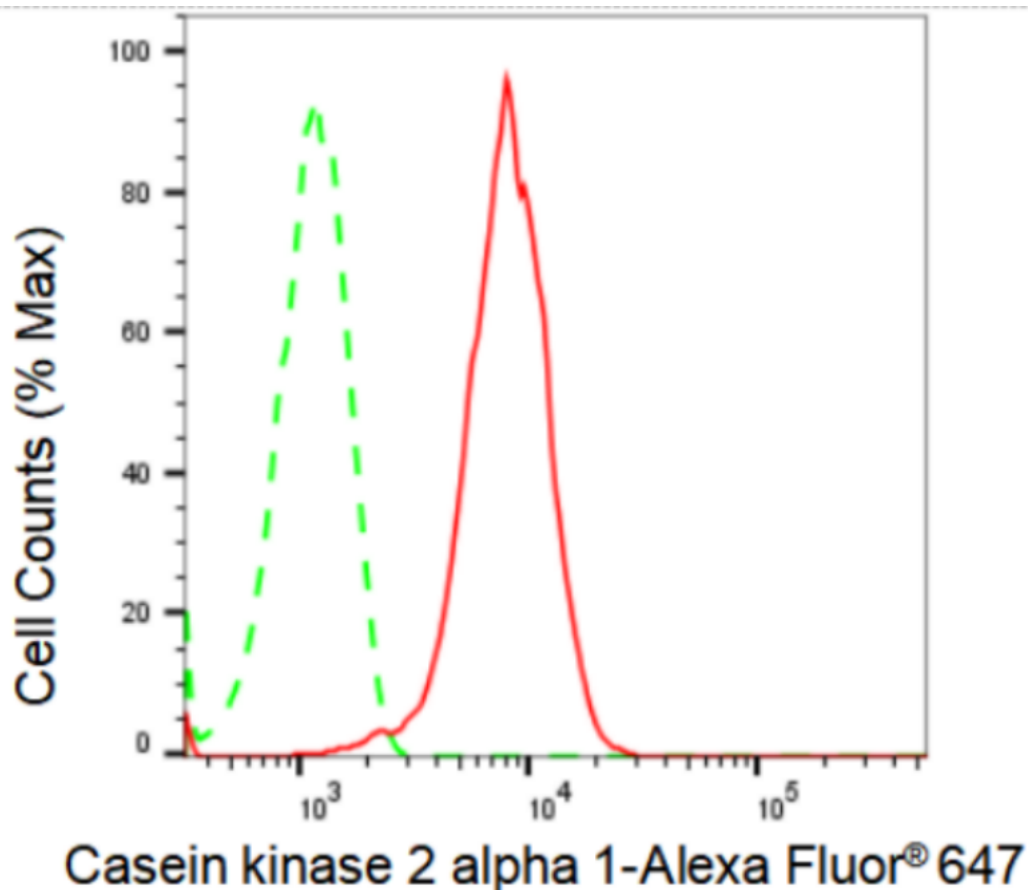
WWW.GENUINBIOTECH.COM

Anti-Casein kinase 2 alpha 1 Recombinant Rabbit Monoclonal Antibody

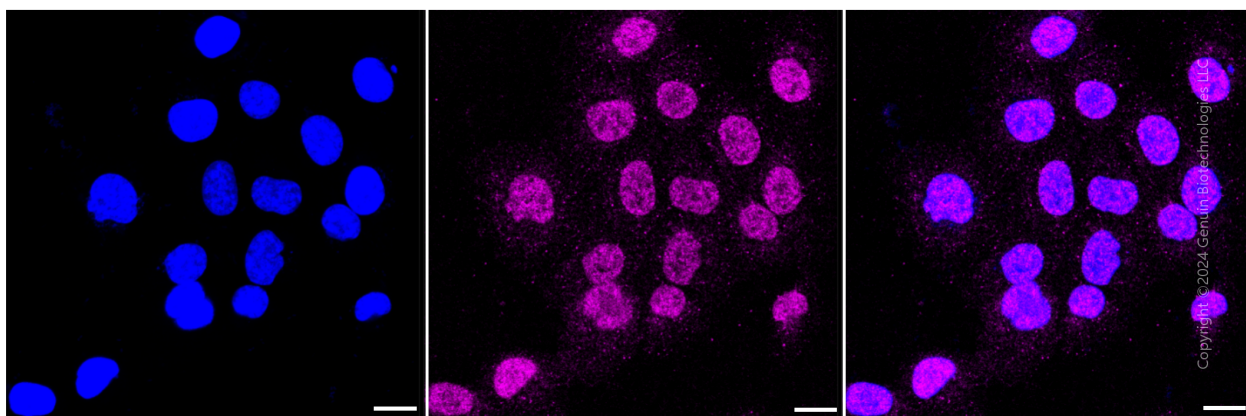
PAGE 2

Note: This product is for research use only.

Validation Data



Flow cytometric analysis of Casein kinase 2 alpha 1 expression in HepG2 cells using Casein kinase 2 alpha 1 antibody (Cat#1754, 1:2,000). Green, isotype control; red, Casein kinase 2 alpha 1.



Immunocytochemical staining of HT-1080 cells with Casein kinase 2 alpha 1 antibody (Cat#1754,

SUPPORT

SUPPORT@GENUINBIOTECH.COM
TEL: +1-540-855-7041

ORDERS

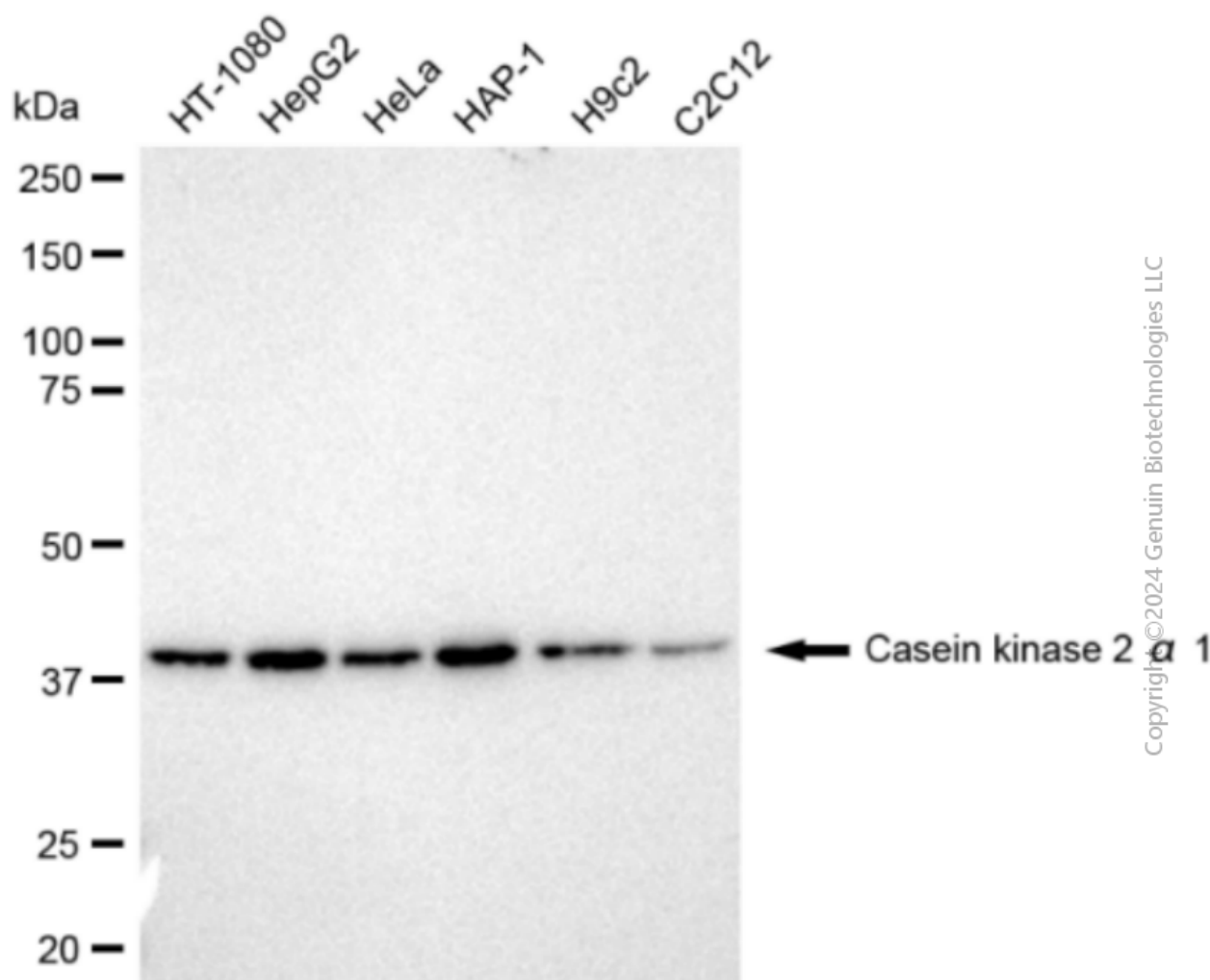
SALES@GENUINBIOTECH.COM
FAX: +1-540-855-7041

WWW.GENUINBIOTECH.COM

Anti-Casein kinase 2 alpha 1 Recombinant Rabbit Monoclonal Antibody

PAGE 3

1:1,000). Nuclei were stained blue with DAPI; Casein kinase 2 alpha 1 was stained magenta with Alexa Fluor® 647. Images were taken using Leica stellaris 5. Protein abundance based on laser Intensity and smart gain: Low. Scale bar: 20 µm.



Western blotting analysis using anti-Casein kinase 2 alpha 1 antibody (Cat#1754). Total cell lysates (30 µg) from various cell lines were loaded and separated by SDS-PAGE. The blot was incubated with anti-Casein kinase 2 alpha 1 antibody (Cat#1754, 1:5,000) and HRP-conjugated goat anti-rabbit secondary antibody (Cat#201, 1:20,000) respectively. Image was developed using FeQ™ ECL Substrate Kit (Cat#226).

SUPPORT

SUPPORT@GENUINBIOTECH.COM
TEL: +1-540-855-7041

ORDERS

SALES@GENUINBIOTECH.COM
FAX: +1-540-855-7041

WWW.GENUINBIOTECH.COM