

Anti-ATOH1 Recombinant Rabbit Monoclonal Antibody



Catalog #: 1756

Aliases

ATOH1; Atonal BHLH Transcription Factor 1; HATH1; BHLHa14; MATH-1; Atonal Homolog BHLH Transcription Factor 1; Class A Basic Helix-Loop-Helix Protein 14; Basic Helix-Loop-Helix Family Member A14; Helix-Loop-Helix Protein HATH-1; Transcription Factor ATOH1; Protein Atonal Homolog 1; BHLHA14; ATH1; Atonal Homolog 1 (Drosophila); Atonal Homolog 1; DFNA89; Math1; MATH1

Background

Gene Name: ATOH1

NCBI Gene Entry: [474](#)

UniProt Entry: [Q92858](#)

Application Information

Molecular Weight: Predicted, 38 kDa; observed, 38 kDa

Clonality: Rabbit monoclonal antibody

Clone ID: 23GB4335

Species Reactivity: Human

Applications Tested: Western blotting (WB), immunocytochemistry (IC)

Immunogen

A synthesized peptide derived from human MATH1/HATH1

Isotype

Rabbit IgG

Storage Buffer

Supplied in PBS (pH 7.4) containing 50% glycerol, and 0.02% sodium azide.

Storage

Store at -20 °C for one year.

Recommended Dilutions

Western Blotting (WB): 1:1,000-1:5,000

Immunocytochemistry (IC): 1:100-1:1,000

SUPPORT

SUPPORT@GENUINBIOTECH.COM
TEL: +1-540-855-7041

ORDERS

SALES@GENUINBIOTECH.COM
FAX: +1-540-855-7041

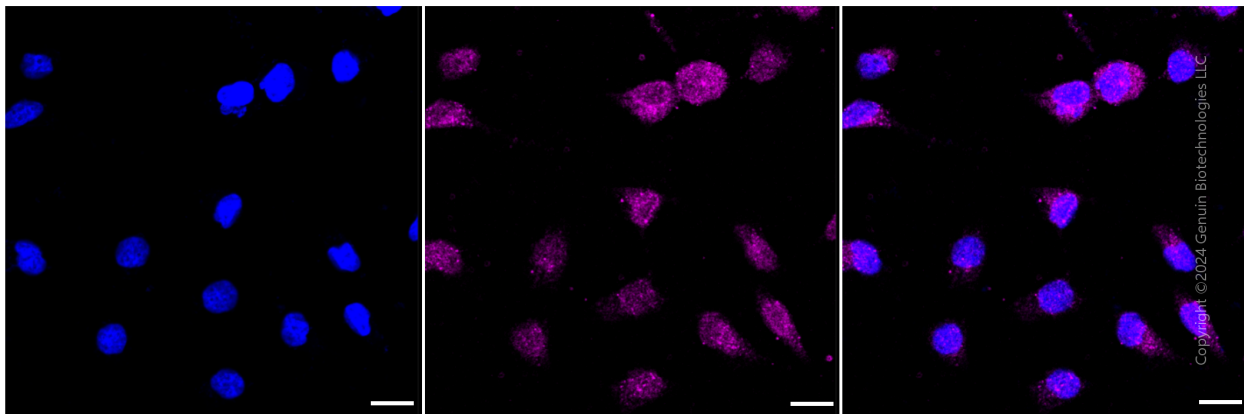
WWW.GENUINBIOTECH.COM

Anti-ATOH1 Recombinant Rabbit Monoclonal Antibody

PAGE 2

Note: This product is for research use only.

Validation Data



Immunocytochemical staining of HeLa cells with ATOH1 antibody (Cat#1756, 1:1,000). Nuclei were stained blue with DAPI; ATOH1 was stained magenta with Alexa Fluor® 647. Images were taken using Leica stellaris 5. Protein abundance based on laser Intensity and smart gain: Medium. Scale bar: 20 μ m.

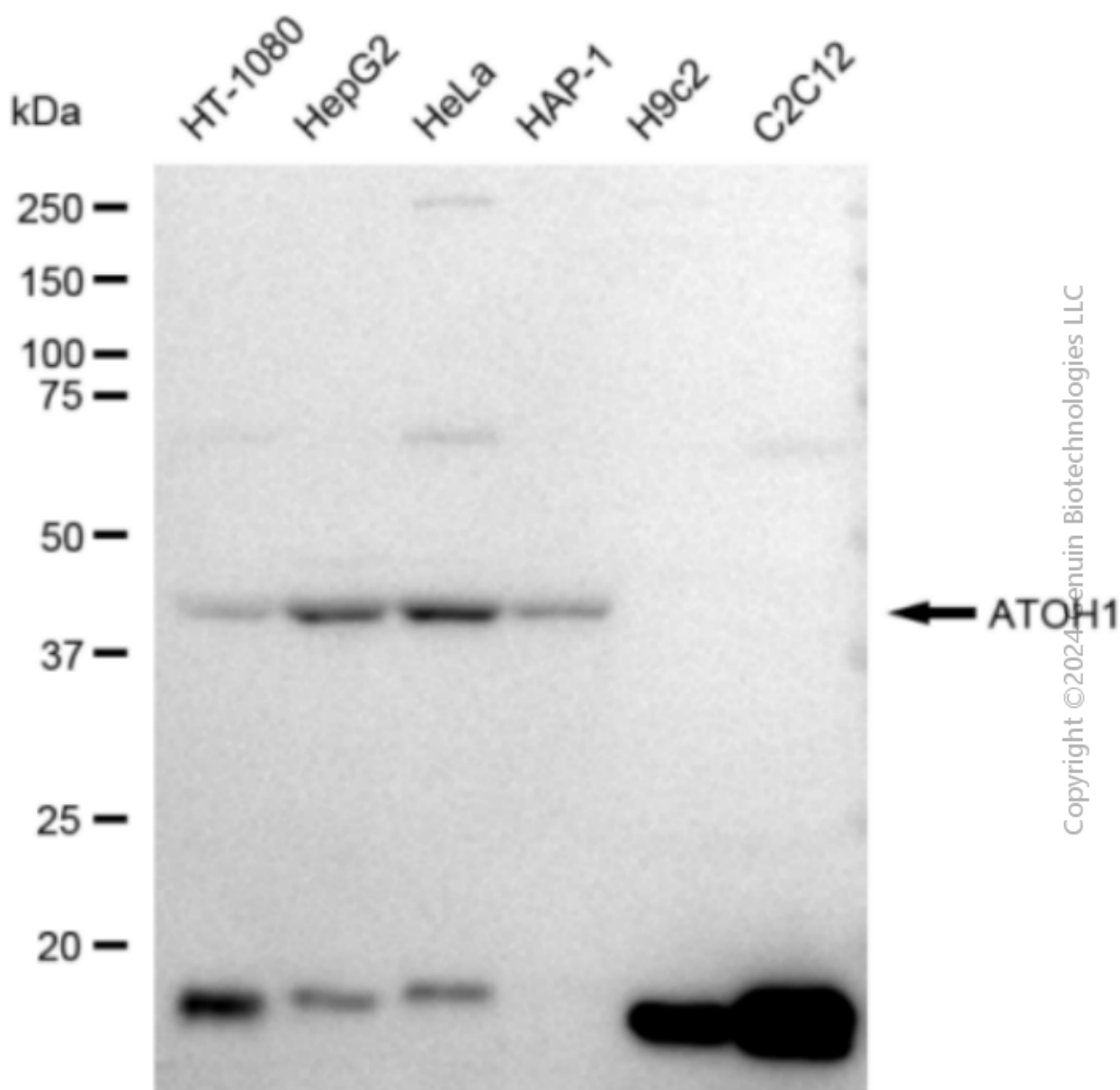
SUPPORT

SUPPORT@GENUINBIOTECH.COM
TEL: +1-540-855-7041

ORDERS

SALES@GENUINBIOTECH.COM
FAX: +1-540-855-7041

WWW.GENUINBIOTECH.COM



Western blotting analysis using anti-ATOH1 antibody (Cat#1756). Total cell lysates (30 µg) from various cell lines were loaded and separated by SDS-PAGE. The blot was incubated with anti-ATOH1 antibody (Cat#1756, 1:5,000) and HRP-conjugated goat anti-rabbit secondary antibody (Cat#201, 1:20,000) respectively. Image was developed using FeQ™ ECL Substrate Kit (Cat#226).