

# Anti-ATP2A1 Recombinant Rabbit Monoclonal Antibody



**Catalog #: 1758**

## Aliases

ATP2A1; ATPase Sarcoplasmic/Endoplasmic Reticulum Ca<sup>2+</sup> Transporting 1; SERCA1; Sarcoplasmic/Endoplasmic Reticulum Calcium ATPase 1; Calcium Pump 1; ATPase, Ca<sup>++</sup> Transporting, Cardiac Muscle, Fast Twitch 1; Endoplasmic Reticulum Class 1/2 Ca(2+) ATPase; SR Ca(2+)-ATPase 1; ATP2A; Calcium-Transporting ATPase Sarcoplasmic Reticulum Type, Fast Twitch Skeletal Muscle Isoform; EC 7.2.2.10; EC 3.6.3.8; EC 3.6.3

## Background

Gene Name: ATP2A1

NCBI Gene Entry: [487](#)

UniProt Entry: [O14983](#)

## Application Information

Molecular Weight: Predicted, 110 kDa; observed, 100 kDa

Clonality: Rabbit monoclonal antibody

Clone ID: 23GB4340

Species Reactivity: Human

Applications Tested: Western blotting (WB), immunocytochemistry (IC)

## Immunogen

A synthesized peptide derived from human ATP2A1/SERCA1

## Isotype

Rabbit IgG

## Storage Buffer

Supplied in PBS (pH 7.4) containing 50% glycerol, and 0.02% sodium azide.

## Storage

Store at -20 °C for one year.

## Recommended Dilutions

Western Blotting (WB): 1:1,000-1:5,000

Immunocytochemistry (IC): 1:100-1:1,000

---

### SUPPORT

SUPPORT@GENUINBIOTECH.COM  
TEL: +1-540-855-7041

### ORDERS

SALES@GENUINBIOTECH.COM  
FAX: +1-540-855-7041

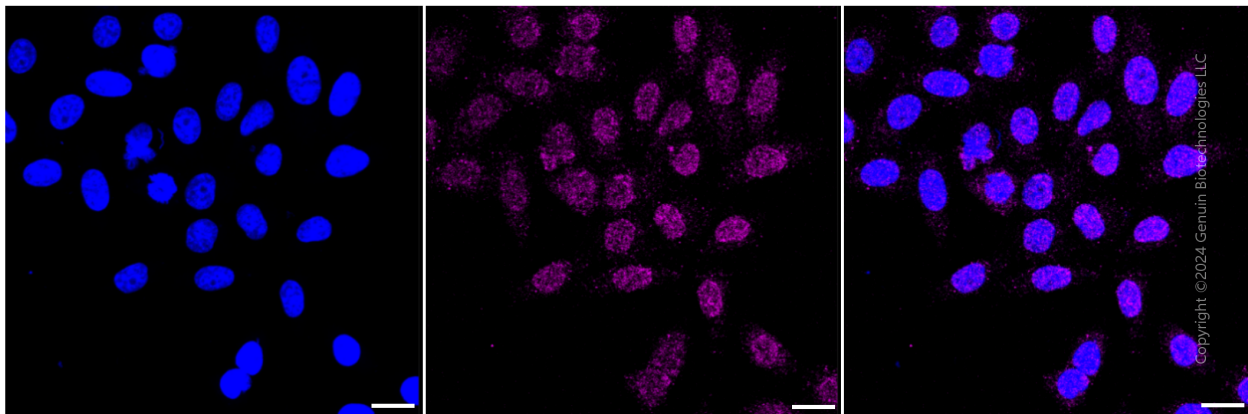
[WWW.GENUINBIOTECH.COM](http://WWW.GENUINBIOTECH.COM)

# Anti-ATP2A1 Recombinant Rabbit Monoclonal Antibody

PAGE 2

**Note:** This product is for research use only.

## Validation Data



Immunocytochemical staining of HepG2 cells with ATP2A1 antibody (Cat#1758, 1:1,000). Nuclei were stained blue with DAPI; ATP2A1 was stained magenta with Alexa Fluor® 647. Images were taken using Leica stellaris 5. Protein abundance based on laser Intensity and smart gain: Very low. Scale bar: 20  $\mu$ m.

---

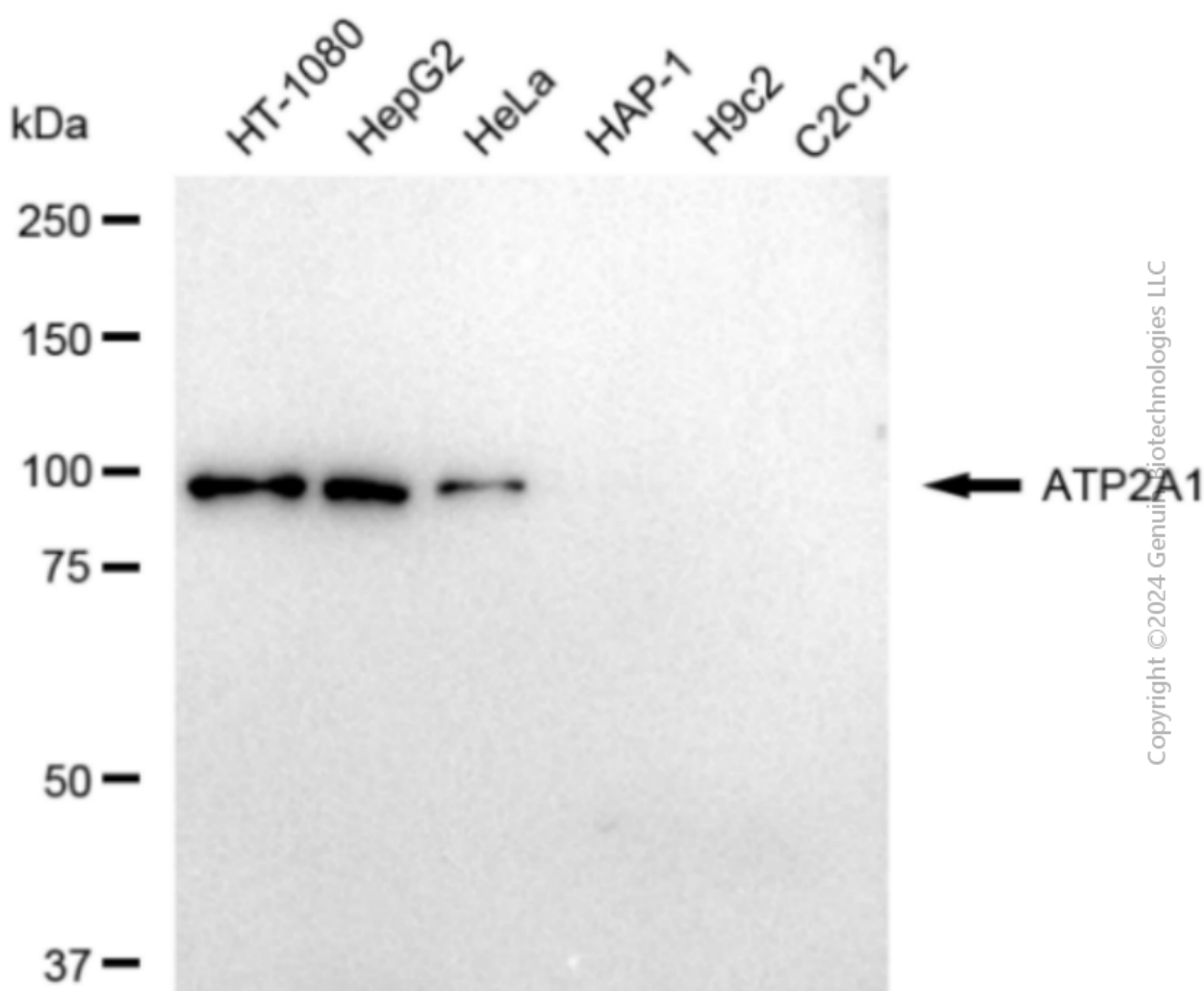
### SUPPORT

SUPPORT@GENUINBIOTECH.COM  
TEL: +1-540-855-7041

### ORDERS

SALES@GENUINBIOTECH.COM  
FAX: +1-540-855-7041

[WWW.GENUINBIOTECH.COM](http://WWW.GENUINBIOTECH.COM)



Western blotting analysis using anti-ATP2A1 antibody (Cat#1758). Total cell lysates (30 µg) from various cell lines were loaded and separated by SDS-PAGE. The blot was incubated with anti-ATP2A1 antibody (Cat#1758, 1:5,000) and HRP-conjugated goat anti-rabbit secondary antibody (Cat#201, 1:20,000) respectively. Image was developed using FeQ™ ECL Substrate Kit (Cat#226).