

Anti-BRAT1 Recombinant Rabbit Monoclonal Antibody



Catalog #: 1762

Aliases

BRAT1; BRCA1 Associated ATM Activator 1; BRCA1-Associated Protein Required For ATM Activation Protein 1; BRCA1-Associated ATM Activator 1; BAAT1; MGC22916; C7orf27; HEAT Repeat-Containing Protein C7orf27; Chromosome 7 Open Reading Frame 27; C7ORF27; NEDCAS; RMFSL

Background

Gene Name: BRAT1

NCBI Gene Entry: [221927](#)

UniProt Entry: [Q6PJG6](#)

Application Information

Molecular Weight: Predicted, 88 kDa; observed, 75 kDa

Clonality: Rabbit monoclonal antibody

Clone ID: 23GB4355

Species Reactivity: Human

Applications Tested: Western blotting (WB), flow cytometry (FCM), immunocytochemistry (IC)

Immunogen

A synthesized peptide derived from human BRAT1

Isotype

Rabbit IgG

Storage Buffer

Supplied in PBS (pH 7.4) containing 50% glycerol, and 0.02% sodium azide.

Storage

Store at -20 °C for one year.

Recommended Dilutions

Western Blotting (WB): 1:1,000-1:5,000

Flow Cytometry (FCM): 1:2,000

Immunocytochemistry (IC): 1:100-1:1,000

SUPPORT

SUPPORT@GENUINBIOTECH.COM
TEL: +1-540-855-7041

ORDERS

SALES@GENUINBIOTECH.COM
FAX: +1-540-855-7041

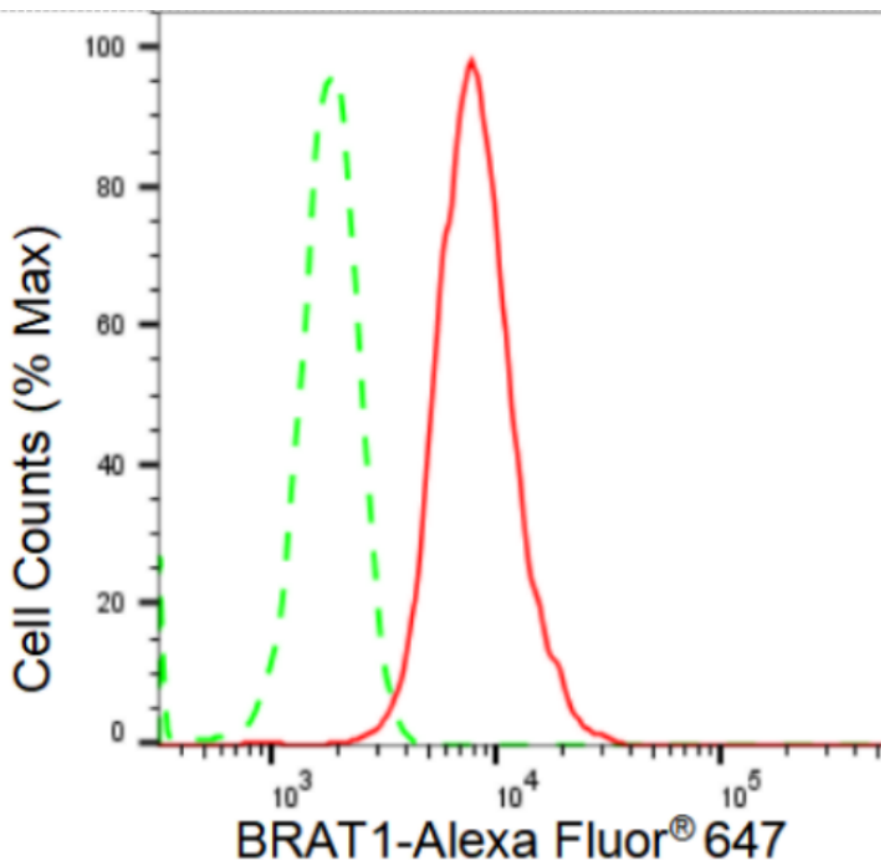
WWW.GENUINBIOTECH.COM

Anti-BRAT1 Recombinant Rabbit Monoclonal Antibody

PAGE 2

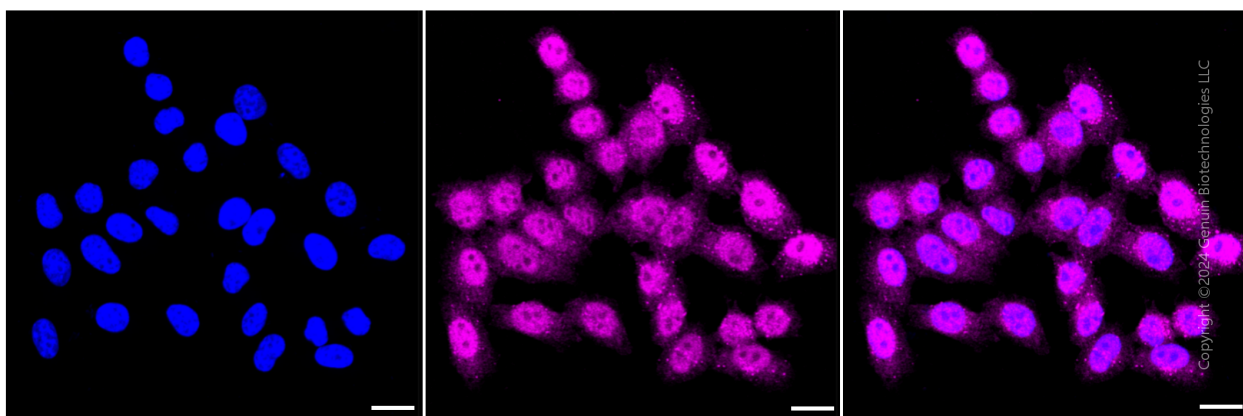
Note: This product is for research use only.

Validation Data



Copyright ©2024 Genuin Biotechnologies LLC

Flow cytometric analysis of BRAT1 expression in HepG2 cells using BRAT1 antibody (Cat#1762, 1:2,000). Green, isotype control; red, BRAT1.



Copyright ©2024 Genuin Biotechnologies LLC

Immunocytochemical staining of HepG2 cells with BRAT1 antibody (Cat#1762, 1:1,000). Nuclei were stained blue with DAPI; BRAT1 was stained magenta with Alexa Fluor® 647. Images were taken using Leica stellaris 5. Protein abundance based on laser Intensity and smart gain: Medium. Scale bar: 20 μ m.

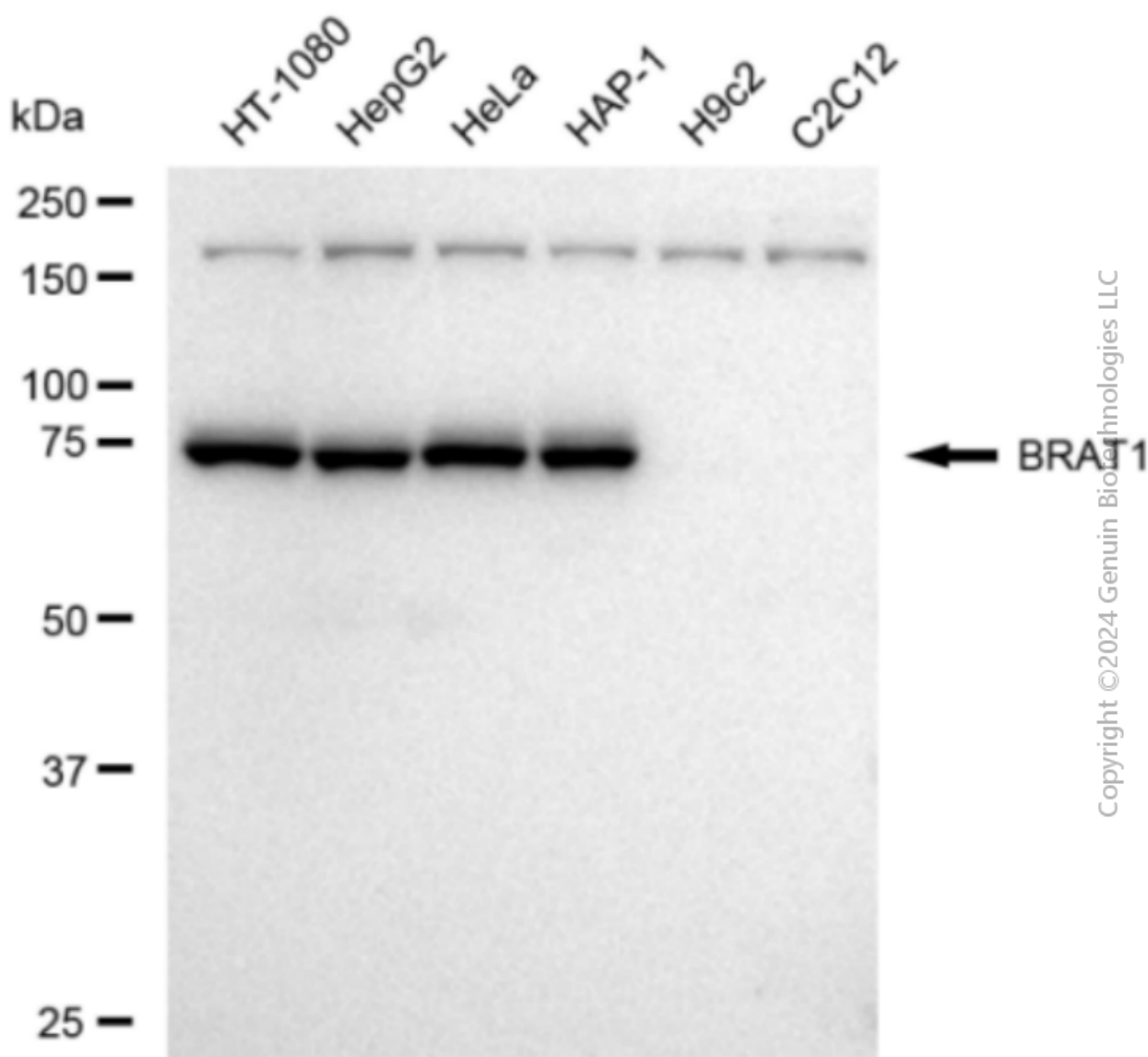
SUPPORT

SUPPORT@GENUINBIOTECH.COM
TEL: +1-540-855-7041

ORDERS

SALES@GENUINBIOTECH.COM
FAX: +1-540-855-7041

WWW.GENUINBIOTECH.COM



Copyright © 2024 Genuin Biotechnologies LLC

Western blotting analysis using anti-BRAT1 antibody (Cat#1762). Total cell lysates (30 µg) from various cell lines were loaded and separated by SDS-PAGE. The blot was incubated with anti-BRAT1 antibody (Cat#1762, 1:5,000) and HRP-conjugated goat anti-rabbit secondary antibody (Cat#201, 1:20,000) respectively. Image was developed using FeQ™ ECL Substrate Kit (Cat#226).