

Anti-BRIP1 Recombinant Rabbit Monoclonal Antibody



Catalog #: 1763

Aliases

BRIP1; BRCA1 Interacting Helicase 1; BACH1; FANCF; OF; BRCA1 Interacting Protein C-Terminal Helicase 1; BRCA1-Associated C-Terminal Helicase 1; BRCA1/BRCA2-Associated Helicase 1; ATP-Dependent RNA Helicase BRIP1; Fanconi Anemia Group J Protein; FANCF Helicase; BRCA1-Interacting Protein C-Terminal Helicase 1; BRCA1-Binding Helicase-Like Protein BACH1; BRCA1-Associated C-Terminal Helicase; BRCA1 Interacting Protein 1; BRCA1-Interacting Protein 1; Protein FANCF; EC 3.6.4.13; EC 3.6.1

Background

Gene Name: BRIP1

NCBI Gene Entry: [83990](#)

UniProt Entry: [Q9BX63](#)

Application Information

Molecular Weight: Predicted, 54 kDa; observed, 105 kDa

Clonality: Rabbit monoclonal antibody

Clone ID: 23GB4360

Species Reactivity: Human

Applications Tested: Western blotting (WB)

Immunogen

A synthesized peptide derived from human BACH1/BRIP1

Isotype

Rabbit IgG

Storage Buffer

Supplied in PBS (pH 7.4) containing 50% glycerol, and 0.02% sodium azide.

Storage

Store at -20 °C for one year.

Recommended Dilutions

Western Blotting (WB): 1:1,000-1:5,000

SUPPORT

SUPPORT@GENUINBIOTECH.COM
TEL: +1-540-855-7041

ORDERS

SALES@GENUINBIOTECH.COM
FAX: +1-540-855-7041

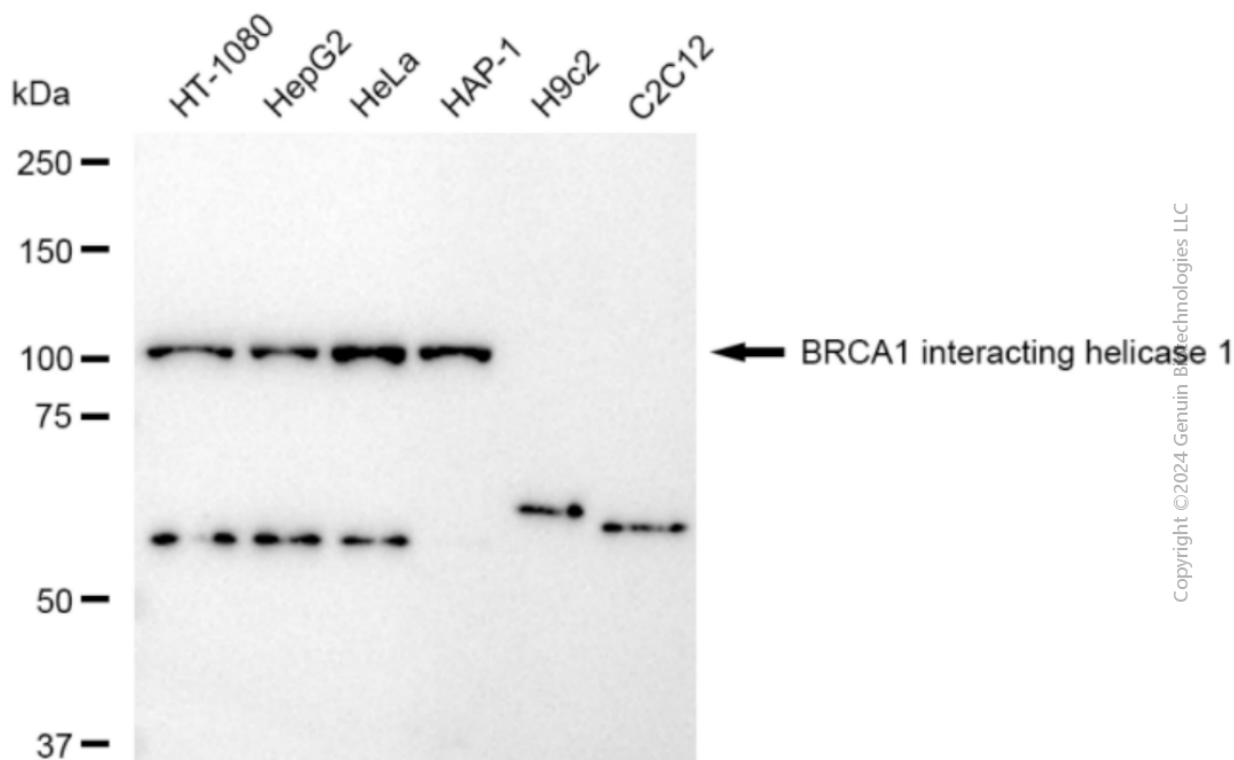
WWW.GENUINBIOTECH.COM

Anti-BRIP1 Recombinant Rabbit Monoclonal Antibody

PAGE 2

Note: This product is for research use only.

Validation Data



Western blotting analysis using anti-BRCA1 interacting helicase 1 antibody (Cat#1763). Total cell lysates (30 μ g) from various cell lines were loaded and separated by SDS-PAGE. The blot was incubated with anti-BRCA1 interacting helicase 1 antibody (Cat#1763, 1:5,000) and HRP-conjugated goat anti rabbit secondary antibody (Cat#201, 1:20,000) respectively. Image was developed using FeQ™ ECL Substrate Kit (Cat#226).

SUPPORT

SUPPORT@GENUINBIOTECH.COM
TEL: +1-540-855-7041

ORDERS

SALES@GENUINBIOTECH.COM
FAX: +1-540-855-7041

WWW.GENUINBIOTECH.COM