

Anti-Phospho-ERK1 (T202) + ERK2 (T185) Recombinant Rabbit Monoclonal Antibody



Catalog #: 1798

Aliases

MAPK3; Mitogen-Activated Protein Kinase 3; ERK1; PRKM3; Extracellular Signal-Regulated Kinase 1; Microtubule-Associated Protein 2 Kinase; Insulin-Stimulated MAP2 Kinase; EC 2.7.11.24; P44-ERK1; P44-MAPK; P44ERK1; P44MAPK; ERK-1; ERT2; Extracellular Signal-Related Kinase 1; MAP Kinase Isoform P44; MAP Kinase; EC 2.7.11; HS44KDAP; HUMKER1A; P44mapk; P44erk1; MAPK 1; MAPK 3; MAPK1; Mitogen-Activated Protein Kinase 1; ERK2; Extracellular Signal-Regulated Kinase 2; MAPK2; PRKM1; PRKM2; ERK; Mitogen-Activated Protein Kinase 2; MAP Kinase 1; MAP Kinase 2; EC 2.7.11.24; P42-MAPK; P41mapk; MAPK; ERK-2; ERT1; Protein Tyrosine Kinase; ERK2; MAP Kinase Isoform P42; EC 2.7.11; P42MAPK; P41MAPK; MAPK 1; NS13; P38; P40; P41

Background

Gene Name: MAPK3/1

NCBI Gene Entry: [5595/5594](#)

UniProt Entry: [P27361/P28482](#)

Application Information

Molecular Weight: Predicted, 41,43 kDa; observed, 42,44 kDa

Clonality: Rabbit monoclonal antibody

Clone ID: 23GB4515

Species Reactivity: Human, mouse, rat

Applications Tested: Western blotting (WB), flow cytometry (FCM), immunocytochemistry (IC)

Immunogen

A synthesized peptide derived from human Phospho-ERK1 (T202) + ERK2 (T185)

Isotype

Rabbit IgG

Storage Buffer

Supplied in PBS (pH 7.4) containing 50% glycerol, and 0.02% sodium azide.

Storage

Store at -20 °C for one year.

Recommended Dilutions

SUPPORT

SUPPORT@GENUINBIOTECH.COM
TEL: +1-540-855-7041

ORDERS

SALES@GENUINBIOTECH.COM
FAX: +1-540-855-7041

WWW.GENUINBIOTECH.COM

Anti-Phospho-ERK1 (T202) + ERK2 (T185) Recombinant Rabbit Monoclonal Antibody

PAGE 2

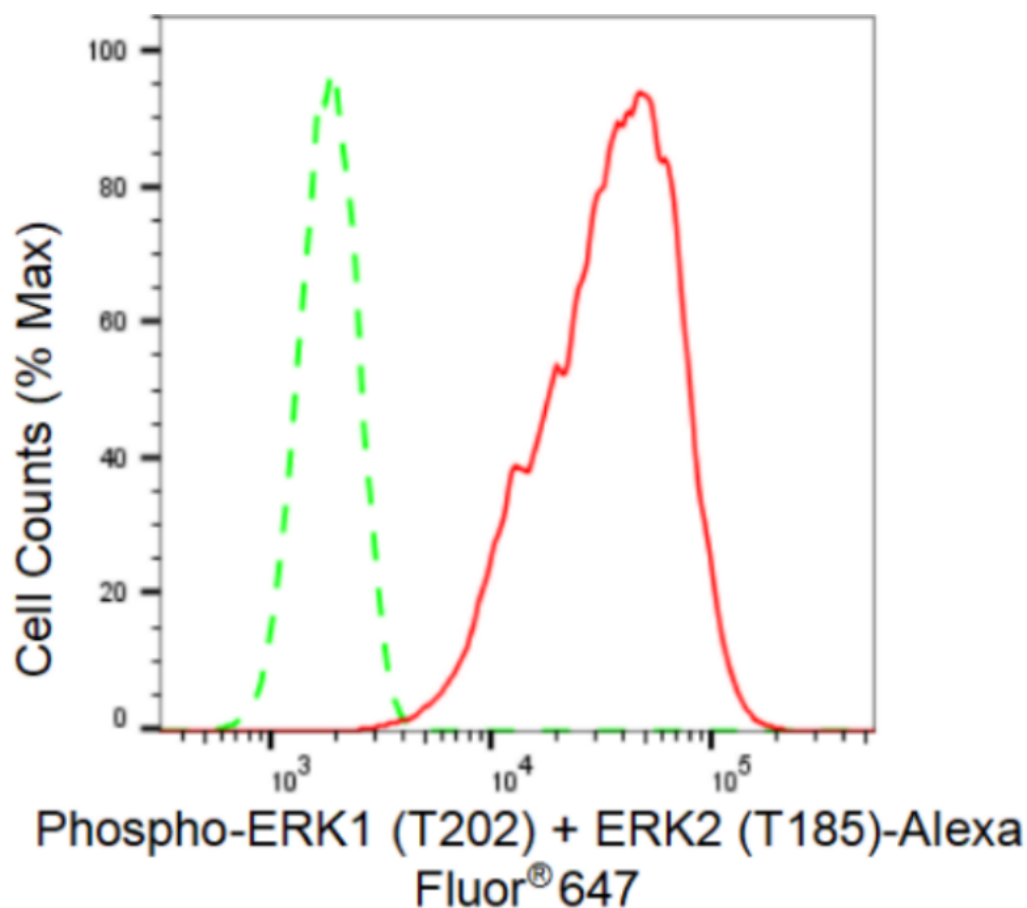
Western Blotting (WB): 1:1,000-1:5,000

Flow Cytometry (FCM): 1:2,000

Immunocytochemistry (IC): 1:100-1:1,000

Note: This product is for research use only.

Validation Data



Copyright ©2024 Genuin Biotechnologies LLC

Flow cytometric analysis of Phospho-ERK1 (T202) + ERK2 (T185) expression in C2C12 cells using Phospho-ERK1 (T202) + ERK2 (T185) antibody (Cat#1798, 1:2000). Green, isotype control; red, Phospho-ERK1 (T202) + ERK2 (T185).

SUPPORT

SUPPORT@GENUINBIOTECH.COM
TEL: +1-540-855-7041

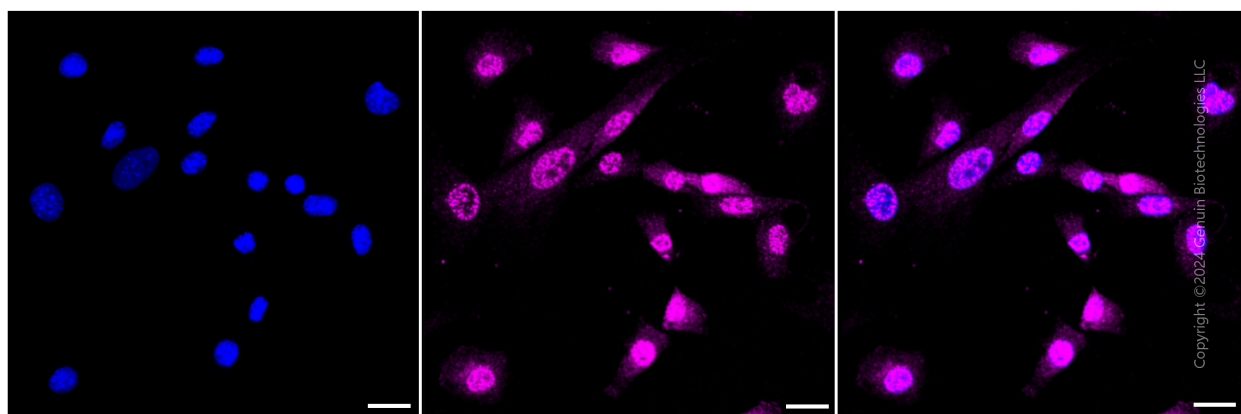
ORDERS

SALES@GENUINBIOTECH.COM
FAX: +1-540-855-7041

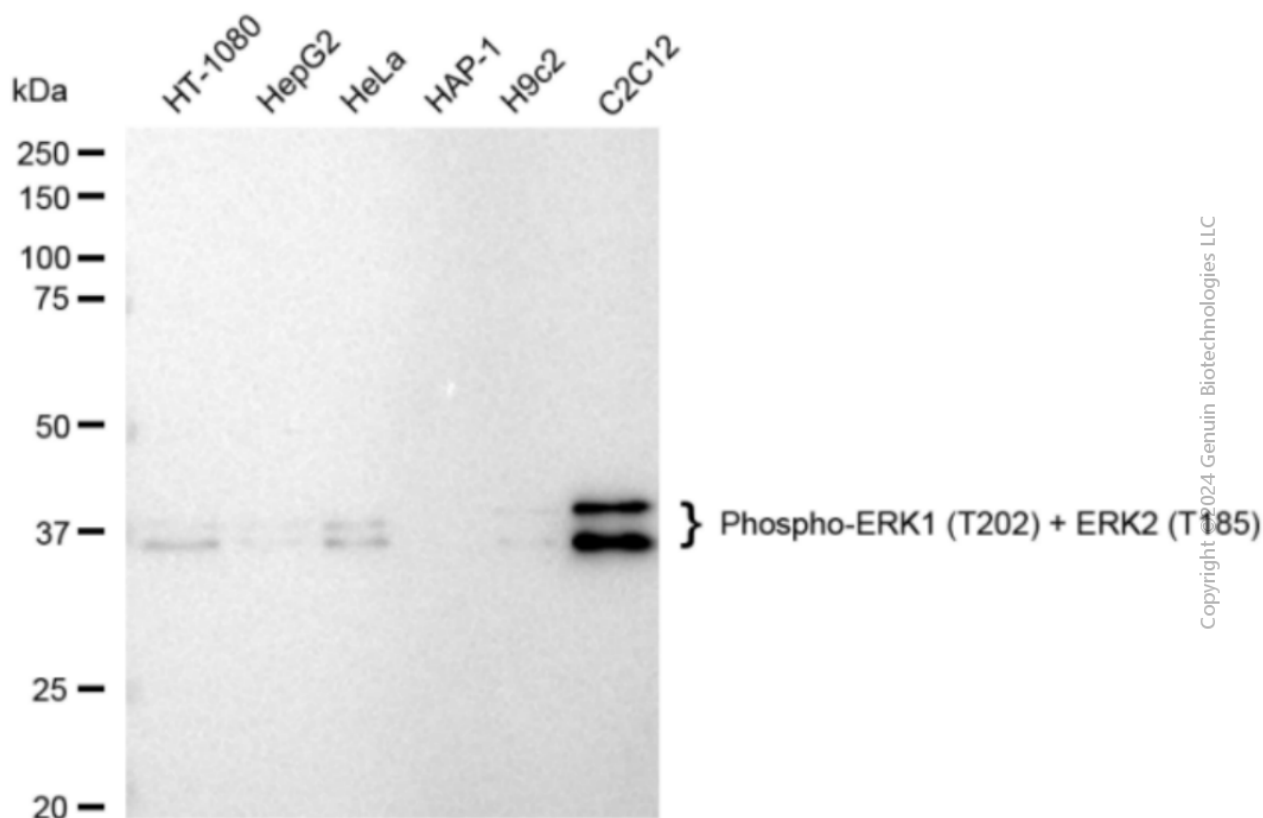
WWW.GENUINBIOTECH.COM

Anti-Phospho-ERK1 (T202) + ERK2 (T185) Recombinant Rabbit Monoclonal Antibody

PAGE 3



Immunocytochemical staining of C2C12 cells with Phospho-ERK1 (T202) + ERK2 (T185) antibody (Cat#1798, 1:1,000). Nuclei were stained blue with DAPI; Phospho-ERK1 (T202) + ERK2 (T185) was stained magenta with Alexa Fluor® 647. Images were taken using Leica stellaris 5. Protein abundance based on laser Intensity and smart gain: Medium. Scale bar: 20 µm.



Western blotting analysis using anti-Phospho-ERK1 (T202) + ERK2 (T185) antibody (Cat#1798). Total cell lysates (30 µg) from various cell lines were loaded and separated by SDS-PAGE. The blot was incubated with anti-Phospho-ERK1 (T202) + ERK2 (T185) antibody (Cat#1798, 1:5,000) and HRP-conjugated goat anti-rabbit secondary antibody (Cat#201, 1:20,000) respectively. Image was developed using FeQ™ ECL Substrate Kit (Cat#226).

SUPPORT

SUPPORT@GENUINBIOTECH.COM
TEL: +1-540-855-7041

ORDERS

SALES@GENUINBIOTECH.COM
FAX: +1-540-855-7041

WWW.GENUINBIOTECH.COM