

# Anti-Phospho-PP2A alpha (Y307) Recombinant Rabbit Monoclonal Antibody



**Catalog #: 1811**

## Aliases

PPP2CA; Protein Phosphatase 2 Catalytic Subunit Alpha; Serine/Threonine-Protein Phosphatase 2A Catalytic Subunit Alpha Isoform; Protein Phosphatase 2, Catalytic Subunit, Alpha Isozyme; Replication Protein C; EC 3.1.3.16; PP2A-Alpha; PP2Calpha; PP2AC; RP-C; Protein Phosphatase 2 (Formerly 2A), Catalytic Subunit, Alpha Isoform; Protein Phosphatase 2A Catalytic Subunit, Alpha Isoform; PP2CALPHA; NEDLBA; PP2Ac; PP2CA; HJS3

## Background

Gene Name: PPP2CA

NCBI Gene Entry: [5515](#)

UniProt Entry: [P67775](#)

## Application Information

Molecular Weight: Predicted, 36 kDa; observed, 35 kDa

Clonality: Rabbit monoclonal antibody

Clone ID: 23GB4580

Species Reactivity: Human, mouse, rat

Applications Tested: Western blotting (WB), flow cytometry (FCM), immunocytochemistry (IC)

## Immunogen

A synthesized peptide derived from human Phospho-PP2A alpha (Y307)

## Isotype

Rabbit IgG

## Storage Buffer

Supplied in PBS (pH 7.4) containing 50% glycerol, and 0.02% sodium azide.

## Storage

Store at -20 °C for one year.

## Recommended Dilutions

Western Blotting (WB): 1:1,000-1:5,000

Flow Cytometry (FCM): 1:2,000

Immunocytochemistry (IC): 1:100-1:1,000

---

### SUPPORT

SUPPORT@GENUINBIOTECH.COM  
TEL: +1-540-855-7041

### ORDERS

SALES@GENUINBIOTECH.COM  
FAX: +1-540-855-7041

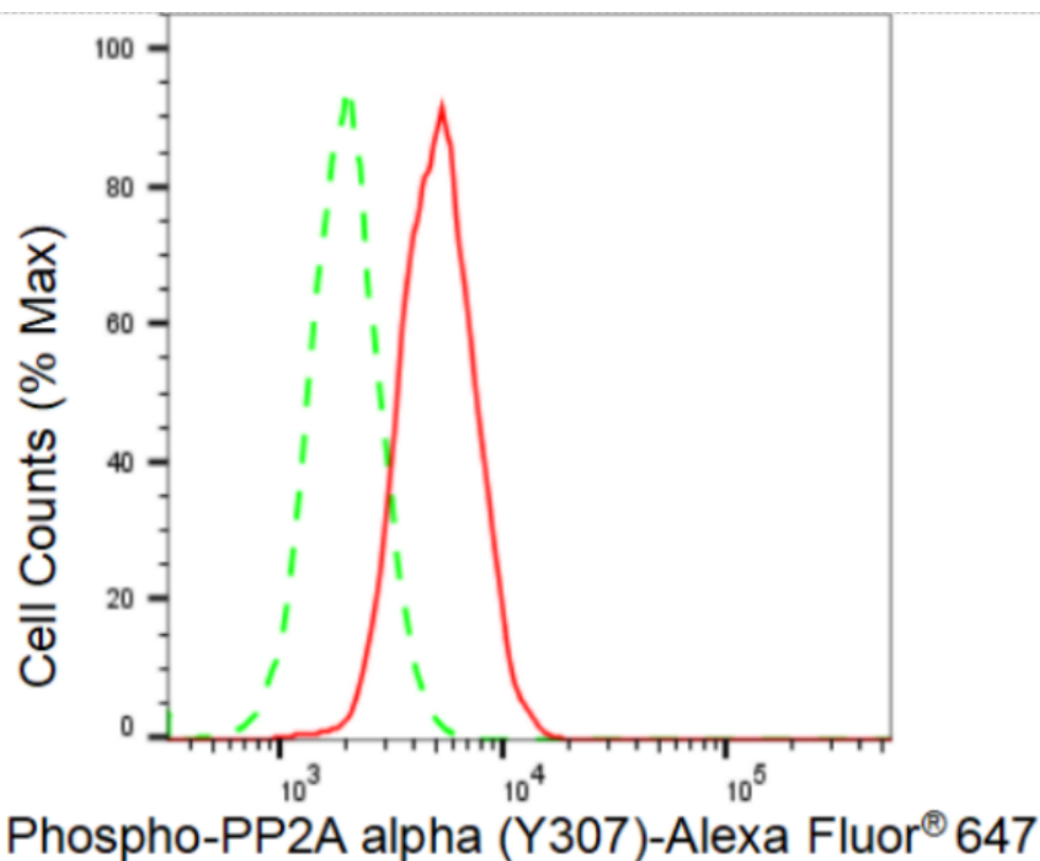
[WWW.GENUINBIOTECH.COM](http://WWW.GENUINBIOTECH.COM)

# Anti-Phospho-PP2A alpha (Y307) Recombinant Rabbit Monoclonal Antibody

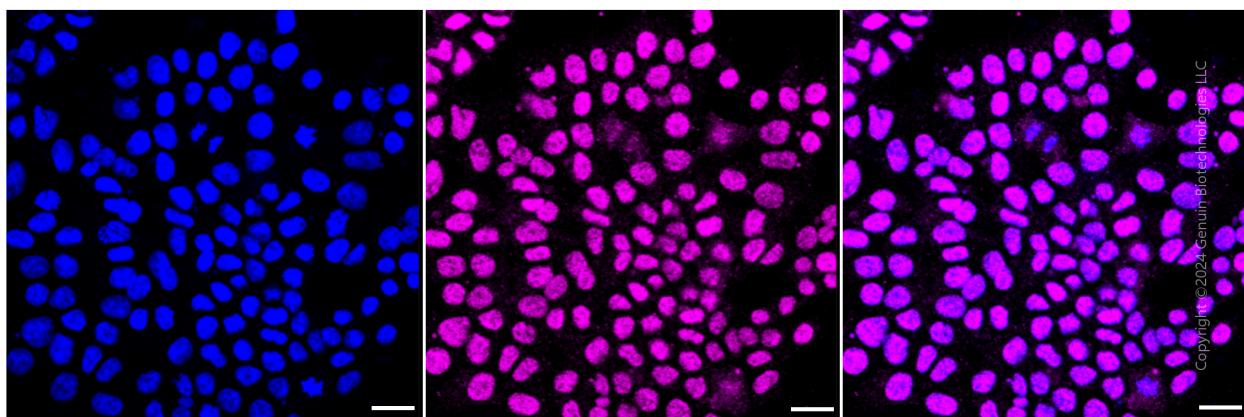
PAGE 2

**Note:** This product is for research use only.

## Validation Data



Flow cytometric analysis of Phospho-PP2A alpha (Y307) expression in HAP-1 cells using Phospho-PP2A alpha (Y307) antibody (Cat#1811, 1:2,000). Green, isotype control; red, Phospho-PP2A alpha (Y307).



Immunocytochemical staining of HAP-1 cells with Phospho-PP2A alpha (Y307) antibody (Cat#1811, 1:1,000). Nuclei were stained blue with DAPI; Phospho-PP2A alpha (Y307) was stained magenta with Alexa Fluor® 647. Images were taken using Leica stellaris 5. Protein

### SUPPORT

SUPPORT@GENUINBIOTECH.COM  
TEL: +1-540-855-7041

### ORDERS

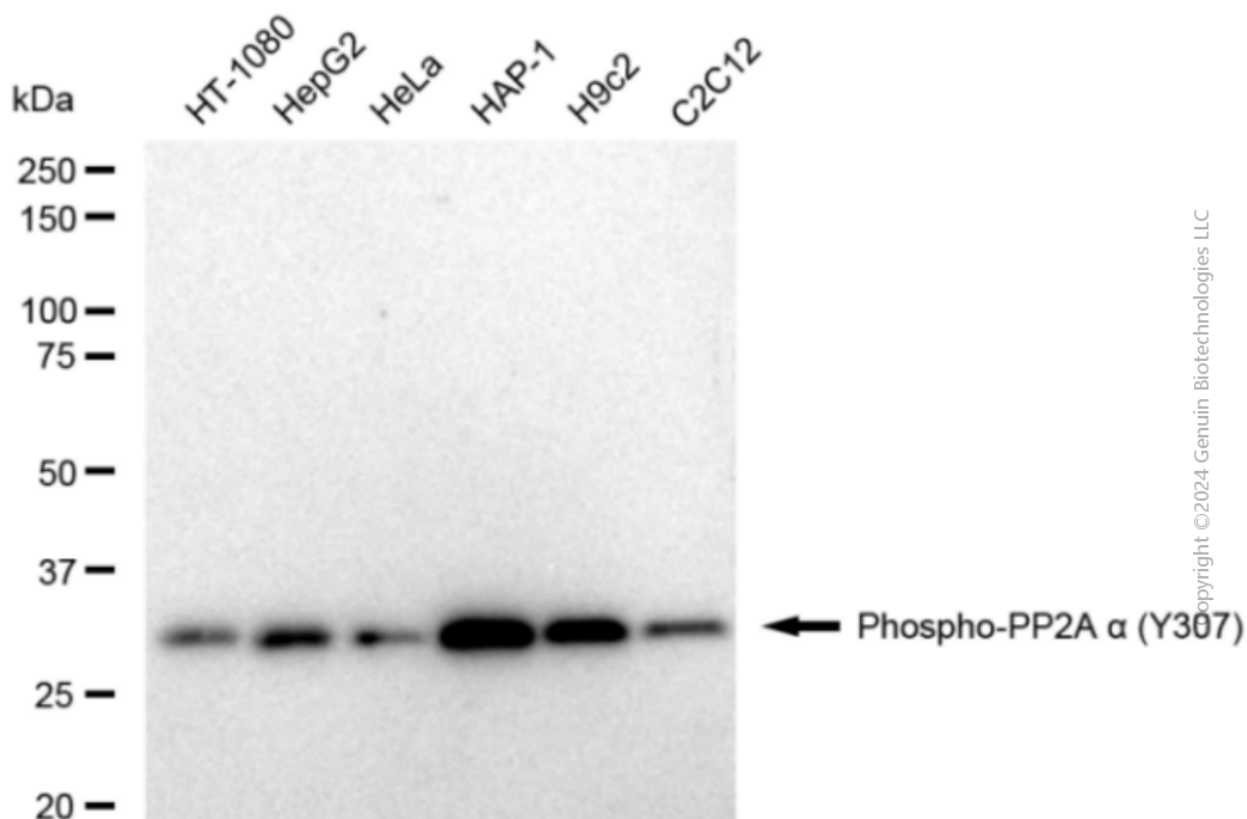
SALES@GENUINBIOTECH.COM  
FAX: +1-540-855-7041

[WWW.GENUINBIOTECH.COM](http://WWW.GENUINBIOTECH.COM)

## Anti-Phospho-PP2A alpha (Y307) Recombinant Rabbit Monoclonal Antibody

PAGE 3

abundance based on laser Intensity and smart gain: Low. Scale bar: 20  $\mu$ m.



Western blotting analysis using anti-Phospho-PP2A alpha (Y307) antibody (Cat#1811). Total cell lysates (30  $\mu$ g) from various cell lines were loaded and separated by SDS-PAGE. The blot was incubated with anti-Phospho-PP2A alpha (Y307) antibody (Cat#1811, 1:5,000) and HRP-conjugated goat anti-rabbit secondary antibody (Cat#201, 1:20,000) respectively. Image was developed using FeQ™ ECL Substrate Kit (Cat#226).

### SUPPORT

SUPPORT@GENUINBIOTECH.COM  
TEL: +1-540-855-7041

### ORDERS

SALES@GENUINBIOTECH.COM  
FAX: +1-540-855-7041

WWW.GENUINBIOTECH.COM